

743 BISCAYNE DRIVE  
WEST PALM BEACH, FLORIDA 33401  
561.659.5683

STEPHEN MICHAEL ROY AIA, NCARB  
FLORIDA REGISTERED ARCHITECT  
AR91404

PROJECT:

TENANT IMPROVEMENT  
MODIFICATIONS  
TO

150 WORTH AVENUE UNIT 235  
PALM BEACH  
FLORIDA 33480

TITLE  
SITE PLAN

DRAWING INFO

DATE 9-9-11

SCALE VARIES

DESIGNED BY MESA

DRAWN BY MESA

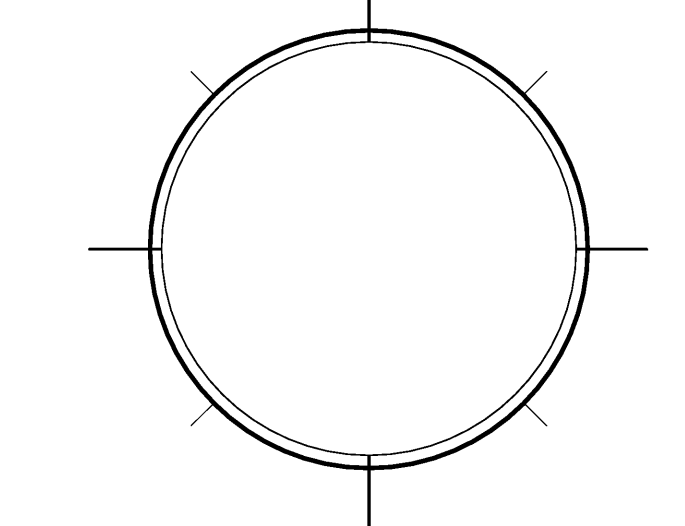
PROJECT # 111608

REVISIONS AND ISSUE

NO.	DATE	ISSUE NOTE
NO.	DATE	REVISION NOTE

OWNERSHIP AND USE OF THESE DOCUMENTS & SPECIFICATIONS AS INSTRUMENTS OF SERVICE ARE AND SHALL REMAIN THE PROPERTY OF THE ARCHITECT WHETHER THE PROJECT THEY ARE MADE FOR IS EXECUTED OR NOT. THEY SHALL NOT BE USED BY THE OWNER OR OTHERS ON OTHER PROJECTS OR FOR ADDITIONS ON OTHER PROJECTS BY OTHERS, EXCEPT BY AGREEMENT IN WRITING WITH ARCHITECT

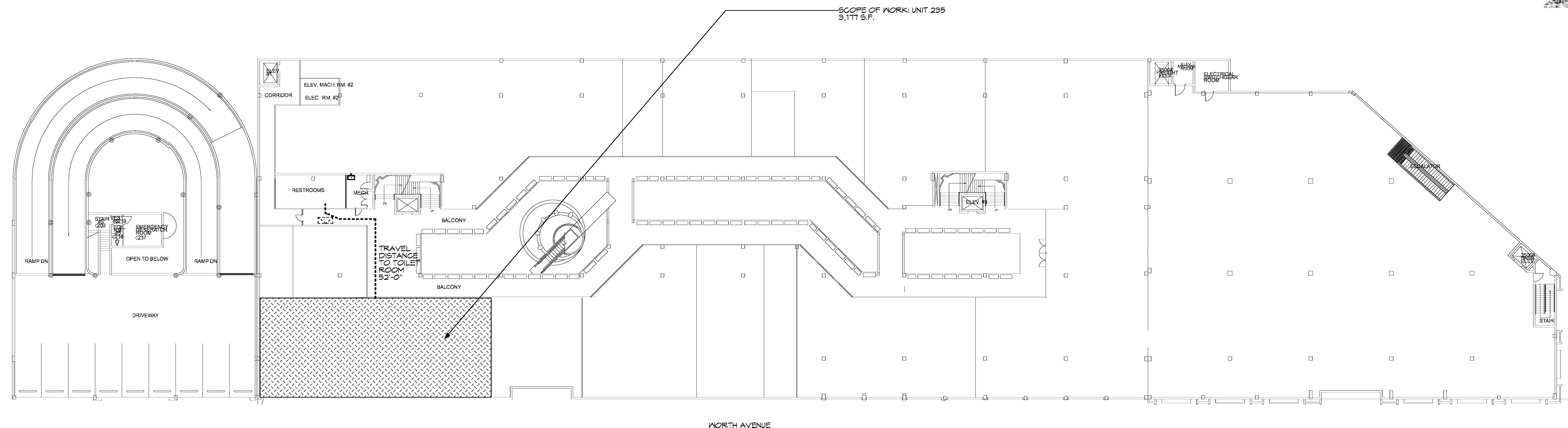
SEAL:



SHEET

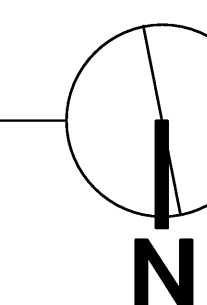
**A0**

OF:



NORTH AVENUE

1 SITE PLAN  
Scale: 1" = 20' ft

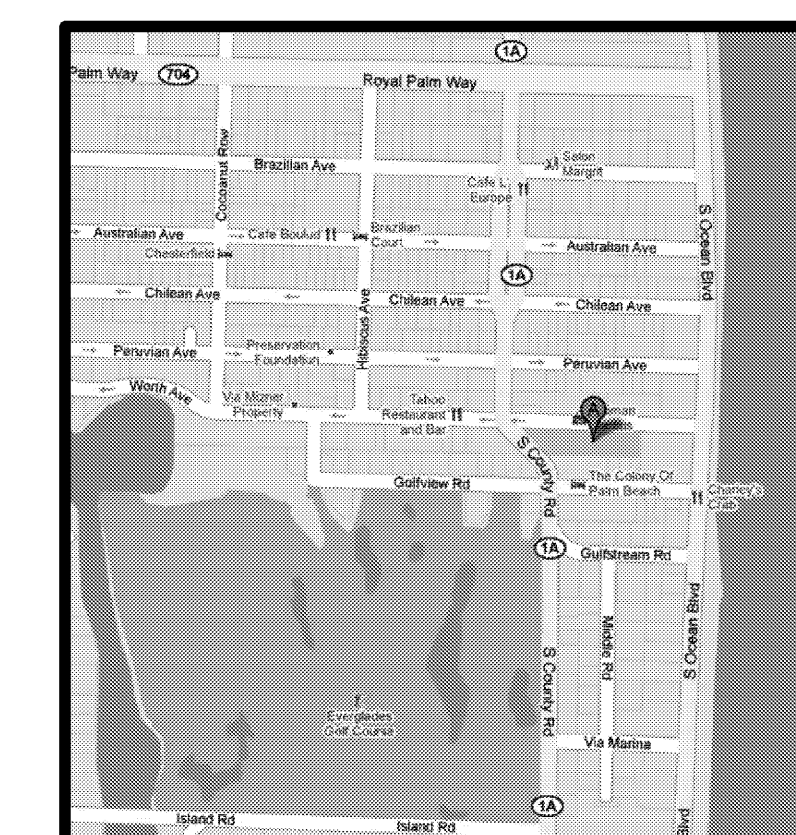


SCOPE OF WORK:  
1. TENANT IMPROVEMENT

NOTE TO CONTRACTOR:  
THESE DOCUMENTS ARE DEVELOPED AND DELIVERED AS A INSTRUMENT TO CONSTRUCT AS A "WHOLE". WHEN A PERMIT IS ISSUED, IT IS THE RESPONSIBILITY OF THE CONTRACTOR TO THOROUGHLY REVIEW AND CROSS REFERENCE DOCUMENT INFORMATION BETWEEN ALL SHEETS AND ALL PERMITS. FAILURE TO PROVIDE SUBCONTRACTORS WITH ALL INFORMATION, DURING BIDDING AND CONSTRUCTION AS A "WHOLE" SHALL NOT CONSTITUTE ADDITIONAL FEES IN THE FORM OF CHANGE ORDERS.

PROJECT INFORMATION	
JURISDICTION	PALM BEACH
ZONING	RETAIL
CONSTRUCTION TYPE	VB
USE GROUP	MERCANTILE
APPLICABLE CODES	2007 FBC WITH 2009 REVISIONS
LEVEL OF ALTERATION	LEVEL TWO

SHEET	DRAWING TITLE
A0	SITE PLAN
A1	FLOOR PLAN
A2	FLOOR PLAN
A3	EXTERIOR ELEVATION



743 BISCAYNE DRIVE  
WEST PALM BEACH, FLORIDA 33401  
561.659.5683

STEPHEN MICHAEL ROY AIA, NCARB  
FLORIDA REGISTERED ARCHITECT  
AR91404

PROJECT:  
**TENANT IMPROVEMENT  
MODIFICATIONS  
TO**

150 WORTH AVENUE UNIT 235  
PALM BEACH  
FLORIDA 33480

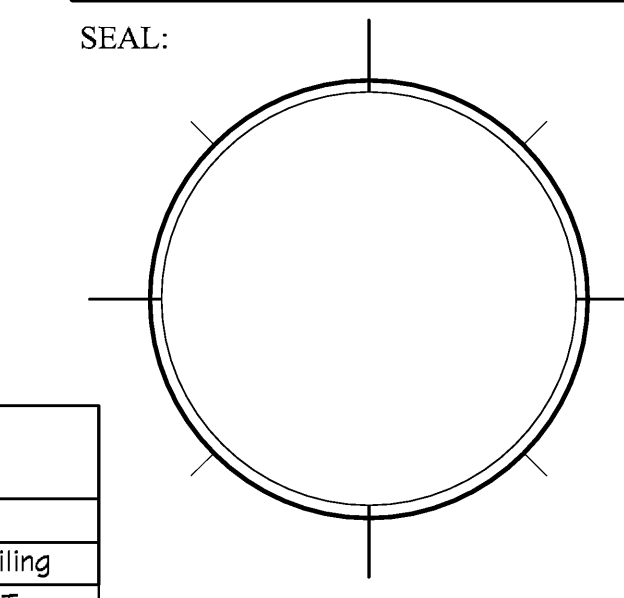
TITLE  
**FLOOR PLAN**

DRAWING INFO	
DATE	9-9-11
SCALE	VARIES
DESIGNED BY	MESA
DRAWN BY	MESA
PROJECT #	111608

REVISIONS AND ISSUE

NO.	DATE	ISSUE NOTE
1	6/2/11	INTERIOR WALL
NO.	DATE	REVISION NOTE

OWNERSHIP AND USE OF THESE DOCUMENTS & SPECIFICATIONS AS INSTRUMENTS OF SERVICE ARE AND SHALL REMAIN THE PROPERTY OF THE ARCHITECT WHETHER THE PROJECT THEY ARE MADE FOR IS EXECUTED OR NOT. THEY SHALL NOT BE USED BY THE OWNER OR OTHERS ON OTHER PROJECTS OR FOR ADDITIONS ON OTHER PROJECTS BY OTHERS, EXCEPT BY AGREEMENT IN WRITING WITH ARCHITECT



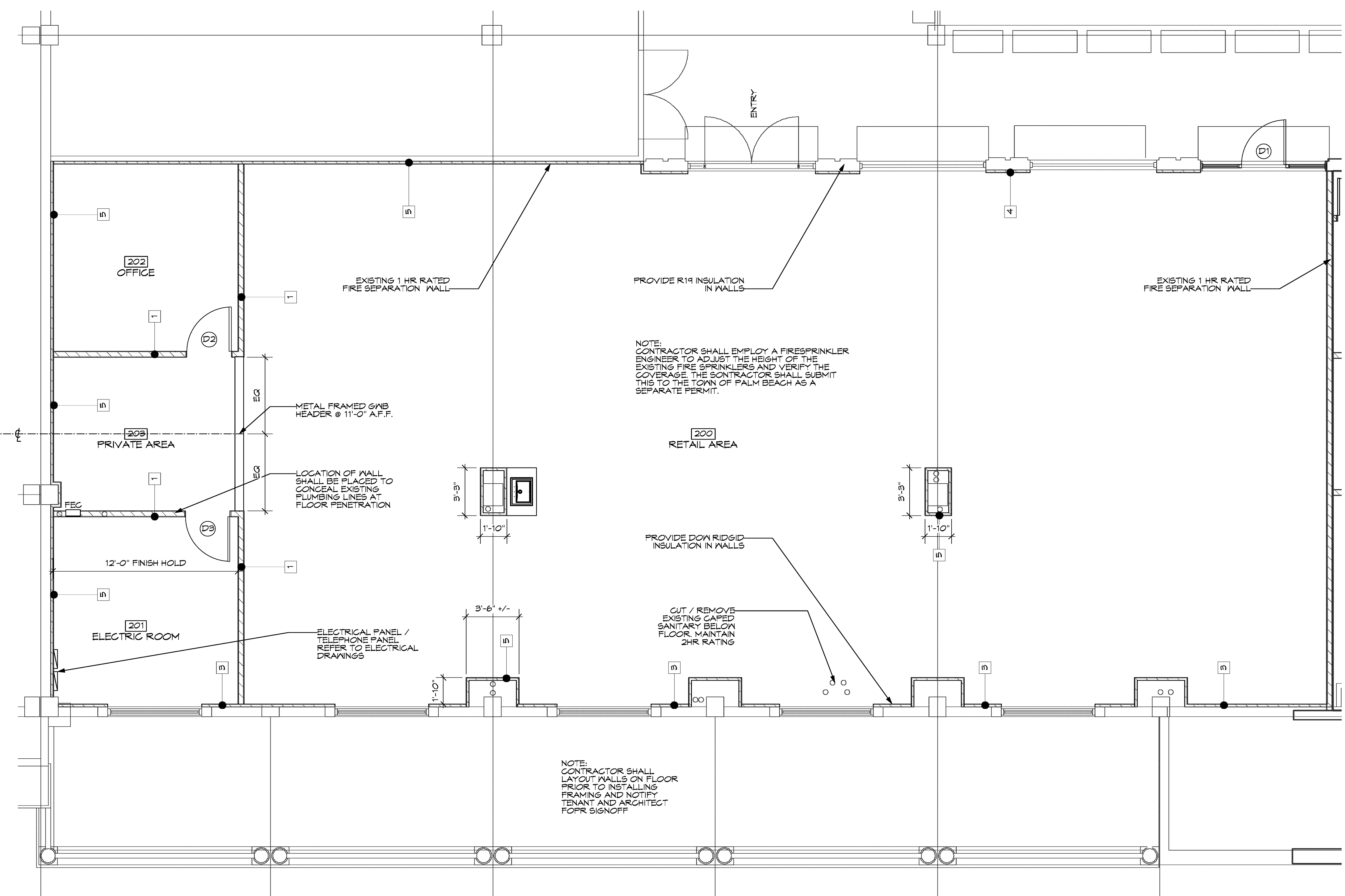
**A1**

OF:

ARCHITECTURAL GENERAL NOTES:

- THE INTENT OF THE DRAWINGS IS TO INCLUDE ALL ITEMS FOR THE PROPER EXECUTION AND COMPLETION OF THE WORK AND OMISSIONS IN THE DESCRIPTION DOES NOT RELIEVE THE G.C. OF DELIVERING A COMPLETED PROJECT IN ACCORDANCE WITH GENERALLY ACCEPTED PRACTICE.
- THE G.C. SHALL CAREFULLY STUDY AND COMPARE THE CONTRACT DOCUMENTS AND SHALL REPORT TO THE DESIGNER ANY ERROR, INCONSISTENCY OR OMISSION HE MAY DISCOVER. THE G.C. SHALL DO NO WORK WITHOUT DRAWINGS, SPECIFICATIONS OR MODIFICATIONS.
- ANY ITEM NECESSARY FOR THE PROPER COMPLETION OF THE WORK UNDER THIS CONTRACT WHICH IS NOT SPECIFICALLY COVERED IN THE DRAWINGS AND SPECIFICATIONS, SHALL BE PERFORMED IN A MANNER DEEMED GOOD PRACTICE TO THE TRADE.
- THE G.C. SHALL MAINTAIN A COMPLETE SET OF UP-TO-DATE DRAWINGS, INCLUDING SHOP DRAWINGS, ON THE JOB SITE AT ALL TIMES.
- WRITTEN DIMENSIONS ON THESE DRAWINGS SHALL HAVE PRECEDENCE OVER SCALED DIMENSIONS.
- WHERE TWO METALS ADJOIN OR ARE AFFIXED TO EACH OTHER, THE G.C. SHALL PROVIDE THE NECESSARY INSULATING MATERIAL SO THAT NO VIBRATION OR NOISE IS TRANSMITTED BETWEEN THEM.
- THE SPACE AROUND PIPES, DUCTS, ETC. AND PENETRATING RATED WALLS SHALL NOT EXCEED 1" AND SHALL BE PACKED SOLID WITH MINERAL WOOL, OR EQUAL, AND TO BE CLOSED OFF BY CLOSE FITTING METAL ESCUTCHEONS ON BOTH SIDES AS REQUIRED BY LOCAL CODE.
- ALL MATERIALS AND METHODS OF CONSTRUCTION SHALL COMPLY WITH LOCAL CODES AND REQUIREMENTS OF ANY AGENCIES HAVING JURISDICTION.
- THE G.C. SHALL BE RESPONSIBLE FOR PATCHING, REFINISHING, OR OTHER REPAIR WORK WHICH HAS BEEN DAMAGED DURING CONSTRUCTION.
- THE G.C. SHALL REVIEW ALL SPECIFIED PRODUCTS AND BE RESPONSIBLE FOR DETERMINING AVAILABILITY. NO SUBSTITUTIONS OR ALLOWANCES WILL BE MADE FOR FAILURE TO ORDER ITEMS TO COORDINATE WITH THE PROJECT SCHEDULE. ITEMS WHICH REQUIRE A LEAD TIME INCOMPATIBLE WITH THE PROJECT SCHEDULE SHALL BE BROUGHT TO THE ATTENTION OF THE OWNER IN ORDER THAT PROPER ADJUSTMENTS CAN BE MADE.
- THE G.C. IS TO PROVIDE EVERYTHING NECESSARY FOR THE COMPLETION OF THE WORK AS SHOWN IN ALL DRAWINGS WITH THE EXCEPTION OF THOSE ITEMS "BY OTHERS" OR "N.I.C.". THE G.C. SHALL COORDINATE HIS WORK WITH THE VARIOUS "BY OTHERS" OR "N.I.C." CONTRACTORS.
- THE G.C. SHALL BE RESPONSIBLE FOR CONSTRUCTION MEANS, METHODS, TECHNIQUES, SEQUENCES AND PROCEDURES AND FOR COORDINATING ALL PORTIONS OF THE WORK UNDER THE CONTRACT.
- THE G.C. SHALL BE RESPONSIBLE AND PAY FOR CONTROLLED INSPECTION OF MATERIALS AND CONSTRUCTION METHODS IN ACCORDANCE WITH ALL LAWS, ORDINANCES, RULES AND REGULATIONS OF THE BUILDING DEPARTMENT AND OTHERS AUTHORITIES HAVING JURISDICTION.
- THE JOB SITE SHALL BE MAINTAINED IN A REASONABLY NEAT AND ORDERLY CONDITION AND KEPT FREE FROM ACCUMULATION OF WASTE MATERIALS DURING THE ENTIRE CONSTRUCTION PERIOD.

LIFE SAFETY TABULATIONS:	
CONSTRUCTION TYPE: VB - SPRINKLERED	
1. OCCUPANCY CLASSIFICATION	
GROUP M - MERCANTILE	
• GROUND FLOOR	
MERCANTILE	= 3177 S.F.
TOTAL	= OCCUPANT LOAD = 53 PERSONS
TABLE 1004 MAX. TRAVEL DISTANCE TO EXIT: 300 FT SPRINKLERED.	
EGRESS WIDTH PER PERSON 0.2' ; THEREFORE:	
53 PERSONS X 0.2' = 10.6' TOTAL EXIT WIDTH REQ.	
EXIT WIDTH PROVIDED:	
1 DOUBLE 36" DOOR	= 72"
1 SINGLE 36" DOOR	= 36"
TOTAL:	= 108"
MINIMUM CORRIDOR WIDTH REQD. 44"	
MINIMUM CORRIDOR WIDTH PROVIDED 44"	
MAXIMUM DEAD END CORRIDOR LENGTH 20'-0"	



1 FLOOR PLAN  
A1 Scale: 1/4" = 1'-0"

DOOR SCHEDULE

Mark	Nominal Size			Door Style		Door Frame		Fire Rating	Openings		Door Data		Accessories	Comments	
	Width	Height	Thickness	Top Shape	Slab Style	Lamb Depth	Head Detail		Lamb Detail	Sill Detail	Door Slab	RO Width			RO Height
D 1	3'0"	7'0"	1 3/4"	Swing Simple	Square	Glass	8"				8'6"	7'1"		STOREFRONT	MATCH EXISTING
D 2	3'0"	7'0"	1 3/4"	Swing Simple	Square	Panel	4 3/4"				3'2"	7'1"			
D 3	3'0"	7'0"	1 3/4"	Swing Simple	Square	Panel	4 3/4"				3'2"	7'1"			

NOTE:  
ALL HARDWARE SHALL BE LEVER TYPE "ADA" ACCEPTABLE ALL LOCKS SHALL COMPLY W/ NFPA 5-2.1.5.1 AND SHALL BE READILY OPENED FROM THE EGRESS SIDE WITHOUT THE USE OF A KEY, TOOL, SPECIAL KNOWLEDGE OR EFFORT FOR OPERATION

ENTRY DOOR SHALL REMAIN UNDESTRUCTED AND SHALL BE PROTECTED BY CONTRACTOR DURING CONSTRUCTION

NOTE: TENANT SHALL SUBMIT SIGNAGE SEPARATELY FOR LANDLORD TO REVIEW FOR APPROVAL

TOILET ROOM REQUIREMENTS:  
403.4.1 LOCATION OF TOILET FACILITIES IN OCCUPANCIES OTHER THAN COVERED MALLS. IN OCCUPANCIES OTHER THAN COVERED MALLS, THE REQUIRED PUBLIC AND EMPLOYEE TOILET FACILITIES SHALL BE LOCATED NOT MORE THAN ONE STORY ABOVE OR BELOW THE SPACE REQUIRED TO BE PROVIDED WITH TOILET FACILITIES, AND THE PATH OF TRAVEL TO SUCH FACILITIES SHALL NOT EXCEED A DISTANCE OF 500 FEET.

INTERIOR FINISH CLASSIFICATION:  
EXIT: CLASS 'C'  
EXIT ACCESS: CLASS 'C'  
OTHER SPACES: CLASS 'C'  
  
CLASS 'C' INTERIOR FINISH, FLAMESPREAD T6-200, SMOKE DEVELOPED 0-450

ROOM FINISH SCHEDULE

Number	Room Name	Floor		Wall				Ceiling
		Matl	Base	North	East	South	West	
200	RETAIL AREA	BY OTHERS	BY OTHERS	GWB	GWB	GWB	GWB	ACT
201	ELECTRIC ROOM	BY OTHERS	BY OTHERS	GWB	GWB	GWB	GWB	ACT
202	OFFICE	BY OTHERS	BY OTHERS	GWB	GWB	GWB	GWB	ACT
203	PRIVATE AREA	BY OTHERS	BY OTHERS	GWB	GWB	GWB	GWB	ACT

TENANT SHALL SELECT CARPET FLOORING

743 BISCAYNE DRIVE  
WEST PALM BEACH, FLORIDA 33401  
561.659.5683

STEPHEN MICHAEL ROY AIA, NCARB  
FLORIDA REGISTERED ARCHITECT  
AR91404

PROJECT:

**TENANT IMPROVEMENT  
MODIFICATIONS  
TO**

150 WORTH AVENUE UNIT 235  
PALM BEACH  
FLORIDA 33480

TITLE  
**FLOOR PLAN**

DRAWING INFO

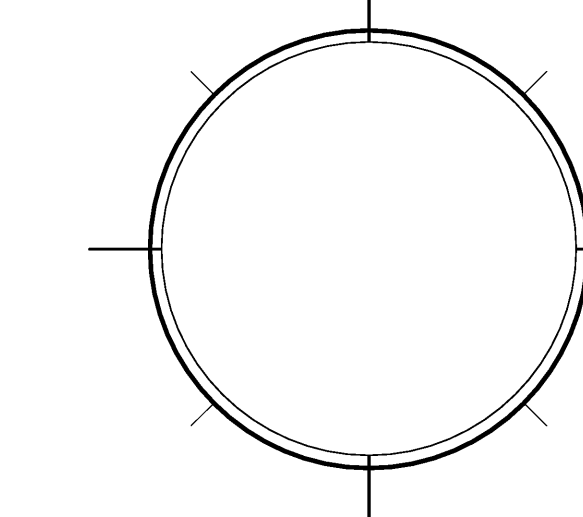
DATE	9-9-11
SCALE	VARIABLES
DESIGNED BY	MESA
DRAWN BY	MESA
PROJECT #	111608

REVISIONS AND ISSUE

NO.	DATE	ISSUE NOTE
1	6/2/11	INTERIOR WALL
NO.	DATE	REVISION NOTE

OWNERSHIP AND USE OF THESE DOCUMENTS & SPECIFICATIONS AS INSTRUMENTS OF SERVICE ARE AND SHALL REMAIN THE PROPERTY OF THE ARCHITECT WHETHER THE PROJECT THEY ARE MADE FOR IS EXECUTED OR NOT. THEY SHALL NOT BE USED BY THE OWNER OR OTHERS ON OTHER PROJECTS OR FOR ADDITIONS ON OTHER PROJECTS BY OTHERS, EXCEPT BY AGREEMENT IN WRITING WITH ARCHITECT

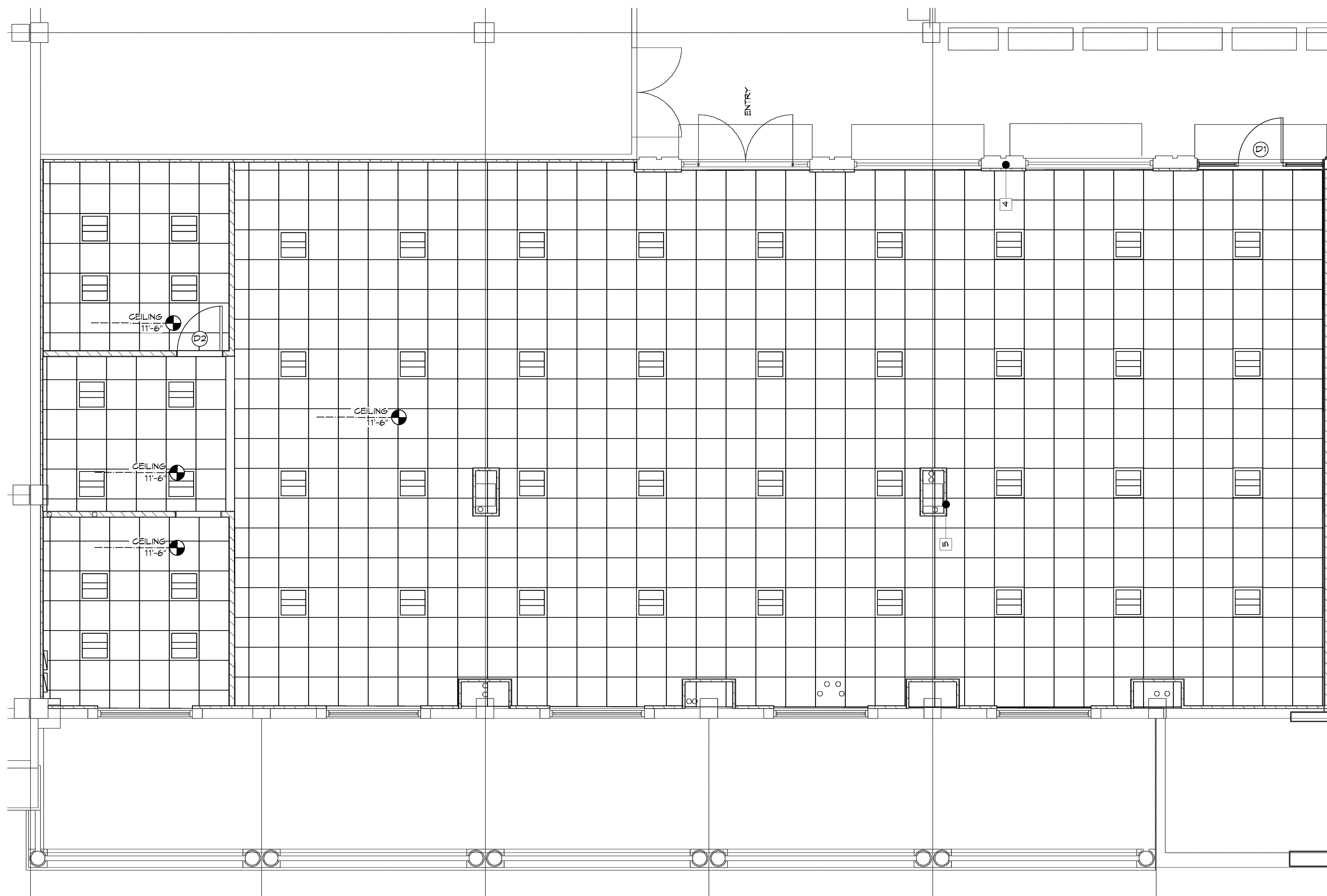
SEAL:



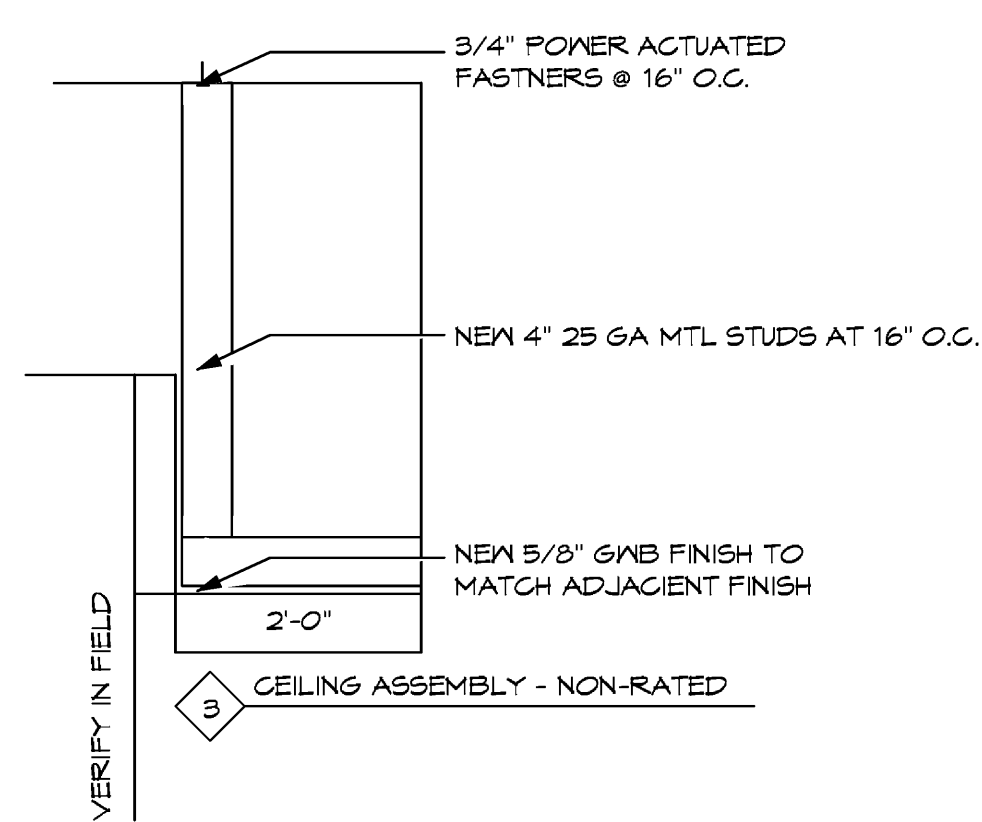
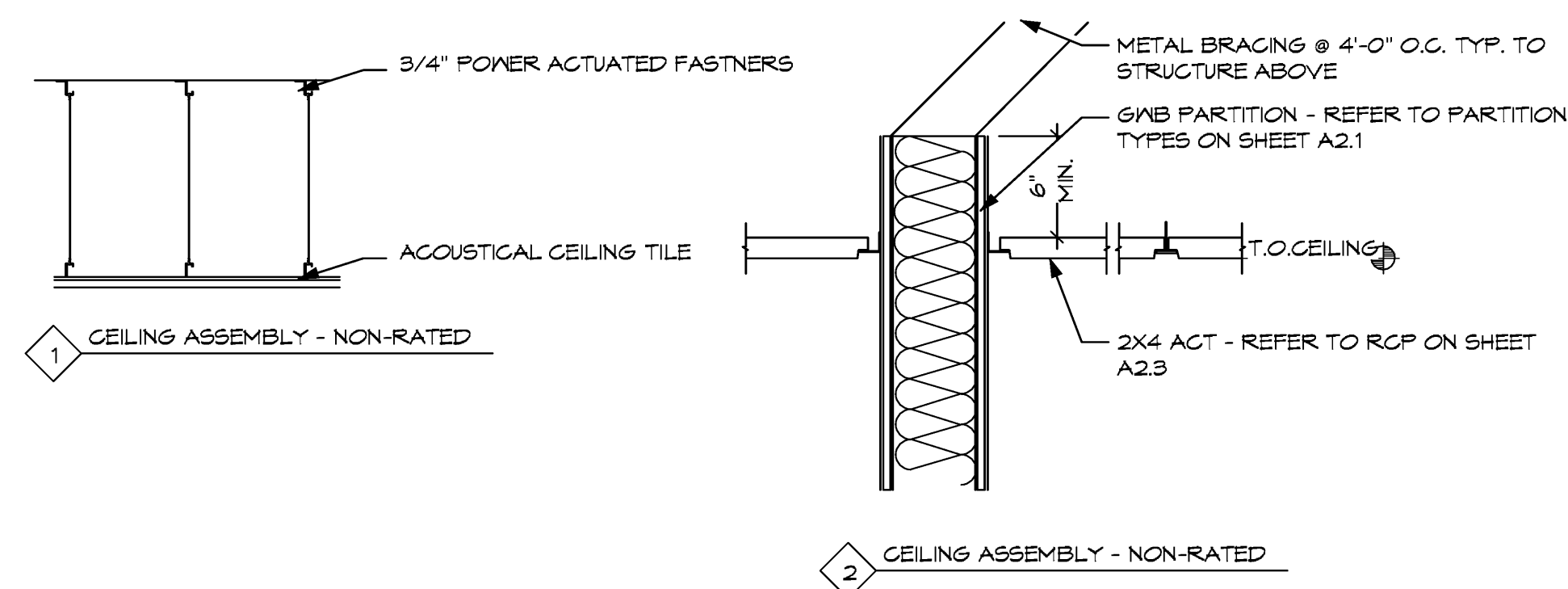
SHEET

**A2**

OF:



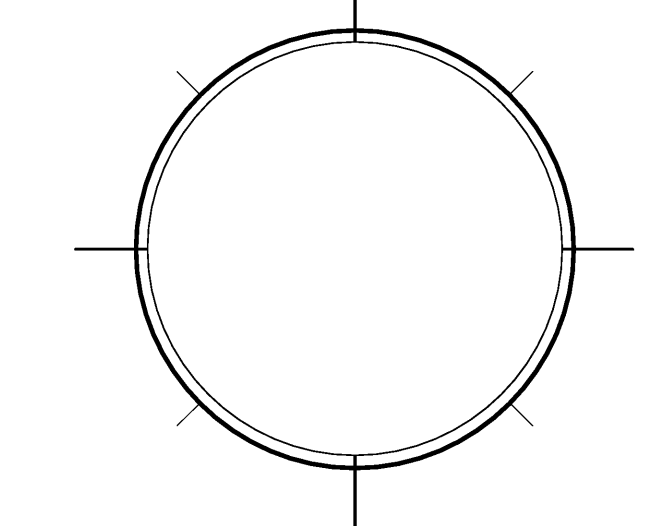
1 FLOOR PLAN  
A2 Scale: 1/4" = 1'-0"



DATE	9-9-11
SCALE	VARIABLES
DESIGNED BY	MESA
DRAWN BY	MESA
PROJECT #	111608

NO.	DATE	ISSUE NOTE
1	6/2/11	INTERIOR WALL
NO.	DATE	REVISION NOTE

OWNERSHIP AND USE OF THESE DOCUMENTS & SPECIFICATIONS AS INSTRUMENTS OF SERVICE ARE AND SHALL REMAIN THE PROPERTY OF THE ARCHITECT WHETHER THE PROJECT THEY ARE MADE FOR IS EXECUTED OR NOT. THEY SHALL NOT BE USED BY THE OWNER OR OTHERS ON OTHER PROJECTS OR FOR ADDITIONS ON OTHER PROJECTS BY OTHERS, EXCEPT BY AGREEMENT IN WRITING WITH ARCHITECT



**STRUCTURAL DESIGN CRITERIA & CODES:**

THIS STRUCTURE HAS BEEN DESIGNED IN ACCORDANCE WITH THE FLORIDA BUILDING CODE (FBC) 2007  
WIND LOADS ARE BASED UPON ANSI/ASCE 7-05 MINIMUM DESIGN LOADS FOR BUILDINGS AND OTHER STRUCTURES, PART 6. ALL PRIMARY FRAMING AND EXTERIOR ENVELOPE COMPONENTS AND CLADDING SHALL BE DESIGNED AND CONSTRUCTED TO RESIST THE LOADS AND FORCES DERIVED FROM THIS STANDARD.

**WIND DESIGN CRITERIA:**

BASE WIND SPEED:	140 MPH (3 SECOND GUST)
EXPOSURE:	C
IMPORTANCE FACTOR:	I=1.0
EAVE HEIGHT ABOVE GRADE:	40'-0"
RIDGE HEIGHT ABOVE GRADE:	40'-0"
BASIC VELOCITY PRESSURE (Q):	37 PSF

ACTUAL PRESSURES FOR SPECIFIC COMPONENTS AND CLADDING MATERIALS SHALL BE CALCULATED BASED UPON THE SPECIFIC TRIBUTARY AREA (IN SQ. FT.) CONSIDERED.

**NOTE:**

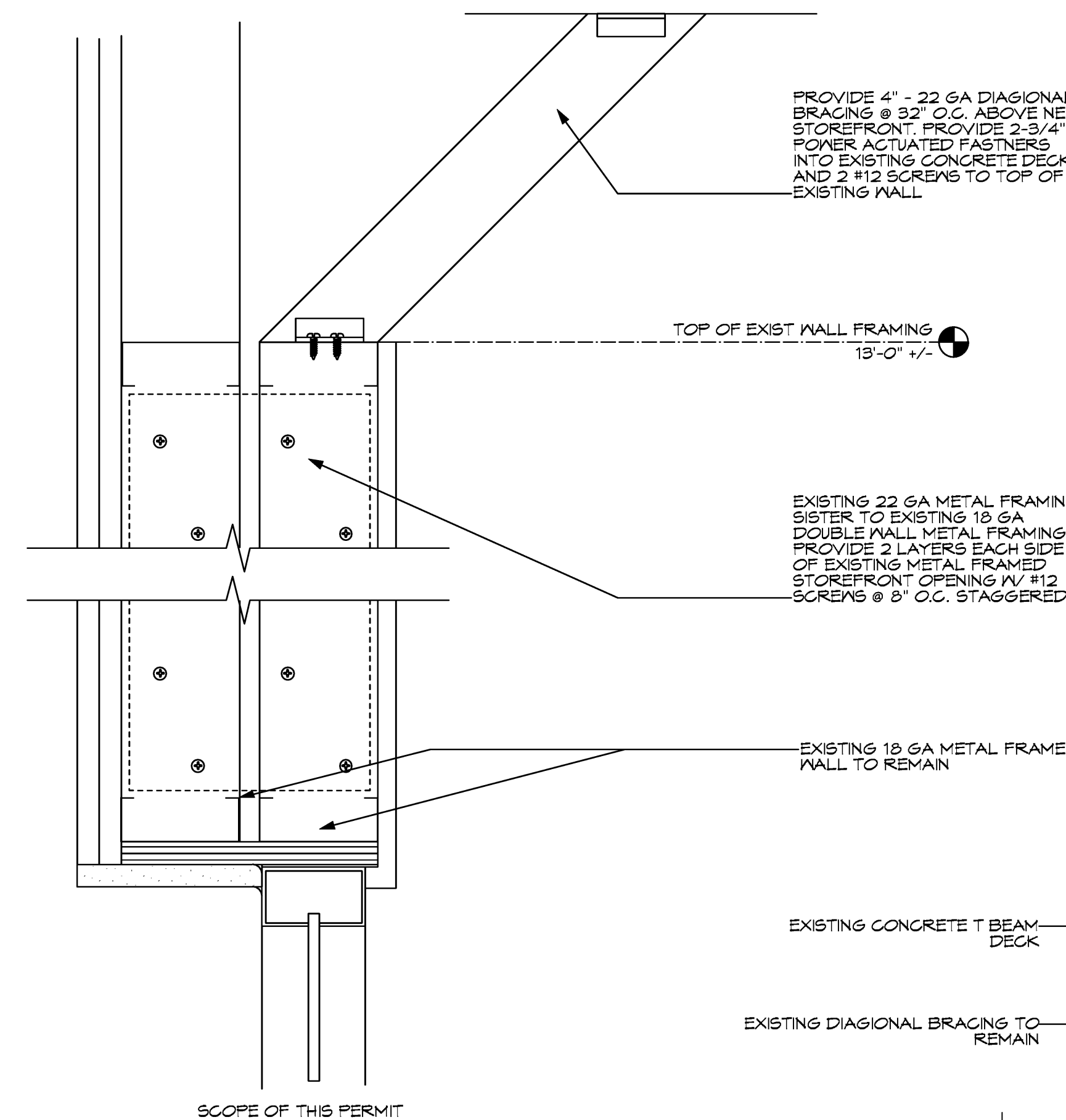
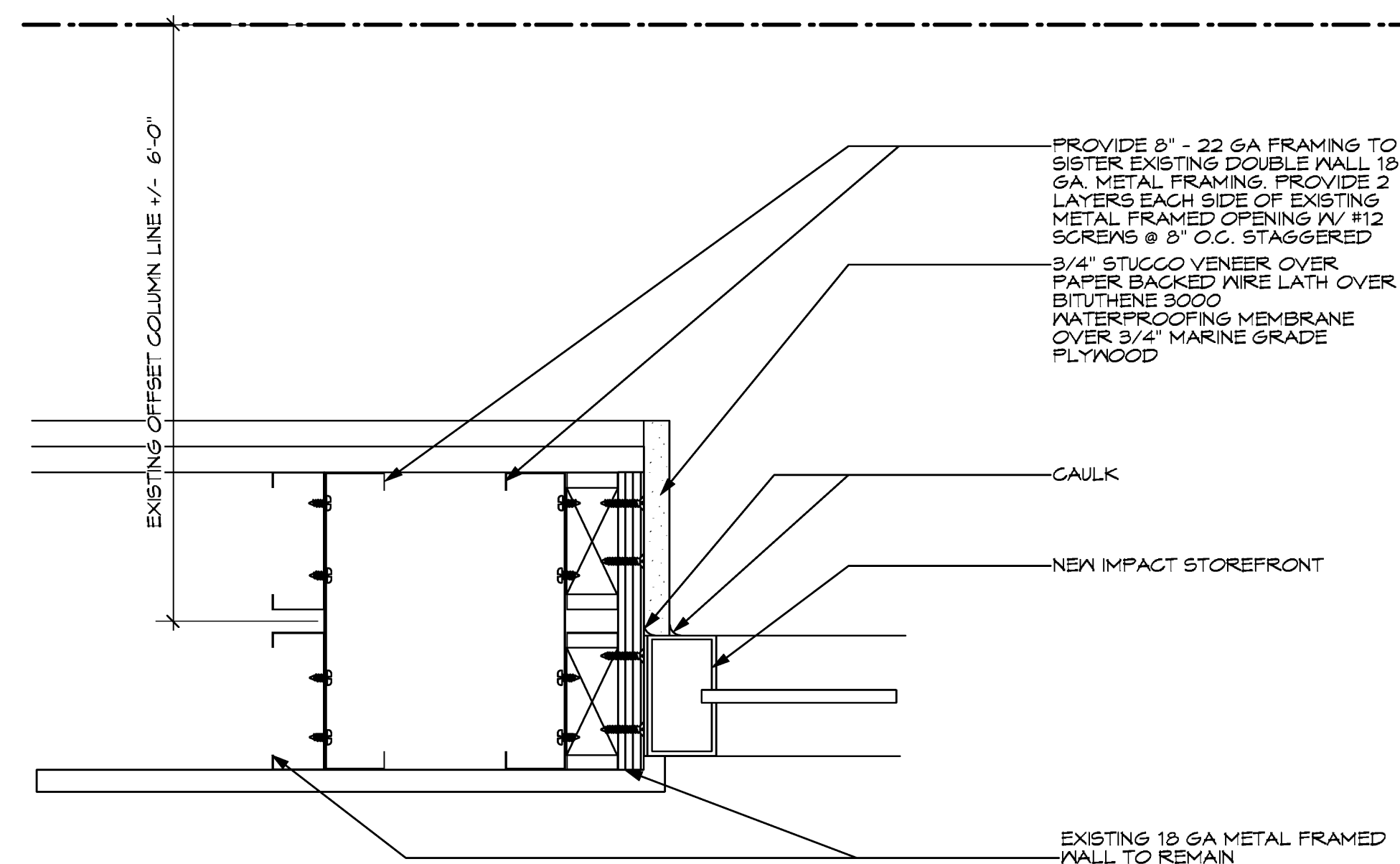
IT IS THE RESPONSIBILITY OF THE PRODUCE MANUFACTURER / SUPPLIER / INSTALLER TO PROVIDE EVIDENCE OF WIND PRESSURE (OR IMPACT) RESISTANCE COMPLIANCE (PRODUCT APPROVAL) TO THE BUILDING CODE AUTHORITY HAVING JURISDICTION. THE SUBMITTAL SHALL COMPLY WITH THE SPECIFIC DESIGN REQUIREMENTS OF THIS PROJECT. REFER TO CRITERIA THIS SHEET.

TWO STORY  
MEAN ROOF HEIGHT: 40'-0"  
COMPONENTS AND CLADDING DESIGN PRESSURE: 70.33 P.S.F. (WORST CASE)

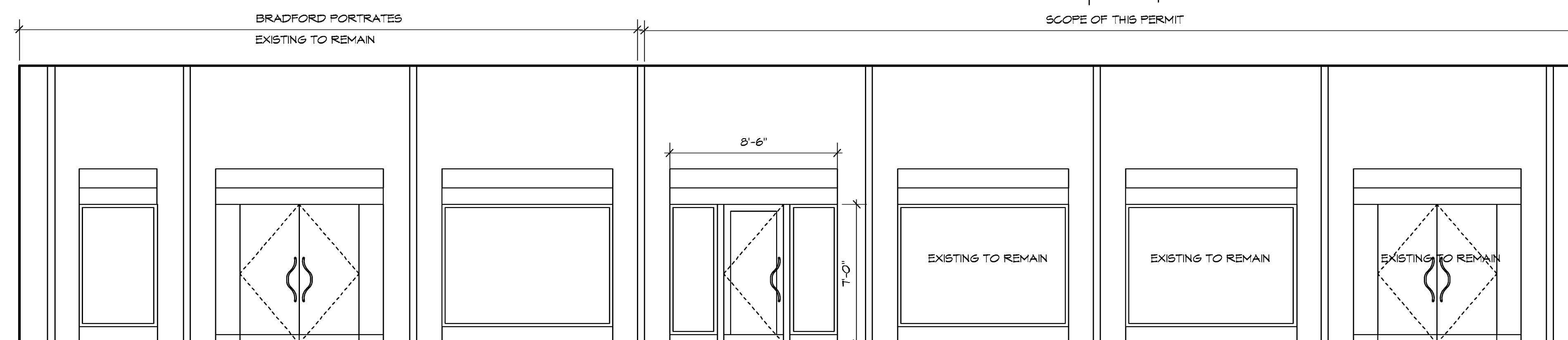
GLAZING PROTECTION  
THE INSTALLATION OF THE GLAZING PROTECTION HAVE BEEN CONSIDERED IN THE DESIGN SUPPORT STRUCTURE AS DESCRIBED AS FOLLOWS:

WIND PRESSURES:	2007 FBC, ASCE 7-05
REFERENCED DATA:	140 MPH (3 SECOND GUST)
WIND LOAD:	10% BUILDING WIDTH - 6'-0" MINIMUM
EDGE STRIP:	

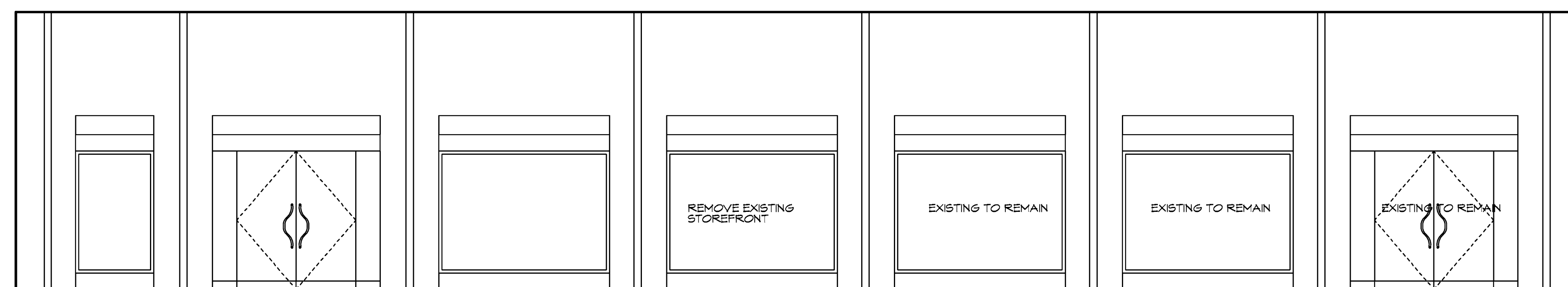
ELEVATION	EDGE ZONE PRESSURE	SUCTION INTERIOR ZONE PRESSURE	SUCTION PRESSURE
TWO STORY	+52.6 PSF	-61.86 PSF	+52.6 PSF
			-70.33 PSF



NEW STOREFRONT SHALL BE IMPACT RESISTANT W/ CURRENT DADE COUNTY PRODUCT APPROVAL  
1. COLOR SHALL MATCH ADJACENT STOREFRONT COLOR  
2. ADA COMPLIANT DOOR HANDLE AND DOOR CLOSURE  
3. DOOR LEAF SHALL BE BUTT HINGE TYPE W/ SCREEN ADJUSTMENT  
GLAZING SHALL BE CLEAR TYPE



2 STOREFRONT ELEVATION OPTION A  
Scale: 1/4" = 1'-0"



1 EXISTING STOREFRONT ELEVATION  
Scale: 1/4" = 1'-0"

4 STOREFRONT ELEVATION  
Scale: 3/4" = 1'-0"

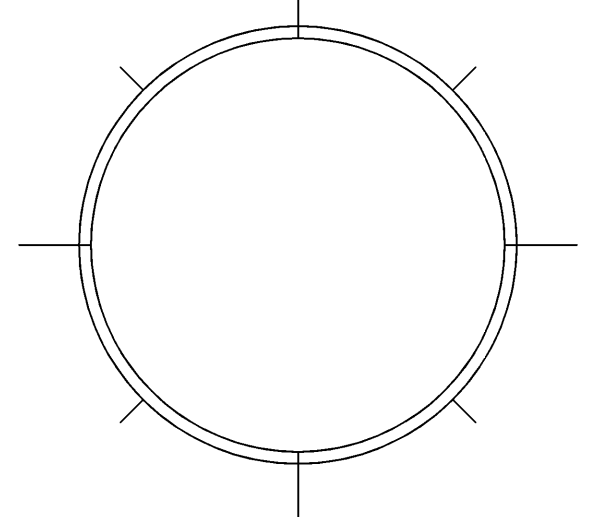
DATE	9-9-11
SCALE	VARIABLES
DESIGNED BY	MESA
DRAWN BY	MESA
PROJECT #	111608

NO.	DATE	ISSUE NOTE

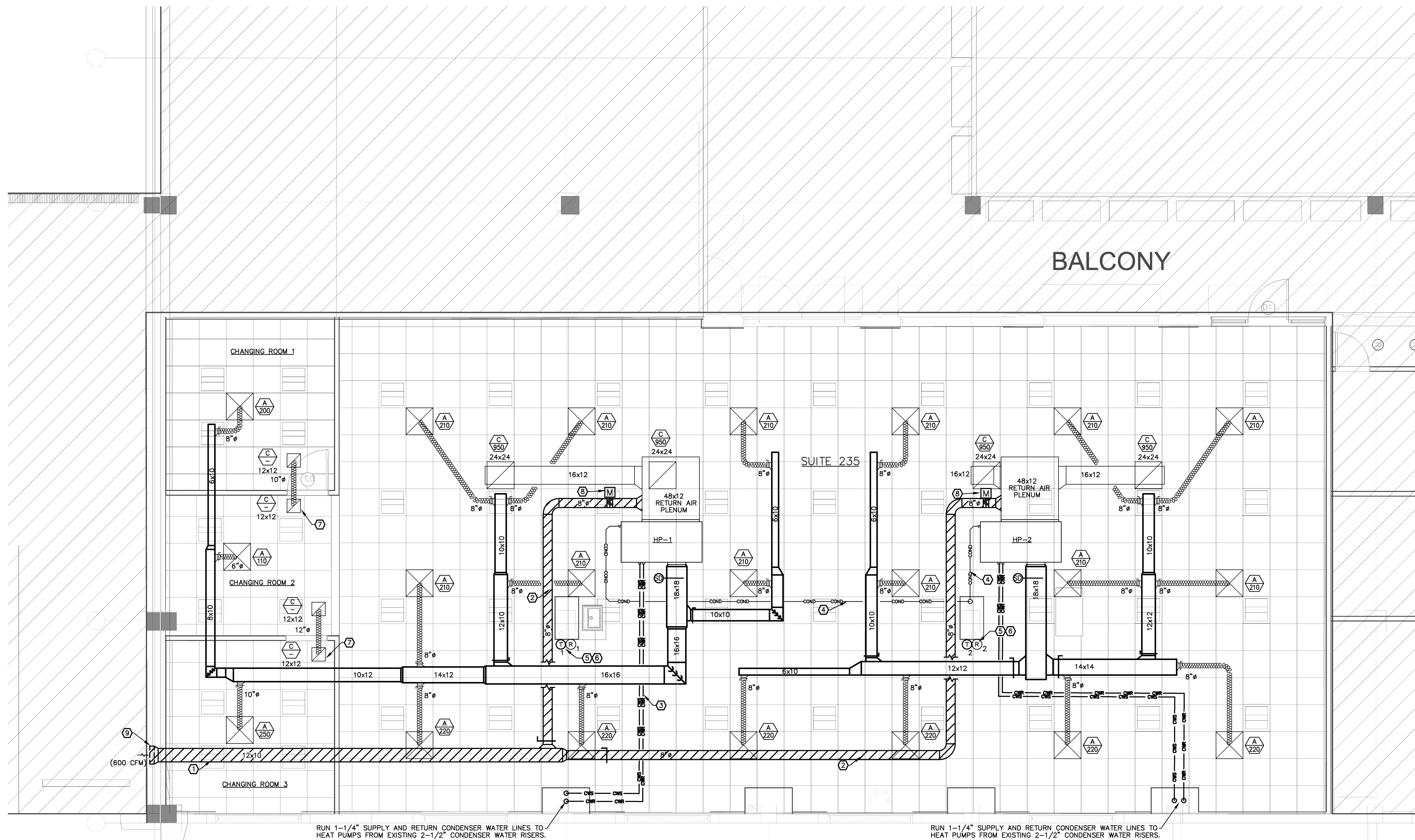
NO.	DATE	REVISION NOTE

OWNERSHIP AND USE OF THESE DOCUMENTS & SPECIFICATIONS AS INSTRUMENTS OF SERVICE ARE AND SHALL REMAIN THE PROPERTY OF THE ARCHITECT WHETHER THE PROJECT THEY ARE MADE FOR IS EXECUTED OR NOT. THEY SHALL NOT BE USED BY THE OWNER OR OTHERS ON OTHER PROJECTS OR FOR ADDITIONS ON OTHER PROJECTS BY OTHERS, EXCEPT BY AGREEMENT IN WRITING WITH ARCHITECT



**PLAN KEY NOTES**

- ① 12"x10" METAL OUTDOOR AIR DUCT FROM EXISTING WALL LOUVER.
- ② 8"Ø METAL OUTDOOR AIR DUCT TO 12"x10" METAL OUTDOOR AIR DUCT.
- ③ RUN 1-1/4" SUPPLY AND RETURN CONDENSER WATER LINES FROM HEAT PUMPS TO EXISTING 2-1/2" CONDENSER WATER RISERS.
- ④ 3/4" PVC CONDENSATE PIPE FROM HEAT PUMPS TO EXISTING 1" COPPER CONDENSATE RISER ABOVE CEILING.
- ⑤ PROGRAMMABLE THERMOSTAT.
- ⑥ REMOTE TEST STATION FOR SMOKE DETECTOR. TYPICAL.
- ⑦ RETURN AIR TRANSFER GRILLES SIZED PER FBC-MECH 601.4; TRANSFER GRILLES SIZED AT 50 SQ.IN. PER 100 CFM OF RETURN AIR AND DOORS UNDERCUT 1". TRANSFER DUCT SIZED AT 1.5 TIMES SUPPLY DUCT SIZE ENTERING THE SPACE.
- ⑧ MOTORIZED DAMPER (RUSKIN CD-50) W/ ELECTRIC PROPORTIONAL DAMPER ACTUATOR (BELIMO-LF24-SR) CONTROLLED BY AIR HANDLING UNIT FAN MOTOR ACTIVATION, TO OPEN WHEN AHU FAN OPERATING, AND CLOSE WHEN AHU FAN DEACTIVATED.
- ⑨ EXISTING 16"x12" WEATHER-PROOF LOUVER WITH BIRDSCREEN TO REMAIN.

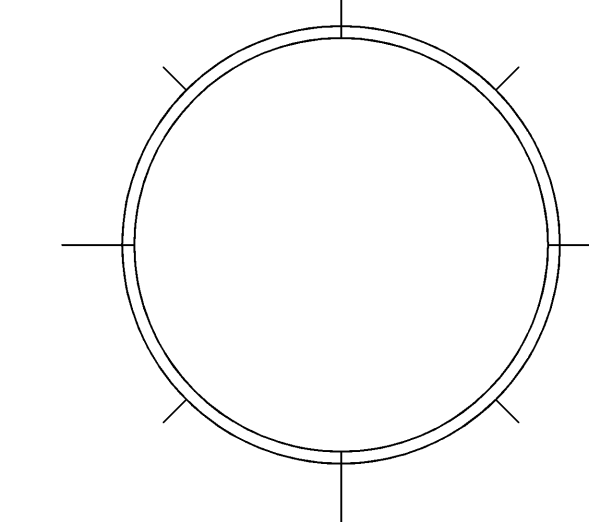


RUN 1-1/4" SUPPLY AND RETURN CONDENSER WATER LINES TO HEAT PUMPS FROM EXISTING 2-1/2" CONDENSER WATER RISERS.

RUN 1-1/4" SUPPLY AND RETURN CONDENSER WATER LINES TO HEAT PUMPS FROM EXISTING 2-1/2" CONDENSER WATER RISERS.

NO.	DATE	REVISION NOTE

OWNERSHIP AND USE OF THESE DOCUMENTS & SPECIFICATIONS AS INSTRUMENTS OF SERVICE ARE AND SHALL REMAIN THE PROPERTY OF THE ARCHITECT WHETHER THE PROJECT THEY ARE MADE FOR IS EXECUTED OR NOT. THEY SHALL NOT BE USED BY THE OWNER OR OTHERS ON OTHER PROJECTS OR FOR ADDITIONS ON OTHER PROJECTS BY OTHERS, EXCEPT BY AGREEMENT IN WRITING WITH ARCHITECT



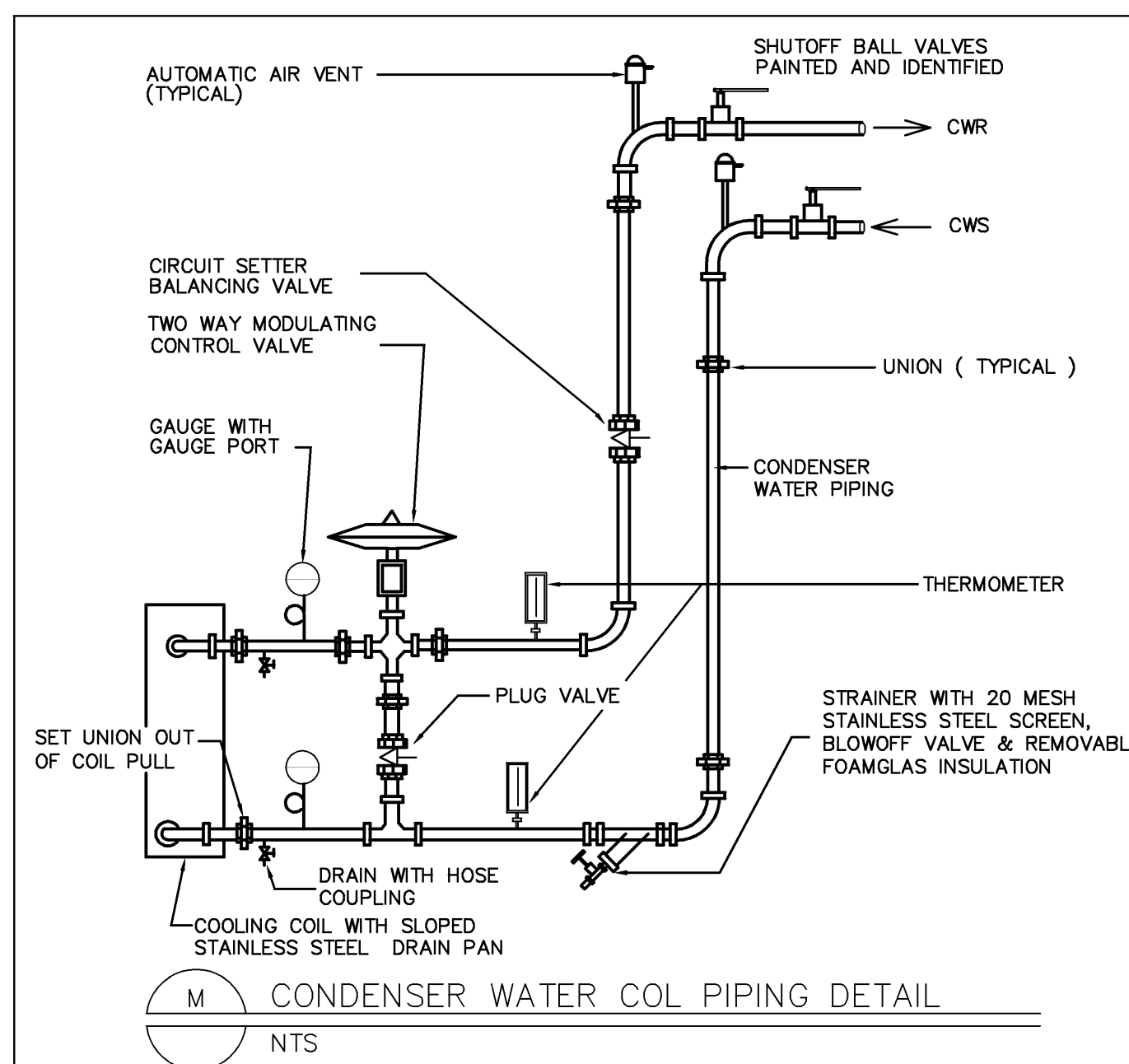
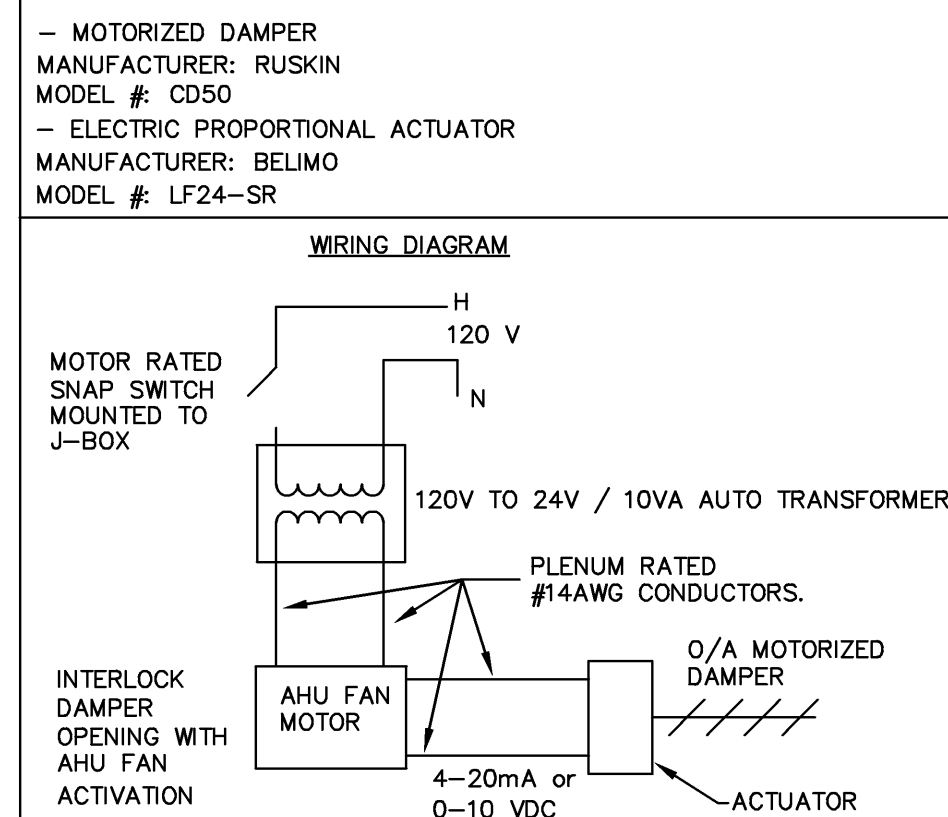
## HEAT PUMP SCHEDULE

SYSTEM NO.	MANUF. BASED ON	AREA SERVED	NOM. CAPACITY TONS	MARK	MODEL #	COOLING CAPACITY - CALCULATED											HEATING CAPACITY - CALCULATED			AMB. TEMP.		BLOWER FAN			COMPRESSOR		ELECTRICAL		APPROX. WEIGHT	REMARKS						
						FAN	ENT. AIR		LVG. AIR		ENT. WATER		LVG. WATER		TOTAL			ENT. WATER	LVG. WATER	COP		SUMMER	WINTER	NO.	HP	F.L.A. (EA.)	R.L.A. (EA.)	L.R.A. (EA.)			MIN. CIRCUIT AMPS	MAXIMUM OVERCURRENT PROTECT.	VOLTAGE V/PH/Hz			
HP-1	CLIMATE MASTER	SUITE 235	6.0	HP-1	GLH-072BFC3AC	2,200	300	0.5	45,900	65,370	77.7	66.3	58.5	57.4	80.0	90.0	9.0	2.6	11.5	87,200	80.0	90.0	4.53	91.0	45	1	1.5	2.4	2	4.9	33.0	13.4	15.0	460/3/60	542	1,2,3,4,5,6,7,8
HP-2	CLIMATE MASTER	SUITE 235	6.0	HP-2	GLH-072BFC3AC	2,200	300	0.5	45,900	65,370	77.7	66.3	58.5	57.4	80.0	90.0	9.0	2.6	11.5	87,200	80.0	90.0	4.53	91.0	45	1	1.5	2.4	2	4.9	33.0	13.4	15.0	460/3/60	542	1,2,3,4,5,6,7,8

- FURNISH HEAT PUMP WITH MANUFACTURER HOSE KIT TO INCLUDE:  
SHUT OFF VALVES, P/T PLUGS, HIGH PRESSURE STAINLESS STEEL BRAID HOSE,  
Y TYPE STRAINER WITH BLOWDOWN VALVE, J TYPE SWIVEL CONNECTION, AND BALANCING VALVES.
- FURNISH AHU WITH A MINIMUM OF 30% EFF. FILTERS, 2" PLEATED.
- PROVIDE PROGRAMMABLE THERMOSTAT WITH WEEKEND SETTINGS.
- EXISTING CLIMATE MASTER HEAT PUMPS TO BE PROVIDED BY THE LANDLORD AND INSTALLED IN NEW SPACE.

- INCLUDE UNIT MOUNTED DISCONNECT SWITCH.

### MOTORIZED DAMPER DETAIL



### MECHANICAL LEGEND

SYMBOL	DESCRIPTION
O.A.	OUTSIDE AIR
O.A.L.	OUTSIDE AIR LOUVER
R.A.	RETURN AIR
S.A.	SUPPLY AIR
T.A.	TRANSFER AIR
E.A.	EXHAUST AIR
C.F.M.	CUBIC FEET PER MINUTE
⊖	THERMOSTAT
⊕	HUMIDISTAT
⊙	SMOKE DETECTOR
⊗	REMOTE TEST STATION
— —	UL LISTED FIRE DAMPER
— —	VOLUME DAMPER
— —	BACKDRAFT DAMPER
— —	MANUAL VOLUME DAMPER
— —	MOTOR OPERATED DAMPER
— —	TWIST-IN COLLAR WITH DAMPER
⊠	CEILING DIFFUSER - SUPPLY AIR
⊠	SIDE-WALL DIFFUSER - SUPPLY AIR
⊠	TURNING VANES - SUPPLY AIR
⊠	DISTRIBUTION TRIANGLE - SUPPLY AIR
— —	FIBERGLASS DUCTWORK - SUPPLY AIR
— —	FIBERGLASS DUCTWORK - RETURN AIR
— —	FLEXIBLE DUCT
— —	NEW METAL OUTDOOR AIR DUCT
— —	CW-S CONDENSER WATER - SUPPLY
— —	CW-R CONDENSER WATER - RETURN
— —	COND- CONDENSATE WATER PIPING

### MECHANICAL NOTES

- DO NOT SCALE THE DRAWINGS. REFER TO ARCHITECTURAL PLANS FOR ALL DIMENSIONS.
- COORDINATE EXACT LOCATION OF ALL DIFFUSERS AND RETURNS WITH ARCHITECTURAL REFLECTED CEILING PLAN.
- ALL WORK SHALL COMPLY WITH THE LATEST EDITION OF THE FLORIDA BUILDING AND MECHANICAL CODE, NFPA-90A, AND LOCAL CODE AMENDMENTS.
- ALL OUTSIDE AIR DUCTS OR INTAKES SHALL HAVE DAMPERS.
- ALL VENTILATION DUCTS SHALL BE SHEET METAL, INSTALLED, SEALED AND SUPPORTED IN ACCORDANCE WITH THE LATEST EDITION "SMACNA" LOW VELOCITY DUCT CONSTRUCTION STANDARDS AND DETAILS ON THESE PLANS.
- ALL EXHAUST DUCT SHALL BE SHEET METAL, INSTALLED, SEALED AND SUPPORTED IN ACCORDANCE WITH THE LATEST EDITION OF "SMACNA" LOW VELOCITY DUCT CONSTRUCTION STANDARDS AND DETAILS ON THESE PLANS.
- AIR CONDITIONING SUPPLY & RETURN DUCTS SHALL BE FIBERGLASS, TYPE 800 EI INSTALLED, SEALED AND REINFORCED IN ACCORDANCE WITH THE LATEST EDITION OF "NAIMA" FIBROUS GLASS DUCT CONSTRUCTION STANDARDS AND DETAILS ON THESE PLANS. 0-1" STATIC PRESSURE CLASS, (+/-), UNLESS OTHERWISE NOTED.
- ALL AIR CONDITIONING DUCTWORK SHALL BE RIGID FIBERGLASS DUCT BOARD. INSTALLED IN ACCORDANCE WITH NAIMA, FIBROUS GLASS DUCT MANUAL. ALL DUCT IN ATTIC SPACE SHALL BE R-6.0 MINIMUM. DUCT WORK BETWEEN FLOOR OR CONDITIONED SPACE SHALL BE R-4.2 MINIMUM. FLEX DUCT R-4.2/6.0 SHALL BE USED IF THERE IS LIMITED SPACE.
- REFRIGERANT PIPING SHALL BE COPPER, REFRIGERATION GRADE, SOFT TEMPER. SEALED AT THE MILL. INSULATE SUCTION PIPE INDOORS: WITH 3/8" IMCOA POLYOLEFIN INSULATION; OUTDOORS: 3/4" IMCOA POLYOLEFIN INSULATION. CIRCULATE DRY NITROGEN THROUGH PIPING WHEN SOLDERING. TEST FOR LEAKS PRIOR TO CHARGING SYSTEM WITH R-410A REFRIGERANT.
- CONDENSATE DRAINS SHALL BE SCHEDULE 40 PVC PIPING OR COPPER IF LOCATED IN A RETURN AIR PLENUM. INSULATE WITH 1/2" ARMAFLEX SELF-SEAL.
- FLEXIBLE DUCTS SHALL BE R-6.0 MINIMUM UL 181 CLASS 1 CONSTRUCTED WITH A POLYESTER LAMINATED SMOOTH INNER CORE THAT ENCAPSULATES A STEEL WIRE HELIX. THE DOUBLE CORE IS WRAPPED IN A THICK BLANKET OF FIBERGLASS INSULATION AND SHEATHED IN A REINFORCED METALLIZED POLYESTER JACKET.
- PROVIDE CERTIFIED TEST & BALANCE REPORT AT COMPLETION OF PROJECT PRIOR TO FINAL INSPECTION.
- ALL CONDENSER WATER PIPING TO WATER SOURCE HEAT PUMP AIR HANDLING UNITS SHALL BE VICTAULIC SCHEDULE 40 STEEL PIPE OR TYPE L COPPER, EXCEPT FOR SIZES UNDER 2" THIS PIPING SHALL BE TYPE L COPPER. CONNECTIONS BETWEEN DISMILAR METALS SHALL BE MADE WITH DIELECTRIC FITTINGS.
- CONDENSATE DRAIN PIPING SHALL BE INSULATED WITH 3/4 INCH THICK ARMSTRONG "ARMAFLEX" OR EQUAL. EXTERIOR INSULATION SHALL BE COATED WITH ULTRAVIOLET RESISTANT MATERIAL IN ACCORDANCE WITH THE MANUFACTURER'S RECOMMENDATIONS.
- PIPING HANGERS SHALL BE SPACED SO AS TO PREVENT SAG AND PERMIT PROPER DRAINAGE AND SHALL NOT BE SPACED MORE THAN EIGHT FEET APART UNLESS A GREATER SPACE IS DEFINITELY INDICATED ON THE DRAWINGS. A HANGER SHALL BE PLACED WITHIN (1) FOOT OF EACH HORIZONTAL ELBOW.

### OUTDOOR AIR CALCULATION

AS PER FLORIDA MECHANICAL CODE, ASHRAE 62-2007 TABLE 2, OUTDOOR AIR REQUIREMENTS ARE:

#### HP-1, 2

AREA SERVED = 3,177 SQ.FT.

#### (RETAIL)

TOTAL AREA = 2,689 SQ. FT.  
TOTAL OCCUPANCY = 30 PEOPLE  
TOTAL OUTSIDE AIR = 30 PEOPLE X (7.5 CFM PER PERSON) = 225 CFM  
TOTAL OUTSIDE AIR = 2,689 SQ. FT. X (0.12 CFM/FT) = 322 CFM

#### (OFFICE)

TOTAL AREA = 488 SQ. FT.  
TOTAL OCCUPANCY = 4 PEOPLE  
TOTAL OUTSIDE AIR = 4 PEOPLE X (5 CFM PER PERSON) = 20 CFM  
TOTAL OUTSIDE AIR = 488 SQ. FT. X (0.06 CFM/FT) = 29 CFM

TOTAL OUTSIDE AIR REQUIRED = 526 CFM  
TOTAL OUTSIDE AIR PROVIDED = 600 CFM

ACCEPTABLE AIR QUALITY IS ACHIEVED WITHIN THE SPACE BY CONTROLLING KNOWN AND SPECIFIABLE CONTAMINANTS. VENTILATION RATE PROCEDURE HAS BEEN USED TO ACHIEVE ACCEPTABLE INDOOR AIR QUALITY. THE DESIGN WILL NEED TO BE RE-EVALUATED IF, AT A LATER TIME, SPACE USE CHANGES OCCUR OR IF UNUSUAL CONTAMINANTS OR UNUSUALLY STRONG SOURCES OF SPECIFIC CONTAMINANTS ARE TO BE INTRODUCED INTO THE SPACE INCLUDING ENVIRONMENTAL CIGARETTES, PIPE OR COOK SMOKE. CHANGES IN SPACE USE, CONTAMINANTS, OR OPERATION MAY REQUIRE A RE-EVALUATION OF THE DESIGN AND IMPLEMENTATION OF NEEDED CHANGES.

### AIR DISTRIBUTION SCHEDULE

SYMBOL	SERVICE	DESCRIPTION	MFG. MODEL NO.
A	CEILING SUPPLY REGISTERS	LOWERED SUPPLY CEILING DIFFUSER. ALUMINUM CONSTRUCTION. FLUSH FACE PANEL. FINISH SHALL BE WHITE ENAMEL. 24" X 24" MODULE SIZE WITH ROUND NECK SIZES AS SHOWN ON PLANS.	TITUS INDUSTRIES INC. MODEL NO. TDC-A
B	CEILING SUPPLY REGISTERS	LOWERED SUPPLY CEILING GRILLE. ALUMINUM CONSTRUCTION. FLUSH FACE PANEL. FINISH SHALL BE WHITE ENAMEL. 3/4" SPACING, SURFACE MOUNTED. 35° DEFLECTION.	TITUS INDUSTRIES INC. MODEL NO. 301-FL
C	CEILING SUPPLY GRILLE	LOWERED RETURN CEILING GRILLE. ALUMINUM CONSTRUCTION. FLUSH FACE PANEL. FINISH SHALL BE WHITE ENAMEL. 3/4" SPACING, SURFACE MOUNTED. 35° DEFLECTION.	TITUS INDUSTRIES INC. MODEL NO. 350FL

**TENANT IMPROVEMENT  
MODIFICATIONS  
TO**

150 WORTH AVENUE UNIT 235  
PALM BEACH  
FLORIDA 33480

**TITLE  
MECHANICAL  
NOTES & DETAILS**

DRAWING INFO

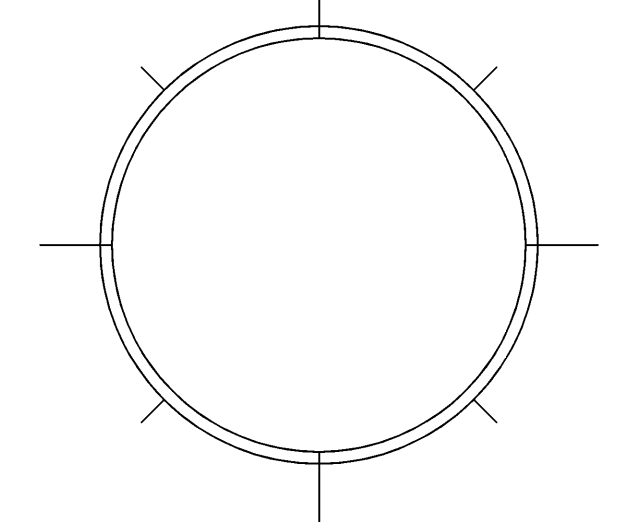
DATE	9-9-11
SCALE	VARIABLES
DESIGNED BY	MESA
DRAWN BY	MESA
PROJECT #	111608

REVISIONS AND ISSUE

NO.	DATE	ISSUE NOTE

OWNERSHIP AND USE OF THESE DOCUMENTS & SPECIFICATIONS AS INSTRUMENTS OF SERVICE ARE AND SHALL REMAIN THE PROPERTY OF THE ARCHITECT WHETHER THE PROJECT THEY ARE MADE FOR IS EXECUTED OR NOT. THEY SHALL NOT BE USED BY THE OWNER OR OTHERS ON OTHER PROJECTS OR FOR ADDITIONS ON OTHER PROJECTS BY OTHERS, EXCEPT BY AGREEMENT IN WRITING WITH ARCHITECT

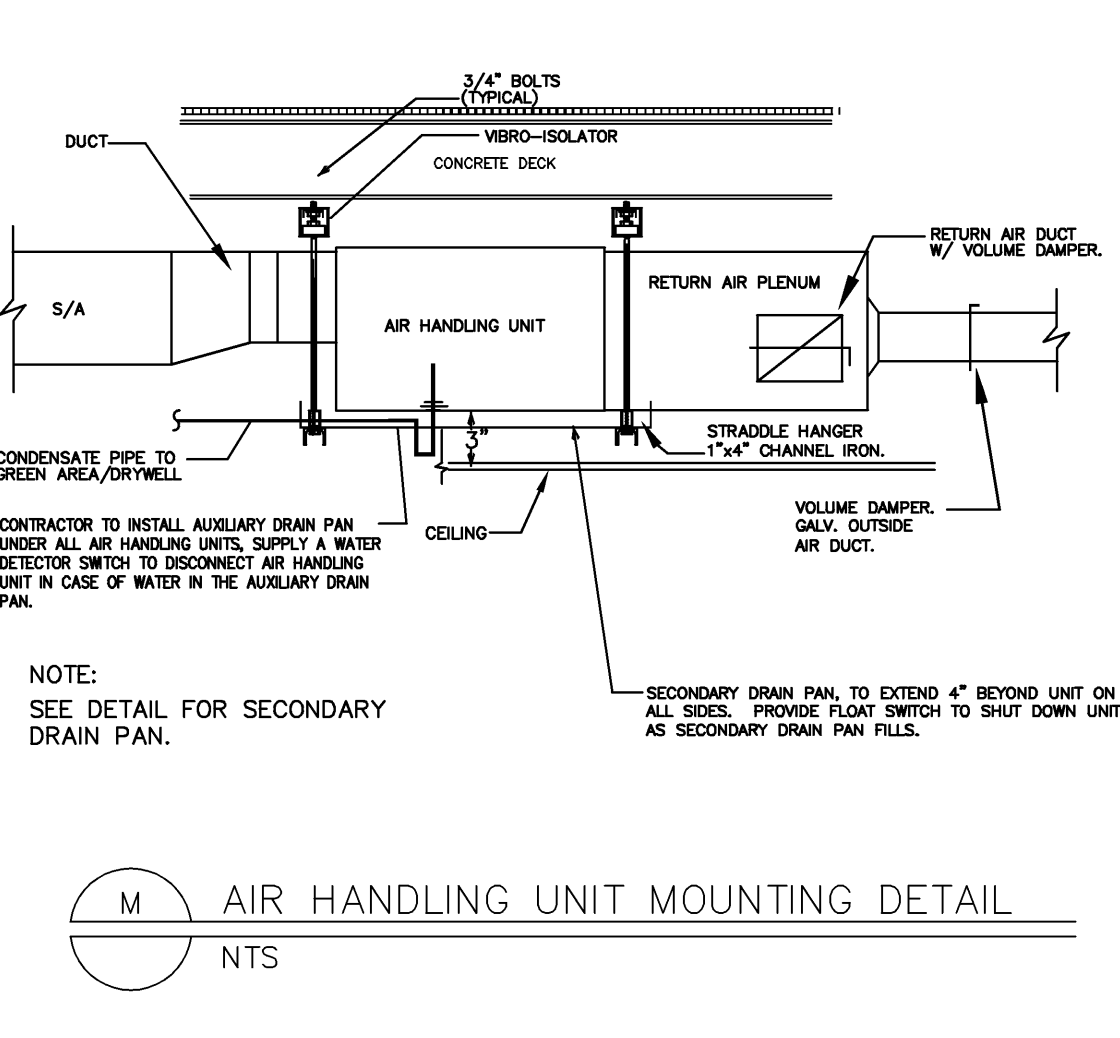
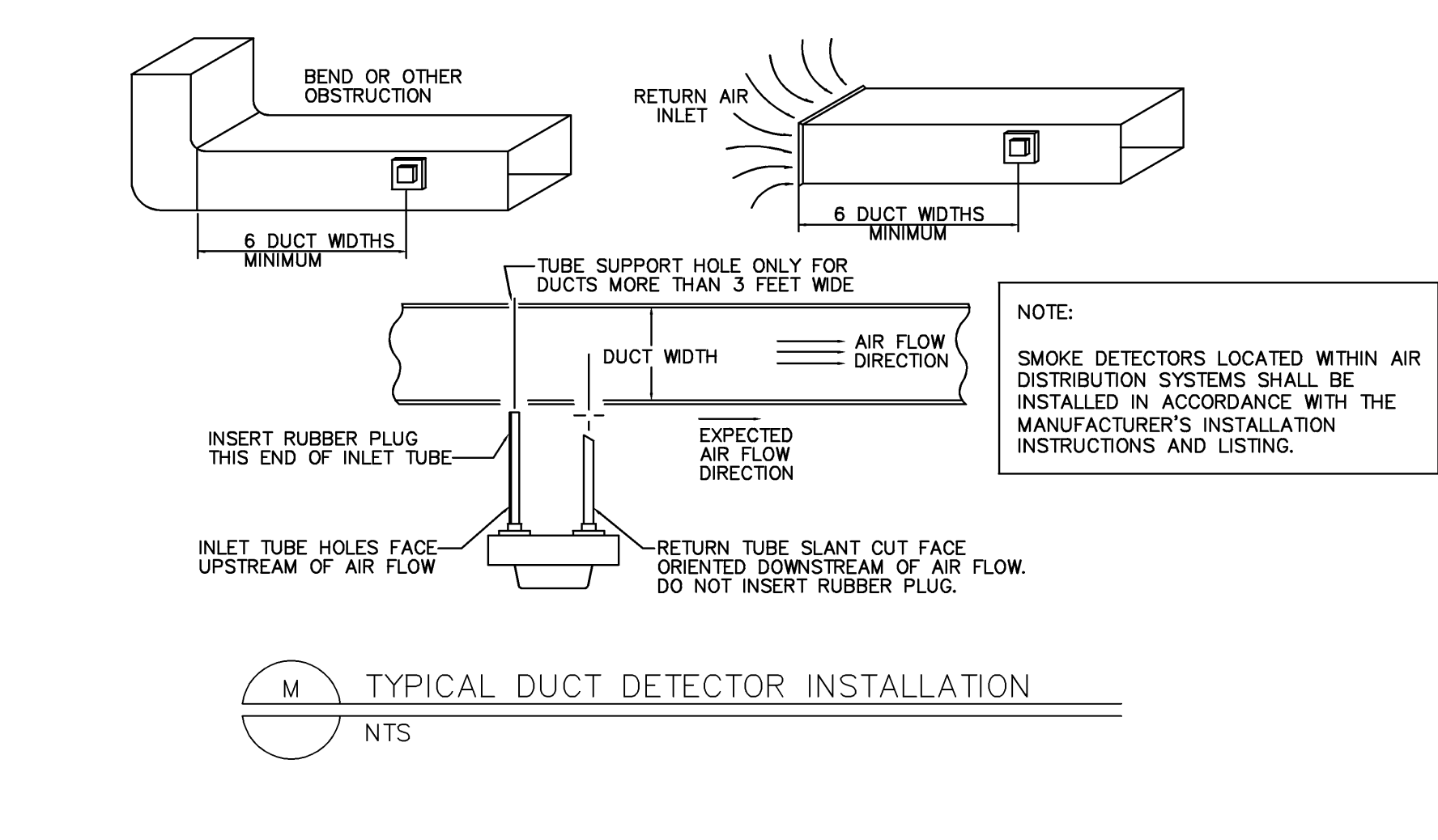
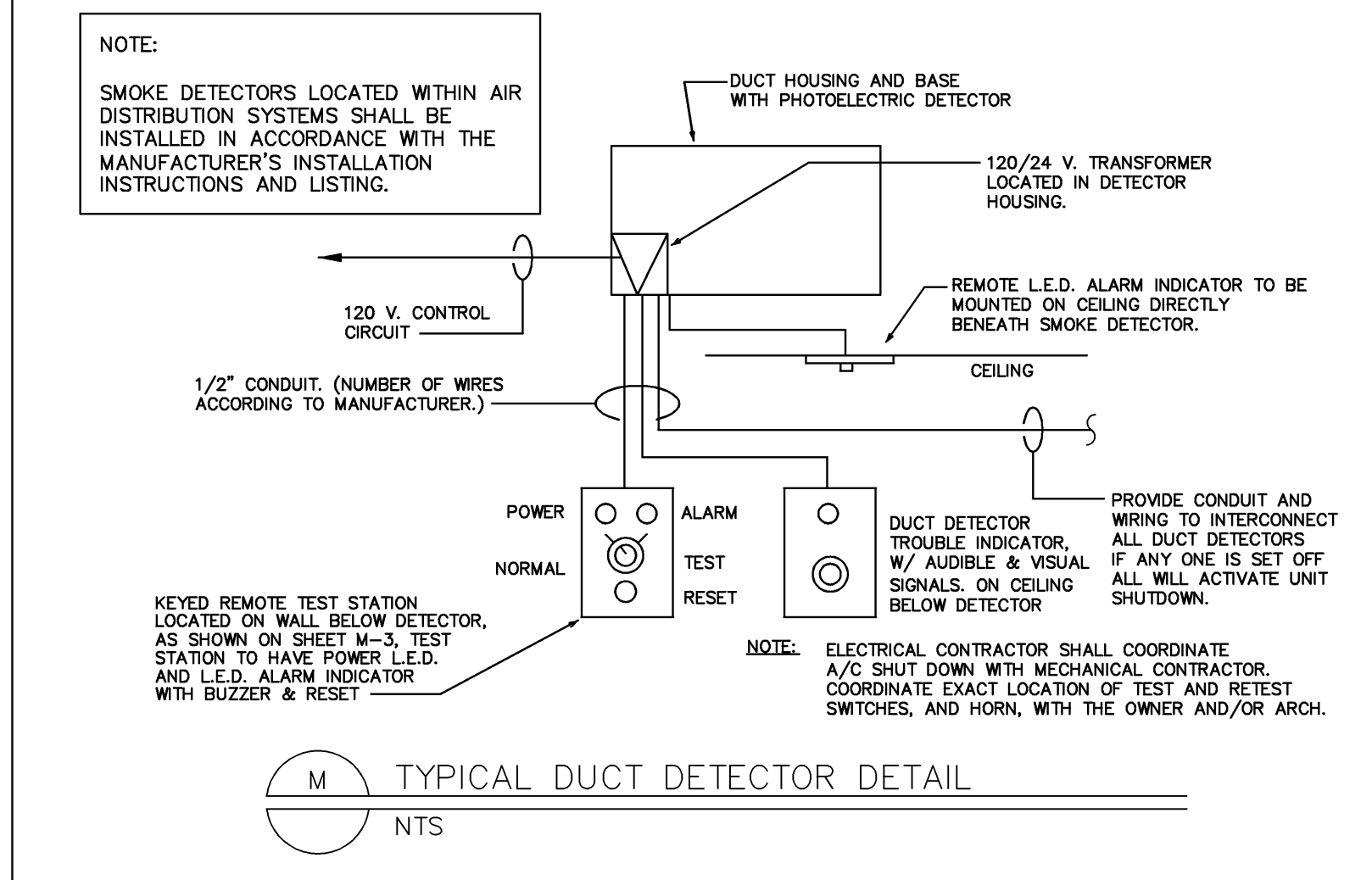
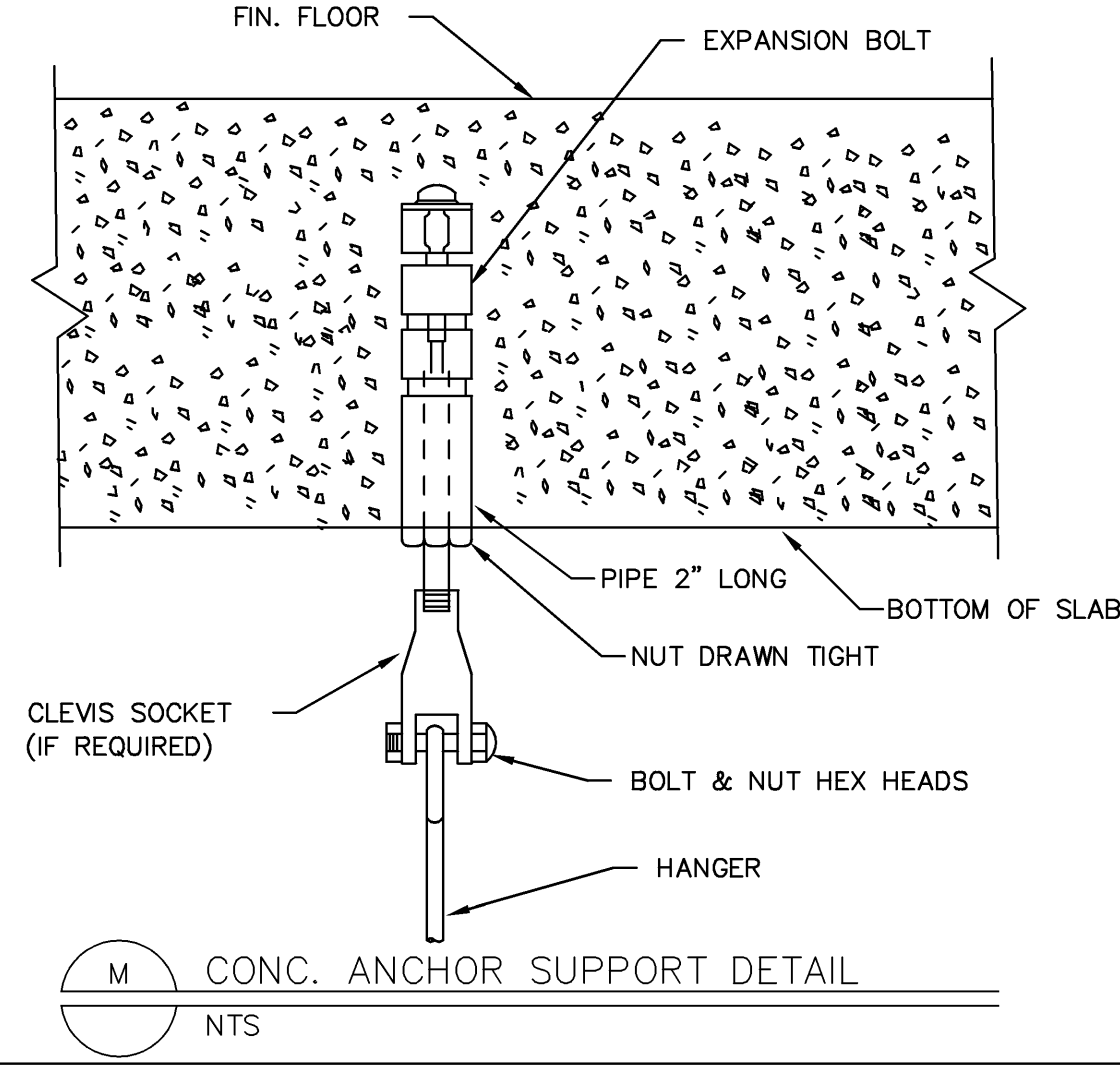
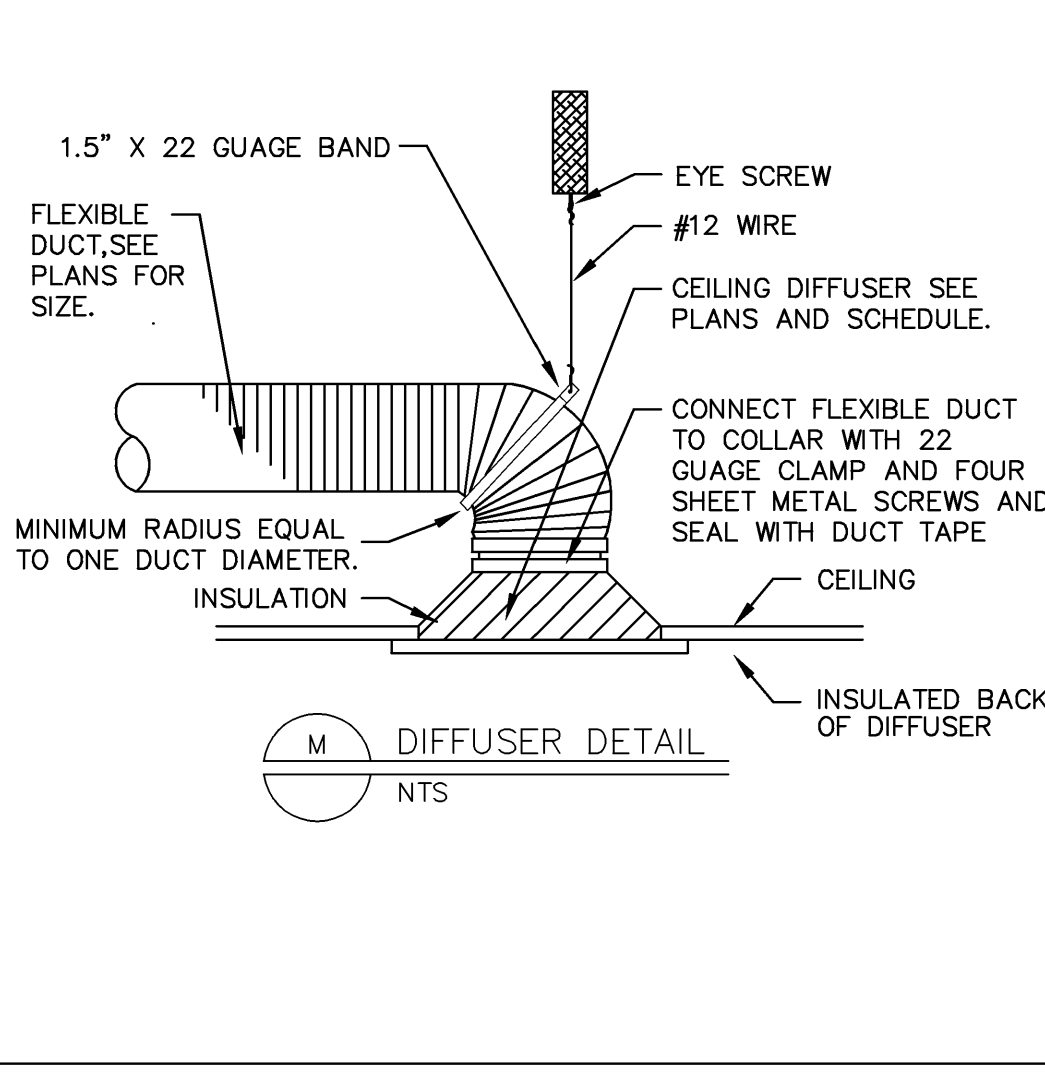
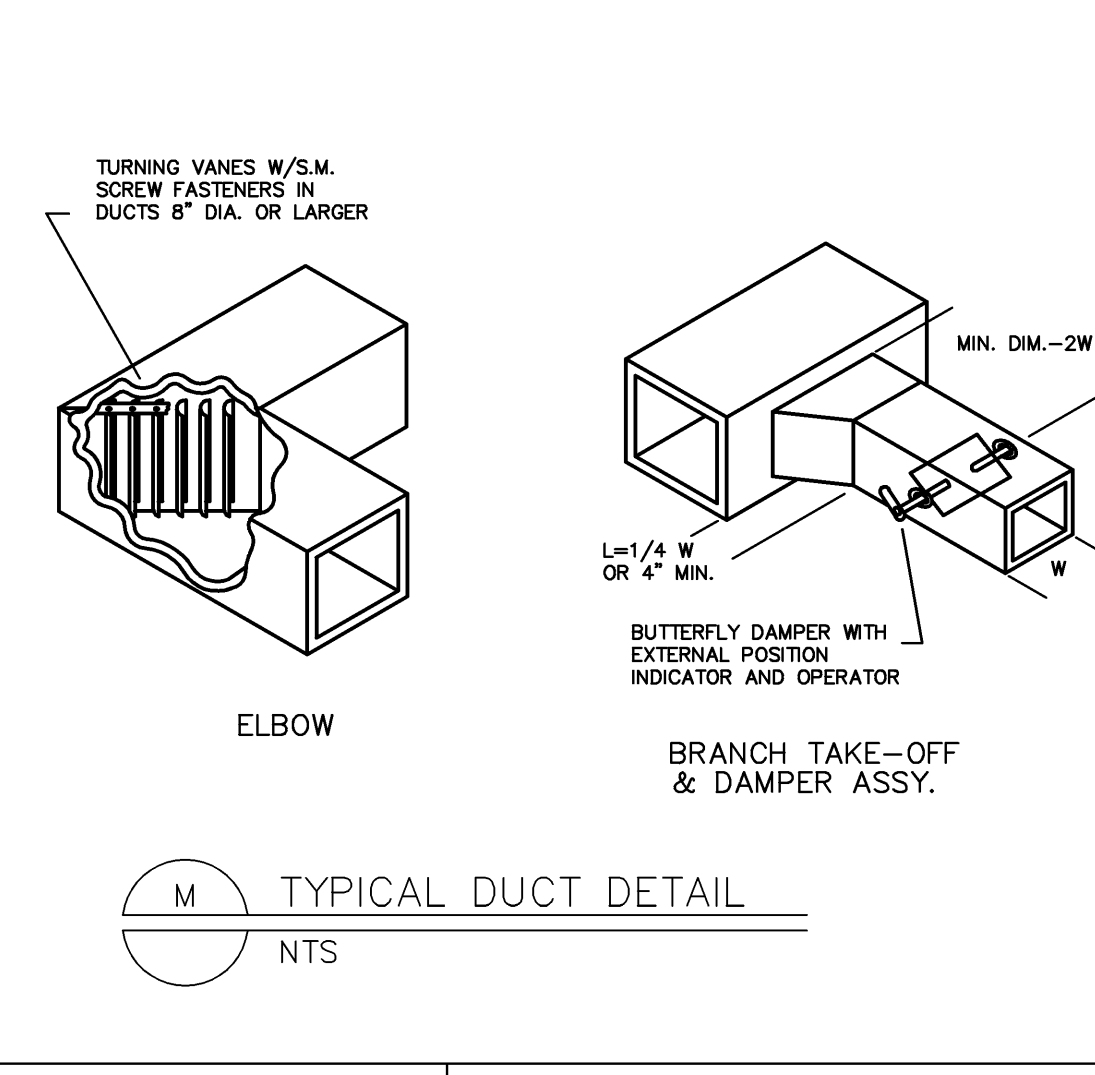
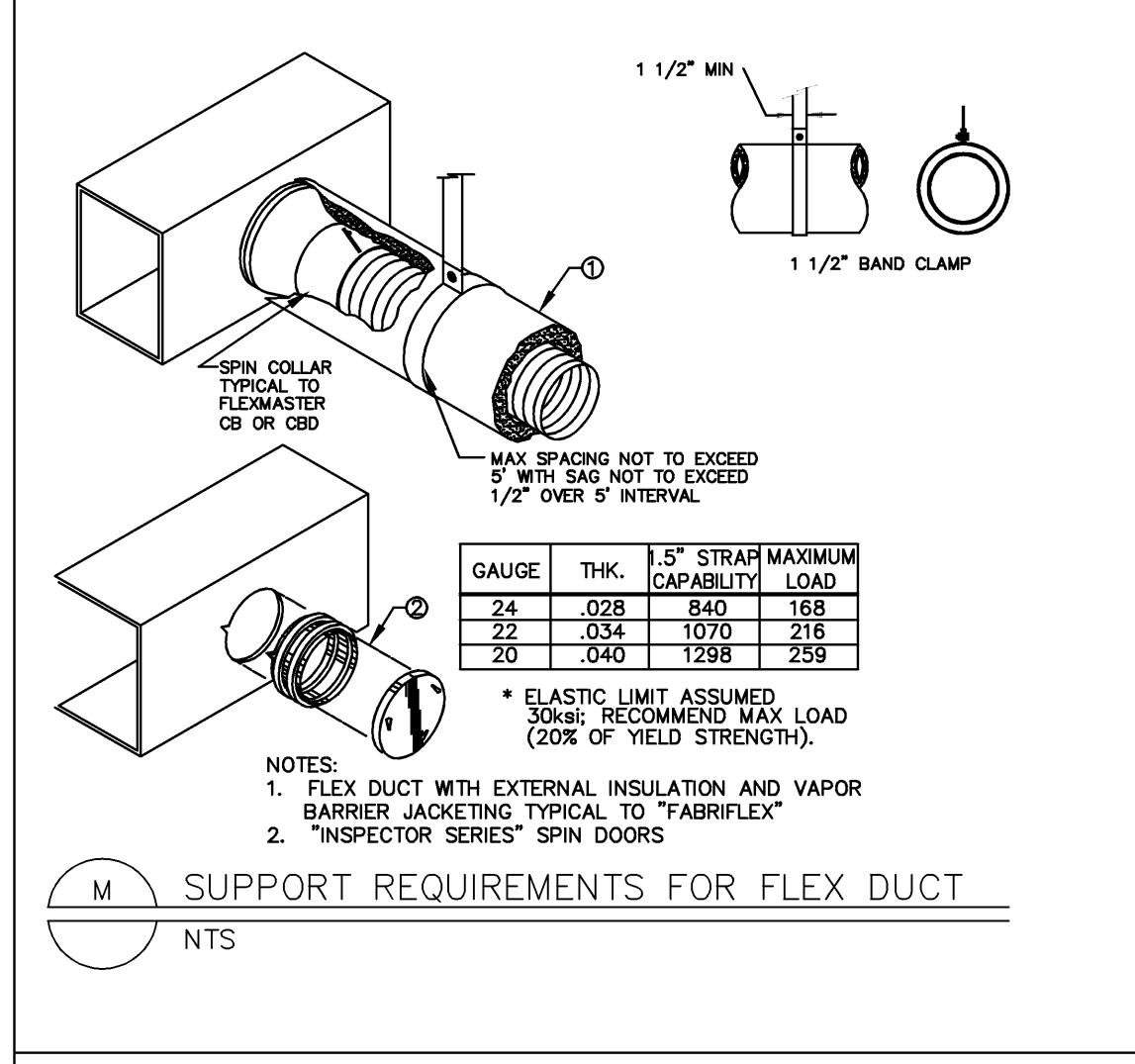
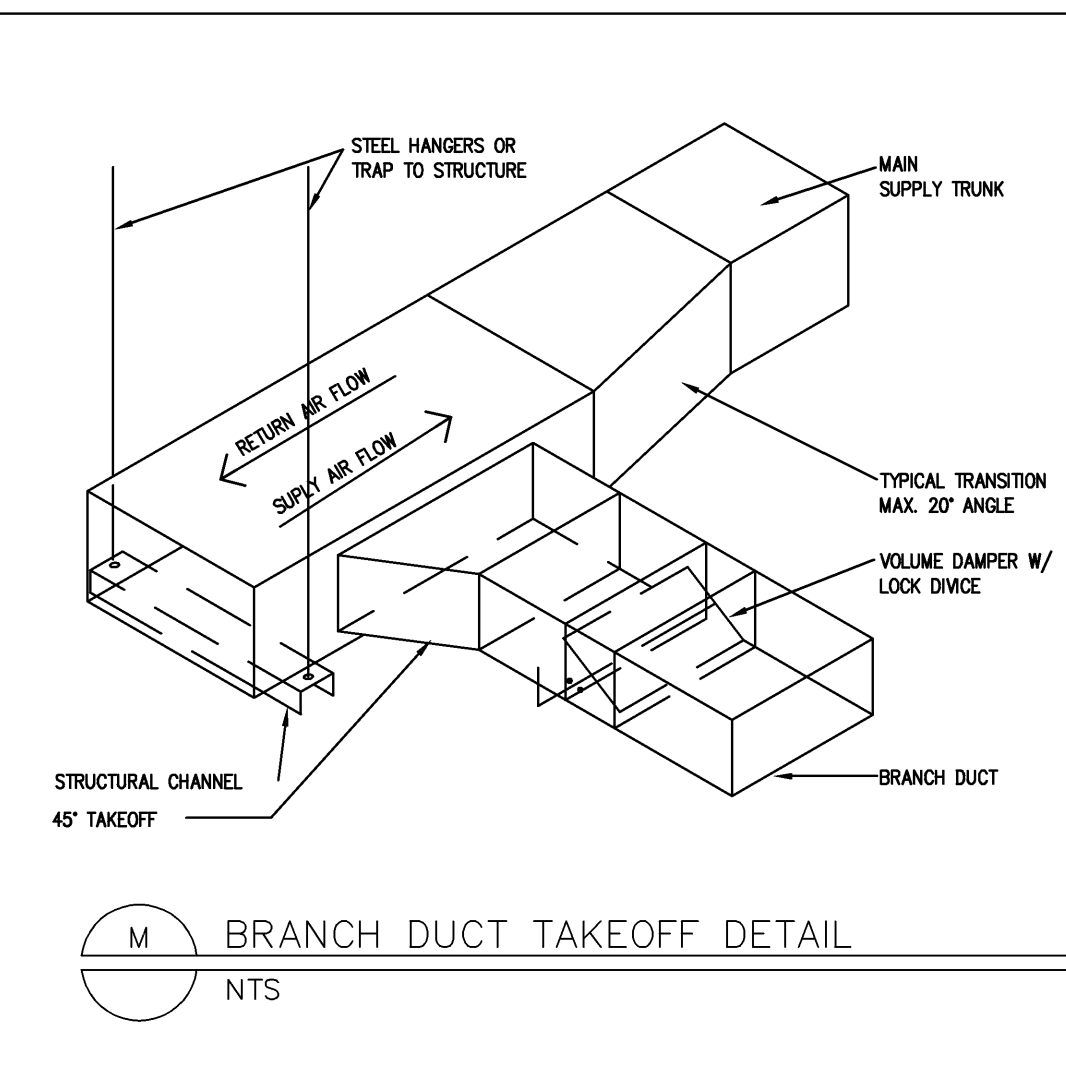
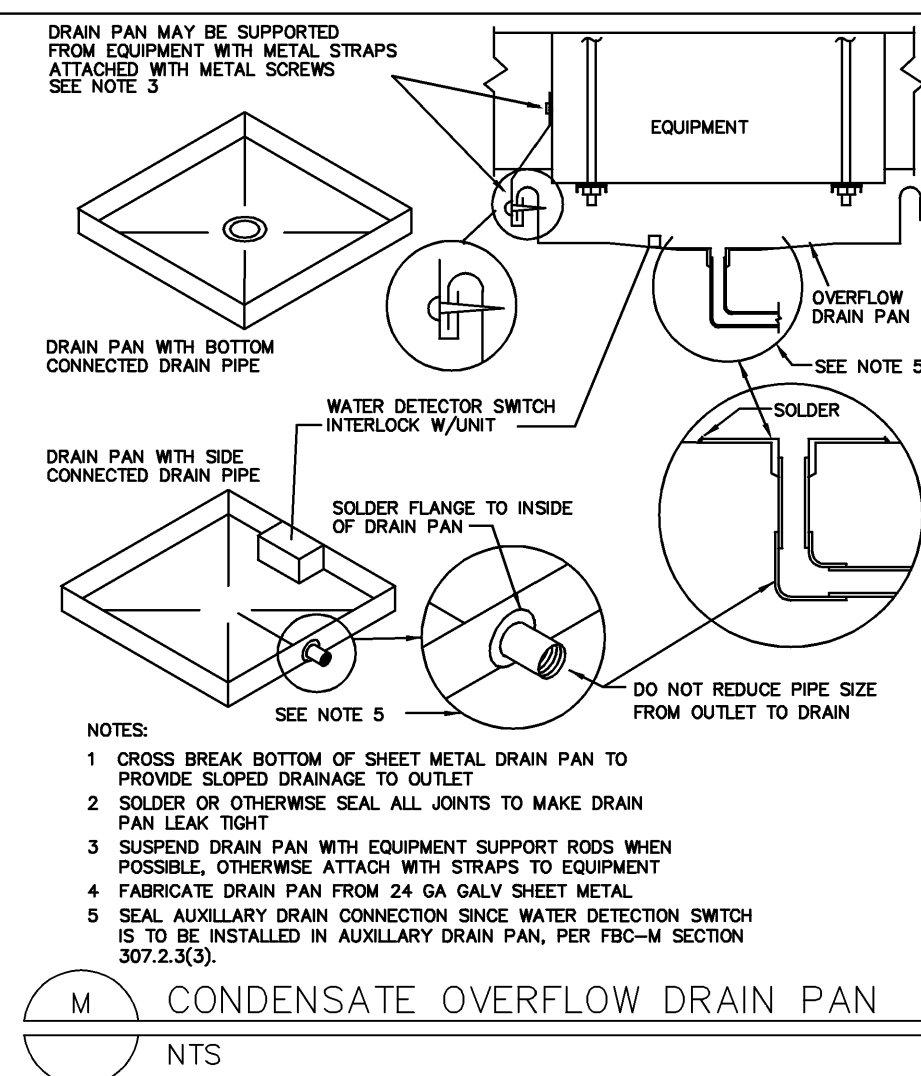
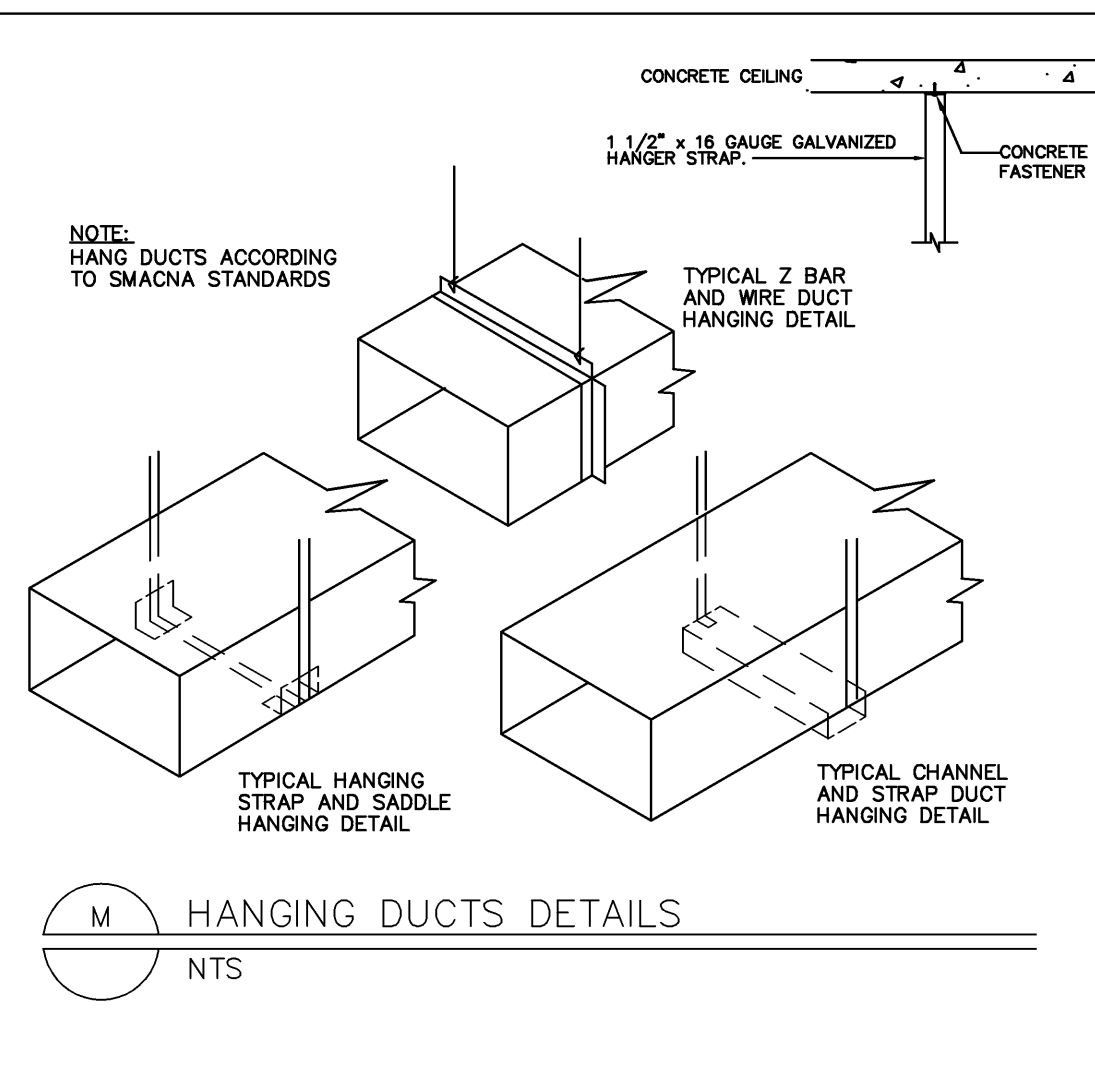
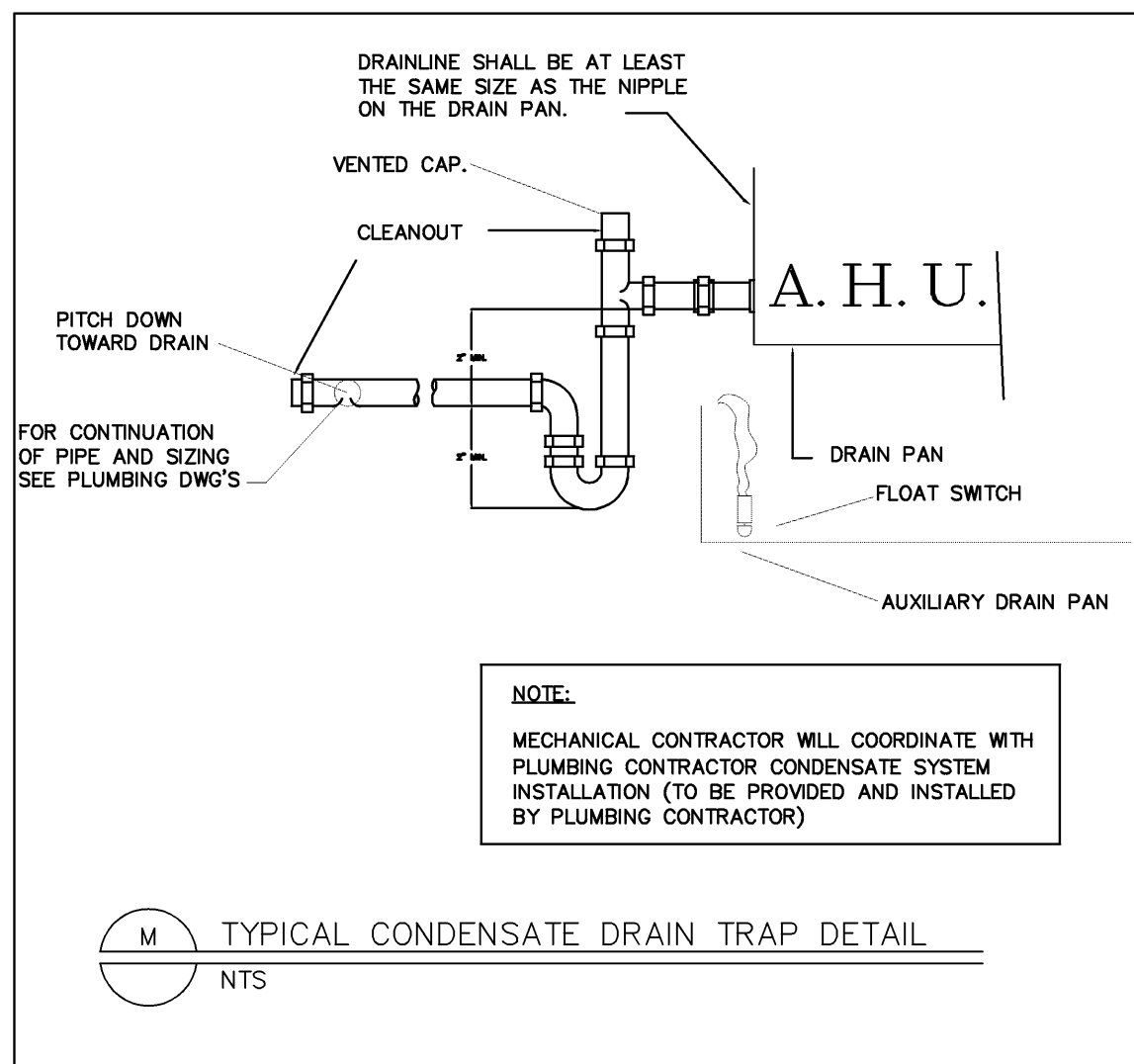
SEAL:



SHEET

**M.3**

OF: 3









743 BISCAYNE DRIVE  
WEST PALM BEACH, FLORIDA 33401  
561.659.5683

STEPHEN MICHAEL ROY AIA, NCARB  
FLORIDA REGISTERED ARCHITECT  
AR91404

PROJECT:  
**TENANT IMPROVEMENT  
MODIFICATIONS  
TO**

150 WORTH AVENUE UNIT 235  
PALM BEACH  
FLORIDA 33480

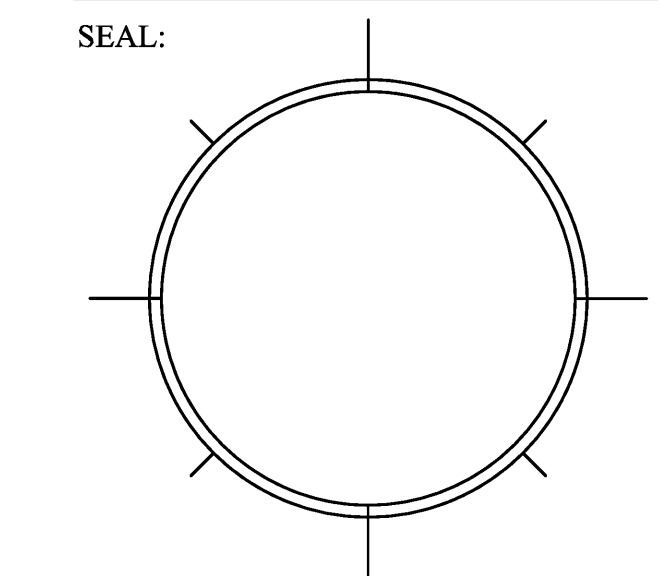
TITLE  
**SITE PLAN**

DRAWING INFO	
DATE	9-9-11
SCALE	VARIABLE
DESIGNED BY	MESA
DRAWN BY	MESA
PROJECT #	111608

REVISIONS AND ISSUE

NO.	DATE	ISSUE NOTE

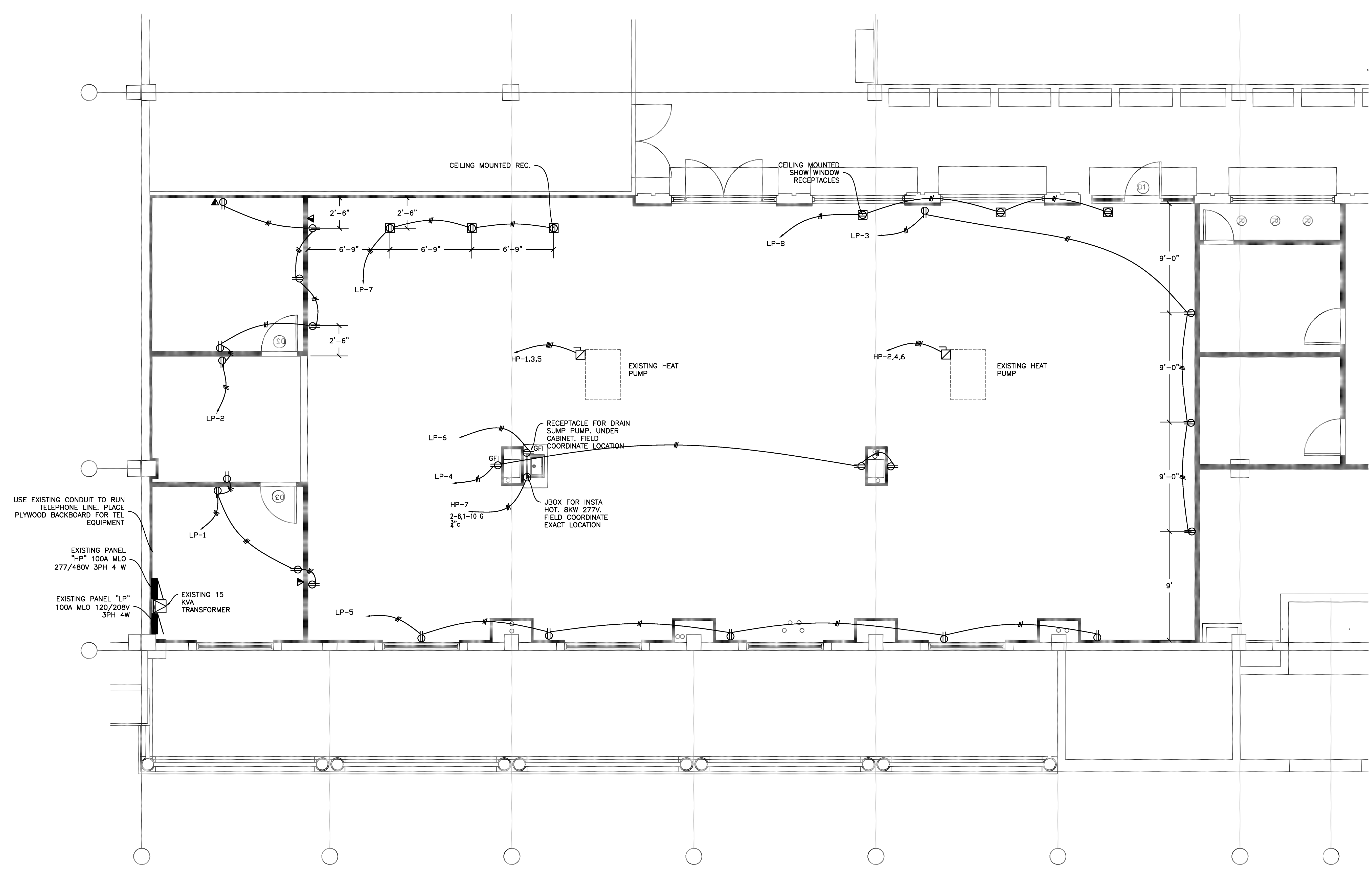
OWNERSHIP AND USE OF THESE DOCUMENTS & SPECIFICATIONS AS INSTRUMENTS OF SERVICE ARE AND SHALL REMAIN THE PROPERTY OF THE ARCHITECT WHETHER THE PROJECT THEY ARE MADE FOR IS EXECUTED OR NOT. THEY SHALL NOT BE USED BY THE OWNER OR OTHERS ON OTHER PROJECTS OR FOR ADDITIONS ON OTHER PROJECTS BY OTHERS, EXCEPT BY AGREEMENT IN WRITING WITH ARCHITECT



SHEET

**E-1**

OF:



**POWER PLAN**  
SCALE 1/4" = 1'-0"

**CAUTION!!**  
NOT FOR CONSTRUCTION  
THESE DRAWINGS ARE PRELIMINARY AND ARE PROVIDED FOR MONITORING PROGRESS AND FOR OBTAINING BUDGETARY CONSTRUCTION ESTIMATES. THEY SHALL NOT BE USED FOR CONSTRUCTION

**E&C Engineers**  
Cert. of Auth # 26558  
2755 Vista Parkway Suite 1-3  
West Palm Beach, FL 33411  
Tel (561) 712 1149  
email: ed@ecengineers.com

Eduardo (Ed) Samour, P.E.  
Registered Electrical Engineer  
P.E. # 41186  
Date: \_\_\_\_\_



743 BISCAYNE DRIVE  
WEST PALM BEACH, FLORIDA 33401  
561.659.5683

STEPHEN MICHAEL ROY AIA, NCARB  
FLORIDA REGISTERED ARCHITECT  
AR91404

PROJECT:

**TENANT IMPROVEMENT  
MODIFICATIONS  
TO**

150 WORTH AVENUE UNIT 235  
PALM BEACH  
FLORIDA 33480

TITLE  
**SITE PLAN**

DRAWING INFO

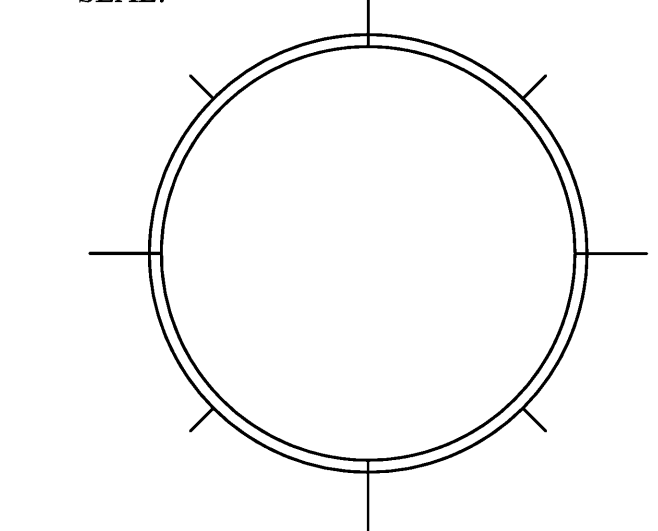
DATE	9-9-11
SCALE	VARIABLES
DESIGNED BY	MESA
DRAWN BY	MESA
PROJECT #	111608

REVISIONS AND ISSUE

NO.	DATE	ISSUE NOTE

OWNERSHIP AND USE OF THESE DOCUMENTS & SPECIFICATIONS AS INSTRUMENTS OF SERVICE ARE AND SHALL REMAIN THE PROPERTY OF THE ARCHITECT WHETHER THE PROJECT THEY ARE MADE FOR IS EXECUTED OR NOT. THEY SHALL NOT BE USED BY THE OWNER OR OTHERS ON OTHER PROJECTS OR FOR ADDITIONS ON OTHER PROJECTS BY OTHERS, EXCEPT BY AGREEMENT IN WRITING WITH ARCHITECT

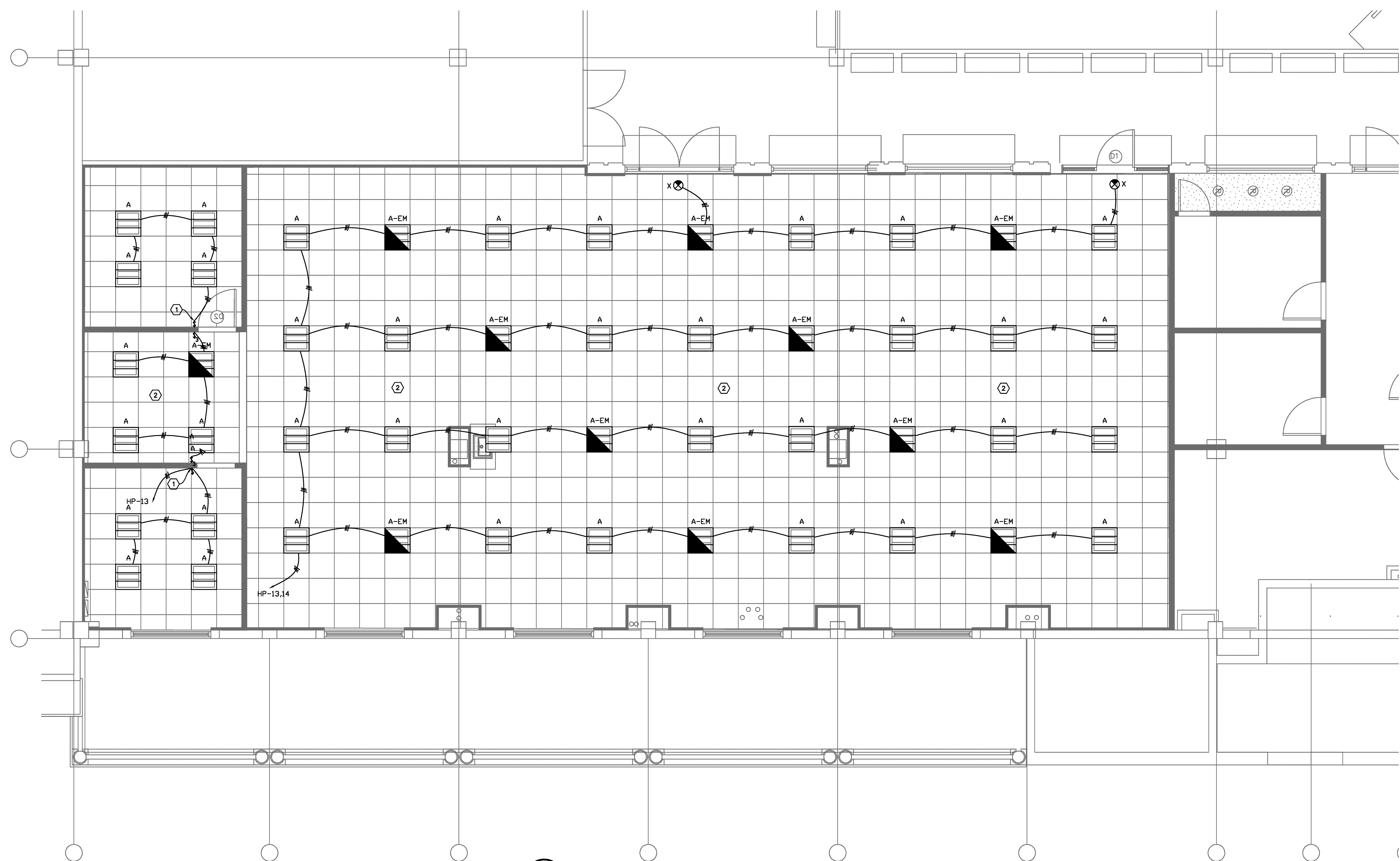
SEAL:



SHEET

**E-2**

OF:



**LIGHTING PLAN**  
SCALE 1/4" = 1'-0"

**KEY NOTES**

①	INSTALL OCCUPANCY SENSOR WITH WALL SWITCH DUAL TECHNOLOGY, WITH A BUILT IN TIMER TO TURN LIGHTS OFF 30 MIN. AFTER OCCUPANT LEAVES THE ROOM.
②	INSTALL CEILING MOUNTED OCCUPANCY SENSOR DUAL TECHNOLOGY, WITH BUILT IN TIMER TO TURN LIGHTS OFF 30MIN. AFTER OCCUPANT LEAVES THE ROOM.

**LIGHTING FIXTURE SCHEDULE**

TYPE	CAT #
A	DAY-BRITE "ARISO" RECESSED CAT 2AVG228-PMW-120-EB
A-EM	SIMILAR TO A BUT WITH EMERGENCY BATTERY PACK
X	EXIT SIGN WITH BATTERY BACK UP McPHILBEN Cat # 45VL1GC.

**LIGHTING ALLOWANCE**

	AREA SQFT	LIGHTING ALLOWED	TOTAL ALLOWED	TOTAL INSTALLED
OFFICE	477	1.1	524.7	768
SALES AREA	2670	1.7	4539	2304
			5063.7	3072

**CAUTION!!**  
**NOT FOR CONSTRUCTION**

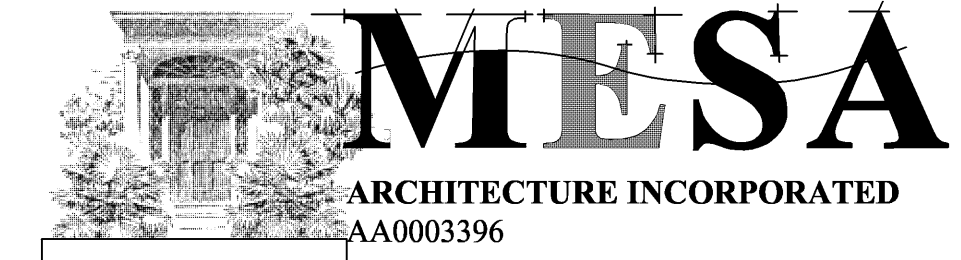
THESE DRAWINGS ARE PRELIMINARY AND ARE PROVIDED FOR MONITORING PROGRESS AND FOR OBTAINING BUDGETARY CONSTRUCTION ESTIMATES. THEY SHALL NOT BE USED FOR CONSTRUCTION



**NOTE TO CONTRACTOR**

ALL EXIT AND EMERGENCY LIGHTS ARE TO BE CONNECTED AHEAD OF ANY SWITCH, LIGHTING CONTACTOR OR OCCUPANCY SENSOR

Eduardo (Ed) Samour, P.E.  
Registered Electrical Engineer  
P.E. # 41186



ARCHITECTURE INCORPORATED  
AA0003396

743 BISCAYNE DRIVE  
WEST PALM BEACH, FLORIDA 33401  
561.659.5683

STEPHEN MICHAEL ROY AIA, NCARB  
FLORIDA REGISTERED ARCHITECT  
AR91404

PROJECT:

TENANT IMPROVEMENT  
MODIFICATIONS  
TO

150 WORTH AVENUE UNIT 235  
PALM BEACH  
FLORIDA 33480

TITLE  
PLUMBING  
PLAN

DRAWING INFO

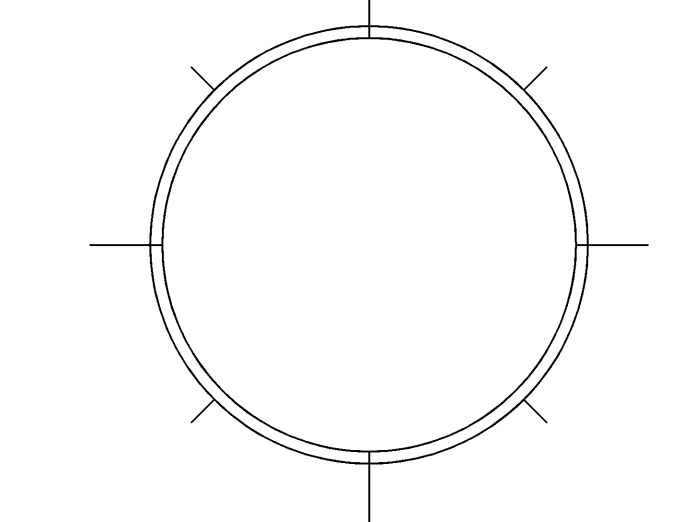
DATE	9-9-11
SCALE	VARIES
DESIGNED BY	MESA
DRAWN BY	MESA
PROJECT #	111608

REVISIONS AND ISSUE

NO.	DATE	ISSUE NOTE
NO.	DATE	REVISION NOTE

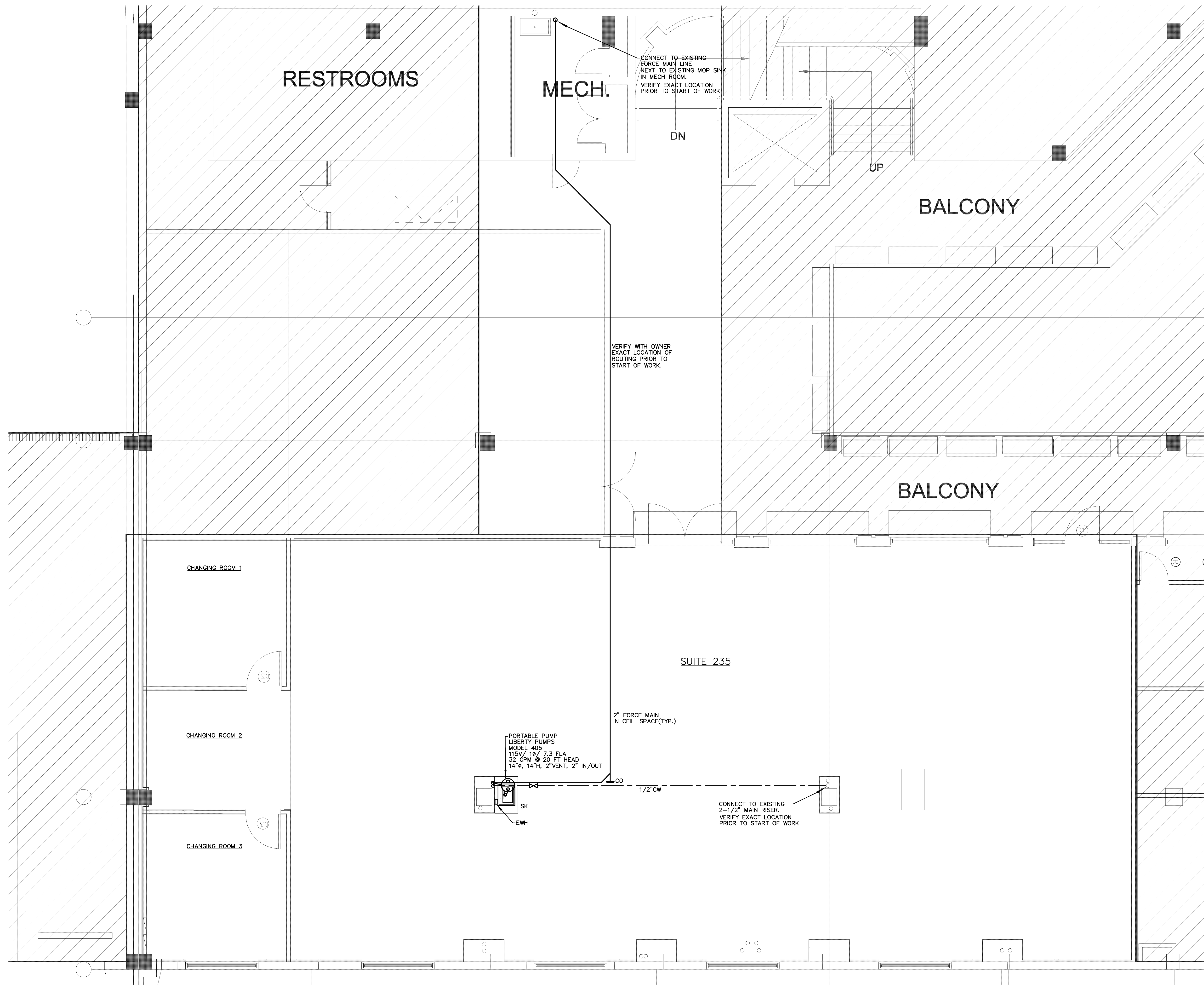
OWNERSHIP AND USE OF THESE DOCUMENTS & SPECIFICATIONS AS INSTRUMENTS OF SERVICE ARE AND SHALL REMAIN THE PROPERTY OF THE ARCHITECT WHETHER THE PROJECT THEY ARE MADE FOR IS EXECUTED OR NOT. THEY SHALL NOT BE USED BY THE OWNER OR OTHERS ON OTHER PROJECTS OR FOR ADDITIONS ON OTHER PROJECTS BY OTHERS, EXCEPT BY AGREEMENT IN WRITING WITH ARCHITECT

SEAL:



SHEET

P.1



MICHAEL A. BASSFORD  
1462 N.E. 34TH COURT  
OAKLAND PARK, FL 33534  
PHONE: (864) 296-0700  
EMAIL: mbassford@aol.com  
MICHAEL A. BASSFORD  
FLORIDA LICENSE #57390

PLUMBING PLAN  
SCALE: 1/4"=1'-0"

OF: 2

PROJECT:

TENANT IMPROVEMENT  
MODIFICATIONS  
TO

150 WORTH AVENUE UNIT 235  
PALM BEACH  
FLORIDA 33480

TITLE  
PLUMBING  
NOTES & DETAILS

DRAWING INFO

DATE 9-9-11

SCALE VARIES

DESIGNED BY MESA

DRAWN BY MESA

PROJECT # 111608

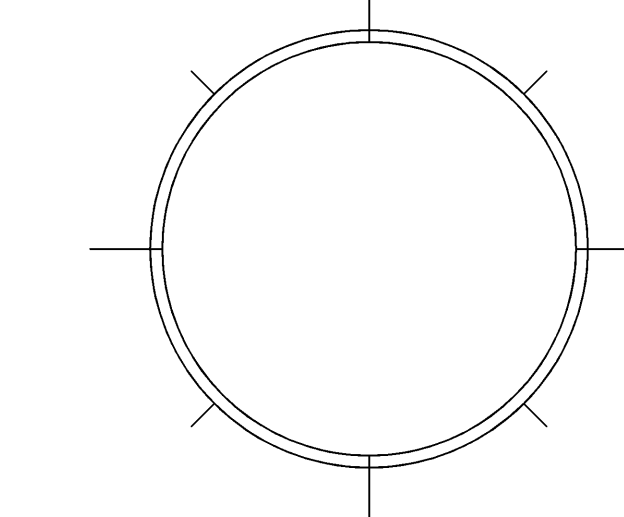
REVISIONS AND ISSUE

NO.	DATE	ISSUE NOTE

NO.	DATE	REVISION NOTE

OWNERSHIP AND USE OF THESE DOCUMENTS & SPECIFICATIONS AS INSTRUMENTS OF SERVICE ARE AND SHALL REMAIN THE PROPERTY OF THE ARCHITECT WHETHER THE PROJECT THEY ARE MADE FOR IS EXECUTED OR NOT. THEY SHALL NOT BE USED BY THE OWNER OR OTHERS ON OTHER PROJECTS OR FOR ADDITIONS ON OTHER PROJECTS BY OTHERS, EXCEPT BY AGREEMENT IN WRITING WITH ARCHITECT

SEAL:



SHEET

P.2

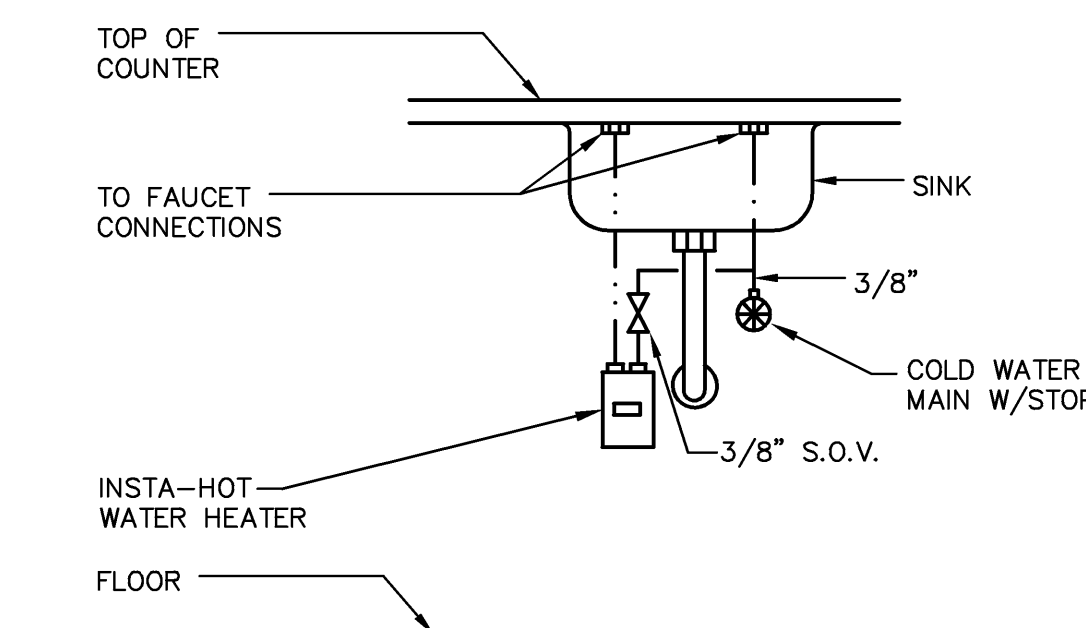
OF: 2

PLUMBING LEGEND			
CO	CLEAN OUT	—	SANITARY SEWER PIPING
S.O.V.	SHUT-OFF VALVE (BALL VALVE)	—	VENT PIPING
COTG	CLEAN OUT TO GRADE	—	DOMESTIC COLD WATER PIPING
CW	DOMESTIC COLD WATER	—	DOMESTIC HOT WATER PIPING
HW	DOMESTIC HOT WATER	—	PIPE RISER
		—	PIPE DOWN
		—	P-TRAP
		—	SHUT-OFF VALVE (BALL VALVE)

- PLUMBING NOTES**
- DO NOT SCALE THE DRAWINGS. CONSULT THE ARCHITECT'S AND STRUCTURAL DRAWINGS FOR DIMENSIONS. REFER TO ARCHITECTURAL PLANS FOR EXACT LOCATIONS AND MOUNTING HEIGHTS OF ALL PLUMBING FIXTURES AND DRAINS. COORDINATE WITH ALL TRADES PRIOR OF ANY FABRICATION AND EQUIPMENT INSTALLATION.
  - CONSULT THE ARCHITECT'S DRAWINGS FOR ALL GRADE AND FINISH FLOOR ELEVATIONS.
  - ALL GRAVITY LINES SIZED TO SLOPE 1/8" PER FOOT FOR PIPES 3" AND LARGER. 1/4" PER FOOT SLOPE FOR PIPES 2-1/2" AND SMALLER.
  - ALL PLUMBING WORK SHALL COMPLY WITH THE 2007 PLUMBING CODE, AS LOCALLY AMENDED.
  - CLEANOUTS SHALL BE INSTALLED AS INDICATED ON THE DRAWINGS AND AS REQUIRED BY THE PLUMBING CODE.
  - POTABLE HOT AND COLD WATER PIPING SHALL BE TYPE "L" COPPER WITH FORGED OR WROUGHT SOLDER FITTINGS. WHERE PIPING RUNS OR UNDER SLAB, ENCLOSE IN POLYETHYLENE PIPE SLEEVE WITH NO JOINTS IN THE COPPER PIPE. UNDERGROUND PIPING SHALL BE COPPER TYPE "K".
  - SANITARY WASTE, STORM DRAIN & VENT PIPING SHALL BE SCHEDULE 40 PVC BELOW GRADE. SCHEDULE 40 PVC SHALL BE USED ABOVE GRADE AS LONG AS IT IS NOT IN PLENUM SPACE. USE HUBLESS CAST-IRON IN PLENUM SPACE.
  - THE CONTRACTOR SHALL ARRANGE AND PAY FOR ALL PERMITS, INSPECTIONS AND REINSPECTIONS REQUIRED.
  - CONTRACTOR SHALL VISIT THE EXISTING SITE PRIOR TO BIDDING AND SHALL INVESTIGATE ALL CONDITIONS THAT AFFECT HIS WORK; VERIFY LOCATIONS, SIZES, DIMENSIONS, AND INVERT ELEVATIONS OF ALL ON-SITE SANITARY SEWERS, WATER MAINS AND MAKE CERTAIN THAT ALL CONNECTIONS CAN BE MADE. THE CONTRACTOR SHALL MAKE THE ARCHITECT/ENGINEER AWARE OF ANY CONFLICTS.

**SCOPE OF WORK**

TO PROVIDE NEW SINK AND NECESSARY PLUMBING CONNECTIONS TO IT.



**SINGLE SINK TANKLESS HEATER DETAIL**

N.T.S.

TANKLESS WATER HEATER SCHEDULE						
DESIGNATION	MFG.	MODEL No.	V-Ø-Hz-KW	AMPS	DIMENSIONS	PIPE FITTING
EWH	EEMAX	SP80	277-1-60-8.0	29	10.75"x5.25"x2.88"	3/8" COMP. ● TOP

**PLUMBING FIXTURE PIPE SIZES**

FIXTURE	ITEM	WASTE	TRAP	CW	HW	FBC-P TABLE 604.4 MAX. WATER FLOW RATE
SK	SINK (HANDICAPPED)	2"	1-1/2"	1/2"	1/2"	2.5 GPM

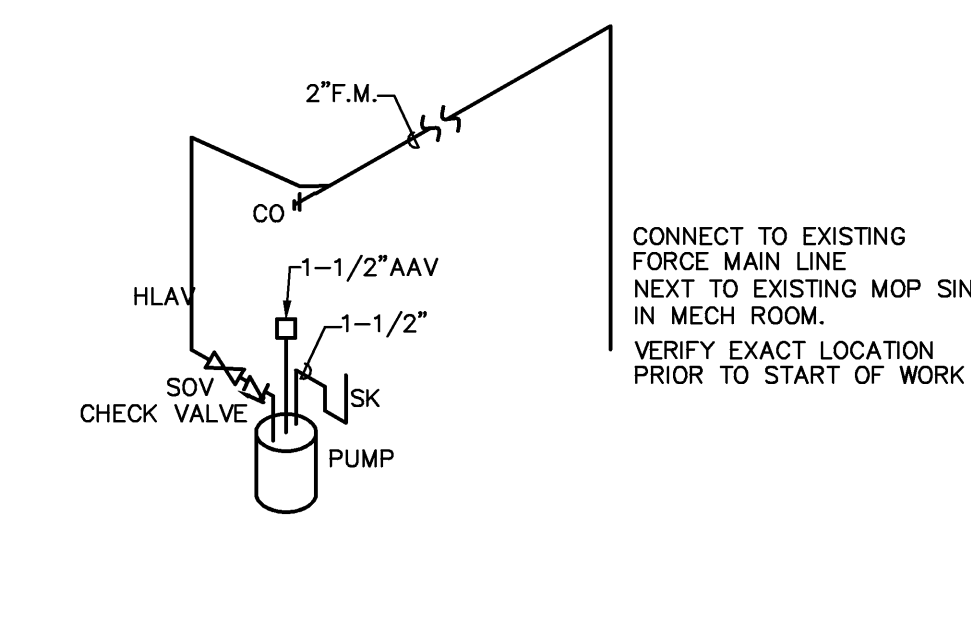
**PLUMBING FIXTURE LIST**

AMERICAN STANDARD, ELKAY & ZURN PRODUCTS ARE LISTED. SUBMIT ALTERNATE FIXTURES FOR APPROVAL. COLOR IS WHITE UNLESS OTHERWISE NOTED. ALL FIXTURES SHALL COMPLY WITH TABLE 604.4 OF F.B.C.-PLUMBING PROVIDE FIXTURES WITH REQUIRED STOP VALVES, FITTINGS, ACCESSORIES, SUPPORTS, ETC. AS REQUIRED FOR A COMPLETE FUNCTIONAL PLUMBING SYSTEM.

TAG	MFG.	MODEL	REMARKS
SK	ELKAY	LR2522 LK4102F	SINGLE BOWL 25"x22", 3 FAUCET HOLES, SINGLE LEVER FAUCET, ADA COMPLIANT, LK35B STRAINER W/ 1-1/2" S.S. TAILPIECE.

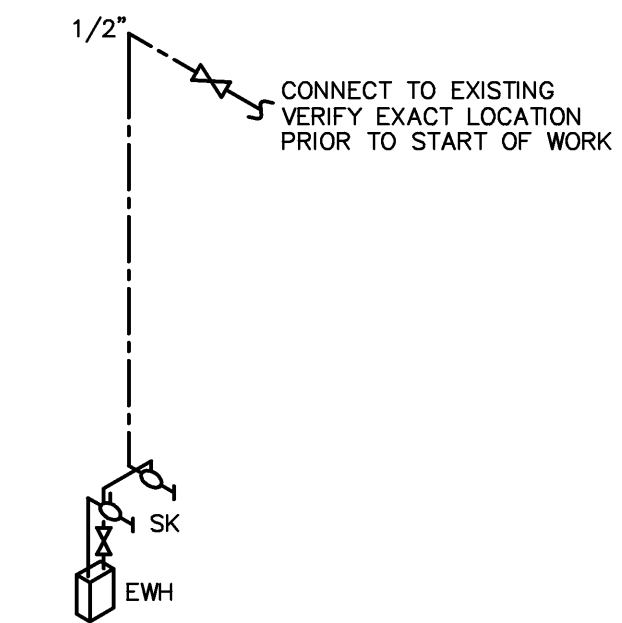
**SANITARY WASTE RISER DIAGRAM**

N.T.S.



**DOMESTIC WATER RISER DIAGRAM**

N.T.S.



MICHAEL A. BASSFORD  
1468 N.E. 34TH COURT  
OAKLAND PARK, FL 33534  
PHONE: (864) 296-0700  
EMAIL: mbassford@aol.com  
MICHAEL A. BASSFORD  
FLORIDA LICENSE #57390