

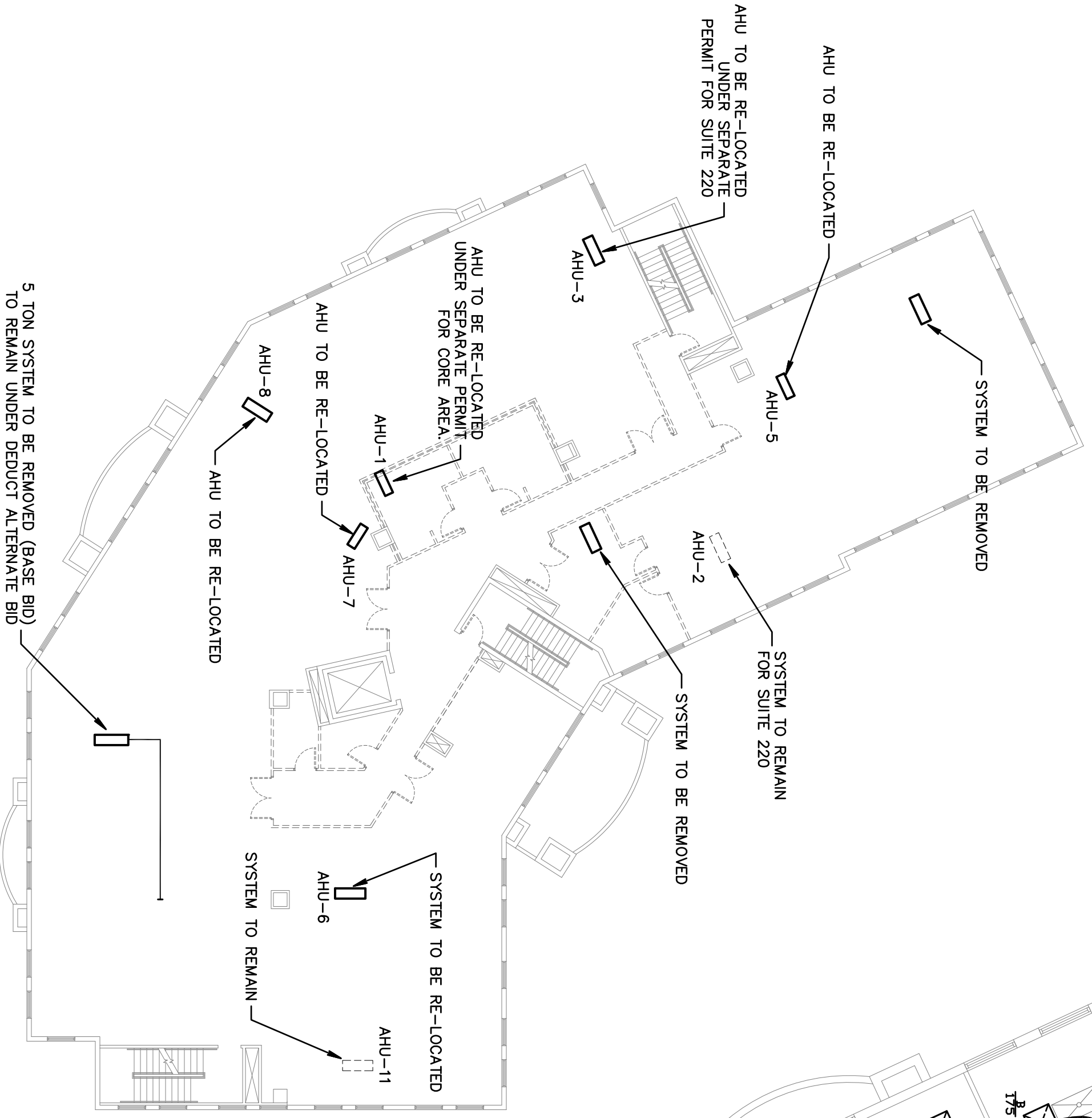
ALL CEILING SPACES IN THESE SUITES ARE PROPOSED AS RETURN AIR PLENUMS. NO COMBUSTIBLE OR TOXIC MATERIALS ARE TO BE ALLOWED IN THE CEILING PLENUM.

THE CONTRACTOR IS TO INSPECT, TEST AND VERIFY SATISFACTORY OPERATION OF EXISTING AIR CONDITIONING UNITS WHICH ARE PROPOSED FOR RE-USE PRIOR TO ANY OTHER WORK. REPORT ANY NON-OPERATIONAL OR DEFICIENT EQUIPMENT TO THE LANDLORD. DO NOT REMOVE OR DISCONNECT ANY EQUIPMENT WITHOUT LANDLORDS APPROVAL. TO TESTING OR WITHOUT LANDLORDS APPROVAL.

ALL EXISTING HVAC EQUIPMENT IN THE AREA OF WORK, WHICH IS NOT SHOWN TO REMAIN OR BE RE-LOCATED, IS TO BE REMOVED. ALL EXISTING DUCTWORK IS TO BE REMOVED EXCEPT WHERE SPECIFICALLY NOTED OTHERWISE.

**ALTERNATE BID NOTES:**

PROVIDE A SEPARATE ADD ALTERNATE PRICE TO REPLACE EACH EXISTING SPLIT SYSTEM INSTEAD OF RE-USING EXISTING EQUIPMENT AS SHOWN. NEW EQUIPMENT IS TO BE INSTALLED UNDER THE EQUIPMENT SCHEDULE UNDER THESE ALTERNATES.  
 PROVIDE A DEDUCT ALTERNATE PRICE TO RE-USE THE EXISTING 5 TON SPLIT SYSTEM FOR SUITE 205 IN PLACE OF PROVIDING NEW EQUIPMENT. SUITE 205 AND AHU-10/5 TON UNIT IS TO BE MODIFIED AS REQUIRED UNDER THIS ALTERNATE. WITH A 10" OUTSIDE AIR DUCT PROVIDED.



EXISTING HVAC FLOOR PLAN

SCALE: 1/16" = 1'-0"



PROPOSED HVAC FLOOR PLAN

SCALE: 1/8" = 1'-0"

ABBREVIATIONS	
AHU	AIR HANDLING UNIT
CU	CONDENSING UNIT
S/A	SUPPLY AIR
R/A	RETURN AIR
O/A	OUTSIDE AIR
E/A	EXHAUST AIR
CFM	CUBIC FEET PER MINUTE.
M/D	MANUAL VOLUME DAMPER (OPPOSED BLADE TYPE)
CD	CONDENSATE DRAIN

SYMBOL LEGEND	
[Symbol]	EQUIPMENT AS NOTED
[Symbol]	SUPPLY AIR DIFFUSER AS NOTED
[Symbol]	RETURN/TRANSFER GRILLE AS NOTED
[Symbol]	DUCTWORK AS NOTED
[Symbol]	FLEXIBLE DUCT TAKE-OFF WITH VOLUME DAMPER
[Symbol]	FLEXIBLE DUCT, UL CLASS 1
[Symbol]	GRANITE BACKDRIFT DAMPER
[Symbol]	GREENHECK VDR633 MOTORIZED BACKDRIFT & BALANCING DAMPER
[Symbol]	MANUAL VOLUME DAMPER
[Symbol]	THERMOSTAT AS NOTED
[Symbol]	DUCT SMOKE DETECTOR
[Symbol]	REMOTE TEST SWITCH WITH AUDIBLE & VISUAL ALARMS
[Symbol]	CONNECTION TO EXISTING EQUIPMENT
[Symbol]	AIR DEVICE TYPE / CFM

- DRAWING KEYNOTES:**
- EXISTING AIR HANDLING UNIT TO BE RE-LOCATED AS SHOWN. EXTEND EXISTING REFRIGERANT PIPING AS REQUIRED.
  - PROPOSED NEW AIR HANDLING UNIT.
  - EXISTING AIR HANDLING UNIT TO REMAIN IN PLACE.

Gilman & Associates, Inc.  
 MECHANICAL & ELECTRICAL ENGINEERS  
 587 NORTH LAKESIDE DRIVE  
 Lake Worth, FL 33460 C.A.#009078  
 (561) 582-0210 Fax (561) 582-8212  
 RONALD D. GILMAN P.E. #37933

**birse design inc.**  
 5300 woodland lakes drive  
 palm beach gardens, fl 33418  
 phone 561-249-4001  
 fax 772-409-8684  
 AA26001615

**2ND FLOOR SPEC SUITES**

GRAND BANK CENTER  
 3601 PGA BLVD  
 PALM BEACH GARDENS, FL  
 PROJECT NUMBER GBC08

REVISIONS
1
2
3
4
5

DRAWN BY GDR  
 CD  
 12/17/12

