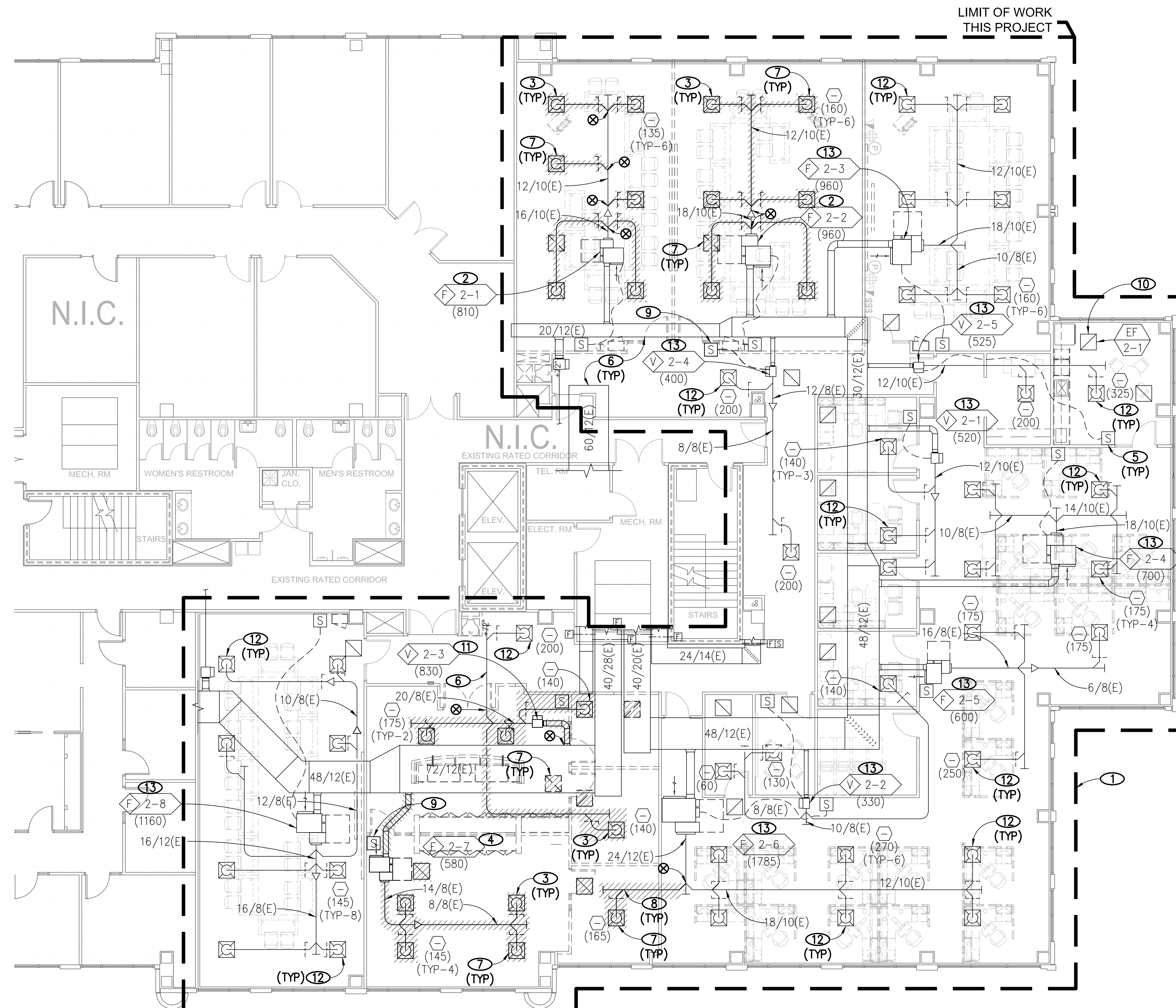


# NOTICE

- EQUIPMENT, DUCTWORK, AND PIPING LOCATIONS SHOWN FROM BEST AVAILABLE INFORMATION. CONTRACTOR SHALL FIELD VERIFY SIZE AND LOCATIONS PRIOR TO START OF WORK. IF SYSTEMS ARE NOT AS SHOWN IN DRAWINGS, REPORT DEVIATIONS TO ARCHITECT/ENGINEER WITHIN 48 HOURS OF DISCOVERY.
- THE OWNER OR TENANT RESERVES FIRST CHOICE TO KEEP EXISTING EQUIPMENT AND MATERIALS PER LEASE AGREEMENT. COORDINATE WITH OWNER/TENANT AND DELIVER DESIGNATED EQUIPMENT AND MATERIALS REMOVED UNDER THIS CONTRACT TO SPECIFIED STORAGE AREA. REMAINING EQUIPMENT AND MATERIAL REMOVED SHALL BECOME PROPERTY OF THE CONTRACTOR.
- WHERE DUCTWORK OR PIPING IS TO BE REMOVED TO A POINT, IT SHALL BE CAPPED OFF AND PROTECTED (WHERE APPLICABLE) FOR CONNECTION TO NEW WORK. INSULATION ON EXISTING DUCTWORK AND PIPING SHALL BE REPAIRED OR REPLACED EQUAL TO NEW CONDITION.
- DUCTWORK AND PIPING CONNECTING TO REMOVED EQUIPMENT SHALL BE REMOVED TO A POINT SO AS NOT TO INTERFERE WITH NEW CONSTRUCTION.
- THE CONTRACTOR SHALL BE RESPONSIBLE FOR THE REPAIR AND PATCHING OF DAMAGED ARCHITECTURAL COMPONENTS TO REMAIN DURING THE REMOVAL OF DESIGNATED SYSTEMS. COORDINATE REPAIR REQUIREMENTS WITH ARCHITECT AND GENERAL CONTRACTOR.
- EXISTING DUCTWORK, PIPING, AND EQUIPMENT TO REMAIN IS SHOWN LIGHT. EXISTING DUCTWORK, PIPING, AND EQUIPMENT TO BE REMOVED IS SHOWN CROSSHATCHED.

# NOTES

- LOCATION OF TENANT IMPROVEMENT. MECHANICAL WORK MAY EXCEED THIS AREA AS REQUIRED FOR COMPLETE SYSTEM INSTALLATION.
- EXISTING TO REMAIN TERMINAL UNIT. VERIFY AIR FLOW QUANTITY AT TERMINAL UNIT AND EACH EXISTING DIFFUSER SERVED PRIOR TO ALTERATION. NOTIFY ARCHITECT / ENGINEER OF ANY DISCREPANCIES.
- VERIFY AIR FLOW QUANTITY INDICATED FOR ALL EXISTING DIFFUSERS PRIOR TO DEMOLITION. NOTIFY ARCHITECT / ENGINEER OF ANY DISCREPANCIES.
- RELOCATE TERMINAL UNIT AND ASSOCIATED SENSOR. VERIFY AIR FLOW QUANTITY AT TERMINAL UNIT PRIOR TO DEMOLITION. NOTIFY ARCHITECT / ENGINEER OF ANY DISCREPANCIES. REFER TO SHEET M2.2 FOR NEW LOCATION. REMOVE ALL ASSOCIATED DUCTWORK AND DUCT ACCESSORIES. CAP BRANCH AND SEAL AIRTIGHT AT TAKEOFF FROM MAIN.
- EXISTING TO REMAIN SPACE SENSOR; TYPICAL UNLESS OTHERWISE NOTED.
- EXISTING TO REMAIN DUCTWORK.
- REMOVE EXISTING DIFFUSER / GRILLE.
- REMOVE EXISTING DUCTWORK AND ASSOCIATED DUCT ACCESSORIES (DAMPERS, ETC) TO POINT INDICATED. CAP BRANCH DUCT AND SEAL AIRTIGHT.
- RELOCATE SPACE SENSOR AND ASSOCIATED CONTROL WIRING.
- EXISTING TO REMAIN EXHAUST FAN.
- REMOVE EXISTING TERMINAL UNIT AND RE-USE SENSOR. TURN OVER TO OWNER'S STORAGE. REMOVE ALL ASSOCIATED DUCTWORK AND DUCT ACCESSORIES. CAP BRANCH AND SEAL AIRTIGHT AT TAKEOFF FROM MAIN.
- EXISTING TO REMAIN DIFFUSER/GRILLE.
- EXISTING TO REMAIN TERMINAL UNIT.



MECHANICAL DEMOLITION FLOOR PLAN - LEVEL TWO  
SCALE: 1/8"=1'-0"

**PRE-DEMOLITION AIR BALANCE**  
PRIOR TO DEMOLITION, COMPLETE NOTES 2, 3, & 4 ON THIS DRAWING.

**TERMINAL UNIT LEGEND**

	UNIT TYPE (F DENOTES FAN POWERED BOX, V DENOTES SHUT-OFF TYPE SINGLE DUCT BOX)
	IDENTITY TAG (FLOOR NUMBER-BOX NUMBER)
	AIR QUANTITY (CFM)

JBA Las Vegas  
5155 W Patrick Ln  
Las Vegas, NV 89116  
p 702.362.9200

**DRAWING ISSUE LOG**

NO.	DESCRIPTION	DATE	BY	CHKD BY
A	CONSTRUCTION DOCUMENT REVIEW			
B	REVISED			
C	REVISED			

**CARPENTER SELLERS DEL GRITTO**  
ARCHITECTS  
1919 S. JONES SUITE C - LAS VEGAS, NV 89146  
(702) 251-8896 - FAX (702) 251-8870

**MECHANICAL DEMOLITION FLOOR PLAN - LEVEL TWO**  
A COMMERCIAL TENANT IMPROVEMENT FOR  
**UNIVERSITY OF PHOENIX - WEST PALM BEACH, FL**  
7111 FAIRWAY DRIVE  
PALM BEACH GARDENS, FL 33418  
**(REMODEL)**

**REVISIONS:**

NO.	DESCRIPTION	DATE

DATE: 08-08-2011  
JOB NO: U11-029  
FILE NAME: 110413\_M1-2.DWG  
DO NOT SCALE DRAWINGS

SHEET NO:  
**M1.2**

P:\11\_0413\Drawings\BAM\M10413\_M1-2.dwg, 8/18/2011 9:21:59 AM, gbbw