

ELECTRICAL LEGEND

- LIGHTING FIXTURE IDENTIFICATION
- ◻ RECTANGULAR LIGHTING FIXTURE - AS NOTED
  - ◼ RECTANGULAR LIGHTING FIXTURE WITH EMERGENCY BATTERY BACKUP
  - ROUND LIGHTING FIXTURE
  - ⦿ EXIT LIGHT WITH EMERGENCY POWER BATTERY BACKUP
  - ⦿ EMERGENCY LIGHTING FIXTURE WITH BATTERY BACKUP
  - ⦿ DUPLEX RECEPT - 20 AMP (18" A.F.F.)
  - ⦿ SINGLE RECEPT - 20 AMP (18" A.F.F.)
  - ⦿ DUPLEX RECEPT ABOVE COUNTER - 20 AMP (44" A.F.F.)
  - ⦿ DUPLEX RECEPT FLUSH FLOOR MOUNTED - 20 AMP
  - ⦿ SPECIAL PURPOSE RECEPT (18" A.F.F. - MATCH EQUIPMENT PROVIDED)
  - ⦿ QUAD-PLEX RECEPT - 20 AMP (18" A.F.F.)

- \$ SINGLE POLE TOGGLE SWITCH, 48" AFF
- \$ 3-WAY TOGGLE SWITCH, 48" AFF
- \$ SLIDE TYPE DIMMER SWITCH, VARIAGE AS REQUIRED, 48" AFF
- ⌋ JUNCTION BOXES
- ⌋ FUSIBLE DISCONNECT (SWITCH POLES, AMPS/FUSES AS SHOWN)
- \$ MOTOR RATED SWITCH (WITH OVERLOADS)
- ⦿ ELECTRICAL PANELBOARD
- ⦿ MOTOR LOAD
- ⦿ CIRCUIT HOME RUN TO PANELBOARD OR OTHER DEVICE AS INDICATED
- ⦿ CONDUIT CONCEALED
- ⦿ EXISTING CIRCUIT AS NOTED

- CAPPED CONDUIT
- TV TELEVISION OUTLET (18" A.F.F.)
- ▼ TELEPHONE/DATA OUTLET (18" A.F.F.)
- ▼ TEL/DATA OUTLET FLUSH FLOOR MOUNTED
- ⦿ EXISTING DUPLEX RECEPTACLE TO REMAIN
- ▼ EXISTING TELEPHONE/DATA OUTLET BOX TO REMAIN
- E EXISTING DEVICE TO REMAIN, UNLESS NOTED OTHERWISE
- R EXISTING DEVICE, RELOCATED AS SHOWN
- D DEDICATED OUTLET

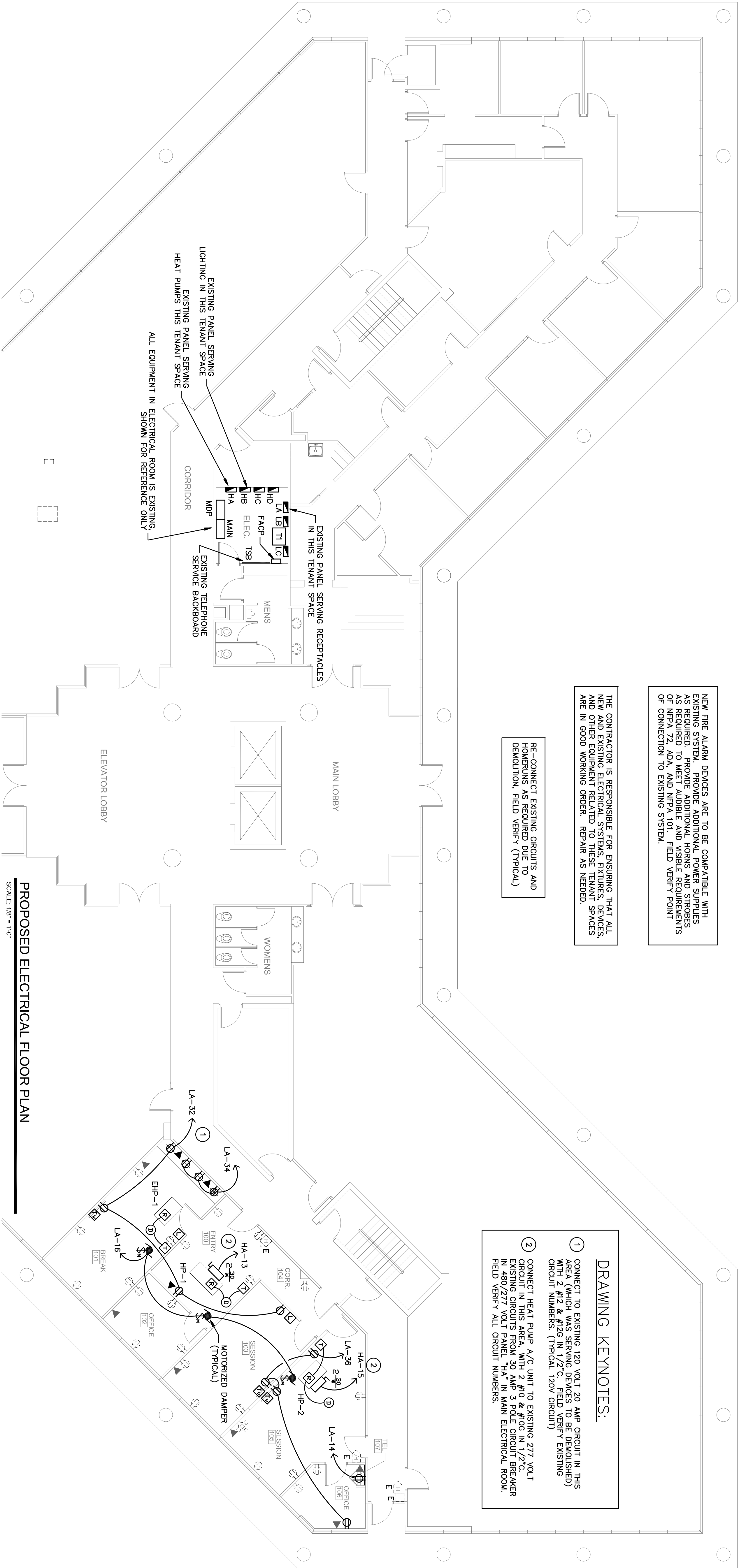
FIRE ALARM LEGEND

- F MANUAL PULL STATION 48" AFF
  - H WALL MOUNT HORN/STROBE 80" AFF TO BOTTOM
  - L ADA COMPLIANT STROBE LIGHT 80" AFF TO BOTTOM
  - D DUCT SMOKE DETECTOR W/O RELAY
  - R CONTROL MODULE OUTPUT RELAY
  - T REMOTE TEST & INDICATOR SWITCH FOR DUCT SMOKE DETECTOR
  - FACP FIRE ALARM CONTROL PANEL
- AUDIBLE ALARMS SHALL HAVE A MINIMUM LEVEL OF 15 DBA IN EXCESS OF THE AMBIENT SOUND LEVEL OF THE ROOM, AND SHALL OTHERWISE BE IN ACCORDANCE WITH FBC 11-4-28.2.
- VISUAL ALARMS SHALL HAVE A MINIMUM LEVEL OF 75 CANDELA AND SHALL OTHERWISE BE IN ACCORDANCE WITH FBC 11-4-28.3.
- PROVIDE A RE-CERTIFICATION OF THE FIRE ALARM SYSTEM UPON COMPLETION OF WORK.

NEW FIRE ALARM DEVICES ARE TO BE COMPATIBLE WITH EXISTING SYSTEM. PROVIDE ADDITIONAL COWER SUPPLIES AS REQUIRED TO MEET AUDIBLE AND VISIBLE REQUIREMENTS OF NFPA 72, ADA, AND NFPA 101. FIELD VERIFY POINT OF CONNECTION TO EXISTING SYSTEM.

THE CONTRACTOR IS RESPONSIBLE FOR ENSURING THAT ALL NEW AND EXISTING ELECTRICAL SYSTEMS, FIXTURES, DEVICES, AND OTHER EQUIPMENT RELATED THESE TENANT SPACES, ARE IN GOOD WORKING ORDER. REPAIR AS NEEDED.

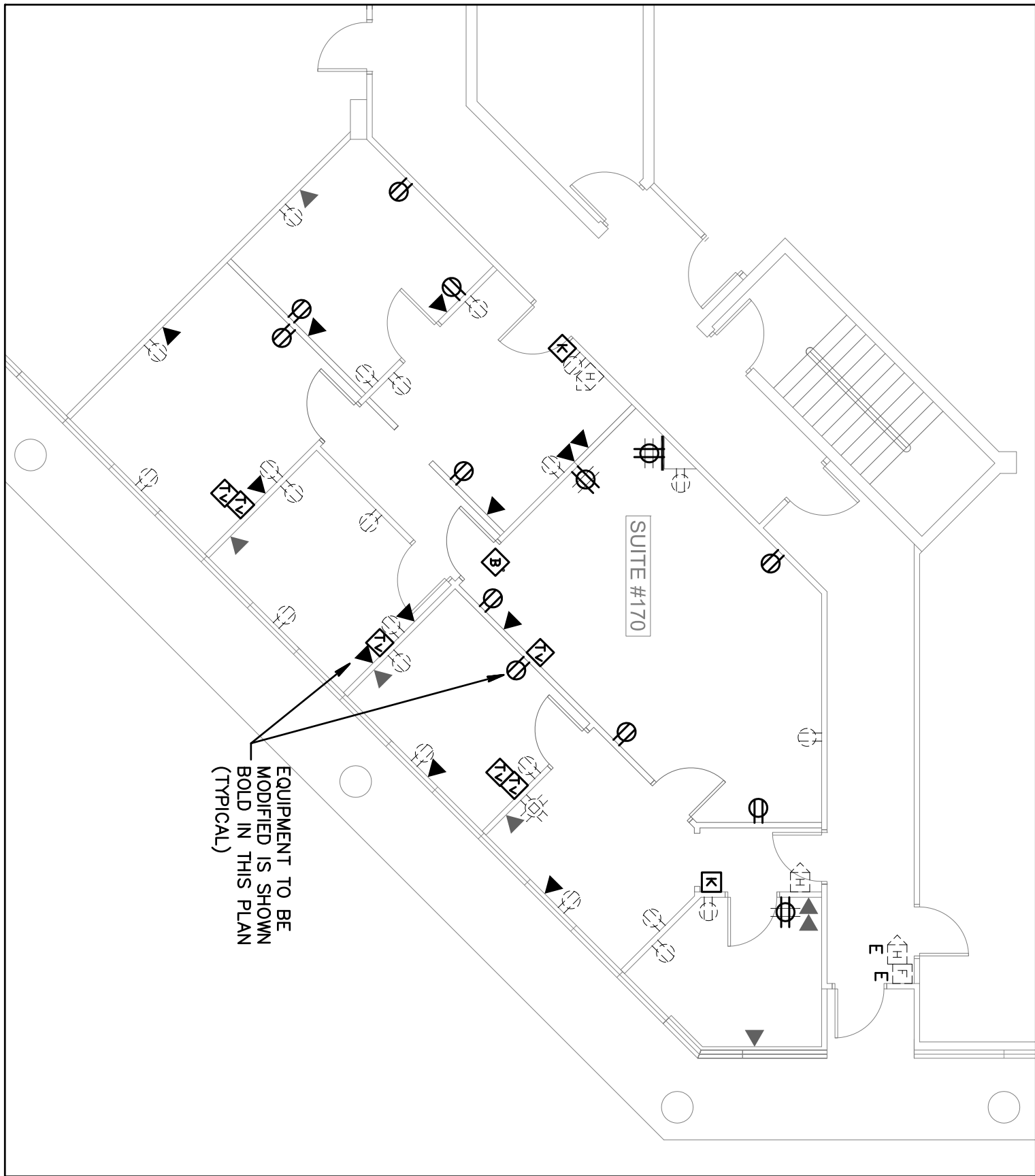
RE-CONNECT EXISTING CIRCUITS AND HOMERUNS AS REQUIRED DUE TO DEMOLITION, FIELD VERIFY (TYPICAL)



DRAWING KEYNOTES:

- 1 CONNECT TO EXISTING 120 VOLT 20 AMP CIRCUIT IN THIS AREA (WHICH WAS SERVING DEVICES TO BE DEMOLISHED) WITH 2 #12 & #10 IN 1/2" C. FIELD VERIFY EXISTING CIRCUIT NUMBERS. (TYPICAL 120V CIRCUIT)
- 2 CONNECT HEAT PUMP A/C UNIT TO EXISTING 277 VOLT CIRCUIT IN THIS AREA, WITH 2 #10 & #10G IN 1/2" C. EXISTING CIRCUITS FROM 30 AMP 3 POLE CIRCUIT BREAKER IN 480/277 VOLT PANEL, "HA" IN MAIN ELECTRICAL ROOM. FIELD VERIFY ALL CIRCUIT NUMBERS.

EXISTING ELECTRICAL FLOOR PLAN



Gilman & Associates, Inc.  
MECHANICAL & ELECTRICAL ENGINEERS  
807 NORTH LAKESIDE DRIVE  
Lake Worth, FL 33460 CA.\*009078  
(561) 582-0210 Fax (561) 582-8212  
RONALD D. GILMAN P.E. \*37933

PROJ# 12-007

Bd

birse design inc.

5300 woodland lakes drive  
palm beach gardens, fl 33418  
phone 561-249-4001  
fax 772-409-8684  
AA26001615

WASHTON LUKENS

FAIRWAY OFFICE CENTER  
7108 FAIRWAY DR #170  
PALM BEACH GARDENS, FL

PROJECT NUMBER 710830

REVISIONS

|   |  |
|---|--|
| 1 |  |
| 2 |  |
| 3 |  |
| 4 |  |
| 5 |  |

DRAWN BY GD

CD

3/29/12

E-1