

HVAC CONTROLS NOTE

AIR CONDITIONING CONTRACTOR SHALL PROVIDE OR CAUSE TO BE PROVIDED, AIR CONTROLS CONTROL WIRING & CONDENSATE PUMP AS NOTED AND ALL OTHER ITEMS NECESSARY FOR INSTALLATION AND CONTROL OF HEAT PUMP AIR CONDITIONING UNITS. IN ADDITION, CONTRACTOR SHALL PROVIDE INTERFACE WITH THE EXISTING EMS SYSTEM COMPUTER GRAPHICALLY DEPICTING MECHANICAL LAYOUT WITH ON SCREEN DISPLAYS THAT ARE CONTROLLED BY THE EXISTING ENERGY MANAGEMENT SYSTEM (EMS). CONTRACTOR SHALL BE RESPONSIBLE FOR THE INTERFACE TO EXISTING EMS PROGRAM AND MAKE THE NECESSARY OPERATIVE USAGE CONTRACTOR PRE-NOVA AT 954-915-9930 (ROCK SALAZAR) FOR ALL SPECIFICATIONS AND DETAILS. A COMPLETE AND OPERATIONAL CONTROL SYSTEM IS TO BE PROVIDED.

THERMOSTATS ARE TO BE WHITE-RODGERS, MODEL F88-344 SINGLE STAGE NON-PROGRAMMABLE TYPE.

THE ABOVE NOTES APPLY TO ALL EQUIPMENT IN THE TENANT SPACES, INCLUDING EXISTING HEAT PUMPS.

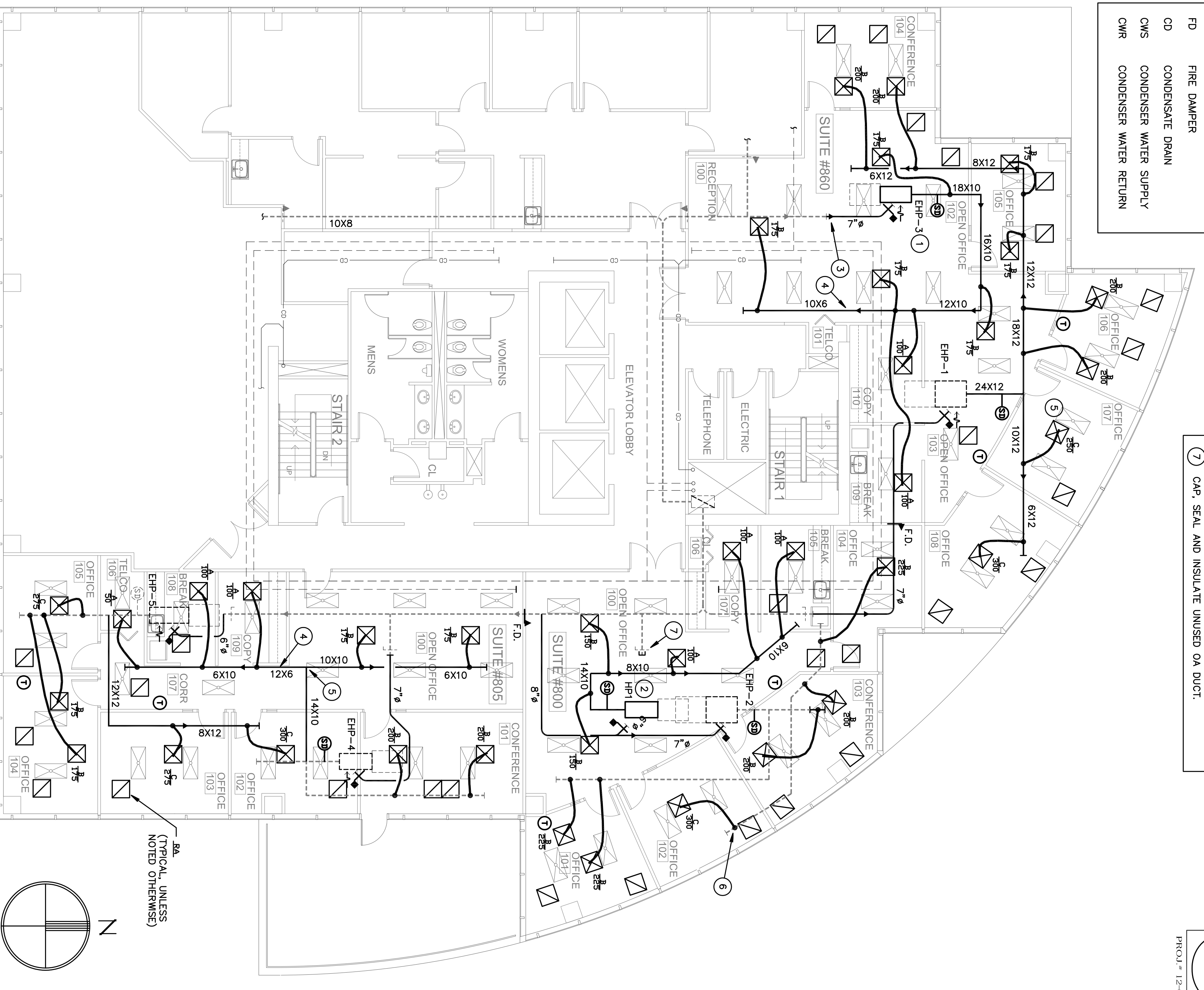
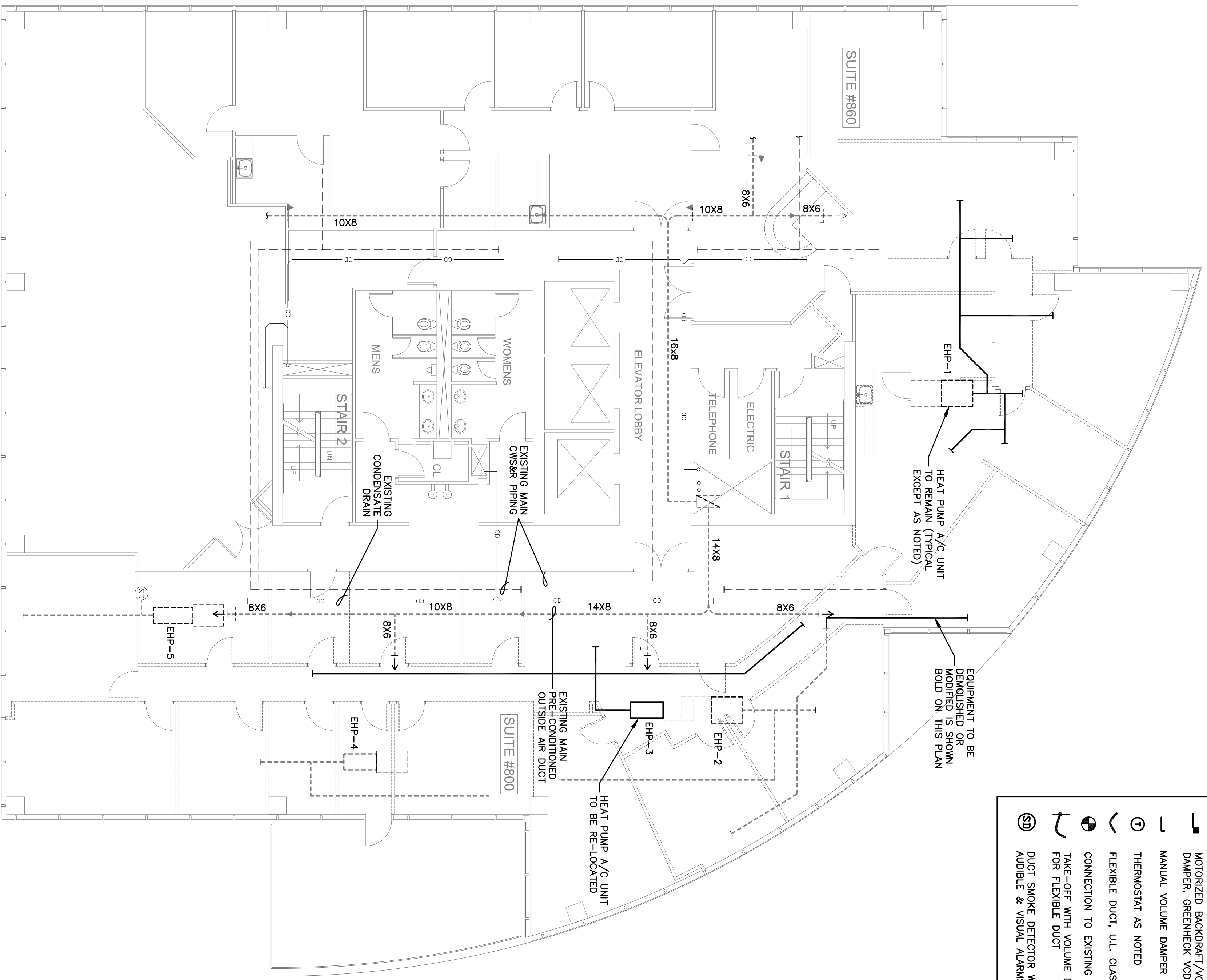
SYMBOL LEGEND

	HEAT PUMP A/C UNIT AS NOTED
	EXISTING EQUIPMENT AS NOTED
	SUPPLY AIR DIFFUSER AS NOTED
	RETURN/TRANSFER GRILLE AS NOTED
	DUCTWORK AS NOTED
	EXISTING DUCTWORK TO REMAIN
	DUCT TRANSITION
	TYPE B FIRE DAMPER
	W/ACCESS DOOR
	MOTORIZED BACKDRAFT/VOLUME DAMPER, GREENCHECK VDRB3
	MANUAL VOLUME DAMPER
	THERMOSTAT AS NOTED
	FLEXIBLE DUCT, U.L. CLASS 1
	CONNECTION TO EXISTING EQUIPMENT
	TAKE-OFF WITH VOLUME DAMPER FOR FLEXIBLE DUCT
	DUCT SMOKE DETECTOR WITH AUDIBLE & VISUAL ALARMS

ABBREVIATIONS

HP	HEAT PUMP
W	WATER SOURCE TYPE
EHP	EXISTING HEAT PUMP
S/A	SUPPLY AIR
R/A	RETURN AIR
O/A	OUTSIDE AIR
E/A	EXHAUST AIR
CFM	CUBIC FEET PER MINUTE
MVD	MANUAL VOLUME DAMPER (OPPOSED BLADE TYPE)
FD	FIRE DAMPER
CD	CONDENSATE DRAIN
CWS	CONDENSER WATER SUPPLY
CWR	CONDENSER WATER RETURN

- PLAN KEYNOTES:**
- EXISTING A/C UNIT IN NEW LOCATION.
 - NEW A/C UNIT IN PLACE OF EXISTING UNIT. CONNECT DRAIN PIPING IN THIS LOCATION AS REQUIRED.
 - PROVIDE SQUARE TO ROUND SHEETMETAL TRANSITION FROM EXISTING DUCT AS REQUIRED. FIELD VERIFY EXACT SIZES AND CONDITIONS (TYPICAL)
 - PROVIDE FLATTENED DUCT TRANSITION UNDER BEAM IN THIS AREA AS REQUIRED. FIELD VERIFY.
 - PROVIDE DUCT SPLIT WITH TURNING VANES.
 - EXISTING FLEXIBLE DUCT TAKE-OFFS MAY BE RE-USED WHERE SIZE MATCHES NEW FLEXIBLE DUCT. FIELD VERIFY (TYPICAL)
 - CAP, SEAL AND INSULATE UNUSED OA DUCT.



Gilman & Associates, Inc.
MECHANICAL & ELECTRICAL ENGINEERS
807 NORTH LAKESIDE DRIVE
Lake Worth, FL 33460 CA.#090978
(561) 582-0210 Fax (561) 582-8212
RONALD D. GILMAN P.E. #37933

birse design inc.

5300 woodland lakes drive
palm beach gardens, fl 33418

phone 561-249-4001
fax 772-409-8684
AA26001615

8TH FLOOR SPEC SUITES

1400 CENTREPARK
1400 CENTREPARK DR
WEST PALM BEACH, FL

PROJECT NUMBER CP40

REVISIONS

1	
2	
3	
4	
5	

DRAWN BY GD
CD
10/5/12

M-1

EXISTING HVAC FLOOR PLAN
1/8" = 1'-0"

PROPOSED HVAC FLOOR PLAN
1/8" = 1'-0"