

PLUMBING LEGEND

- HOT WATER LINE
- COLD WATER LINE
- SANITARY LINE
- CONDENSATE LINE
- ⊕ FLOOR DRAIN
- ⊕ SHUT-OFF VALVE
- ⊕ HOSE BIBB WITH 5/8" & VACUUM BREAKER

PROJECT: DAYCARE

SANITARY SIZING	NO.	FIXTURE	UNIT	TOTAL	MIN. TRAP SIZE
LAVATORY	9	4.0	36.0	37.0	1 1/2"
WATER CLOSET	9	4.0	36.0	37.0	1 1/2"
URINAL	10	2.0	20.0	11.0	1 1/2"
TRIPLE SINK	5	2.0	10.0	11.0	1 1/2"
ST. JACK WASH/DRYER	1	2.0	2.0	3.0	1 1/2"
DRINKING FOUNTAIN	2	1.0	2.0	2.0	1 1/2"
TOTAL	31		66.0		

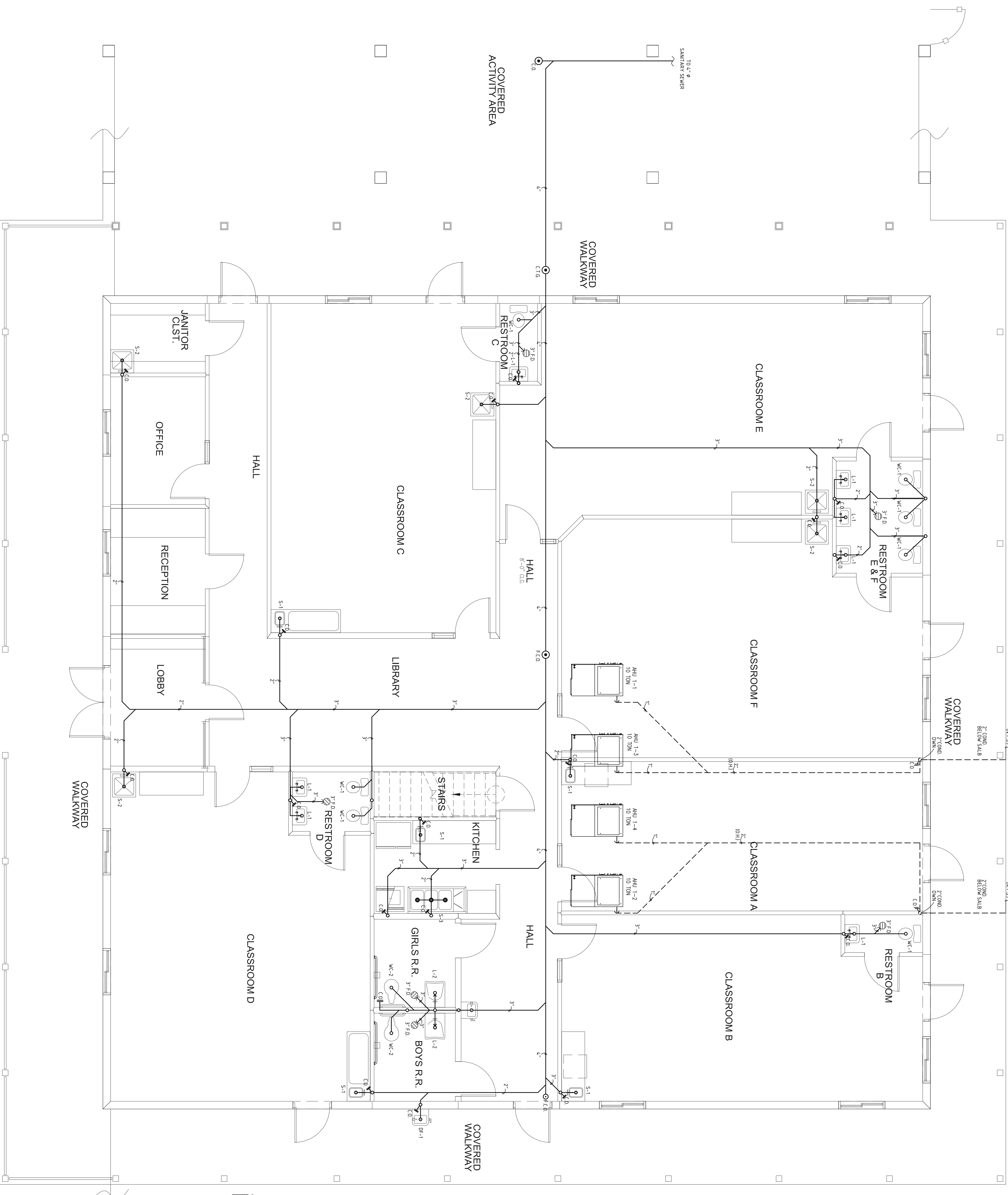
TOTAL SANITARY FIXTURE UNITS: 66.0
MINIMUM SIZE SANITARY LINE @ 1/8" SLOPE: 3"

HOT & COLD WATER SIZING

FIXTURE TYPE	NO.	CM.F.U./EA.	TOTAL	IN.F.U./EA.	TOTAL
LAVATORY	9	15	135	15	135
WATER CLOSET	9	5.0	45.0	15	72
URINAL	10	1.5	15	1.5	15
TRIPLE SINK	5	1.5	7.5	1.5	15
ST. JACK WASH/DRYER	1	1.5	1.5	1.5	1.5
DRINKING FOUNTAIN	2	1.0	2.0	-	-
HOSE BIBB	1	2.0	2.0	-	-
TOTAL	31		80.5		315

TOTAL C.M.F.U. = 80.5 + 315 = 112.0
MINIMUM SIZE WATER SERVICE: 1-1/2"
MINIMUM SIZE WATER METER: 1-1/2"

KEY NOTES:
 1. BUILDING'S EXISTING SANITARY LINE. CONTRACTOR TO VERIFY EXACT LOCATION, INVERT & CONNECTION POINT PRIOR TO CONSTRUCTION & CONNECT NEW PLUMBING ACCORDINGLY.



SANITARY PLAN

SCALE: 1/4" = 1'-0"

PERMIT SET: 01/26/12

NOTE:
 REVISIONS CHANGES TO THE SYSTEM COVERED BY THESE PLANS WITHOUT PRIOR APPROVAL OF THE ENGINEER WHO PREPARED THESE PLANS. WILL NULL AND VOID THESE PLANS AND THE REVISIONS MADE THEREON. THE ENGINEER ASSUMES NO RESPONSIBILITY FOR THE ORIGINAL DESIGN OR THE SYSTEM TO ITS ASSOCIATED WITH RETURNING THE SYSTEM TO ITS ORIGINAL DESIGN WHICH APPROVED THESE CHANGES. THE COMPANY WHICH APPROVED THESE CHANGES SHALL BE RESPONSIBLE FOR THE SYSTEM TO ITS ASSOCIATED WITH RETURNING THE SYSTEM TO ITS ORIGINAL DESIGN.

FORMICA & ASSOCIATES, INC.
 Consulting Engineers

3500 N.W. Boca Raton Blvd., Suite #711 33431
 Boca Raton, FL 33431
 TEL: (561) 368-4838 FAX: (561) 368-4733
 Robert F. Formica, P.E., License #19723
 Email: rformica@formicaengineers.com