

**FLOOR PLAN**  
SCALE: 1/8" = 1'-0"

DOOR NUMBER	DOOR TYPE	DOOR					FRAME		FIRE RATING LABEL	HWR GRP	NOTES
		WD	HGT	THK	MAT'L	FINISH	MAT'L	FINISH			
1711	G	6'-0"	7'-0"	1 3/4"	WOOD	STAIN	HM	PT-3	---	---	---
1712	A	3'-0"	8'-0"	1 3/4"	WOOD	STAIN	HM	PT-3	---	---	---
1713	B	6'-0"	8'-0"	1 3/4"	WOOD	STAIN	HM	PT-3	---	A	MAG-LOCK IN LLE ELECTRIC STRIKE
1714	C	6'-0"	8'-0"	1 3/4"	WOOD	STAIN	HM	PT-3	---	---	---
1715	A-2	3'-0"	8'-0"	1 3/4"	WOOD	STAIN	HM	PT-3	---	---	---
1716	A	3'-0"	8'-0"	1 3/4"	WOOD	STAIN	HM	PT-3	---	---	---
1717	A	3'-0"	8'-0"	1 3/4"	WOOD	STAIN	HM	PT-3	---	---	---
1718	A-2	3'-0"	8'-0"	1 3/4"	WOOD	STAIN	HM	PT-3	---	---	---
1719	A	3'-0"	8'-0"	1 3/4"	WOOD	STAIN	HM	PT-3	---	---	---
1720	A	3'-0"	8'-0"	1 3/4"	WOOD	STAIN	HM	PT-3	---	---	---
1721	A	3'-0"	8'-0"	1 3/4"	WOOD	STAIN	HM	PT-3	---	---	---
1722	A-2	3'-0"	8'-0"	1 3/4"	WOOD	STAIN	HM	PT-3	---	---	---
1723	A	3'-0"	8'-0"	1 3/4"	WOOD	STAIN	HM	PT-3	---	---	---
1724	A	3'-0"	8'-0"	1 3/4"	WOOD	STAIN	HM	PT-3	---	---	---
1725	A	3'-0"	8'-0"	1 3/4"	WOOD	STAIN	HM	PT-3	---	---	---
1726	A-3	3'-0"	8'-0"	1 3/4"	WOOD	STAIN	HM	PT-3	---	G	---
1727	D	3'-0"	8'-0"	1 3/4"	WOOD	STAIN	HM	PT-3	---	---	---
1730	E	3'-0"	8'-0"	1 3/4"	WOOD	STAIN	HM	PT-3	---	---	---
1731	A-3	3'-0"	8'-0"	1 3/4"	WOOD	STAIN	HM	PT-3	---	A	---
1732	F	8'-0"	8'-0"	1 3/4"	WOOD	PT-2	MTL	PT-3	---	---	---
1733	A-3	3'-0"	8'-0"	1 3/4"	WOOD	STAIN	HM	PT-3	---	D	---
1734	A-3	3'-0"	8'-0"	1 3/4"	WOOD	STAIN	HM	PT-3	---	F	---
1737	F	6'-0"	8'-0"	1 3/4"	WOOD	PT-2	MTL	PT-3	---	---	HINGE STOP

**DOOR NOTES**

- FINAL COORDINATION OF KEYING FUNCTIONS SHALL BE WITH TENANT. KEYING TO BE INCLUDED IN TOTAL PROJECT COSTS
- ALL EXIT HARDWARE SHALL COMPLY WITH F.B.C. 2007 W/ 2009 AMENDMENTS SECTION 1008.19
- LEVER HARDWARE SHALL BE SO-LAGE, AL-SERIES, JUPITER LEVER, FINISH #626 SATIN CHROME
- CLOSURES TO BE LCN 2 FINISH TO MATCH LEVER
- HINGES TO BE BY HAGER, FINISH LS626
- SILENCERS TO BE BY HAGER
- WALL STOP BY HAGER
- FLUSH BOLT - HAGER
- DOOR STOP BY GLYNN-JOHNSON, FINISH US32D
- DOORS 1713 & 1731 SHALL BE KEYPED IN A MANNER THAT WILL NOT PROHIBIT A PERSON FROM EXITING THE BUILDING.
- DOORS 1713 & 1731 TO RECEIVE CARD READER - COORDINATE WITH SECURITY SUBCONTRACTOR.
- DOORS 1713 & 1731 TO RECEIVE ELECTRIC STRIKES - COORDINATE WITH ELECTRICAL DRAWINGS & SECURITY SUBCONTRACTOR.
- ALL STAINED WOOD DOORS TO BE MARSH-FIELD DOOR SYSTEMS, WOOD SPECIES CHERRY, PLAIN SLICED, FINISH TO MATCH INTERIOR DESIGNER SAMPLE
- MARSH-FIELD DOORS TO BE THE ENVIRONMENTAL MODELS - GO TO SUBMIT OUT SHEETS FOR APPROVAL
- ALL ACCESS-CONTROLLED EGRESS DOORS MUST COMPLY WITH FLORIDA FIRE PREVENTION CODE SECTION 7.2.1.6.2

**HARDWARE SETS:**

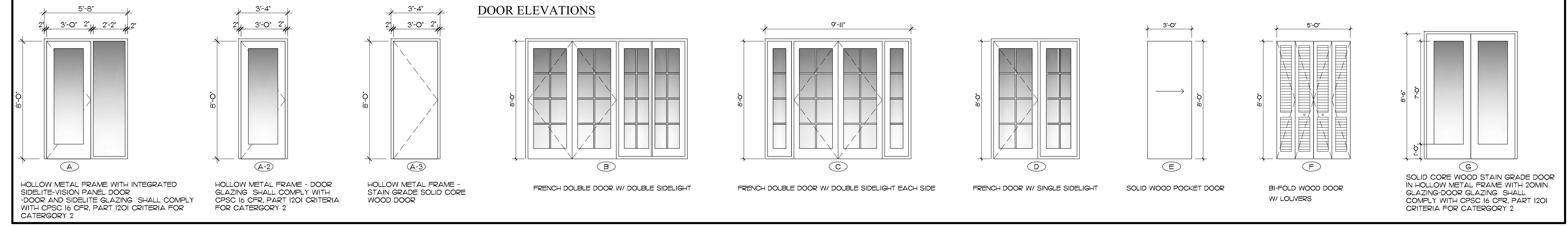
<b>A</b> CARD READER-P-500 ALPS PROXIMITY READER ELECTRIC STRIKE-DORMA ES110 LEVER STOREROOM SET-W581 HINGES 4'X4' - BB168 CLOSER 2030 SILENCER 307D WALL STOP 230W	<b>B</b> LEVER ENTRY/OFFICE - W511 HINGES 4'X4' - BB1279 WALL STOP 230W	<b>C</b> LEVER ENTRY/OFFICE - W511 HINGES 4'X4' - BB1279 SILENCER 307D DOOR STOP 410-S	<b>D</b> LEVER STOREROOM W581 HINGES 4'X4' - BB1279 SILENCER 307D CLOSURE - LCN 2010 DOOR STOP 410-S
<b>E</b> POCKET DOORS: (2) SLIDING DOOR EDGE PULLS: IVES 230B26D	<b>F</b> LEVER PASSAGE SET - W101 HINGES 4'X4' - BB1279 SILENCER 307D WALL STOP 230W	<b>G</b> LEVER PASSAGE SET - W101 HINGES 4'X4' - BB1279 SILENCER 307D DOOR STOP 410-S	

**PLAN KEY NOTES**

- [A] NEW BUILT-IN CABINETS BY GC. BLOCKING TO BE PROVIDED BY GC
- [B] WALL MOUNTED TV LOCATION - GC TO PROVIDE FRIT BACKING WITHIN WALL
- [C] NEW SINGLE COMPARTMENT SINK - SEE PLUMBING DRAWINGS
- [D] NEW ADJUSTABLE SHELVING

**PARTITION AND SYMBOL KEY**

- 1 - - - - - EXISTING EXTERIOR WALL
- 2 - - - - - NEW PARTITION SEE DETAIL 41A-3.0
- 3 - - - - - EXISTING I-R RATED DEMISING WALL  
GC SHALL CHECK ALL EXISTING RATED WALLS TO MAKE SURE THAT THE REQUIRED WARNING SIGNAGE IS PAINTED ABOVE CEILINGS. IF NOT THE CONTRACTOR SHALL PAINT ABOVE THE CEILING TO BE VISIBLE FIRE AND SMOKE BARRIER PROTECT ALL OPENINGS
- 4 - - - - - NEW SOUND PARTITION TO BOTTOM OF DECK - SEE DETAIL 17A-5.0
- 5 - - - - - EXISTING PARTITION TO REMAIN-GC TO PATCH AND REPAIRS WALLS TO RECEIVE PAINT
- (TX) DOOR NUMBER
- PEC FIRE EXTINGUISHER CABINET - SEE DETAIL 14A-2.0
- NEW CEILING MOUNTED EXIT LIGHTS AS REQ'D - SEE ELECTRICAL DRAWINGS



**DOOR ELEVATIONS**

HOLLOW METAL FRAME WITH INTEGRATED SIDELITE-VISION PANEL. DOOR AND SIDELITE GLAZING SHALL COMPLY WITH CPSC 16 CFR, PART 1201 CRITERIA FOR CATEGORY 2

HOLLOW METAL FRAME - DOOR GLAZING SHALL COMPLY WITH CPSC 16 CFR, PART 1201 CRITERIA FOR CATEGORY 2

HOLLOW METAL FRAME - STAIN GRADE SOLID CORE WOOD DOOR

FRENCH DOUBLE DOOR W/ DOUBLE SIDELIGHT

FRENCH DOUBLE DOOR W/ DOUBLE SIDELIGHT EACH SIDE

FRENCH DOOR W/ SINGLE SIDELIGHT

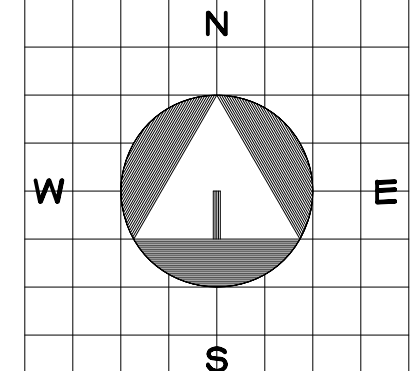
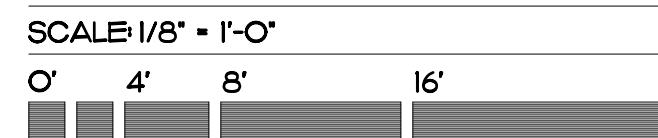
SOLID WOOD POCKET DOOR

BI-FOLD WOOD DOOR W/ LOUVERS

SOLID CORE WOOD STAIN GRADE DOOR IN HOLLOW METAL FRAME WITH ZOMIN GLAZING-DOOR GLAZING SHALL COMPLY WITH CPSC 16 CFR, PART 1201 CRITERIA FOR CATEGORY 2

**17TH FLOOR PLAN**

SCALE: 1/8" = 1'-0"



**GLIDDEN • SPINA & PARTNERS**  
ARCHITECTURE • INTERIOR DESIGN, INC.

**GS&P**

PHONE: 561.684.5594 • FAX: 561.684.6844 • E-MAIL: info@gsp-architects.com  
1401 FORUM WAY, SUITE 100 • WEST PALM BEACH, FLORIDA 33401  
FL License #A326001602  
Benjamin John Glidden, III #AR13419  
Keith M. Spina #AR13419

**TENANT IMPROVEMENTS FOR:**  
**NH & M** KNOWLEN, HOLT & MINER, P.A.  
AT NORTHBRIDGE CENTER  
515 N. FLAGLER DR., SUITE 1700  
WPB, FLORIDA

COPYRIGHT 2009  
THESE DRAWINGS ARE FOR THE EXCLUSIVE USE OF GLIDDEN, SPINA & PARTNERS, INC. AND MAY NOT BE REPRODUCED, COPIED, OR USED IN ANY MANNER WITHOUT THE EXPRESS WRITTEN CONSENT OF GLIDDEN SPINA & PARTNERS, INC. ALL RIGHTS RESERVED.

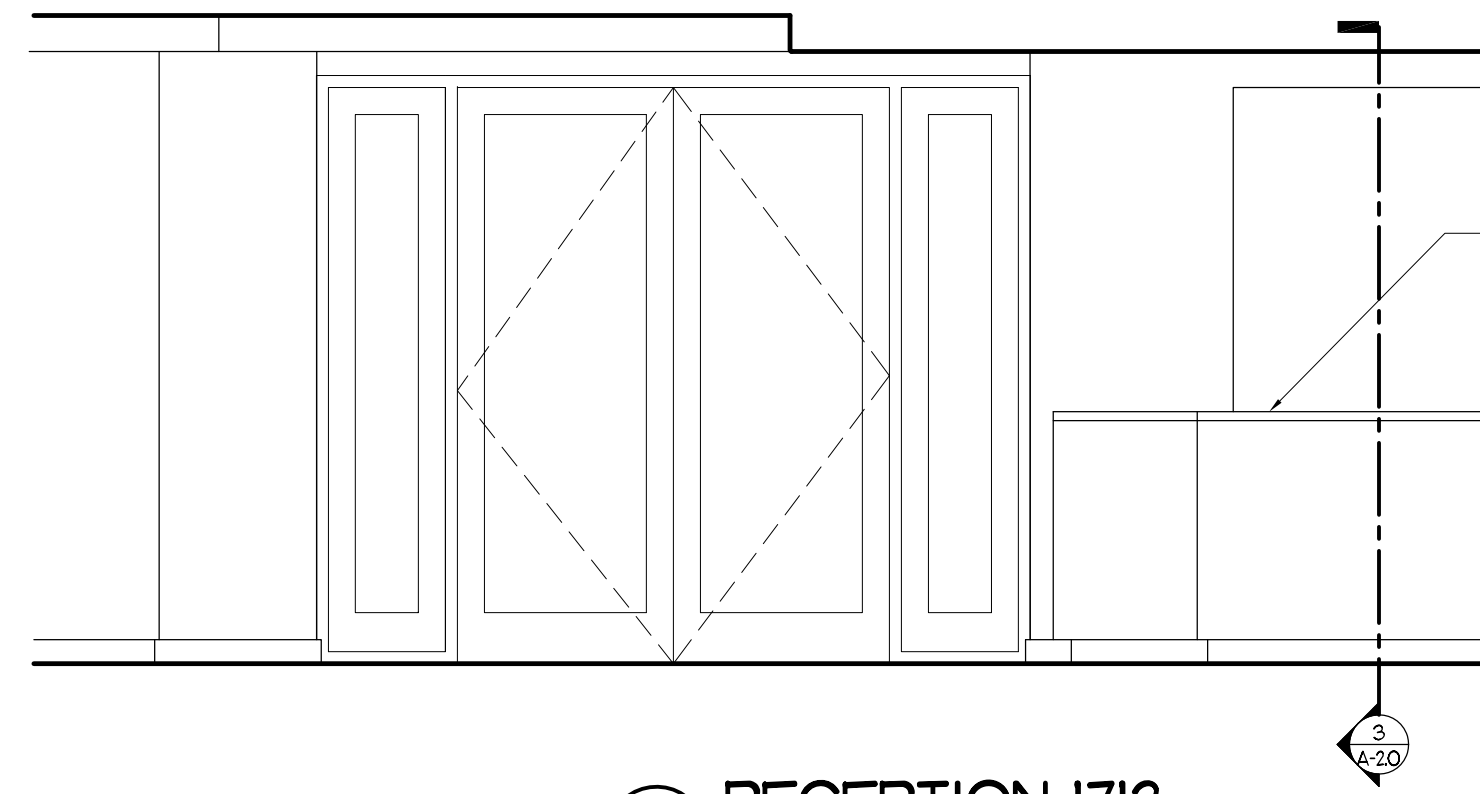
Sheet title: 17TH FLOOR PLAN  
file name: MKR&S-DTLS.DWG

revisions:

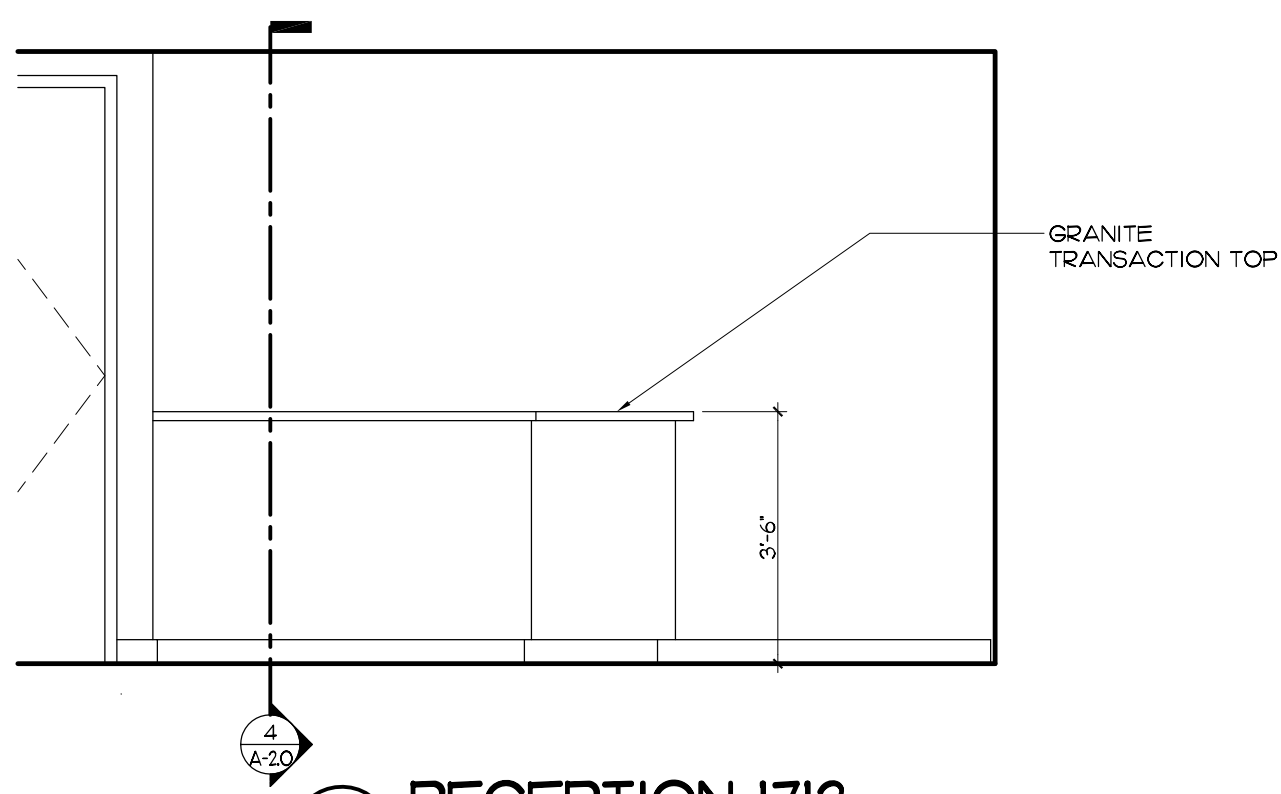
project no: 11198  
date: 11/19/11  
drawn by: BUJOE  
checked by: KS

**A-1.0**

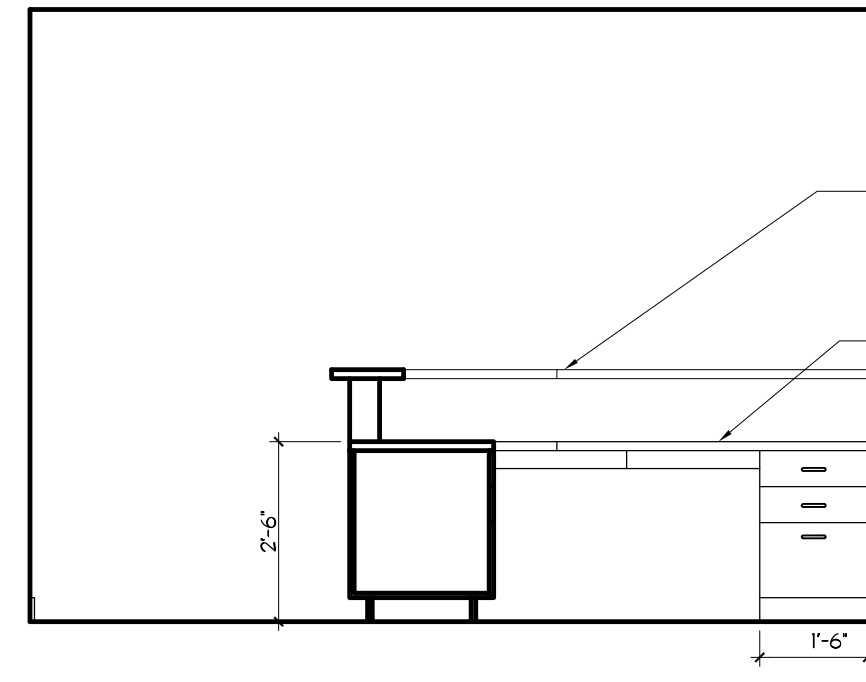




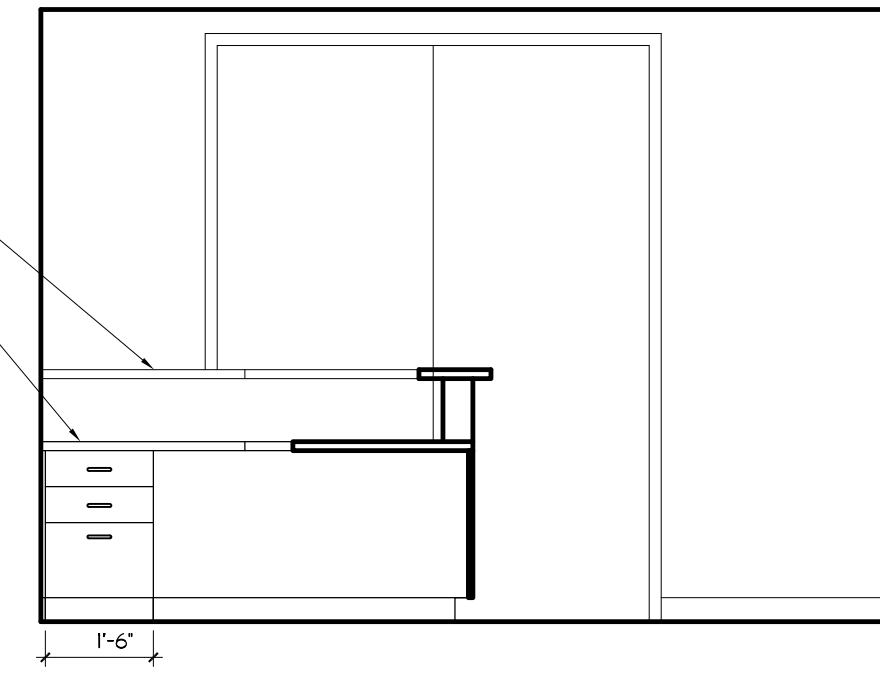
1 RECEPTION 1712  
SCALE: 3/8"=1'-0"



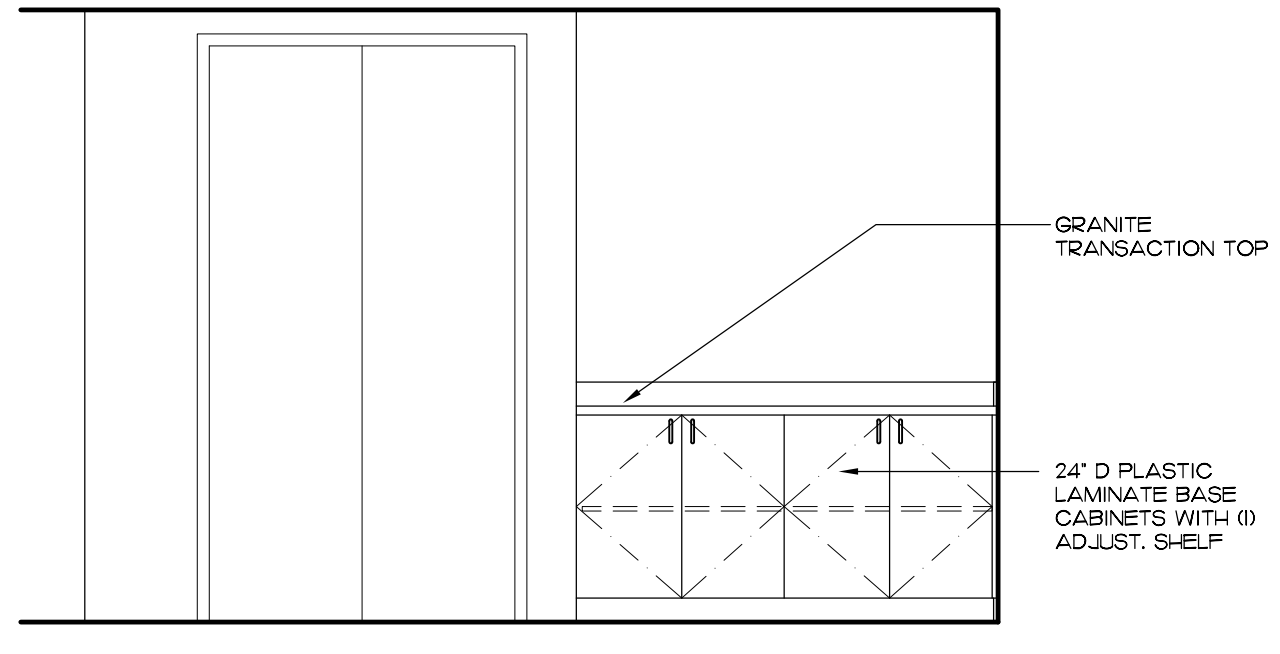
2 RECEPTION 1712  
SCALE: 3/8"=1'-0"



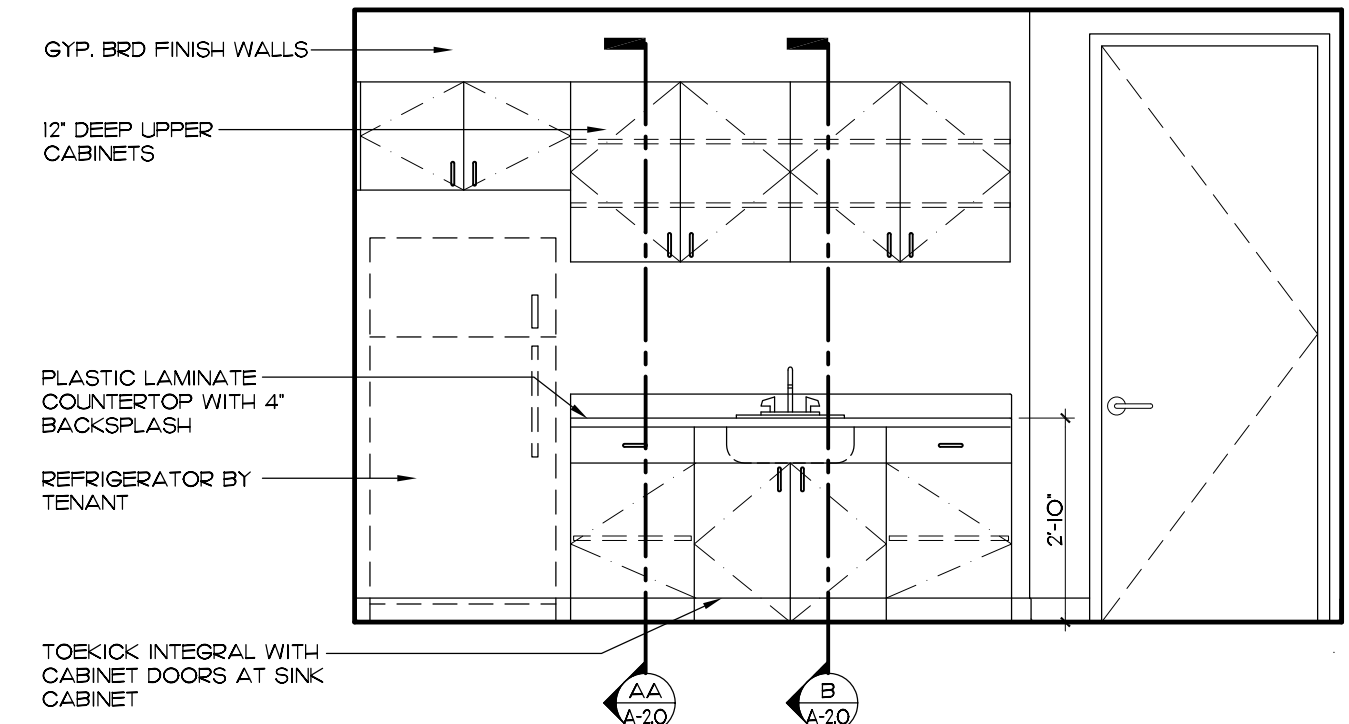
3 RECEPTION 1712  
SCALE: 3/8"=1'-0"



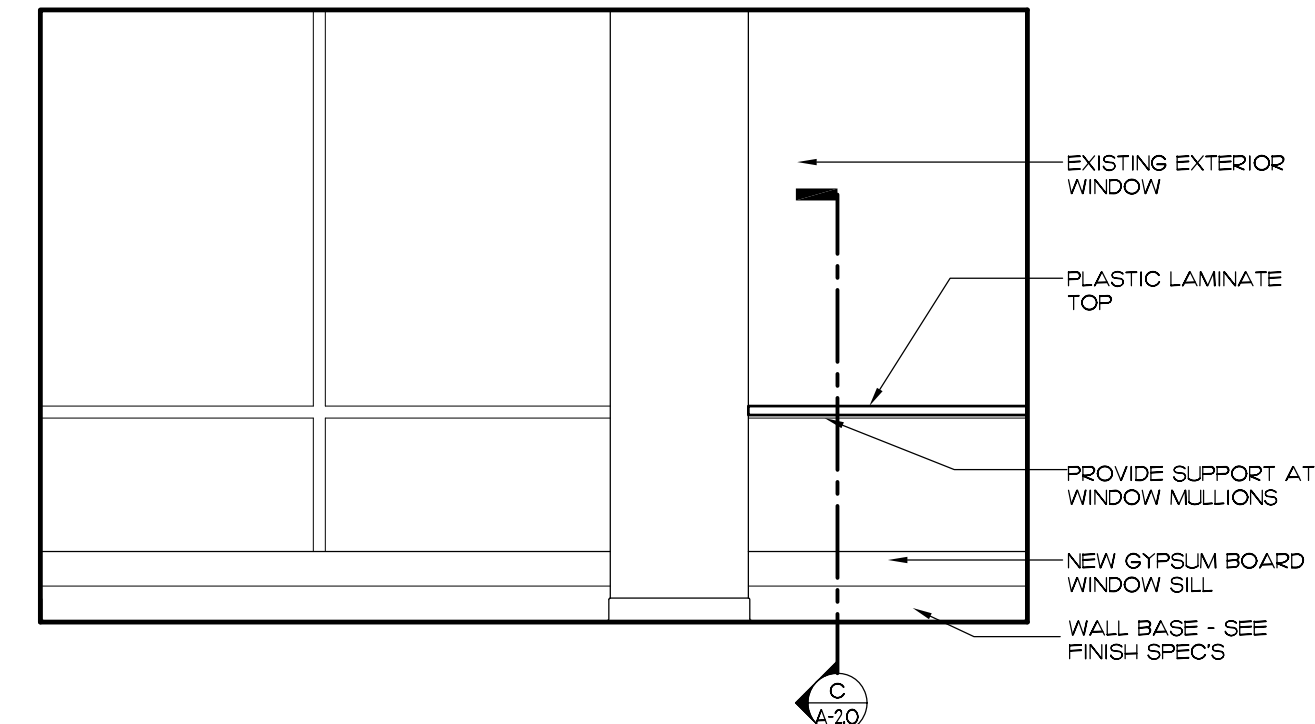
4 RECEPTION 1712  
SCALE: 3/8"=1'-0"



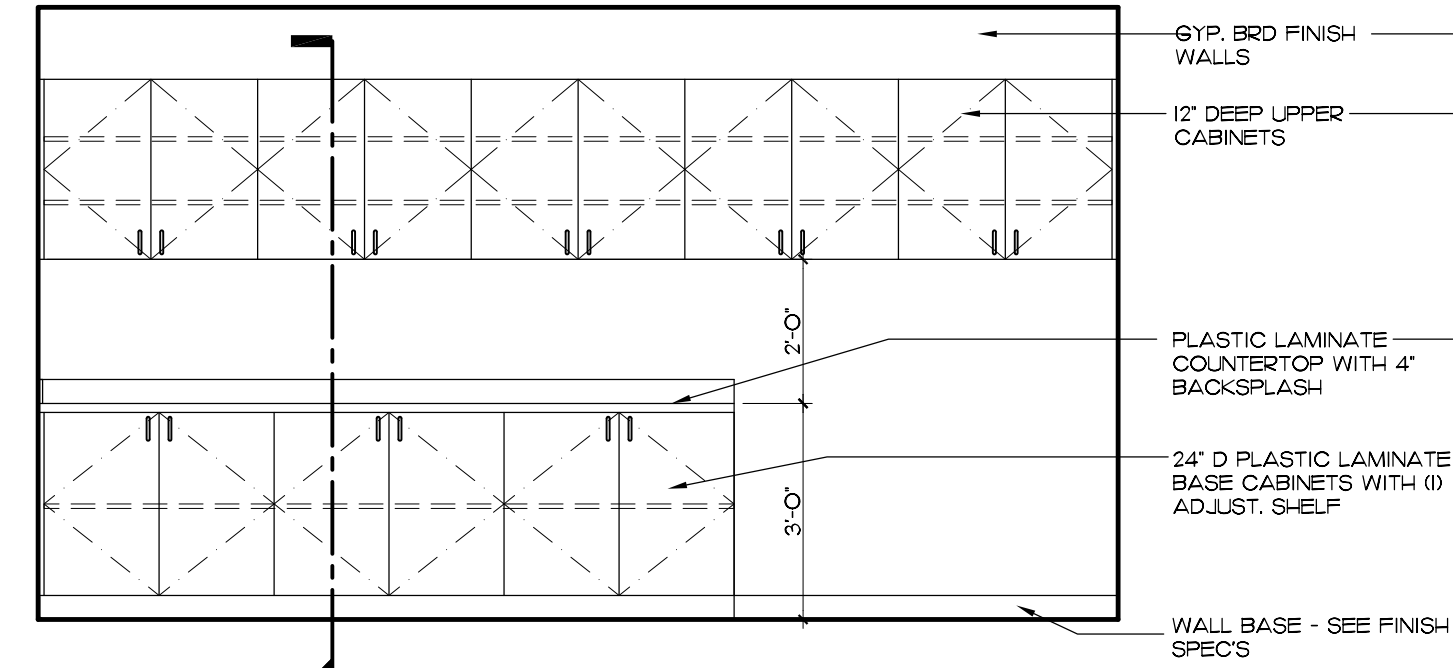
5 COFFEE BAR 1712  
SCALE: 3/8"=1'-0"



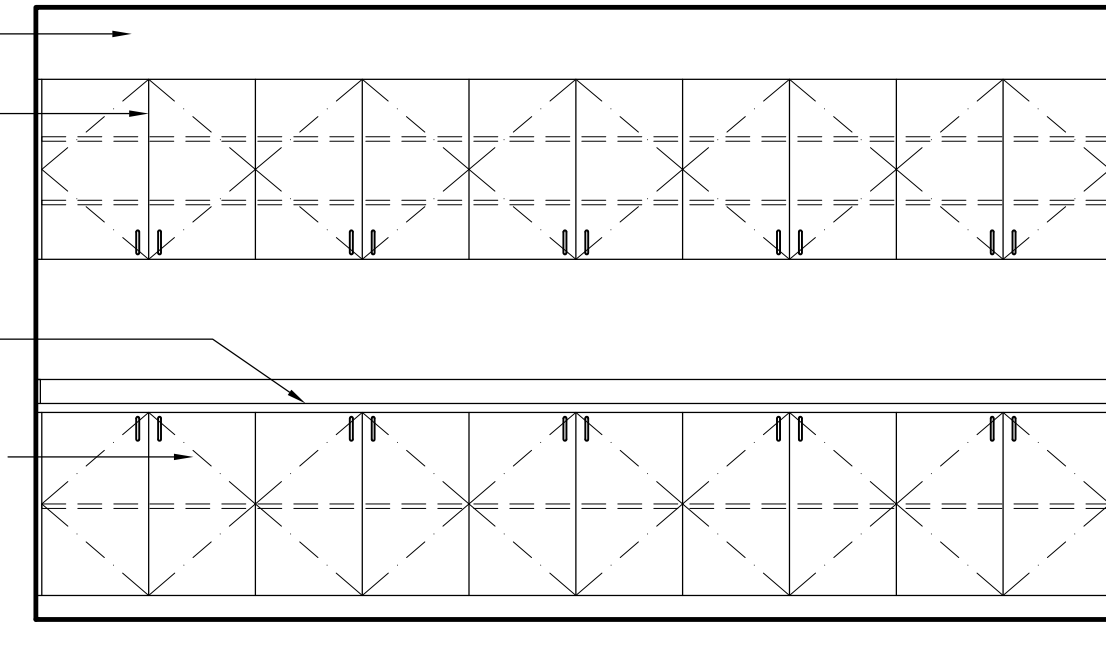
6 BREAKROOM 1722  
SCALE: 3/8"=1'-0"



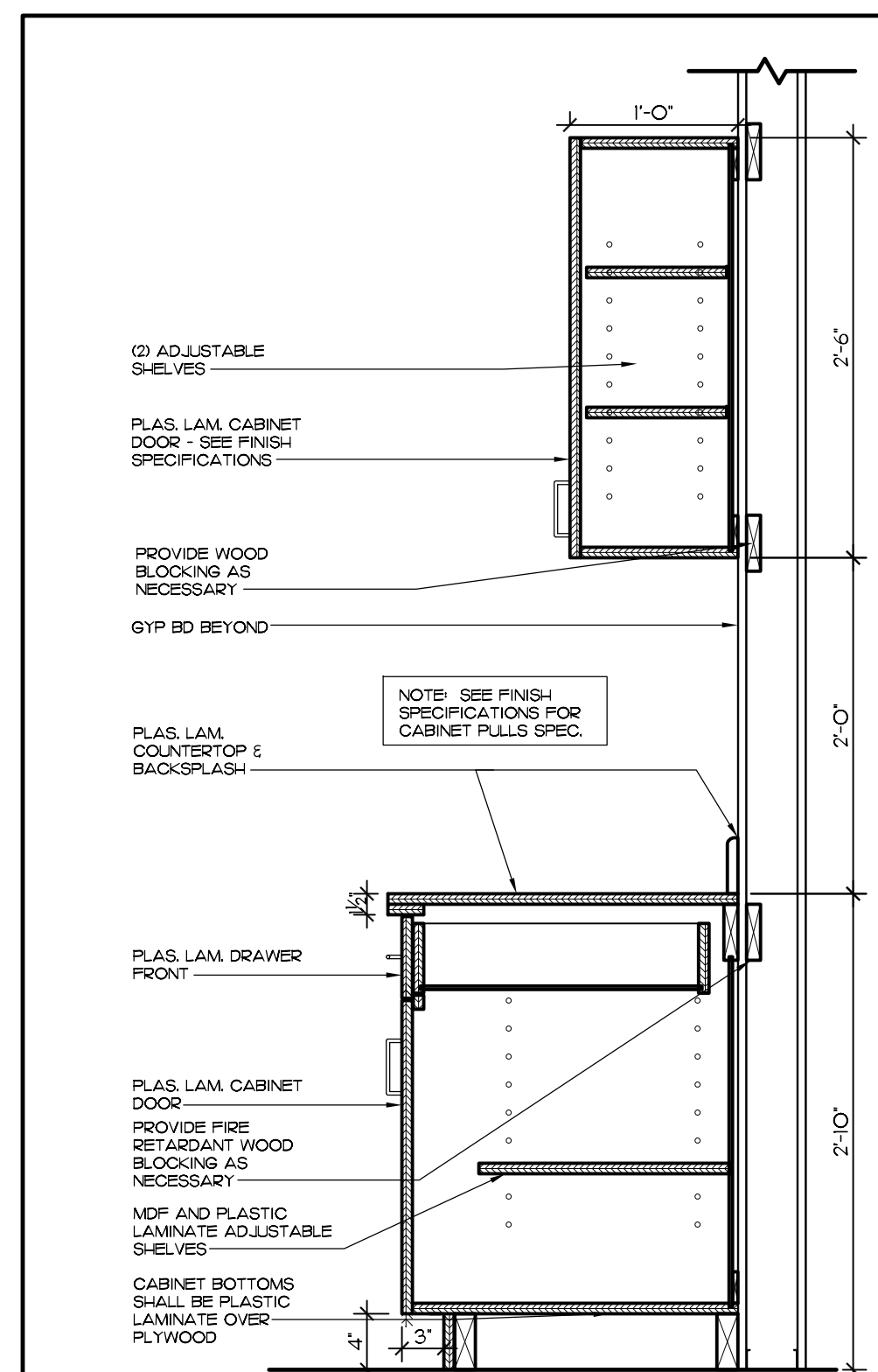
7 BREAKROOM 1722  
SCALE: 3/8"=1'-0"



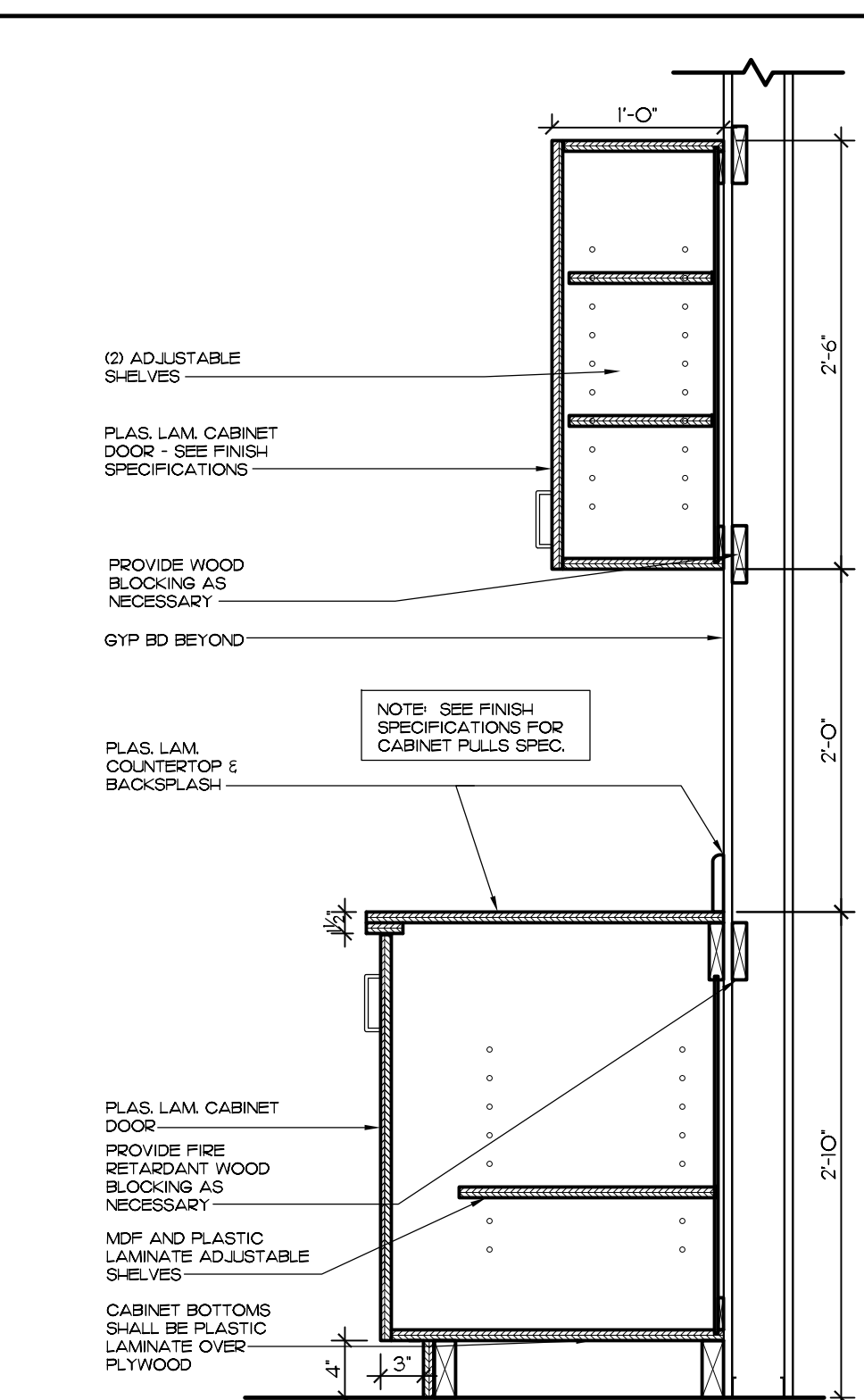
9 COPY ROOM 1728  
SCALE: 3/8"=1'-0"



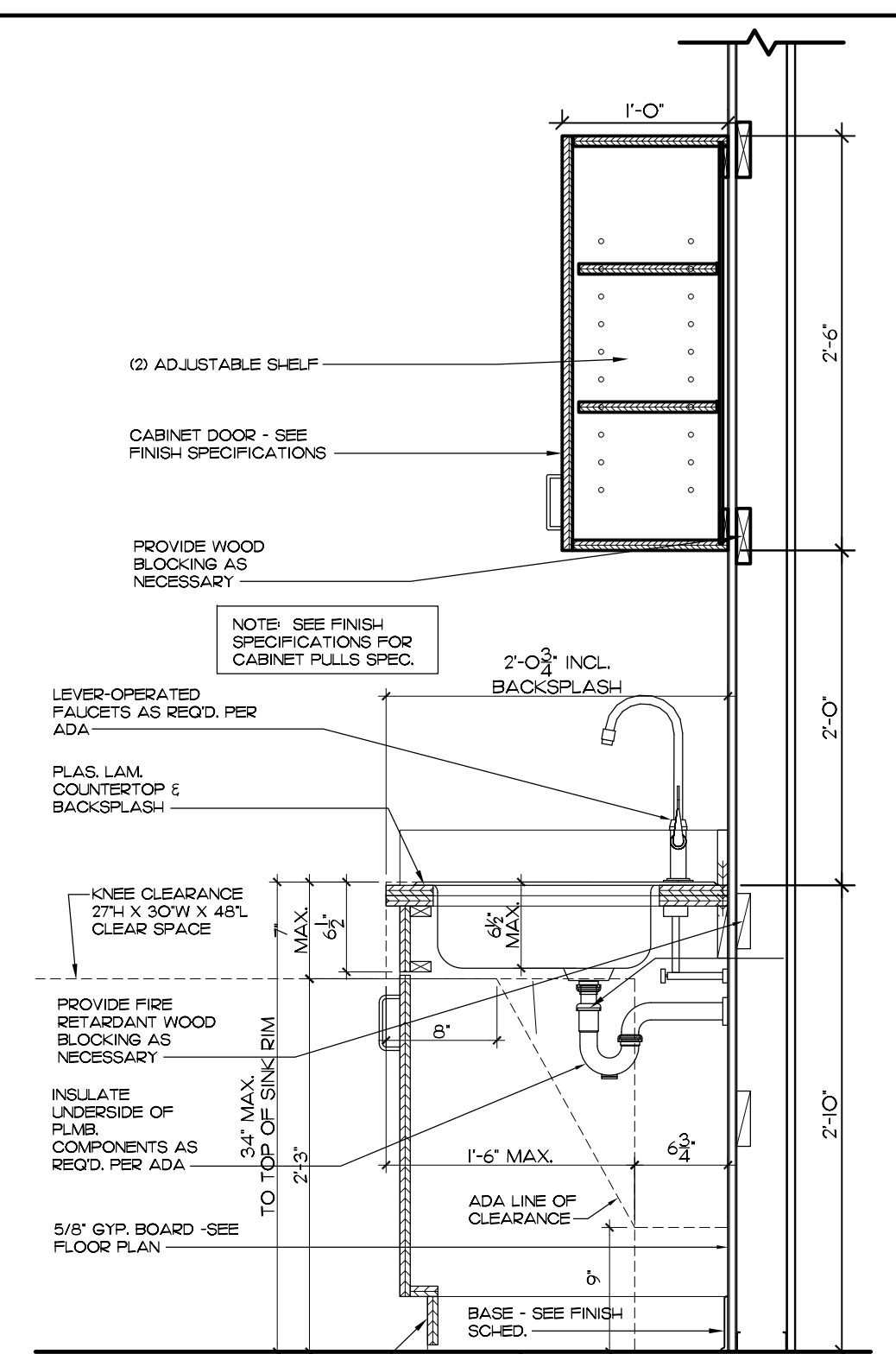
8 COPY ROOM 1728  
SCALE: 3/8"=1'-0"



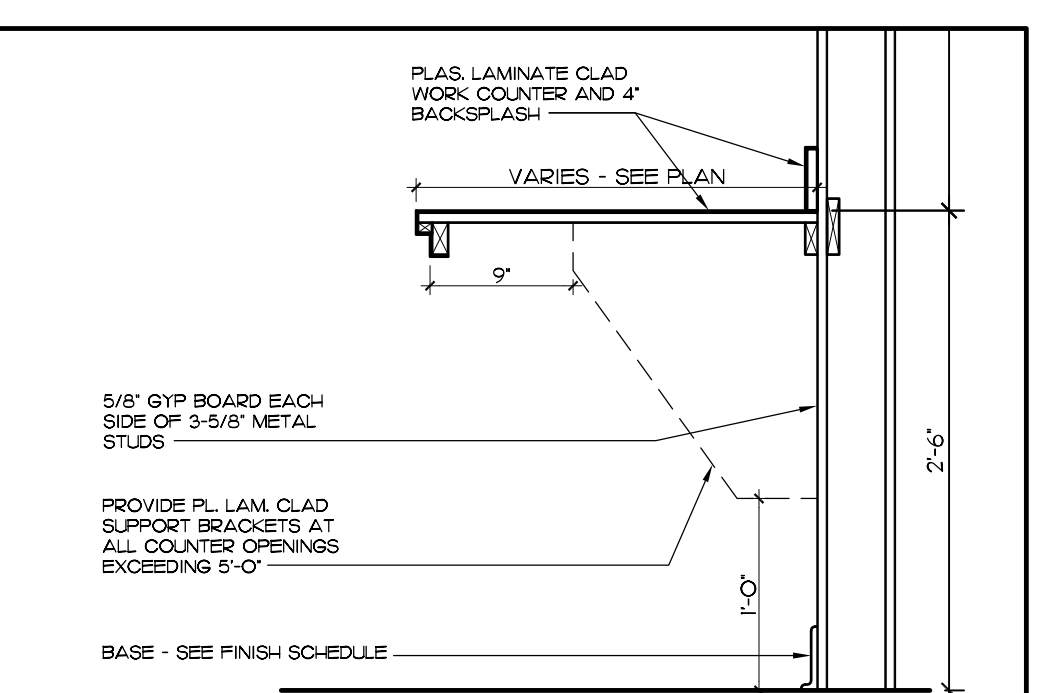
A BASE / UPPER CABINETS  
SCALE: 1"=1'-0"



AA BASE / UPPER CABINETS  
SCALE: 1"=1'-0"



B SINK AND COUNTERTOP  
SCALE: 1"=1'-0"



C WORKSTATION COUNTER  
SCALE: 1"=1'-0"

INTERIOR ELEVATIONS AND SECTIONS

SCALE: AS NOTED

**GLIDDEN • SPINA & PARTNERS**  
ARCHITECTURE • INTERIOR DESIGN, INC.  
PHONE: 561.684.5594 • FAX: 561.684.6844 • E-MAIL: info@gsp-architects.com  
1401 FORUM WAY, SUITE 100 • WEST PALM BEACH, FLORIDA 33401  
FL License #A236001602  
Benjamin John Glidden, III #AR6536  
Keith M. Spina #AR13419

**TENANT IMPROVEMENTS FOR:**  
**NH & M** NOWLEN, HOLT & MINER, P.A.  
AT NORTHBRIDGE CENTER  
515 N. FLAGLER DR., SUITE 1700  
WPB, FLORIDA

COPYRIGHT 2009  
THESE DRAWINGS ARE FOR THE EXCLUSIVE USE OF GLIDDEN, SPINA & PARTNERS, INC. AND MAY NOT BE REPRODUCED, REPRODUCED OR USED IN ANY MANNER WITHOUT THE EXPRESS WRITTEN CONSENT OF GLIDDEN SPINA & PARTNERS, INC. ALL RIGHTS RESERVED.

Sheet title: INT. ELEVATIONS	revisions:
file name: MKR&S-DTL5.DWG	
project no: 11198	drawn by: BUJOE
date: 11/19/11	checked by: KS

**A-2.0**

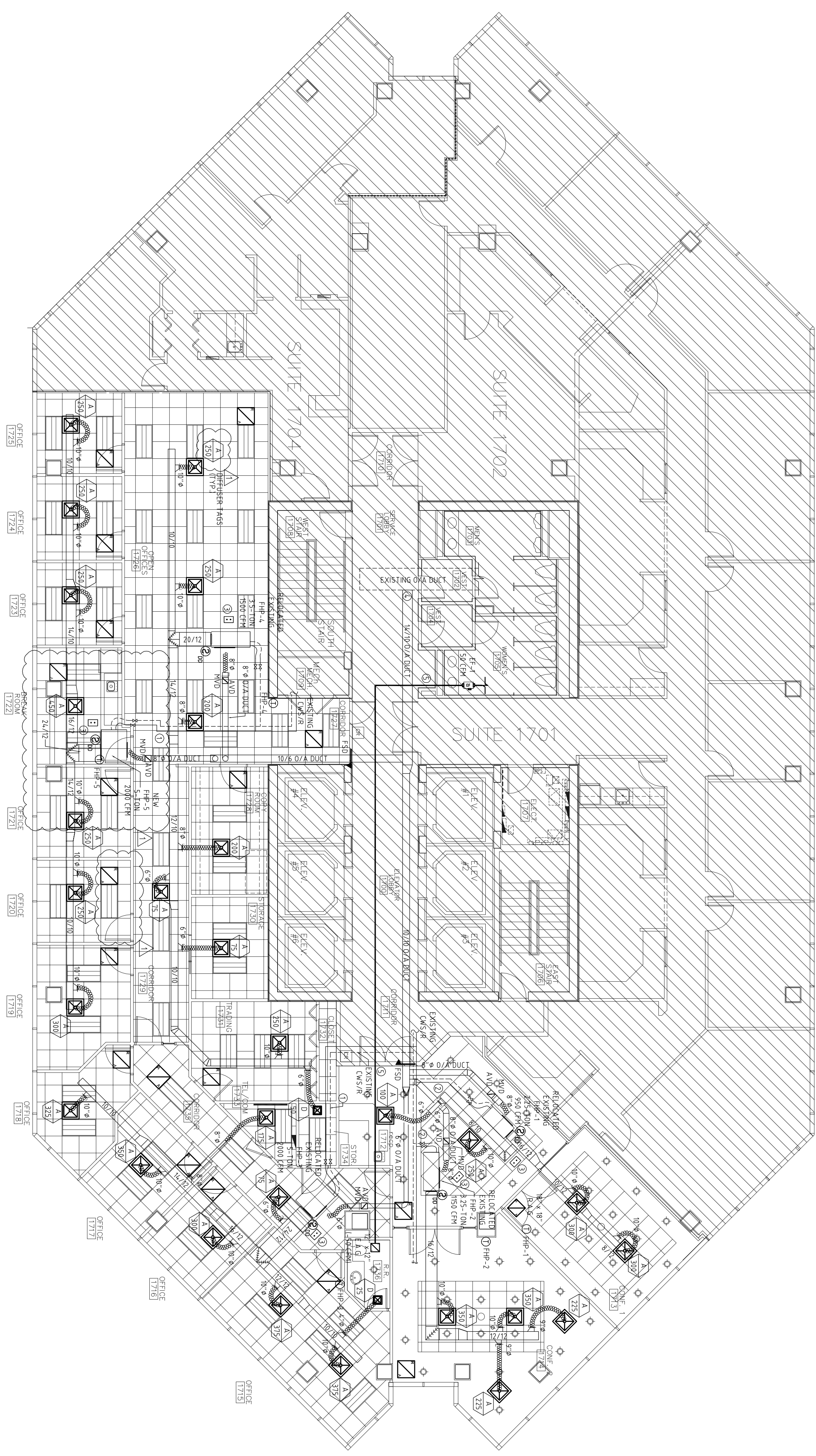












1 MECHANICAL PLAN  
SCALE: 1/8" = 1'-0"

NOTE TO CONTRACTOR  
CONTRACTOR TO COORDINATE ALL MECHANICAL, ELECTRICAL, PLUMBING, STRUCTURAL AND FIRE SPRINKLER WITH EXISTING CONDITIONS. REFER TO ARCHITECTURAL REFLECTED CEILING PLAN FOR FINAL LOCATION OF ALL DEVICES.

NOTE  
FENILING SPACE IS A COMMON PLENUM NO COMBUSTIBLE MATERIALS ALLOWED

- NOTE TO CONTRACTOR
1. CONTRACTOR TO COORDINATE ALL MECHANICAL, ELECTRICAL, PLUMBING, STRUCTURAL AND FIRE SPRINKLER WITH EXISTING CONDITIONS.
  2. REFER TO ARCHITECTURAL REFLECTED CEILING PLAN FOR FINAL LOCATION OF ALL DEVICES.
  3. COORDINATE IN FIELD ALL DUCT CROSSINGS, TURN DUCTS UP AND OVER EACH OTHER AS REQUIRED.
  4. ALL FIRE DAMPERS AND FIRE SMOKE DAMPERS SHALL BE INSTALLED PER MANUFACTURERS' INSTRUCTIONS.
  5. THERMOSTATS TO BE MOUNTED 4'-6" AFF. COORDINATE EXACT LOCATIONS WITH SWITCH LOCATIONS ON WALL PRIOR TO ROOFING.
  6. ALL FLEX DUCTS SHALL NOT EXCEED 6' IN LENGTH. CONTRACTOR TO VERIFY IN FIELD EXACT LENGTH FLEX DUCT AT AC MAXIMUM.

- KEY NOTES
1. EXTEND EXISTING GAS AND COND. LINES TO LOCATIONS SHOWN. VERIFY EXACT LOCATION IN FIELD.
  2. PROVIDE NEW 1/2" TAPS IN EXISTING GAS AND COND. LINES FOR NEW UNIT LOCATIONS. VERIFY EXACT LOCATION ON EXISTING LINES IN FIELD.
  3. CEILING MOUNT REMOTE ALARM TEST STATION CENTER IN CEILING TIE NUMBER IDENTIFICATION.
  4. NEW EXTERNALLY VENTILATED SHEET METAL RESTROOM 1736 TO NEW EF-1 ABOVE WOMEN'S RESTROOM. NEW EXHAUST DUCT TO EXISTING O/A DUCT. VERIFY EXACT LOCATION AND DUCT ROUTING IN FIELD WITH EXISTING CONDITIONS. NO FIRE DAMPERS OR 607'S EXCEPTION V AND 1736/35.

ABBREVIATIONS

A.F.F.	ABOVE FINISHED FLOOR
B.A.	RETURN AIR
R.C.	ROOF CAP
W.C.	WALL CAP
O/A	OUTSIDE AIR
S.A.	SHOULDER AIR
B.A.D.	RETURN AIR GRILLE
E.A.G.	EXHAUST AIR GRILLE
T.E.D.	TOILET EXHAUST DUCT
A.V.D.	AUTOMATED VOLUME DAMPER
F.H.D.	FLORIDA HEAT PUMP
A.H.U.	AIR HANDLER UNIT
W.H.U.	WALL MOUNTED AIR HANDLER UNIT
C.A.H.U.	CEILING MOUNTED AIR HANDLER UNIT
N.I.	NEW
E.I.	EXISTING TO BE REMAIN
R.E.P.	REPLACEMENT TO BE REPLACED
R.E.P.	EXISTING TO BE REPLACED

A/C LEGEND

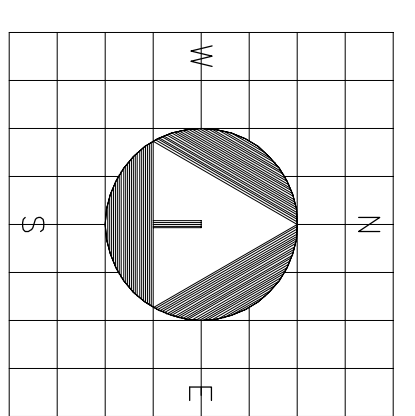
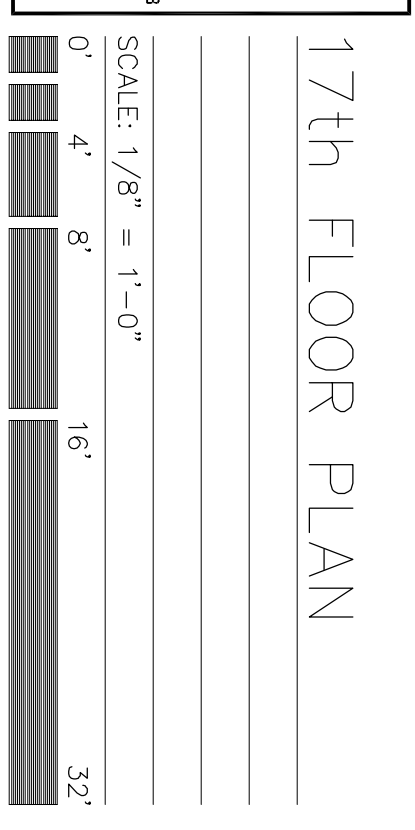
⊗	L.W. - DIFFUSER
⊖	Z.W. - DIFFUSER
↔	TRANSITION
⬆	MANUAL VOLUME DAMPER
⬆	FIRE DAMPER (F.D.)
⬆	THERMOSTAT
⬆	EXHAUST FAN
⬆	RETURN AIR GRILLE
⬆	EXHAUST TEST STATION
⬆	SMOKE DUCT DETECTOR
⬆	REMOTE ALARM TEST STATION
⬆	DESIGNER TYPE
⬆	CFM
⬆	FLORIDA HEAT PUMP (F.H.P.)
⬆	FLORIDA HEAT PUMP (H.H.P.)
⬆	CONDENSER WATER RETURN
⬆	CONDENSER WATER SUPPLY

NEW DUCT - WIDTH x DEPTH  
EXISTING DUCT - WIDTH x DEPTH  
NEW FLEX DUCT - DIAMETER

REVISION SET: 11/28/11  
PERMIT SET: 11/09/11

PRIOR TO SUBMITTING HIS BID, THE CONTRACTOR SHALL VERIFY ALL EXISTING CONDITIONS AND INFORM THE ARCHITECT AND THE ENGINEER OF ANY DISCREPANCY BETWEEN THESE DOCUMENTS AND THE EXISTING CONDITIONS AND HE SHALL INCLUDE THIS AND TO CORRECT THE SAME AS NEEDED. THE CONTRACTOR SHALL BE RESPONSIBLE FOR ANY ADDITIONAL COSTS RESULTING FROM VERIFIABLE EXISTING CONDITIONS DISCOVERED AFTER CONTRACT HAS BEEN AWARDED. NO CHANGES SHALL BE MADE TO THESE PLANS WITHOUT PRIOR APPROVAL FROM THE ENGINEER OF RECORD. ALL CHANGES SHALL BE SUBMITTED FOR REVIEW PRIOR TO INSTALLATION. NOT FOR BID UNTIL PERMIT HAS BEEN ISSUED.

17th FLOOR PLAN  
SCALE: 1/8" = 1'-0"  
0" 4" 8" 16" 32"



sheet title: MECHANICAL PLAN  
file name: 1421 M1.1(2).DWG  
project no: 11421  
date: 11/09/11  
drawn by: CI/SK/AB  
checked by: UI

revisions:  
1. 11/28/11 OWNER REV.

TENANT IMPROVEMENTS FOR:  
NOWLEN, HOLT & MINER, P.A.  
CERTIFIED PUBLIC ACCOUNTANTS  
AT NORTHBRIDGE CENTER  
515 N. FLAGLER DR., SUITE 1700  
WPB, FLORIDA

GS&P GLIDDEN • SPINA & PARTNERS  
ARCHITECTURE • INTERIOR DESIGN, INC.  
PHONE: 561.684.6844 • FAX: 561.684.5594 • E-MAIL: info@gsp-architects.com  
1401 FORUM WAY, SUITE 100 • WEST PALM BEACH, FLORIDA 33401  
FL License: #AA26001602  
Keith M. Spina #AR13419 Benjamin John Glidden, III #AR6536



**EXISTING WATER SOURCE HEAT PUMP DATA**

QTY	UNIT NO	HP/G	MODEL NO	TOTAL TONS	SEMIABLE	HEAT REJECT	FAN SECTION	GM/P.D. (FT)	EBR/COP	WATER TEMP	CWS & CUR
1	FHP-1	FHP	EM028 TONL	28.000	--	950	0.4	95	7.0/EXST	EXISTING	85
1	FHP-2	FHP	EM041 TONL	38.500	--	1150	0.4	150	9.0/EXST	EXISTING	85
1	FHP-3	FHP	EM042 TONL	60.000	--	2,800	0.4	80	15.0/EXST	EXISTING	85
1	FHP-4	FHP	EM042 TONL	41500	--	1500	0.4	100	10.0/EXST	EXISTING	85

**EXISTING WSPH ELECTRICAL DATA**

UNIT NO	V/F/Hz	COMPRESSOR	FLA	HP	FLA	HEATING	ELECTRIC	MIN CAPACITY	AMP HANDLER UNIT	MAX RISE
FHP-1	EXISTING	1	-	-	-	EXISTING	-	EXISTING	EXISTING	EXISTING
FHP-2	EXISTING	1	-	-	-	EXISTING	-	EXISTING	EXISTING	EXISTING
FHP-3	EXISTING	1	-	-	-	EXISTING	-	EXISTING	EXISTING	EXISTING
FHP-4	EXISTING	1	-	-	-	EXISTING	-	EXISTING	EXISTING	EXISTING

**WATER SOURCE HEAT PUMP DATA**

QTY	UNIT NO	HP/G	MODEL NO	TOTAL TONS	SEMIABLE	HEAT REJECT	FAN SECTION	GM/P.D. (FT)	EBR/COP	WATER TEMP	CWS & CUR
1	FHP-5	FHP	EC040 TONL	62.800	417/80	78,730	2,800	0.4	190	15.0/0.7	1327/4

**HP ELECTRICAL DATA**

UNIT NO	V/F/Hz	COMPRESSOR	FLA	HP	FLA	HEATING	ELECTRIC	MIN CAPACITY	AMP HANDLER UNIT	MAX RISE
FHP-5	460/3/50	1	9.7	10.0	31/6	25	19,000	-	-	14.7

NOTE: PER 2007 FBC CH. 13, SECTION 409.1.4.B.3.3 PROVIDE NOTICED SHUT OFF CONTROL DAMPERS ON DAMPERS ARE SUFFICIENT FOR LESS THAN 300 CFM OF OUTSIDE AIR.  
THIS PROJECT ALL AHU'S ARE PROVIDED WITH NOTICED O/A DAMPERS

**EXHAUST FAN DATA**

FAN #	MANUFACTURER	CFM	E.S.P. IN WG	RPM	- ROOF CURB TYPE	- DIRECT DRIVE	ELECTRIC V/F/Hz	OPERATING WEIGHT	ACCESS	- ROOF CURB TYPE	- BACKDRIFT DAMPER	- DISCONNECT SWITCH	- SPEED CONTROL	REMARKS
EF-1	GREENHECK SQ-65-G	50	0.250	1300	-	1300	120/1/60 1/50 HP	28.0 LBS	-	-	X	-	X	4 x 4" SHEET METAL X-SEEP PLANS FOR TERMINATION

**OUTSIDE AIR SCHEDULE per ASHRAE 62-1-2004**

SPACE	NET OCCUPIED AREA	OCCUPANCY PER 1000 SQFT	ESTIMATED OCCUPANCY	ACTUAL OCCUPANCY	VENTILATION RATE CFM PER PERSON - SQFT	VENTILATION REQUIRED	VENTILATION PROVIDED	NOTES
RECEPTION	445	30	13	-	5 - 0.06	65 - 25 - 90	185	FHP-1
CONFERENCE	285	50	15	-	5 - 0.06	75 - 18 - 93	-	

**OUTSIDE AIR SCHEDULE per ASHRAE 62-1-2004**

SPACE	NET OCCUPIED AREA	OCCUPANCY PER 1000 SQFT	ESTIMATED OCCUPANCY	ACTUAL OCCUPANCY	VENTILATION RATE CFM PER PERSON - SQFT	VENTILATION REQUIRED	VENTILATION PROVIDED	NOTES
CONFERENCE	455	50	23	-	5 - 0.06	115 - 28 - 113	150	FHP-2

**OUTSIDE AIR SCHEDULE per ASHRAE 62-1-2004**

SPACE	NET OCCUPIED AREA	OCCUPANCY PER 1000 SQFT	ESTIMATED OCCUPANCY	ACTUAL OCCUPANCY	VENTILATION RATE CFM PER PERSON - SQFT	VENTILATION REQUIRED	VENTILATION PROVIDED	NOTES
OFFICE	700	5	4	-	5 - 0.06	20 - 42 - 62	80	FHP-3
CONFOR	245	-	-	-	0.6	5	-	

NOTE: 1) OCCUPANT DENSITIES & VENTILATION RATES ARE BASED ON ASHRAE STANDARD 62.1, 2004 & 2006 SUPPLEMENT. PER SECTION 4.03, SUBSECTION 4.03.4 OF FLORIDA BUILDING CODE MECHANICAL 2007  
2) ACTUAL OCCUPANCY IS BASED ON EITHER SEATING ARRANGEMENT OR INFORMATION PROVIDED BY OWNER AND/OR ARCHITECT.

**OUTSIDE AIR SCHEDULE per ASHRAE 62-1-2004**

SPACE	NET OCCUPIED AREA	OCCUPANCY PER 1000 SQFT	ESTIMATED OCCUPANCY	ACTUAL OCCUPANCY	VENTILATION RATE CFM PER PERSON - SQFT	VENTILATION REQUIRED	VENTILATION PROVIDED	NOTES
OFFICE	710	5	4	-	5 - 0.06	20 - 43 - 63	130	FHP-5
BREAK ROOM	150	30	5	-	7.5 - 0.18	38 - 27 - 65	-	

NOTE: 1) OCCUPANT DENSITIES & VENTILATION RATES ARE BASED ON ASHRAE STANDARD 62.1, 2004 & 2006 SUPPLEMENT. PER SECTION 4.03, SUBSECTION 4.03.4 OF FLORIDA BUILDING CODE MECHANICAL 2007  
2) ACTUAL OCCUPANCY IS BASED ON EITHER SEATING ARRANGEMENT OR INFORMATION PROVIDED BY OWNER AND/OR ARCHITECT.

**AIR TERMINAL SCHEDULE (TITUS)**

SERVICE	SYSTEM	LOCATION	ACCESSORS	MANUFACTURE	MODEL	DESCRIPTION
A	SUPPLY	CEILING	-	TITUS	MODEL NO TMS-A-A	24" x 24" VAV
B	NOT USED	-	-	-	-	NEAR SITE TOYOTA LIFT ELEV
C	NOT USED	-	-	-	-	27" x 17"
D	SUPPLY	CEILING	-	TITUS	MODEL NO TMS-A-A	24" x 24" UNLESS OTHERWISE NOTED
EA	EXHAUST	CEILING	0.8.0	TITUS	MODEL NO PAR	24" x 24" UNLESS OTHERWISE NOTED
BA	RETURN	CEILING	0.8.0	TITUS	MODEL NO PAR	24" x 24" UNLESS OTHERWISE NOTED

NOTE: 1) AIR TERMINAL SCHEDULE TO BE WHITE FOR ALL DEVICES  
2) ALL DIFFUSER TYPES MUST NOT BE USED

**AIR CONDITIONING SPECIFICATION**

- A GENERAL
1. THE AIR CONDITIONING CONTRACTOR SHALL VERIFY THE JOB SITE BEFORE AND AFTER ALL CONDITIONS, INCLUDING EXISTING MATERIALS, EXISTING SYSTEMS AND CONDITIONS AS SHOWN AND INDICATED ON THE DRAWINGS AND INCLUDE THE JOB AND AREA AND ALL OF ALL EXISTING UTILITIES.
2. THE OWNER SHALL BE RESPONSIBLE FOR THE PROTECTION OF OTHER TRADES FROM THE PRODUCTION OF LONG LEAD ITEMS SO ASSOCIATED WITH FIELD CONDITIONS AS THE TIME OF BIDDING. THE AIR CONDITIONING CONTRACTOR SHALL BE RESPONSIBLE FOR THE DELIVERY OF ALL MATERIALS AND EQUIPMENT TO THE PROJECT SITE AND FOR THE PROTECTION OF OTHER TRADES FROM THE PRODUCTION OF LONG LEAD ITEMS SO ASSOCIATED WITH FIELD CONDITIONS AS THE TIME OF BIDDING.
3. IT SHALL BE THE RESPONSIBILITY OF THE AIR CONDITIONING CONTRACTOR TO PROVIDE ALL LABOR, MATERIALS, AND EQUIPMENT TO COMPLETE AND FULLY OPERATING SYSTEM. ALL EXISTING SYSTEMS SHALL BE REMOVED AND REINSTALLED AS REQUIRED TO PROVIDE A COMPLETE AND FULLY OPERATING SYSTEM. THE AIR CONDITIONING CONTRACTOR SHALL BE RESPONSIBLE FOR THE PROTECTION OF OTHER TRADES FROM THE PRODUCTION OF LONG LEAD ITEMS SO ASSOCIATED WITH FIELD CONDITIONS AS THE TIME OF BIDDING.
4. IF IT SHALL BE THE RESPONSIBILITY OF THE AIR CONDITIONING CONTRACTOR TO PROVIDE ALL LABOR, MATERIALS, AND EQUIPMENT TO COMPLETE AND FULLY OPERATING SYSTEM. THE AIR CONDITIONING CONTRACTOR SHALL BE RESPONSIBLE FOR THE PROTECTION OF OTHER TRADES FROM THE PRODUCTION OF LONG LEAD ITEMS SO ASSOCIATED WITH FIELD CONDITIONS AS THE TIME OF BIDDING.
5. THE AIR CONDITIONING CONTRACTOR SHALL BE RESPONSIBLE FOR THE PROTECTION OF OTHER TRADES FROM THE PRODUCTION OF LONG LEAD ITEMS SO ASSOCIATED WITH FIELD CONDITIONS AS THE TIME OF BIDDING.
6. AFTER THE SECTION AND PRIOR TO COMPLETION OF WORK, THE AIR CONDITIONING CONTRACTOR SHALL VERIFY THE PROTECTION OF OTHER TRADES FROM THE PRODUCTION OF LONG LEAD ITEMS SO ASSOCIATED WITH FIELD CONDITIONS AS THE TIME OF BIDDING.
7. THE AIR CONDITIONING CONTRACTOR SHALL BE RESPONSIBLE FOR THE PROTECTION OF OTHER TRADES FROM THE PRODUCTION OF LONG LEAD ITEMS SO ASSOCIATED WITH FIELD CONDITIONS AS THE TIME OF BIDDING.
8. THE AIR CONDITIONING CONTRACTOR SHALL BE RESPONSIBLE FOR THE PROTECTION OF OTHER TRADES FROM THE PRODUCTION OF LONG LEAD ITEMS SO ASSOCIATED WITH FIELD CONDITIONS AS THE TIME OF BIDDING.
9. THE AIR CONDITIONING CONTRACTOR SHALL BE RESPONSIBLE FOR THE PROTECTION OF OTHER TRADES FROM THE PRODUCTION OF LONG LEAD ITEMS SO ASSOCIATED WITH FIELD CONDITIONS AS THE TIME OF BIDDING.
10. THE AIR CONDITIONING CONTRACTOR SHALL BE RESPONSIBLE FOR THE PROTECTION OF OTHER TRADES FROM THE PRODUCTION OF LONG LEAD ITEMS SO ASSOCIATED WITH FIELD CONDITIONS AS THE TIME OF BIDDING.
11. THE AIR CONDITIONING CONTRACTOR SHALL BE RESPONSIBLE FOR THE PROTECTION OF OTHER TRADES FROM THE PRODUCTION OF LONG LEAD ITEMS SO ASSOCIATED WITH FIELD CONDITIONS AS THE TIME OF BIDDING.
12. THE AIR CONDITIONING CONTRACTOR SHALL BE RESPONSIBLE FOR THE PROTECTION OF OTHER TRADES FROM THE PRODUCTION OF LONG LEAD ITEMS SO ASSOCIATED WITH FIELD CONDITIONS AS THE TIME OF BIDDING.
13. THE AIR CONDITIONING CONTRACTOR SHALL BE RESPONSIBLE FOR THE PROTECTION OF OTHER TRADES FROM THE PRODUCTION OF LONG LEAD ITEMS SO ASSOCIATED WITH FIELD CONDITIONS AS THE TIME OF BIDDING.
14. THE AIR CONDITIONING CONTRACTOR SHALL BE RESPONSIBLE FOR THE PROTECTION OF OTHER TRADES FROM THE PRODUCTION OF LONG LEAD ITEMS SO ASSOCIATED WITH FIELD CONDITIONS AS THE TIME OF BIDDING.
15. THE AIR CONDITIONING CONTRACTOR SHALL BE RESPONSIBLE FOR THE PROTECTION OF OTHER TRADES FROM THE PRODUCTION OF LONG LEAD ITEMS SO ASSOCIATED WITH FIELD CONDITIONS AS THE TIME OF BIDDING.
16. THE AIR CONDITIONING CONTRACTOR SHALL BE RESPONSIBLE FOR THE PROTECTION OF OTHER TRADES FROM THE PRODUCTION OF LONG LEAD ITEMS SO ASSOCIATED WITH FIELD CONDITIONS AS THE TIME OF BIDDING.
17. THE AIR CONDITIONING CONTRACTOR SHALL BE RESPONSIBLE FOR THE PROTECTION OF OTHER TRADES FROM THE PRODUCTION OF LONG LEAD ITEMS SO ASSOCIATED WITH FIELD CONDITIONS AS THE TIME OF BIDDING.
18. THE AIR CONDITIONING CONTRACTOR SHALL BE RESPONSIBLE FOR THE PROTECTION OF OTHER TRADES FROM THE PRODUCTION OF LONG LEAD ITEMS SO ASSOCIATED WITH FIELD CONDITIONS AS THE TIME OF BIDDING.
19. THE AIR CONDITIONING CONTRACTOR SHALL BE RESPONSIBLE FOR THE PROTECTION OF OTHER TRADES FROM THE PRODUCTION OF LONG LEAD ITEMS SO ASSOCIATED WITH FIELD CONDITIONS AS THE TIME OF BIDDING.
20. THE AIR CONDITIONING CONTRACTOR SHALL BE RESPONSIBLE FOR THE PROTECTION OF OTHER TRADES FROM THE PRODUCTION OF LONG LEAD ITEMS SO ASSOCIATED WITH FIELD CONDITIONS AS THE TIME OF BIDDING.
21. THE AIR CONDITIONING CONTRACTOR SHALL BE RESPONSIBLE FOR THE PROTECTION OF OTHER TRADES FROM THE PRODUCTION OF LONG LEAD ITEMS SO ASSOCIATED WITH FIELD CONDITIONS AS THE TIME OF BIDDING.
22. THE AIR CONDITIONING CONTRACTOR SHALL BE RESPONSIBLE FOR THE PROTECTION OF OTHER TRADES FROM THE PRODUCTION OF LONG LEAD ITEMS SO ASSOCIATED WITH FIELD CONDITIONS AS THE TIME OF BIDDING.
23. THE AIR CONDITIONING CONTRACTOR SHALL BE RESPONSIBLE FOR THE PROTECTION OF OTHER TRADES FROM THE PRODUCTION OF LONG LEAD ITEMS SO ASSOCIATED WITH FIELD CONDITIONS AS THE TIME OF BIDDING.
24. THE AIR CONDITIONING CONTRACTOR SHALL BE RESPONSIBLE FOR THE PROTECTION OF OTHER TRADES FROM THE PRODUCTION OF LONG LEAD ITEMS SO ASSOCIATED WITH FIELD CONDITIONS AS THE TIME OF BIDDING.
25. THE AIR CONDITIONING CONTRACTOR SHALL BE RESPONSIBLE FOR THE PROTECTION OF OTHER TRADES FROM THE PRODUCTION OF LONG LEAD ITEMS SO ASSOCIATED WITH FIELD CONDITIONS AS THE TIME OF BIDDING.
26. THE AIR CONDITIONING CONTRACTOR SHALL BE RESPONSIBLE FOR THE PROTECTION OF OTHER TRADES FROM THE PRODUCTION OF LONG LEAD ITEMS SO ASSOCIATED WITH FIELD CONDITIONS AS THE TIME OF BIDDING.
27. THE AIR CONDITIONING CONTRACTOR SHALL BE RESPONSIBLE FOR THE PROTECTION OF OTHER TRADES FROM THE PRODUCTION OF LONG LEAD ITEMS SO ASSOCIATED WITH FIELD CONDITIONS AS THE TIME OF BIDDING.
28. THE AIR CONDITIONING CONTRACTOR SHALL BE RESPONSIBLE FOR THE PROTECTION OF OTHER TRADES FROM THE PRODUCTION OF LONG LEAD ITEMS SO ASSOCIATED WITH FIELD CONDITIONS AS THE TIME OF BIDDING.
29. THE AIR CONDITIONING CONTRACTOR SHALL BE RESPONSIBLE FOR THE PROTECTION OF OTHER TRADES FROM THE PRODUCTION OF LONG LEAD ITEMS SO ASSOCIATED WITH FIELD CONDITIONS AS THE TIME OF BIDDING.
30. THE AIR CONDITIONING CONTRACTOR SHALL BE RESPONSIBLE FOR THE PROTECTION OF OTHER TRADES FROM THE PRODUCTION OF LONG LEAD ITEMS SO ASSOCIATED WITH FIELD CONDITIONS AS THE TIME OF BIDDING.
31. THE AIR CONDITIONING CONTRACTOR SHALL BE RESPONSIBLE FOR THE PROTECTION OF OTHER TRADES FROM THE PRODUCTION OF LONG LEAD ITEMS SO ASSOCIATED WITH FIELD CONDITIONS AS THE TIME OF BIDDING.
32. THE AIR CONDITIONING CONTRACTOR SHALL BE RESPONSIBLE FOR THE PROTECTION OF OTHER TRADES FROM THE PRODUCTION OF LONG LEAD ITEMS SO ASSOCIATED WITH FIELD CONDITIONS AS THE TIME OF BIDDING.
33. THE AIR CONDITIONING CONTRACTOR SHALL BE RESPONSIBLE FOR THE PROTECTION OF OTHER TRADES FROM THE PRODUCTION OF LONG LEAD ITEMS SO ASSOCIATED WITH FIELD CONDITIONS AS THE TIME OF BIDDING.
34. THE AIR CONDITIONING CONTRACTOR SHALL BE RESPONSIBLE FOR THE PROTECTION OF OTHER TRADES FROM THE PRODUCTION OF LONG LEAD ITEMS SO ASSOCIATED WITH FIELD CONDITIONS AS THE TIME OF BIDDING.
35. THE AIR CONDITIONING CONTRACTOR SHALL BE RESPONSIBLE FOR THE PROTECTION OF OTHER TRADES FROM THE PRODUCTION OF LONG LEAD ITEMS SO ASSOCIATED WITH FIELD CONDITIONS AS THE TIME OF BIDDING.

REVISION SET: 11/28/11  
PERMIT SET: 11/09/11

PRIOR TO SUBMITTING HIS BID, THE CONTRACTOR SHALL VERIFY ALL EXISTING CONDITIONS AND INFORM THE ARCHITECT AND THE ENGINEER OF ANY DISCREPANCY BETWEEN THESE DOCUMENTS AND THE EXISTING CONDITIONS AND SHALL INCLUDE THIS INFORMATION IN HIS BID. THE CONTRACTOR SHALL BE RESPONSIBLE FOR ANY ADDITIONAL COSTS RESULTING FROM VERIFIABLE EXISTING CONDITIONS DISCOVERED AFTER CONTRACT HAS BEEN AWARDED. NO CHANGES SHALL BE MADE TO THESE PLANS WITHOUT PRIOR APPROVAL FROM THE ENGINEER OR ARCHITECT. ALL CHANGES SHALL BE SUBMITTED FOR REVIEW PRIOR TO INSTALLATION. NOT FOR BID UNIT, REMAIN HAS BEEN ISSUED.

**PRELIMINARY CONSULTING**  
1140 N.W. 86th Avenue, Suite 200  
Boca Raton, FL 33432  
TEL: (561) 991-9292 FAX: (561) 991-9898  
Handy B. Thibault, P.E., License #19915  
Luisa M. Irvine, P.E., License #21322  
Email: info@preliminaryconsulting.com

**MECHANICAL DATA & SPECS**  
SCALE: N.T.S.  
0" 4" 8" 16" 32"  
N  
E  
S  
W

**M2.1**

sheet title: MECHANICAL DATA & SPECS  
file name: 1421\_M1.(1,2).DWG  
project no: 11421  
date: 11/09/11  
drawn by: CWS/KAB  
checked by: UI  
revisions:  
1. 11/28/11 OWNER REV.

**TENANT IMPROVEMENTS FOR:**  
NOWLEN, HOLT & MINER, P.A.  
CERTIFIED PUBLIC ACCOUNTANTS  
AT NORTHBRIDGE CENTER  
515 N. FLAGLER DR., SUITE 1700  
WPB, FLORIDA

**GLIDDEN • SPINA & PARTNERS**  
ARCHITECTURE • INTERIOR DESIGN, INC.  
PHONE: 561.684.6844 • FAX: 561.684.5594 • E-MAIL: info@gsp-architects.com  
1401 FORUM WAY, SUITE 100 • WEST PALM BEACH, FLORIDA 33401  
FL License #AA26001602  
Keith M. Spina #AR13419 Benjamin John Glidden, III #AR6536



