

CEILING LEGEND		FIXTURE LEGEND	
	GWS CLG (VERIFY HGT)		NEW 2x4 15 S4W FLOOR LIGHT FIXTURE
	EXISTING CEILING TO REMAIN AS EXISTING		NEW HANG W/ 15W COMPACT FLUORESCENT BALL
	DOOR/WINDOW HEADER ABOVE		EMERGENCY LIGHTING
	EXISTING DOOR/WINDOW HEADER ABOVE		HANG SUPPLY GILL
	AREA OF SOFFIT ABOVE		HANG RETURN GILL

GENERAL BUILDING CODE ANALYSIS

APPLICABLE CODES:
FLORIDA BUILDING CODE 2007 W/ 2009 SUPPLEMENTS
FLORIDA BUILDING CODE 2007 - EXISTING BUILDING CODE - LEVEL 2

OCCUPANCY:
OCCUPANCY B - BUSINESS/RETAIL
CONSTRUCTION TYPE: 5B - UNSPRINKLERED

MEANS OF EGRESS:
MAXIMUM TRAVEL DISTANCE: 250' (FBC 2007: TABLE 1016.1)
MAXIMUM PATH OF EGRESS TRAVEL: 75' (FBC 2007: SEC. 1014.3)
MINIMUM CORRIDOR/EGRESS WIDTH: 44 INCHES (FBC 2007: SEC. 1017.2)
MINIMUM CLEAR OPENING OF EXIT DOORS: .20 INCHES PER OCCUPANT
MINIMUM CLEAR WIDTH OF STAIRS: .30 INCHES PER OCCUPANT

OCCUPANCY LOAD: (PER TABLE 1004.1.1)
ALLOWABLE OCCUPANCY BASED ON AREA: 100 GROSS
RETAIL AREA: 1.31 | 5 F. / 100 = 13 OCCUPANTS

ALLOWABLE OCCUPANCY BASED ON AREA: 196 OCCUPANTS

ALLOWABLE OCCUPANCY BASED ON EXIT ABILITY:
(1) 72" OF EGRESS WIDTH / 0.20" PER OCCUPANT = 170 OCCUPANTS
(1) 36" OF EGRESS WIDTH / 0.20" PER OCCUPANT = 350 OCCUPANTS
= 520 OCCUPANTS

THE MINIMUM PLANE SPREAD CLASSIFICATION OF INTERIOR FINISH OF EXISTING BUILDING SHALL BE BASED ON OCCUPANCY A-2 (SPRINKLERED) PER TABLE BELOW:

EXITS	ACCESSES	ROOMS & SPACES
B	B	C

(PER FBC TABLE 603.5)

LIGHTING CALCULATIONS

ALLOWABLE L.F.T.D. = 1.7 WS/F
APPLICABLE AREA: 1,189 S.F. X 1.7 = 2,011 W ALLOWABLE
2,011 S.F. / 84W PER LIGHT = 24 ALLOWABLE LIGHTS
15 (3 LAMP 2x4 FIXTURE - 84W EACH) 16 SHOWN
64x16 = 1344W USED
U-LINE T9 (1 LAMP 2x2 FIXTURE - 28W EACH) 4 SHOWN
28x4 = 112W USED

TYPICAL EXISTING EXIT CAPACITY

36" DOOR
EGRESS WIDTH = 34"
34" x 0.20 = 170 PEOPLE
EXIT CAPACITY = 170 PEOPLE

TYPICAL EXISTING EXIT CAPACITY

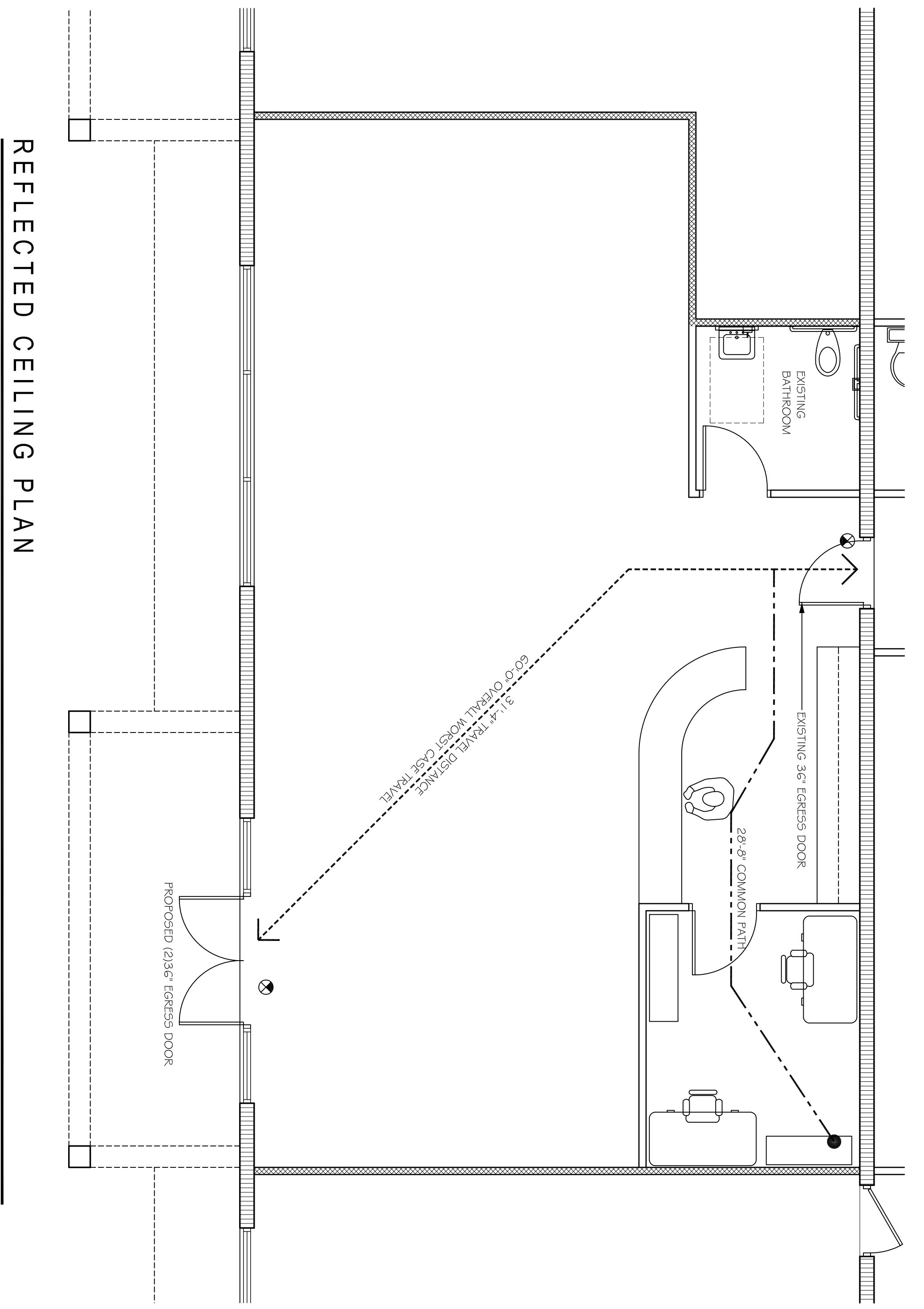
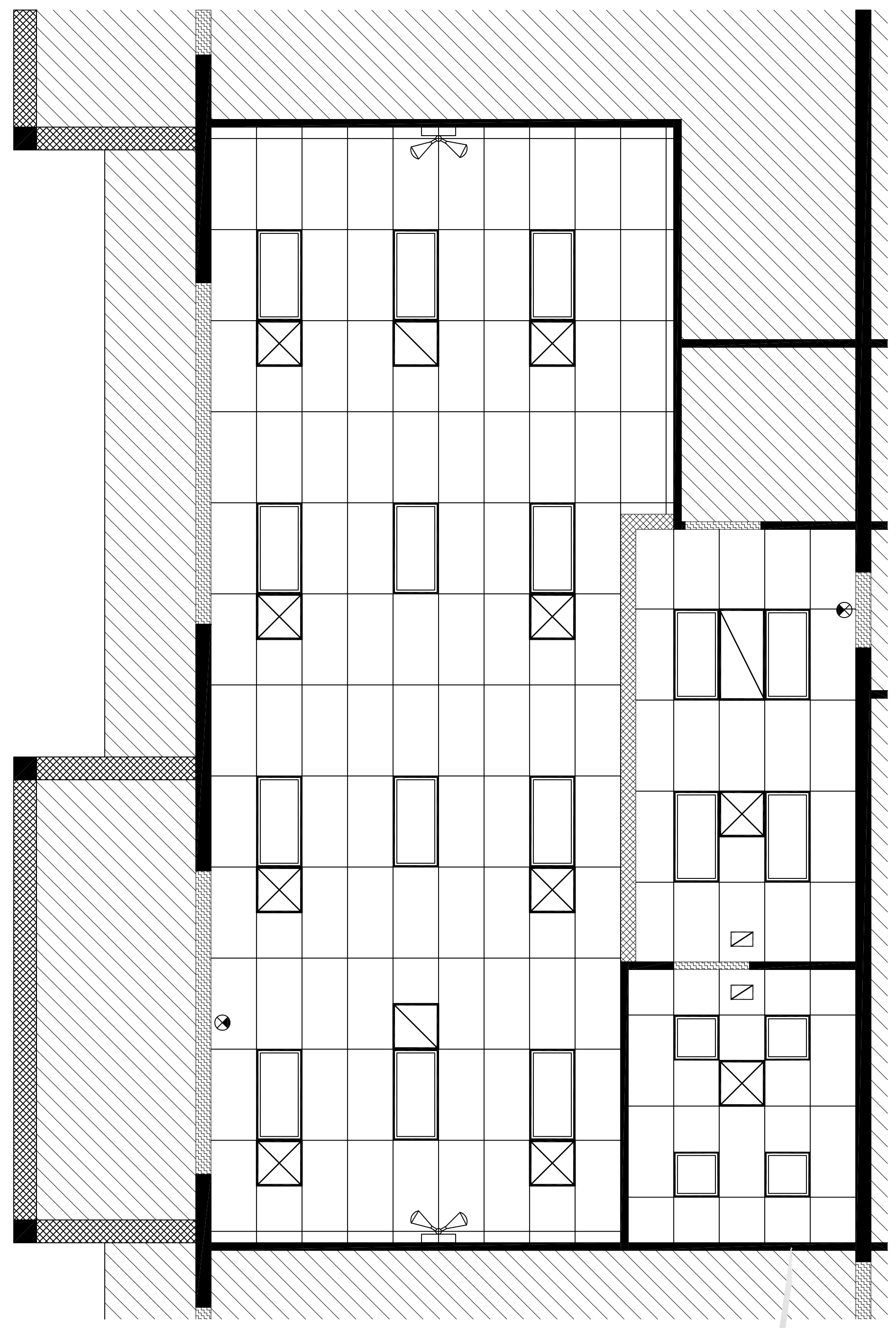
72" DOOR
EGRESS WIDTH = 70"
70" x 0.20 = 350 PEOPLE
EXIT CAPACITY = 350 PEOPLE

LIFE SAFETY LEGEND

- EXIT SIGN W/ DIRECTIONAL INDICATORS
- COMBINATION EXIT & EMERGENCY LIGHT WITH BATTERY BACKUP
- DENOTES 44" CLEAR TRAVEL DISTANCE OR ACCESS TO EXTERIOR OF BUILDING NOT TO EXCEED 250'-0" (FBC 07: 1016.1)
- DENOTES 44" CLEAR TRAVEL DISTANCE OR ACCESS TO EXTERIOR OF BUILDING NOT TO EXCEED 250'-0" (FBC 07: 1016.1)
- DENOTES 44" CLEAR TRAVEL DISTANCE OR ACCESS TO EXTERIOR OF BUILDING NOT TO EXCEED 250'-0" (FBC 07: 1016.1)
- DENOTES FIRE EXTINGUISHER W/ CURRENT TAG BY LICENSED FIRE EQUIP. CO. ON HOOK AND INTERVALS OF 75 MAX. 18" MAX.

EXIT SIGNS

ARROW POINT OF SHARPEst POSITION OF CLG. MOUNT EXIT LIGHTS/EXITING COMBO POINTS IN THE INTENDED DIRECTION OF TRAVEL TO THE NEAREST EXIT DISCHARGING TO EXTERIOR OF BUILDING (TYPICAL)



YATES ASSOCIATES ARCHITECTURE INC.
ARCHITECTURE • PLANNING • INTERIOR DESIGN

AA-26001673
215 SOUTH OAKLE, SUITE 500
WEST PALM BEACH, FL 33401
TEL: 561-653-8280 FAX: 561-653-8279
WWW.YATESARCHITECTURE.COM
EMAIL: KELLY@YATESARCHITECTURE.COM

DATE: MAY 15, 2011
JOB NO.: 11-04818
DESIGN BY: K.D.Y.
DRAWN BY: D.C.M.
APPROVED:
REVISIONS:

A NEW RETAIL STORE FOR:
GOLD COAST FEED
13501.SOUTHSHORE DRIVE
WELLINGTON
FLORIDA

PERMIT SUBMITTAL SET
5-24-11

SEAL
KELLY D. YATES
FLORIDA AR 13706

SHEET NO.
A-2
OF 5 SHEETS
Copyright © 2011 Yates Architecture Inc.