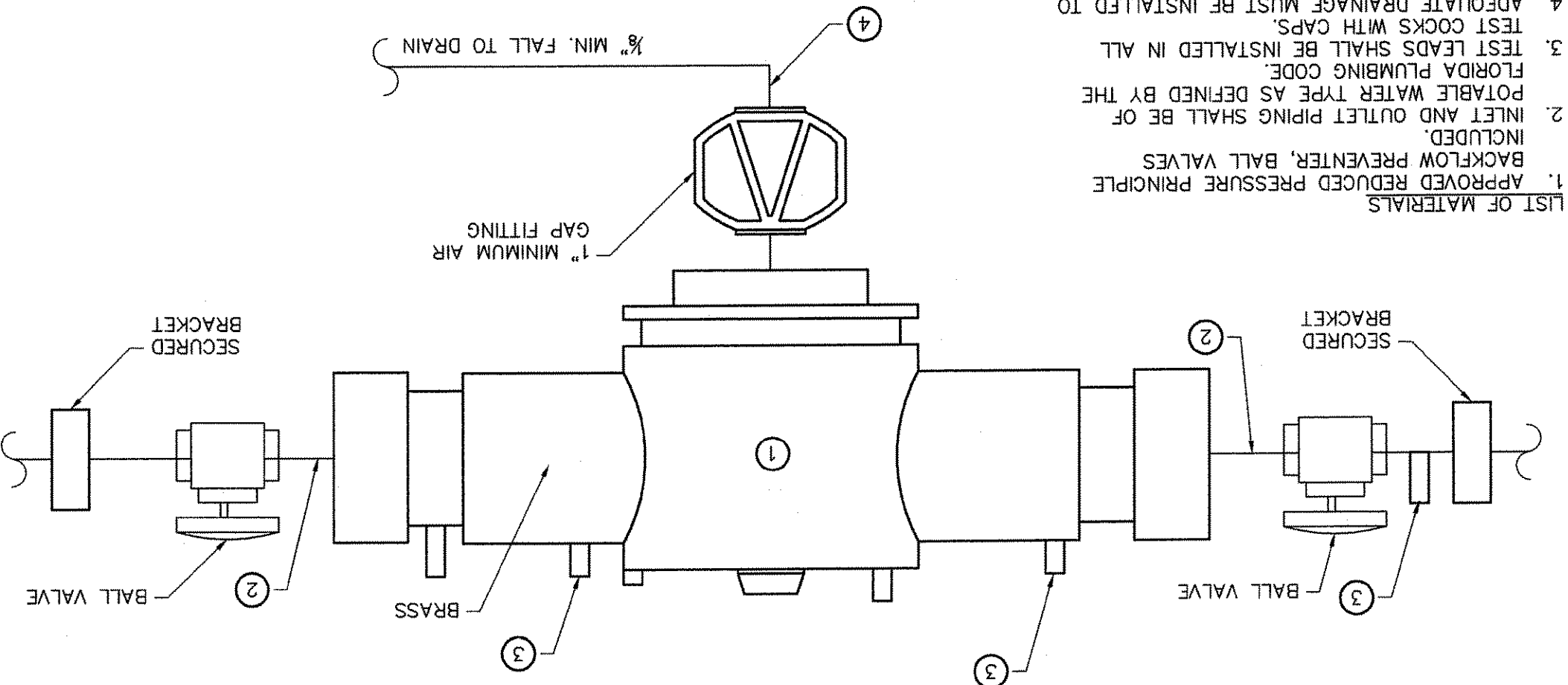


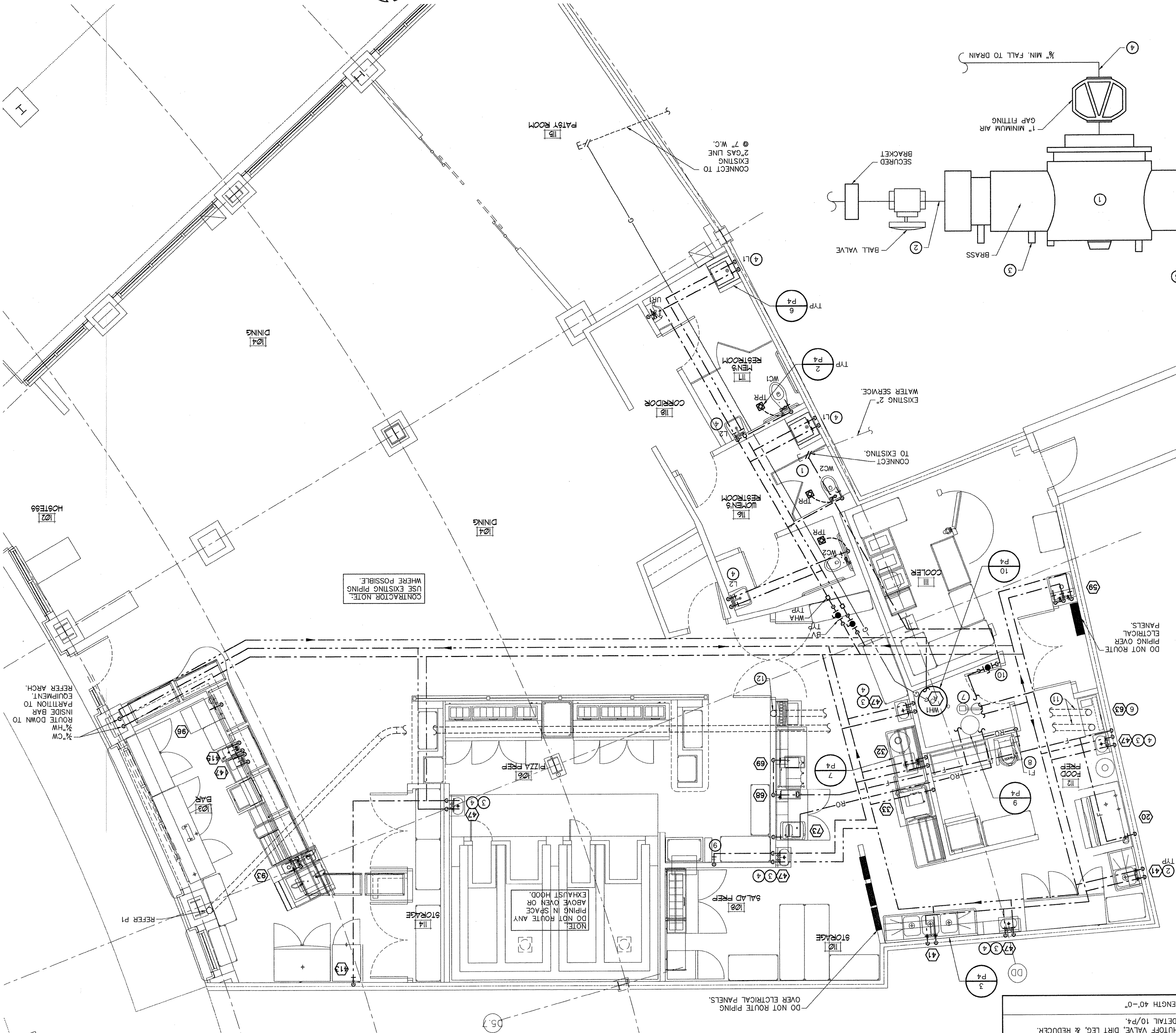
MARK#				
APPLNCE				
LOAD (BTU/H)				
SIZE				
REQUIREMENTS				
PROVIDE SHUTOFF VALVE, DIRT LEG, & REDUCER.				
REFER TO DETAIL 10/P4.				
1/2"				
HEATER				
120,000				
TOTAL GAS LOAD				
120,000				
MAXIMUM DEVELOPED LENGTH 40'-0"				

- LIST OF MATERIALS
1. APPROVED REDUCED PRESSURE PRINCIPLE BACKFLOW PREVENTER, BALL VALVES INCLUDED.
 2. INLET AND OUTLET PIPING SHALL BE OF FLORIDA PLUMBING CODE.
 3. TEST LEADS SHALL BE INSTALLED IN ALL TEST COCKS WITH CAPS.
 4. ADAPTE DRAINAGE MUST BE INSTALLED TO ACCOMMODATE RELIEF VALVE WITH MINIMUM 1" AIR GAP.
 5. NO COPPER PIPING SHALL BE INSTALLED ON CARBONATOR APPLICATIONS, DOWNSTREAM OF REDUCED PRESSURE PRINCIPLE BACKFLOW PREVENTER.

2 CARBONATED BFP DETAIL



1 DOMESTIC WATER PLAN



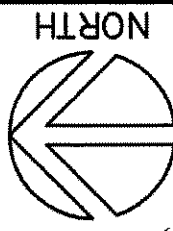
GENERAL NOTES

1. CONTRACTOR TO FIELD VERIFY LOCATION OF PRIMERS FOR RESTROOM FLOOR DRAINS, FIELD VERIFY LOCATION OF TRAP PRIMER VALVE IN ADEQUATELY SIZED LINE WITH CONSISTENT USAGE, PLACE VALVE IN ACCESSIBLE LOCATION FOR MAINTENANCE.
2. REFER TO ARCHITECTURAL DRAWINGS AND VENDOR/MANUFACTURER'S EQUIPMENT PRODUCT DATA AND SHOP DRAWINGS FOR FIXTURE MOUNTING DIMENSIONS.
3. PROVIDE ZURN SHOCKTROL WATER HAMMER ARRESTORS AND INSTALL PER MANUFACTURER'S INSTRUCTIONS.
4. PROVIDE VACUUM BREAKERS AT INDIVIDUAL EQUIPMENT WHERE PIPING IS SUBJECT TO THE POSSIBILITY OF LOW HEAD BACK PRESSURE OR BACK SPONGE & PROVIDE CHECK VALVES FOR LOW HAZARD BACKFLOW PREVENTION & CROSS CONNECTION.
5. ALL INSULATED DOMESTIC WATER PIPING SHALL BE RUN IN CONDITIONED SPACE WHERE POSSIBLE. PIPING SUBJECT TO EXPOSURE TO NON-CONDITIONED AREAS SHALL BE RUN WITHIN INSULATION PER SPECS.
6. COORDINATE LOCATION OF EQUIPMENT, DRAINS, RUN-OUT SIZES, SERVICE REQUIREMENTS, ARCHITECTURAL DRAWINGS.
7. THE GENERAL CONTRACTOR IS RESPONSIBLE FOR ALL COSTS ASSOCIATED WITH UTILITY SERVICES.
8. ALL VALVES AND EQUIPMENT SHALL BE INSTALLED WITH CLEAR ACCESS.

KEYNOTES

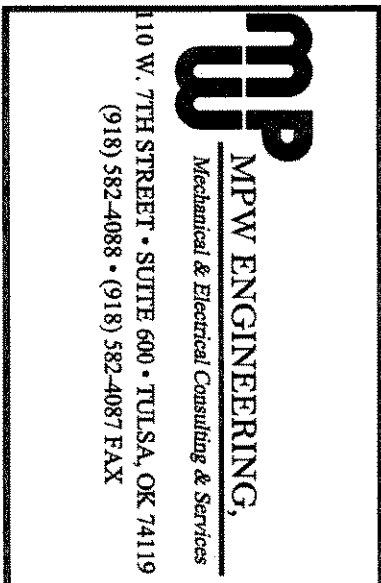
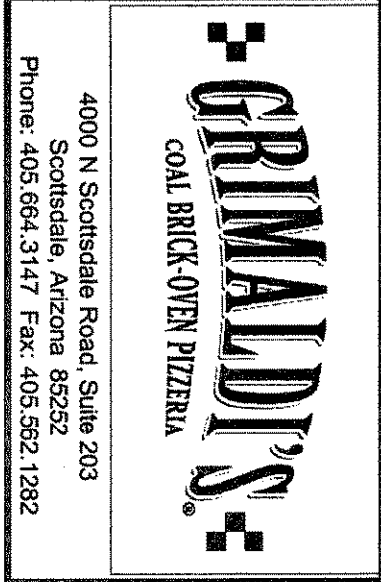
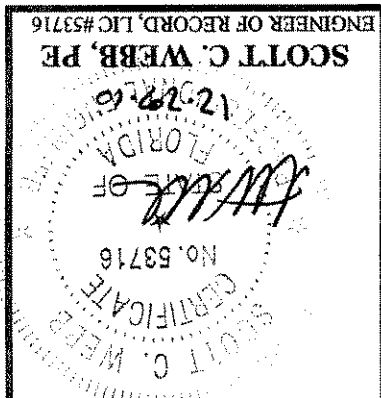
1. COORDINATE WITH LANDLORD FOR CURRENT WATER METER LOCATION AND CONNECTION REQUIREMENTS.
2. FOOD SERVICE EQUIPMENT NUMBER, REFER TO ARCHITECTURAL DRAWINGS, KITCHEN EQUIPMENT SCHEDULE.
3. HAND SINK: PROVIDE 1 1/2" WASTE AND VENT, 1/2" CW, AND 1/2" HW. PROVIDE P-TRAP AND SUPPLY STOPS WITH ESCUTCHEON PLATES, REFER TO ARCHITECTURAL AND KITCHEN SHEETS FOR MOUNTING AND STUB OUT HEIGHTS.
4. PROVIDE THERMOSTATIC MIXING VALVE (TMV) SET TO 110° OUTLET TEMPERATURE.
5. PROVIDE CHECK VALVE, WATTS SERIES 7 OR EQUAL, FOR ALL SINK FAUCET HOT AND COLD WATER SUPPLY LINES.
6. PROVIDE BACKFLOW PREVENTER WATTS MODEL 98D OR EQUIVALENT ON CARBONATED WATER SUPPLY. REF. DETAIL #2/P2.
7. CONNECT EXISTING 2" COLD WATER SUPPLY TO WATER SOFTENER-FILTER SYSTEM, SEE DETAIL #3/P4.
8. WATER FROM REVERSE OSMOSIS SYSTEM FOR DOUGH MIXER FAUCET (F1). USE PEX PIPE FOR RO WATER, NO COPPER.
9. PROVIDE 3/4" CW DOWN TO WOODFORD MODEL #25 FAUCET, GLEASON REEL 3/4" X 75' WITH SPRING REWIND HOSE, AND S&H 6 GPM FOG NOZZLE FOR FIRE SUPPRESSION.
10. PROVIDE MAIN WATER SHUT OFF VALVE AT EYE LEVEL, LABEL "MAIN WATER SHUT OFF".
11. ROUTE 6" PVC CONDUIT FROM BAG-N-BOX TO BEVERAGE COUNTER THRU CEILING SPACE.
12. AT BEVERAGE COUNTER ROUTE 6" CONDUIT DOWN TO BELOW COUNTER AND ROUTE TO BEVERAGE DISPENSER.

CONTRACTOR NOTE:
USE EXISTING PIPING
WHERE POSSIBLE.



1/4"=1'-0"

NTS



DOCUMENTS FOR:
**DOWNTOWN at the GARDENS
GRIMALDI'S PIZZERIA**
11701 LAKE VICTORIA GARDENS AVE., STE 3101
PALM BEACH GARDENS, FL 33410

Revision	No.	Date	Description

Project: DOWNTOWN at the GARDENS
Drawn: SA
Issue Date: 12/28/2010

Sheet Title: DOMESTIC WATER PLAN
Sheet No: P2