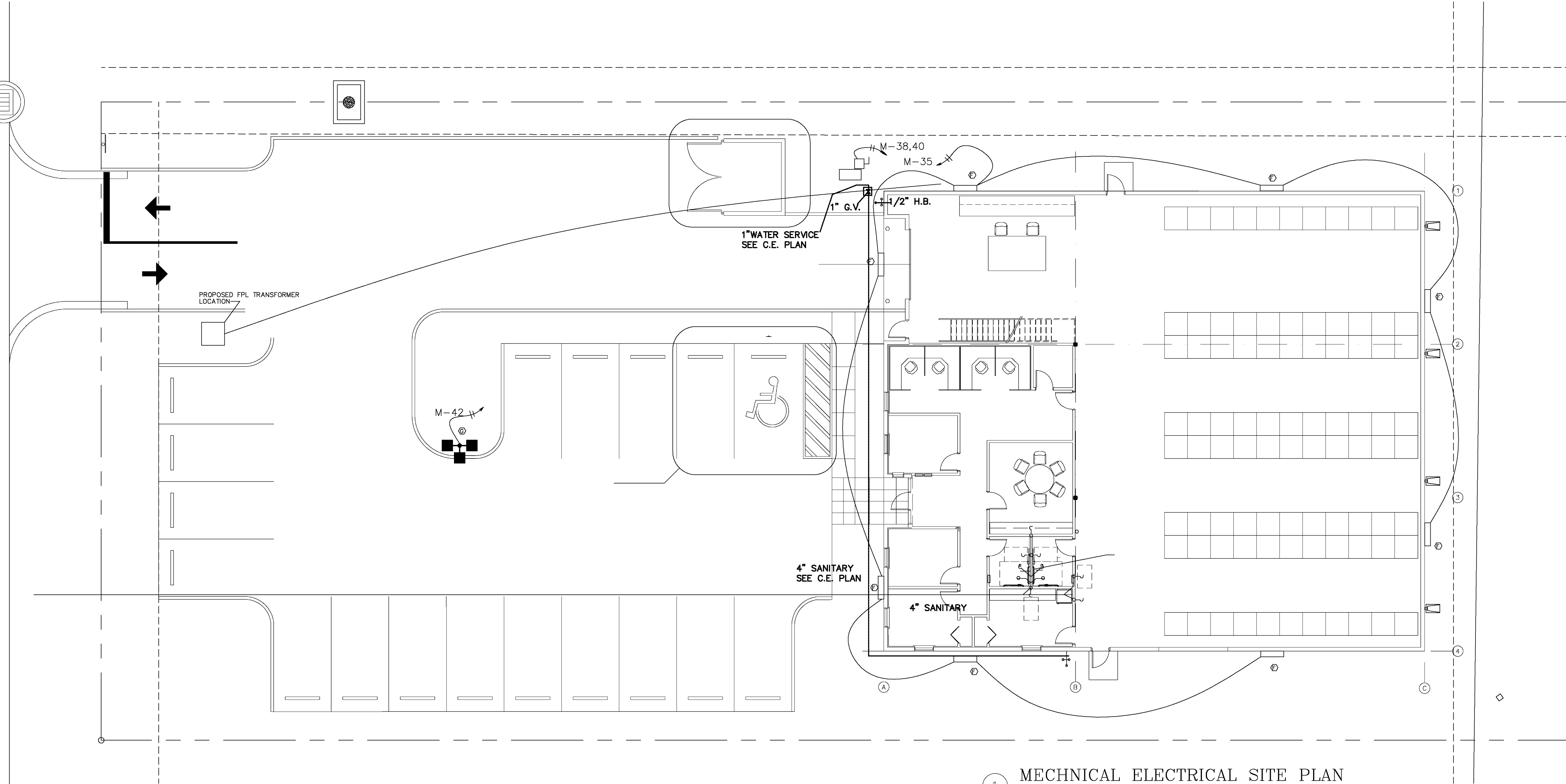


H A V E R H I L L B U S I N E S S P A R K W A Y



1 MECHANICAL ELECTRICAL SITE PLAN  
 1" = 10'-0"

**ALAN STRASSLER**  
 ARCHITECTS, INC.  
 8805 NORTH MILITARY TRAIL, SUITE 201-D  
 PALM BEACH GARDENS, FLORIDA 33410  
 TEL. 561-853-1100 FAX. 561-853-1101  
 CERTIFICATE OF AUTHORIZATION #A00000010  
 ALAN W. STRASSLER #7405

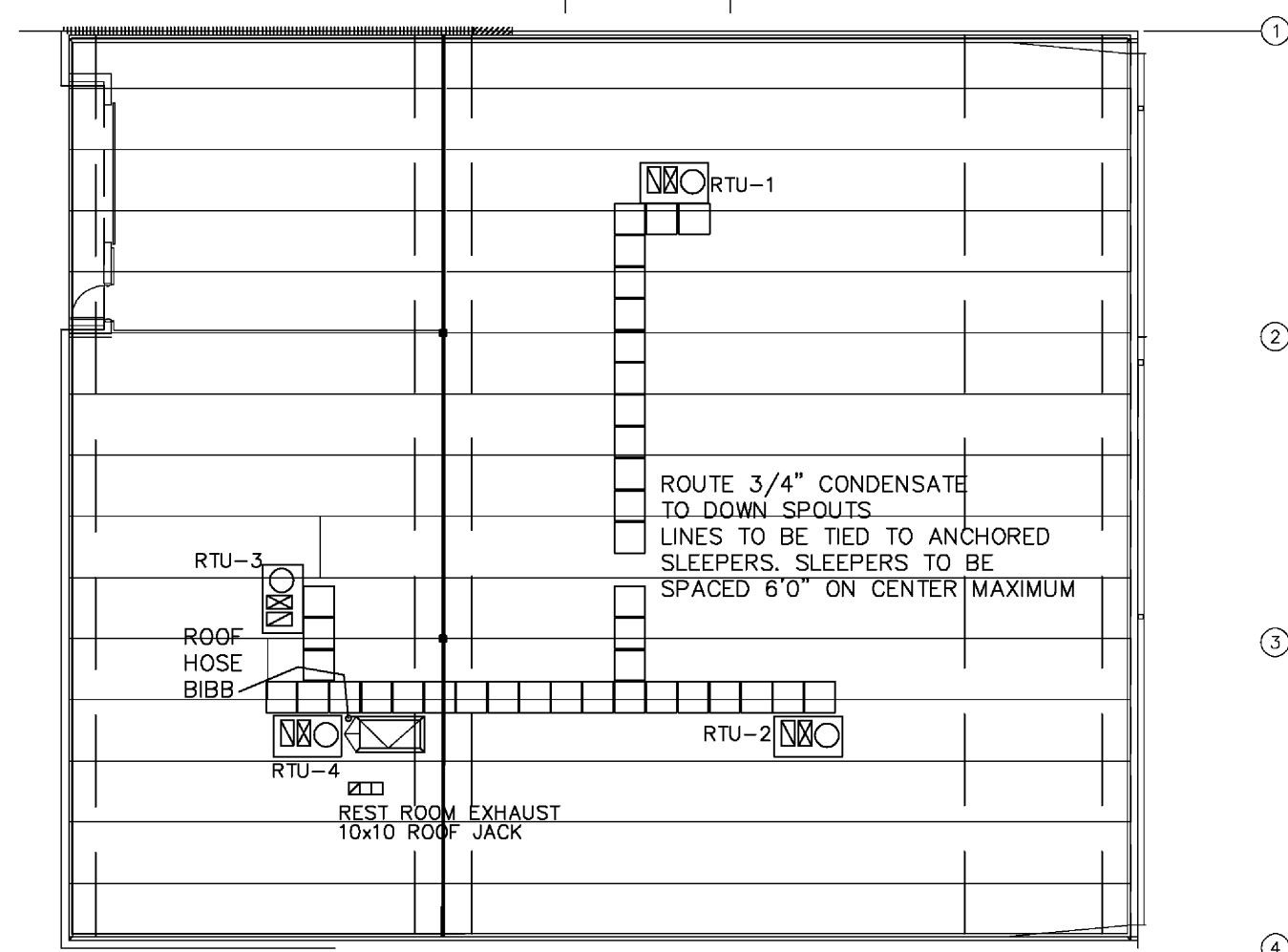
SEAL

MEDICAL TECHNOLOGY PRODUCTS LOT #7  
 H A V E R H I L L B U S I N E S S P A R K R I V I E R A B E A C H , F L O R I D A  
 H A V E R H I L L R O A D  
 ME SITE PLAN 1/8" = 1'-0"

DRAWN BY: AIC  
 PROJ. NO. 10025  
 REVISED:

CHANE, INC.  
 CONSULTING ENGINEERS  
 2705 PARK STREET  
 LAKE WORTH, FL 33460  
 E-MAIL CHANEINC@AOL.COM  
 TEL. 561-586-4003 FAX. 561-586-5688  
 CERTIFICATE OF AUTHORIZATION #2559  
 ARNOLD I. CHANE, PE #10024  
 DAVID R. JONES, PE #41042  
 HOWARD L. CHANE, PE #22467

SHEET:  
 ME1



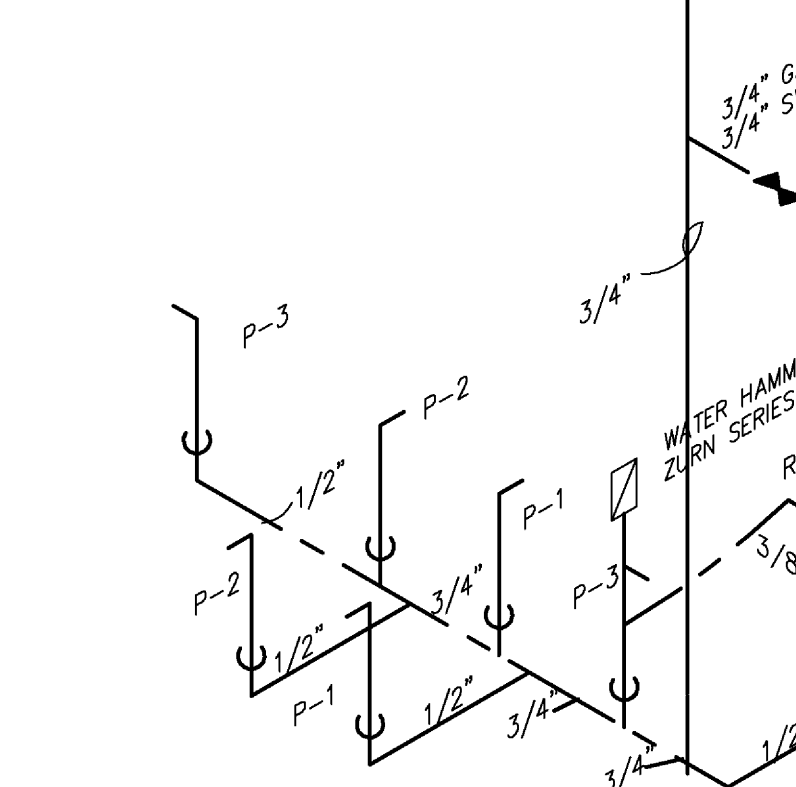
ROOF PLAN  
SCALE: 1/16" = 1'-0"

**PLUMBING NOTES**

1. ALL WORKMANSHIP AND MATERIALS SHALL BE IN STRICT ACCORDANCE WITH APPLICABLE LOCAL CODES, RULES AND ORDINANCES.
2. PLUMBING CONTRACTOR SHALL VISIT THE JOB SITE AND THOROUGHLY FAMILIARIZE HIMSELF WITH ALL EXISTING CONDITIONS.
3. ALL MATERIALS SHALL BE NEW.
4. REQUIRED INSURANCE SHALL BE PROVIDED BY THE PLUMBING CONTRACTOR FOR PROTECTION AGAINST PUBLIC LIABILITY AND PROPERTY DAMAGE FOR THE DURATION OF THE WORK.
5. PLUMBING CONTRACTOR SHALL SECURE AND PAY FOR ALL PERMITS, FEES, INSPECTIONS AND TESTS. PLUMBING CONTRACTOR TO OBTAIN PERMIT AND APPROVED SUBMITTALS PRIOR TO BEGINNING WORK OR CROSSING EQUIPMENT. PLUMBING CONTRACTOR MUST BE PRESENT FOR ALL INSPECTIONS OF HIS WORK BY REGULATORY AUTHORITIES.
6. DRAWINGS ARE DIAGRAMMATIC, DO NOT SCALE FOR THE EXACT LOCATION OF FIXTURES, PIPING AND EQUIPMENT.
7. ALL WORK SHALL BE COORDINATED WITH OTHER TRADES TO AVOID INTERFERENCE WITH THE PROGRESS OF CONSTRUCTION. REPORT ANY DISCREPANCY TO ENGINEER/ARCHITECT PRIOR TO BEGINNING CONSTRUCTION.
8. VERIFY LOCATION, SIZE, DIRECTION OF FLOW AND INVERTS OF ALL EXISTING UTILITIES PRIOR TO BEGINNING OF CONSTRUCTION. ADVISE ENGINEER OF ANY DISCREPANCIES.
9. DOMESTIC WATER PIPE SHALL BE TYPE "L" COPPER WITH NO LEAD SOLDER.
10. SOIL, WASTE, VENT, & STORM PIPING SHALL BE CAST IRON OR SCH 40 PVC IF CODE PERMITS. GAS PIPING SHALL BE RIGID GALVANIZED SCHEDULE 40 METAL.
11. DIELECTRIC COUPLINGS ARE REQUIRED BETWEEN ALL DISSIMILAR METAL IN PIPING AND EQUIPMENT CONNECTIONS.
12. ISOLATE COPPER PIPE FROM HANGER OR SUPPORTS WITH ISOLATOR PAD.
13. ALL FIRE RATED FLOOR AND WALL PENETRATIONS SHALL BE PROPERLY PROTECTED BY FILLING VOIDS BETWEEN PIPE AND WALL/FLOOR SLEEVES.
14. PLUMBING CONTRACTOR SHALL GUARANTEE ALL MATERIALS AND WORKMANSHIP FREE FROM DEFECTS FOR A PERIOD OF NOT LESS THAN ONE (1) YEAR FROM DATE OF ACCEPTANCE BY OWNER. CORRECTION OF ANY DEFECTS SHALL BE COMPLETED WITHOUT ADDITIONAL CHARGE AND SHALL INCLUDE REPLACEMENT OR REPAIR OF ANY OTHER PHASE OF THE INSTALLATION WHICH MAY HAVE BEEN DAMAGED.
15. PROVIDE ACCESS PANELS FOR ALL CONCEALED VALVES. ACCESS PANELS IN RATED WALLS MUST MAINTAIN THE SAME RATING AND MUST MATCH THE FINISH OF THE WALL IN WHICH IT IS INSTALLED.
16. PROVIDE CHROME PLATED COMBINATION COVER PLATE AND CLEAN OUT PLUG OR ACCESS PANEL FOR ALL WALL CLEAN OUT.
17. ALL CONTROL VALVES SHALL BE TAGGED AND MARKED. A REPRODUCIBLE DIAGRAM LOCATING ALL VALVES SHALL BE PROVIDED FOR OWNER/OPERATOR.
18. ALL CONDENSATE DRAIN PIPING SHALL BE SCH 40 PVC WITH 1/2" THICK TYPE "G" CELLULAR FOAM INSULATION, K=0.28 MINIMUM.
19. TEST DOMESTIC WATER TO HYDROSTATIC PRESSURE OF 100 PSI AND HOLD FOR 24 HOURS. PROVIDE ALL NECESSARY TEST EQUIPMENT. PERFORM TEST IN PRESENCE OF OWNER'S REPRESENTATIVE. ENTER TEST RESULTS IN GENERAL CONTRACTOR JOB LOG. STERILIZE WATER PIPING WITH SOLUTION CONTAINING NOT LESS THAN 50 PARTS PER MILLION OF CHLORINE AND ALLOW TO REMAIN IN SYSTEM FOR A PERIOD OF EIGHT (8) HOURS. FLUSH SYSTEM AFTER STERILIZATION. ALL COST FOR STERILIZATION AND EQUIPMENT SHALL BE PROVIDED BY THE CONTRACTOR.
20. PROVIDE 1" (R=4.0 MIN.) INSULATION FOR ALL HOT WATER LINES.
21. ALL FIXTURES MUST BE PROVIDED WITH READILY ACCESSIBLE STOPS AND APPROPRIATELY MARKED ACCESS PANELS. COORDINATE LOCATIONS WITH GENERAL CONTRACTOR PRIOR TO INSTALLATION.
22. PROVIDE ANGLE STOPS ON ALL WATER SERVICE LINES TO FIXTURES FOR INDIVIDUAL SHUTOFF.
23. THE DESIGN & INSTALLATION OF THE PLUMBING SYSTEM & ALL APPURTENANCES SHALL COMPLY STRICTLY WITH THE APPLICABLE PROVISIONS OF THE FLORIDA BUILDING PLUMBING CODE & THE LOCAL AMENDMENTS TO THE FLORIDA BUILDING PLUMBING CODE.

**SANITARY ISOMETRIC**

SCALE: NTS



**WATER ISOMETRIC**

SCALE: NTS



**PLUMBING FIXTURE SCHEDULE**

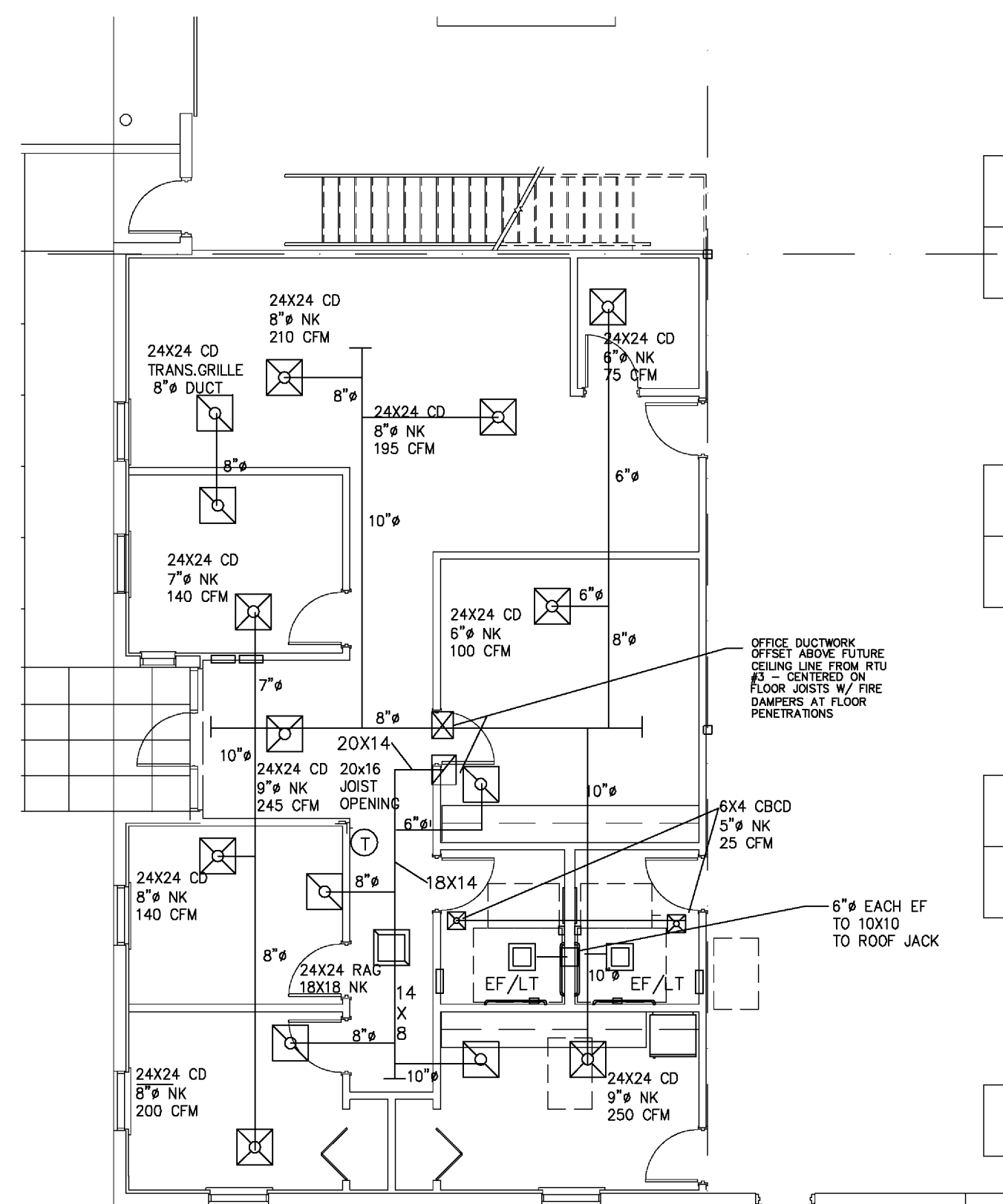
MARK	FIXTURE	DESCRIPTION	TRIM	REMARKS
1	H. C. W. C.	A/S 2386.010 CABET-3 1.6 GPF	OPEN FRONT SEAT, ELONGATED BOWL.	HANDICAP 16.5" HIGH.
2	H. C. LAVATORY	A/S 0321.026 DECLTYN	A/S 1480.100 FAUCET WITH LEVER ADA HANDLE. PROVIDE WITH GRID DRAIN AND 0.3 GPM FLOW RESTRICTOR. PROVIDE ADA PROTECTION FOR EXPOSED HOT WATER & DRAIN PIPING.	WALL HUNG AT ADA HEIGHT.
3	SINGLE SS SINK	ELKAY LRAD-1919-6.3" D	ELKAY LK500 GODSENECK FAUCET WITH LEVER ADA HANDLES. PROVIDE LK50 CUP STRAINER. PROVIDE ADA PROTECTION FOR EXPOSED HOT WATER & DRAIN PIPING.	TOP MOUNT. ADA COMPLIANT.
4	EW SINGLE	PRAC	SANDSTONE FINISH.	REFRIGERATED. ADA COMPLIANT.
5	MEP SINK TRAP STANDARD	A/S 7692.008 LAKEVELL	A/S 8340.243 SERVICE FAUCET WITH VACUUM BREAKER & A/S 7798.030 TRAP STANDARD & A/S 8379.018 RIM GUARD.	22"X18"X11" H STANDARD MOUNTED.
6	HOSE BIBB	ARROWHEAD 266022C	INTEGRAL VACUUM BREAKER.	NO-KINK HOSE BIBB.
7	FLOOR DRAIN	JOSAM 30000-A	CAST IRON BODY. NIKALEY STRAINER TOP.	ROUNDED TOP.

**DRENCH SHOWER & EYE WASH**

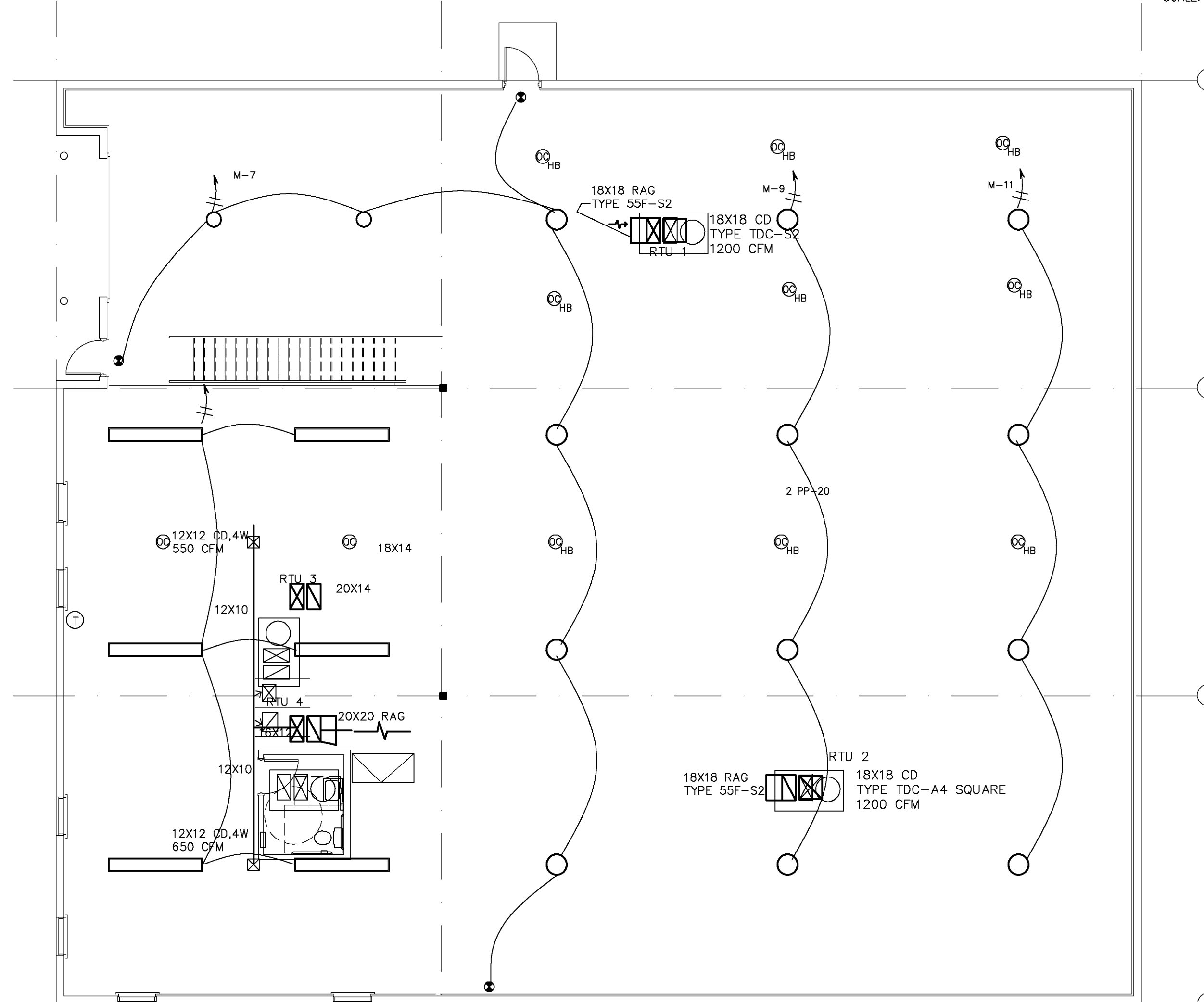
SCALE: NTS



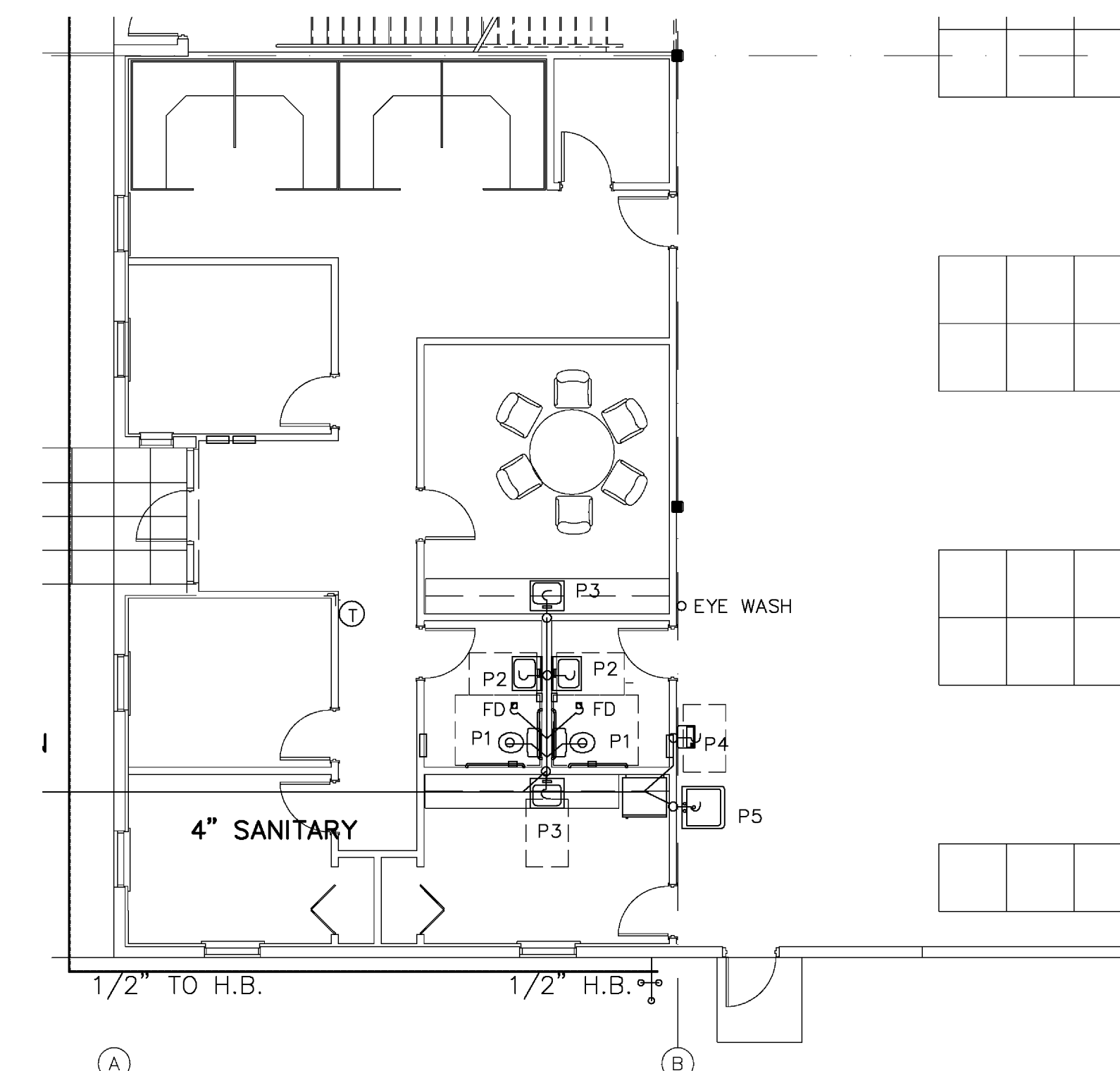
PLUMBING NOTES SCHEDULES



OFFICE HVAC PLAN  
SCALE: 1/8" = 1'-0"



WAREHOUSE HVAC PLAN  
SCALE: 1/8" = 1'-0"



OFFICE PLUMBING PLAN  
SCALE: 1/8" = 1'-0"

ALAN STRASSLER ARCHITECTS, INC.  
8805 NORTH WILMOTY TRAIL, SUITE 201-D  
PALM BEACH GARDENS, FLORIDA 33410  
(561) 627-0008 FAX (561) 624-0720  
ALAN M. STRASSLER #7405

MEDICAL TECHNOLOGY PRODUCTS  
HAVERHILL BUSINESS PARK  
HAVERHILL ROAD  
RIVIERA BEACH, FLORIDA  
LOT #7  
1/8" = 1'-0"

DATE: 10/10/10  
DRAWN BY: AIC  
PROJ. NO. 10025  
REVISED:

CHANE, INC.  
CONSULTING ENGINEERS  
2705 PARK STREET  
LAKE WORTH, FL 33460  
E-MAIL CHANEINC@AOL.COM  
TEL 561-586-4003 FAX 561-586-5688  
CERTIFICATE OF AUTHORIZATION #2559  
ARNOLD I. CHANE, PE #10024  
DAVID R. JONES, PE #41042  
HOWARD L. CHANE, PE #22467

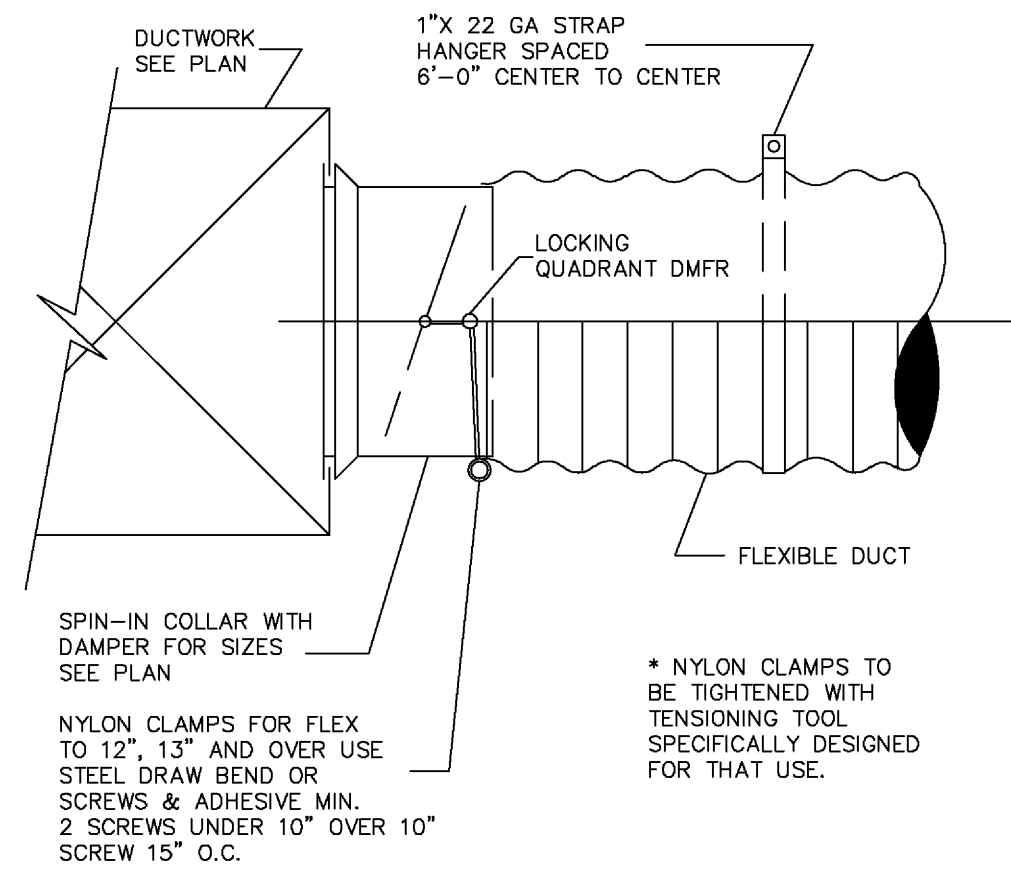
SHEET:  
M1

**GENERAL MECHANICAL NOTE**

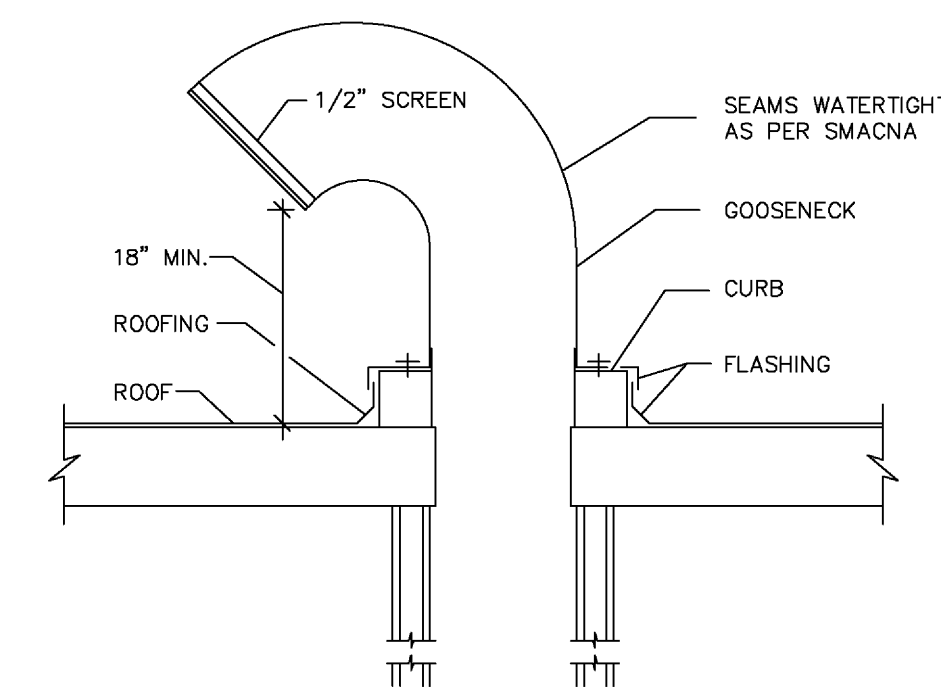
1. VISIT THE SITE BEFORE SUBMITTING A BID. DETERMINE THE CHARACTERISTICS OF EXISTING FACILITIES WHICH WILL AFFECT PERFORMANCE OF THE WORK, BUT WHICH ARE NOT SHOWN ON THE DRAWINGS OR THE SPECIFICATIONS.
2. SHOP DRAWINGS OR FULLY DESCRIPTIVE CATALOG DATA SHALL BE SUBMITTED BY THE CONTRACTOR FOR ALL KINDS OF MATERIAL AND EQUIPMENT FURNISHED AND INSTALLED UNDER THIS CONTRACT. THE CONTRACTOR SHALL SUBMIT TO THE ARCHITECT A SUFFICIENT NUMBER OF COPIES OF ALL SUCH SHOP DRAWINGS OR CATALOG DATA TO PROVIDE HIM WITH AS MANY REVIEWED COPIES AS HE MAY NEED, PLUS TWO (2) COPIES FOR RETENTION BY THE ARCHITECTS AND ENGINEERS.
3. ALL CUTTING, PATCHING, STRUCTURAL STEEL, WEATHER PROOFING, PAINTING, AND WALL OPENINGS SHALL BE BY THE GENERAL CONTRACTOR.
4. ALL OPENINGS IN BUILDING STRUCTURE, FOR DUCTWORK, PIPING, ETC. TO BE 1/2" LARGER (ON ALL SIDES) THAN THE OUTSIDE DIMENSIONS. FILL VOIDS WITH FIRE RETARDANT SILICONE FOAM (I.E. CHASE-FOAM CTC PR-855 BY CHASE TECHNOLOGY CORP.).
5. CONTRACTOR SHALL GUARANTEE ALL MATERIALS AND WORKMANSHIP FREE FROM DEFECTS FOR A PERIOD OF NOT LESS THAN ONE (1) YEAR FROM DATE OF ACCEPTANCE. CORRECTION OF ANY DEFECTS SHALL BE COMPLETED WITHOUT ADDITIONAL CHARGE AND SHALL INCLUDE REPLACEMENT OR REPAIR OF ANY OTHER PHASE OF THE INSTALLATION WHICH MAY HAVE BEEN DAMAGED.

**GENERAL HVAC NOTES**

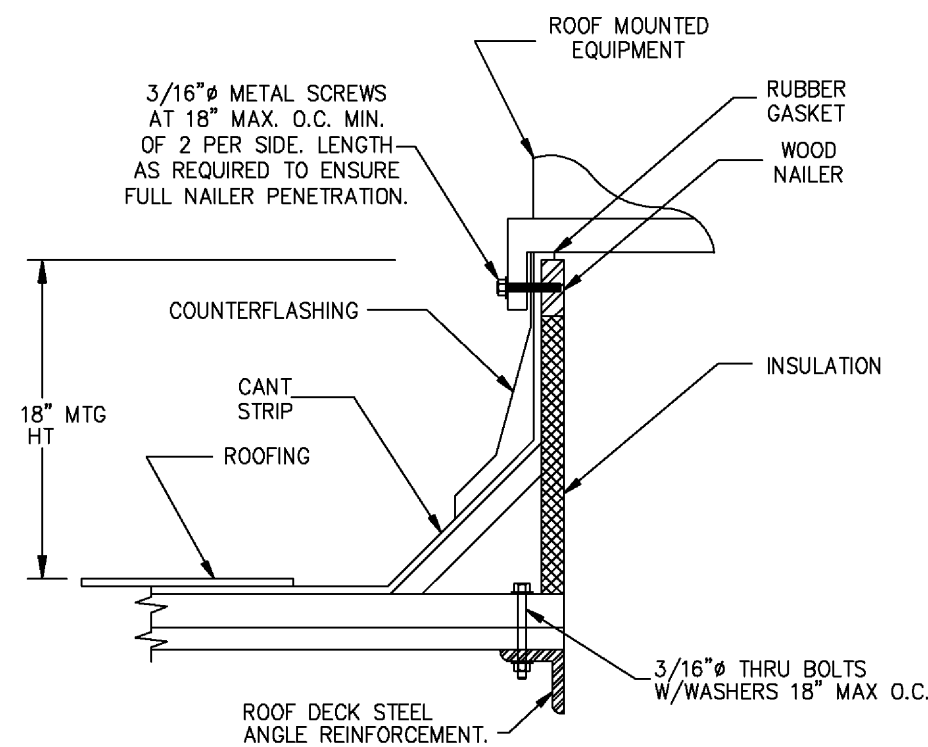
1. VISIT THE SITE PRIOR TO SUBMITTING A BID. DETERMINE THE CHARACTERISTICS OF EXISTING FACILITIES WHICH WILL AFFECT PERFORMANCE OF THE WORK, BUT WHICH ARE NOT SHOWN ON THE DRAWINGS.
2. PROVIDE ALL LABOR PERMITS, MATERIAL, TOOLS, SUPPLIES, EQUIPMENT TO INSTALL A COMPLETE AND OPERATING AIR CONDITIONING SYSTEM. INSTALLATION SHALL BE IN ACCORDANCE WITH LOCAL CODES.
3. PAY ALL COSTS OF PERMIT INSPECTIONS AND ALL OTHER COSTS INCIDENTAL TO THE COMPLETION AND TESTING OF THIS WORK.
4. CONTRACTOR SHALL SUBMIT, FOR APPROVAL FIVE (5) COPIES OF MANUFACTURERS DRAWINGS FOR EACH PIECE OF EQUIPMENT AND CONTROLS INCLUDED IN CONTRACT.
5. ALL CONDITIONED AIR DUCTWORK SHALL BE FIBERGLASS, R=6.0 MIN. ALL EXHAUST & OUTSIDE AIR DUCTWORK SHALL BE GALVANIZED STEEL. ALL BENDS SHALL HAVE TURNING VANES. CONTRACTOR SHALL VERIFY ALL CLEARANCES AND ADJUST FOR FIELD CONDITIONS PRIOR TO CONSTRUCTING ANY DUCTWORK. ALL DUCT SIZES ARE CLEAR INSIDE DIMENSIONS. INSTALL ALL DUCTWORK PER APPROPRIATE SMACNA STANDARD.
6. THE CONTRACTOR SHALL FURNISH A WRITTEN WARRANTY THAT SHALL GUARANTEE ALL WORKMANSHIP AND MATERIALS FOR ONE (1) YEAR FROM THE DATE OF FINAL ACCEPTANCE BY THE ARCHITECT. ANY BREAK-DOWN OCCURRING IN THE FIRST YEAR SHALL BE REPAIRED AT NO COST TO THE OWNER. A/C COMPRESSORS SHALL HAVE A 5 YEAR GUARANTEE.
7. PROVIDE & INSTALL ALL CONTACTORS, RELAYS, AND CONTROLS.
8. HVAC CONTRACTOR SHALL PROVIDE A TEST AND BALANCE REPORT FOR ALL MECHANICAL SYSTEMS AND SHALL INCLUDE AIR QUANTITIES FOR ALL SUPPLY GRILLS, RETURN GRILLS, AND EXHAUST GRILLS AND THE LEAVING AND ENTERING AIR TEMPERATURE (°F) FROM AT EACH EVAPORATOR COIL. INCLUDE ALL VOLTAGE AND AMPERAGE FOR EACH MOTOR. THE REPORT SHALL BE DONE BY AN INDEPENDANT TAB CONTRACTOR LICENSED BY THE STATE OF FLORIDA AND SUBMITTED TO THE ARCHITECT.
9. ALL AIR DEVICES (DIFFUSERS, REGISTERS AND GRILLES) SHALL BE ALL ALUMINUM CONSTRUCTION WITH EXPOSED SURFACE OF WHITE BAKED ENAMEL FINISH OR AS SPECIFIED BY ARCHITECT. DEVICES SHALL BE TITUS OR METALAIR.
10. ALL BRANCH TAKE OFFS TO BE PROVIDED W/ MANUAL VOLUME DAMPERS. ALL ELBOWS AND TEES MUST BE FURNISHED W/TURNING VANES. PROVIDE MANUAL VOLUME DAMPERS WITH EXTRACTOR AT ALL FLEX TAKE OFFS.
11. PROVIDE NEW FILTERS FOR ALL AIR HANDLERS BEFORE STARTING THEM. REPLACE FILTERS PRIOR TO FINAL ACCEPTANCE BY OWNER.
12. FIRE DAMPERS SHALL BE STYLE B WITH THE BLADES OUT OF THE AIRSTREAM. DAMPERS FOR RECTANGULAR DUCTS SHALL BE EQUAL TO RUSKIN #0-BD2 WITH 1 1/2 HOUR RATING & DAMPERS FOR ROUND DUCT SHALL BE EQUAL TO RUSKIN #0-BD2-OR WITH 1 1/2 HOUR RATING.
13. ALL PENETRATIONS OF FIRE RESISTIVE ASSEMBLIES INCLUDING FLOOR ASSEMBLIES SHALL BE PROTECTED BY AN APPROVED THROUGH STOP ASSEMBLY AND INSPECTED FOR COMPLIANCE PRIOR TO CLOSE IN. THE CONTRACTOR MUST VISIT THE SITE & REVIEW THE ARCHITECTURAL PLANS PRIOR TO BID TO LOCATE ALL NEW FIRE WALLS & ANY EXISTING MECHANICAL DUCTWORK, PIPING, ETC. THAT WILL REQUIRE NEW FIRE DAMPERS OR THROUGH STOPS. ALL COSTS SHALL BE INCLUDED IN THE BID.
14. THE DESIGN & INSTALLATION OF THE MECHANICAL SYSTEMS & ALL APPURTENANCES SHALL COMPLY STRICTLY WITH THE APPLICABLE PROVISIONS OF THE FLORIDA BUILDING MECHANICAL CODE & THE LOCAL AMENDMENTS TO THE FLORIDA BUILDING MECHANICAL CODE.
15. PROVIDE A 10 FOOT MINIMUM CLEARANCE FROM ALL VENTS THROUGH ROOF (VTR) AND EXHAUST FANS TO OUTSIDE AIR INTAKES.
16. ALL STORAGE ROOMS, TOILETS, ETC., WILL HAVE UNDERCUT DOORS TO PROVIDE VENTILATION REQUIRED WHEN DOOR OR TRANSFER GRILLES ARE NOT SHOWN.
17. A/C CONTRACTOR SHALL BE RESPONSIBLE TO COORDINATE HIS WORK FOR SIZE, LOCATION, CLEARANCE, ACCESS AND ELECTRICAL CHARACTERISTICS WITH ALL OTHER TRADES AND TO PROVIDE SHOP DRAWINGS TO THE ENGINEER FOR REVIEW BEFORE INSTALLATION OF DUCTWORK OR EQUIPMENT. SHOP DRAWINGS WILL INCLUDE BEAM OR STRUCTURE ELEVATION & REQUIRED EQUIPMENT ACCESS AREAS.
18. COORDINATE LOCATION OF CEILING DIFFUSERS, GRILLES AND REGISTERS IN THE FIELD WITH LIGHTS AND ARCHITECTURAL ELEMENTS.
19. COORDINATE LOCATION OF AHU'S, THERMOSTATS, FANS AND DUCTWORK WITH BUILDING STRUCTURE AND OTHER TRADES SO THAT NO INTERFERENCES OCCUR.
20. MECHANICAL PLANS IN GENERAL, ARE DIAGRAMMATIC IN NATURE, AND ARE TO BE READ IN CONJUNCTION WITH ARCHITECTURAL, PLUMBING, ELECTRICAL AND STRUCTURAL PLANS. DUCT BENDS AND TRANSITIONS WILL BE REQUIRED TO PROVIDE AND INSTALL A COMPLETE FUNCTIONAL SYSTEM AND SHALL BE PROVIDED BY THE CONTRACTOR AT NO ADDITIONAL COST TO THE OWNER.
21. FAN DRIVES SHALL BE ADJUSTED TO DELIVER THE SPECIFIED CFM AGAINST THE ACTUAL STATIC PRESSURE OF THE INSTALLATION.
22. ALL OUTSIDE EQUIPMENT SHALL BE SECURED TO WITHSTAND 140 M.P.H. WINDS.
23. ALL REFRIGERANT LINES SHALL BE INSTALLED PER MANUFACTURERS RECOMMENDATIONS. MATERIAL SHALL BE TYPE "L" COPPER INSULATED WITH 3/4" ARMAFLEX. EXTERIOR ARMAFLEX SHALL BE COATED PER MANUFACTURERS RECOMMENDATIONS.
24. ALL UNITS SHALL BE PROVIDED W/ HONEYWELL ELECTRONIC PROGRAMMABLE THERMOSTATS.
25. ALL CONDENSATE DRAIN PIPING SHALL BE SCH 40 PVC WITH 1/2" THICK TYPE "G" CELLULAR FOAM INSULATION, K=0.28 MINIMUM.



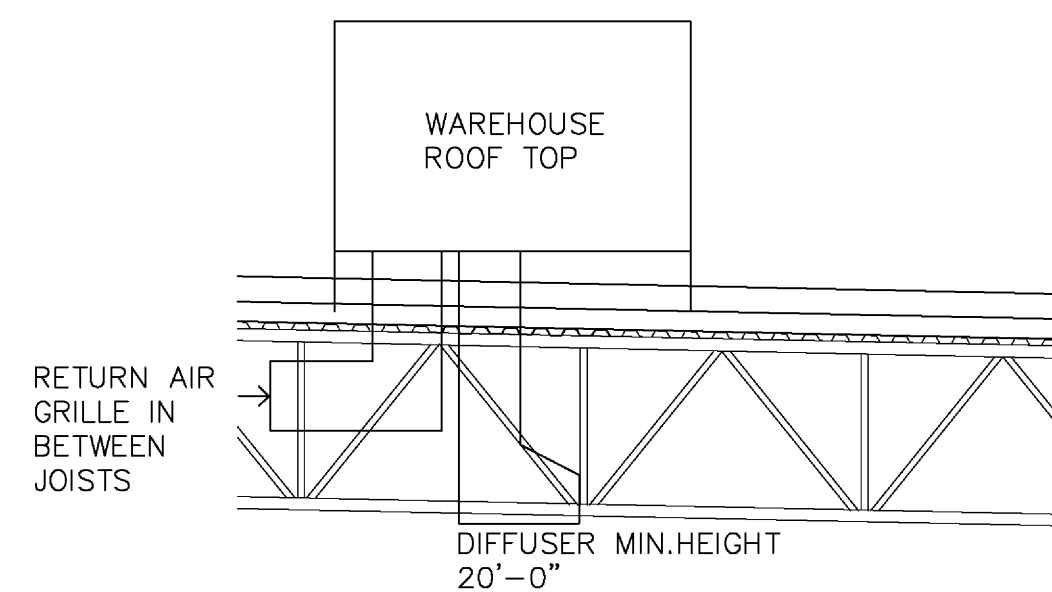
**DUCT TAKE-OFF DETAIL - NTS**



**GOOSENECK DETAIL - NTS**

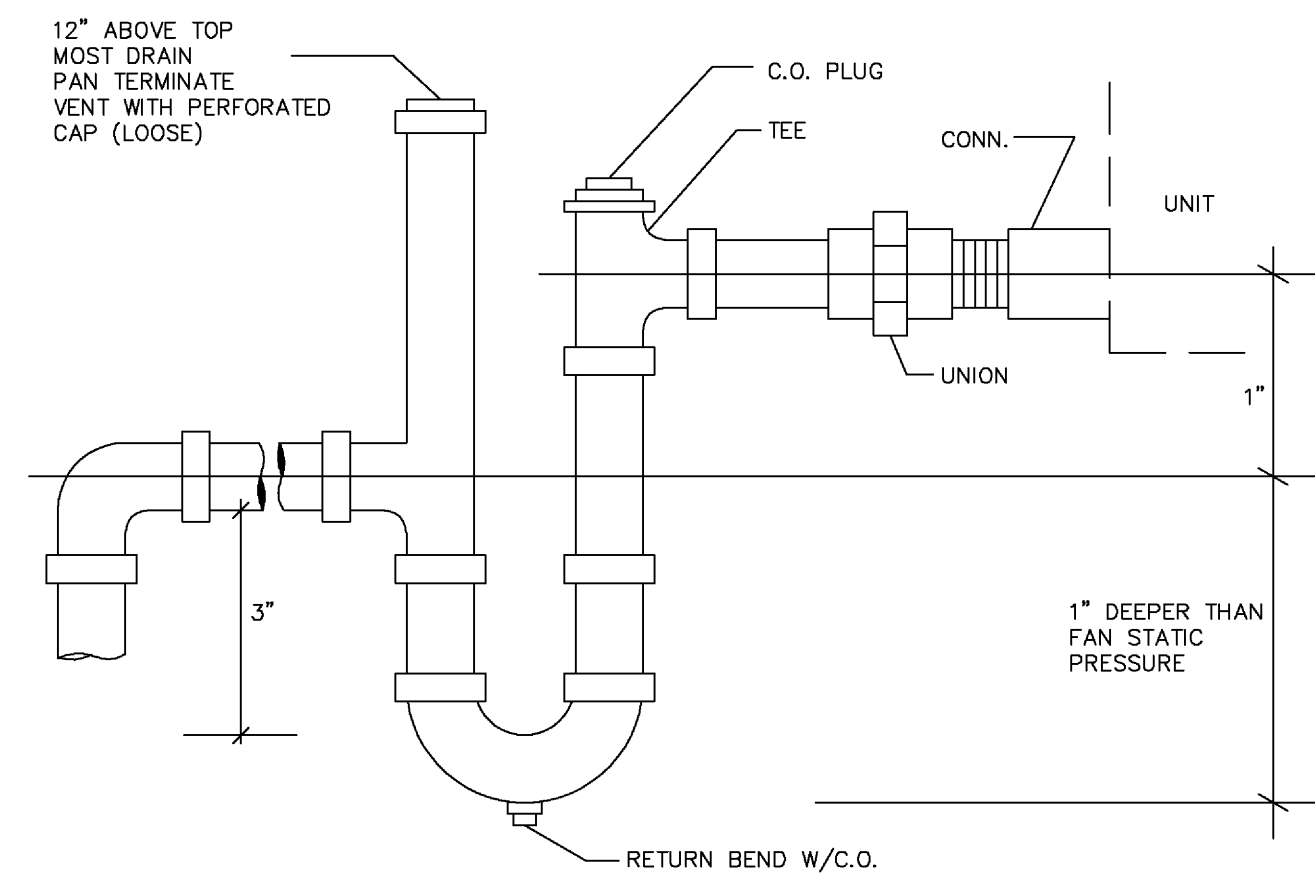


**SUPPORT CURB DETAIL- AC ROOF TOPS - NTS**

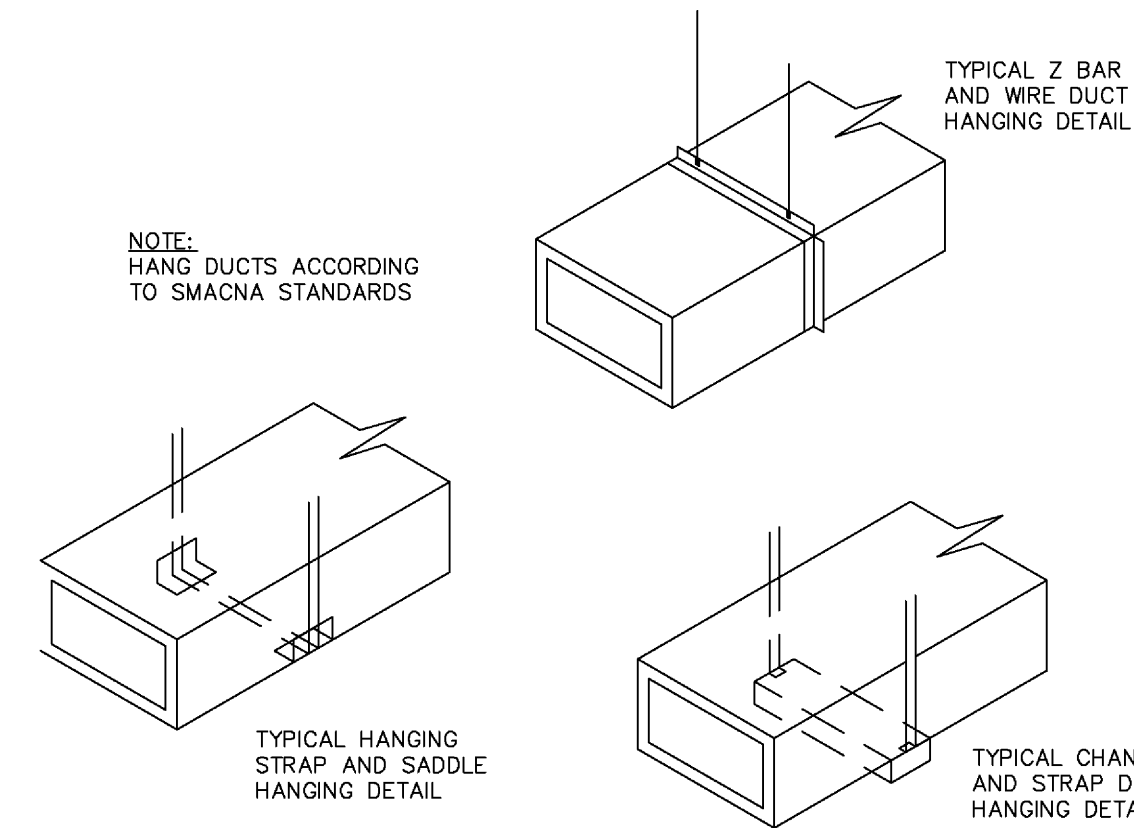


**WH RTU SECTION**  
SCALE: 1/4"=1'-0"

**MECHANICAL NOTES SCHEDULES DETAILS**  
NO SCALE:



**CONDENSATE PIPING DETAIL NTS**



**METHODS OF HANGING DUCTS - NTS**

**OUTDOOR AIR CALCULATION**

CALCULATION BASED ON ASHRAE 62.1-2004.

<b>RTU 1 WAREHOUSE</b>		
RECEIVING WAREHOUSE--06 CFM/SF x 2350 SF)	=	141 CFM
CFM REQUIRED: 141		
CFM SUPPLIED: 150		
<b>RTU 2 WAREHOUSE</b>		
RECEIVING WAREHOUSE--06 CFM/SF x 3150 SF)	=	189 CFM
CFM REQUIRED: 189		
CFM SUPPLIED: 200		
<b>RTU 3</b>		
OFFICES: (1650 SF x 5 PPL/1000 SF)x17 CFM/PERSON	=	140 CFM
CFM REQUIRED: 140		
CFM SUPPLIED: 140		
<b>RTU 4</b>		
MEZZANINE--1650 SFx .12 CFM/SF	=	198 CFM
CFM REQUIRED: 198		
CFM SUPPLIED: 200		

**MECHANICAL LEGEND**

- FIXED BLADE CEILING DIFFUSER (CD)
- FIXED BLADE RETURN/TRANSFER/EXHAUST GRILLE (RAG/TG/EF)
- 24X24 PERFORATED CEILING DIFFUSER.
- 24X24 PERFORATED RETURN/TRANSFER GRILLE.
- M V D MANUAL VOLUME CONTROL DAMPER.
- WALL MOUNTED THERMOSTAT.
- D M S D DUCT MOUNTED SMOKE DETECTOR.
- RIGID DUCTWORK.
- FLEXIBLE DUCTWORK.
- 45° ENTRY BRANCH, DIVERGING/CONVERGING.
- AHU AIR HANDLING UNIT.
- CU CONDENSING UNIT.
- C CONDENSATE LINE.

**AIR DEVICE SCHEDULE**

MANUFACTURED BY TITUS.

MODEL	CONSTRUCTION	MODULE	MOUNT	DESCRIPTION
TDC-AA	ALUMINUM		SURFACE	FIXED BLADE CEILING DIFFUSER W/OBD.
TDC-AA-3	ALUMINUM	24X24	LAY-IN	FIXED BLADE CEILING DIFFUSER W/OBD.
4FL-AA	ALUMINUM		SURFACE	FIXED BLADE CEILING/SIDEWALL RETURN GRILLE W/OBD.
4FL-AA-3	ALUMINUM	24X24	LAY-IN	FIXED BLADE CEILING RETURN GRILLE W/OBD.

- NOTES:  
1. ACCEPTABLE ALTERNATE MANUFACTURER SHALL BE METALAIR.  
2. COLOR SHALL BE WHITE.

**FAN SCHEDULE**

- REST ROOM EXH FAN/LIGHT FIXTURE
- GREENHECK
- SP-B110
- CEILING
- TOILET
- 100/0.25
- FRACTIONAL
- 950
- 120/1
- W/LIGHTED
- DECORATIVE GRILLE
- PRISMATIC LENS &
- TWO 13W CFL BULBS

**ROOF TOP AIR CONDITIONING SCHEDULE**

MODEL NUMBERS BASED ON TRANE.

SYSTEM	1, 2 WAREHOUSE	3 OFFICES	4 MEZZANINE
MODEL	TSC036E1	TSC048E1	
SEER	15.0	15.0	
ARI RATED CFM	1200	1600	
HEAT KW @208	7.5	7.5	
MCA	27.2	35.2	
FUSE	60	60	
DIMENSIONS (LXWXH)	65" X37" X46"	65" X37" X46"	
WEIGHT (LBS)	481	511	
REFRIGERANT	R-410	R-410	
TOTAL BTUH (NET)	38500	52300	
TOT. SENS. (NET)	28000	38100	
TONS	3.0	4.0	

- NOTES:  
1. TEMPERATURE CONTROL SYSTEM SHALL INCLUDE OFFSITE COMPMUTER & TELEPHONE MANAGEMENT. PROVIDE TELEPHONE ACCESS MODULE& TCNT1900AC43UA.

**ALTERNATE ROOF TOP BID-LENNOX 17.0 SEER SERIES**

ALAN STRASSLER ARCHITECTS, INC.  
8806 NORTH MILITARY ROAD, SUITE 201-D  
PALM BEACH GARDENS, FLORIDA 33410  
(951) 627-0338 FAX (561) 624-0720  
ALAN STRASSLER ARCHITECTS, INC. REGISTRATION #AA0000910

SEAL

MEDICAL TECHNOLOGY PRODUCTS  
LOT #7  
RIVIERA BEACH, FLORIDA  
HAVERHILL BUSINESS PARK  
HAVERHILL ROAD  
ELECTRICAL SITE PLAN  
1/8"=1'-0"

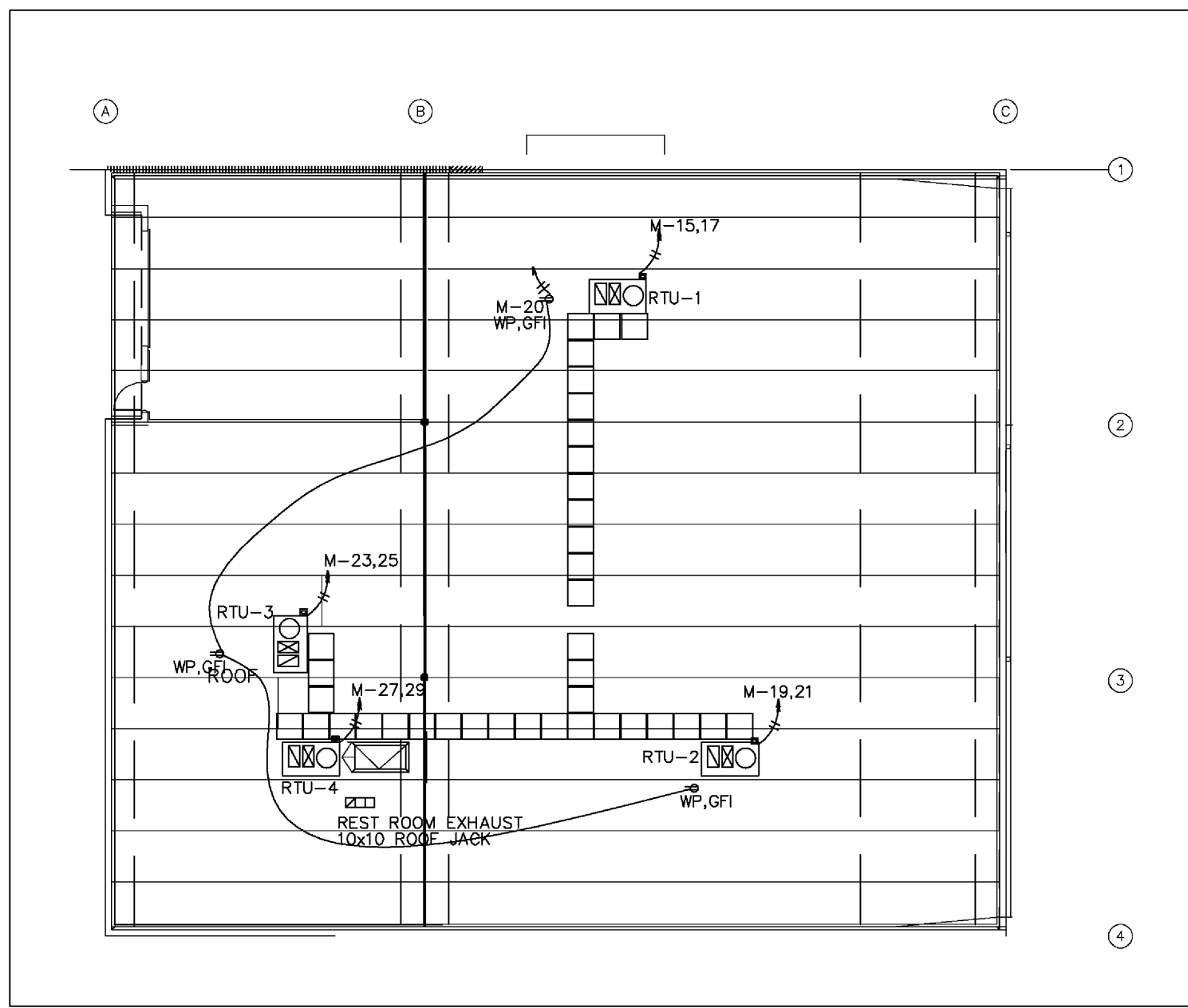
DATE: 7/6/10  
DRAWN BY: AIC  
PROJ. NO. 10025  
REVISID:

SHEET:

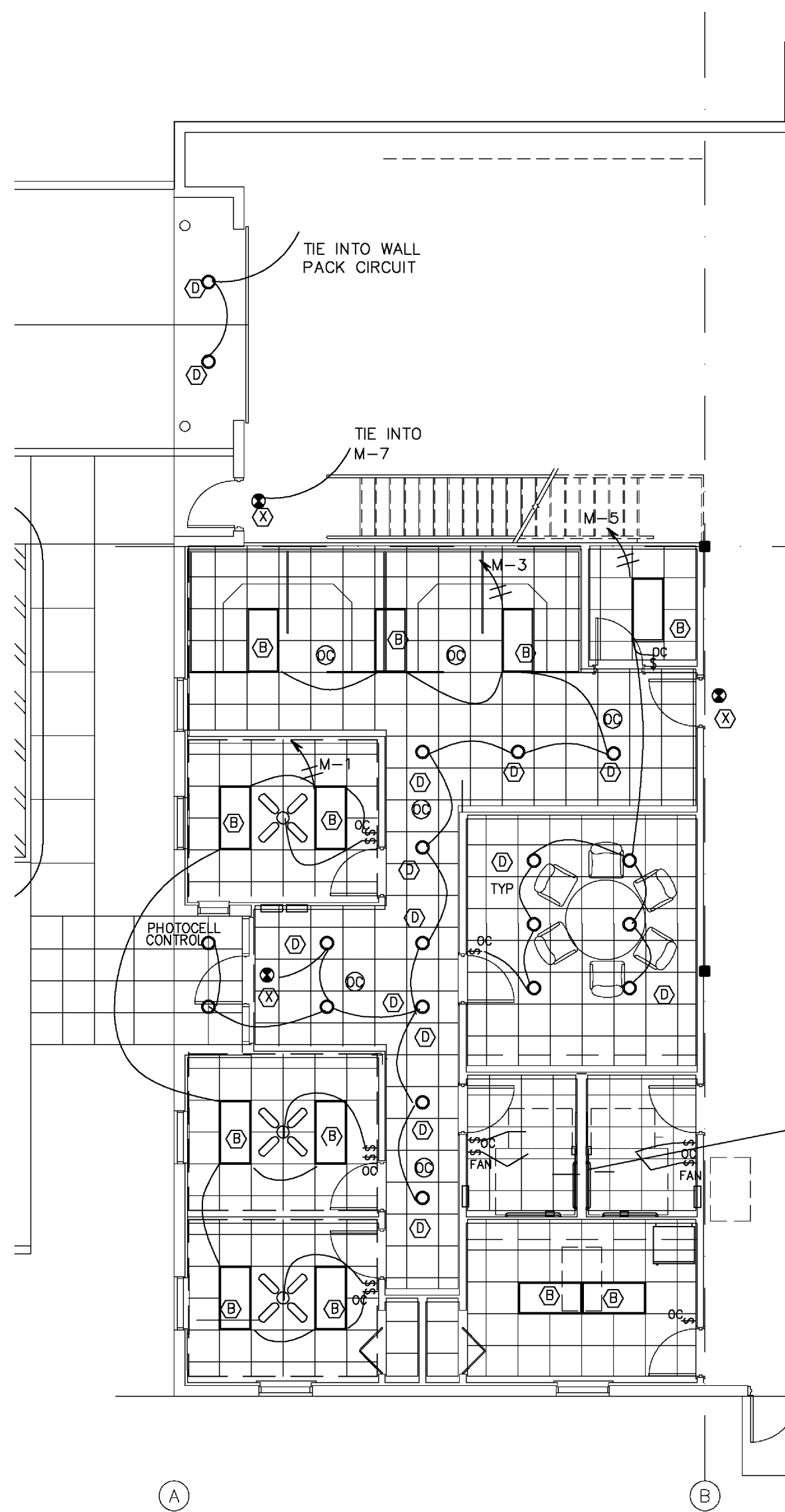
M2

CHANE, INC.  
CONSULTING ENGINEERS  
2705 PARK STREET  
LAKE WORTH, FL 33460  
E-MAIL CHANEINC@AOL.COM  
TEL. 561-586-4003 FAX. 561-586-5688  
CERTIFICATE OF AUTHORIZATION #2559  
ARNOLD I. CHANE, PE #10024  
DAVID R. JONES, PE #41042  
HOWARD L. CHANE, PE #22467

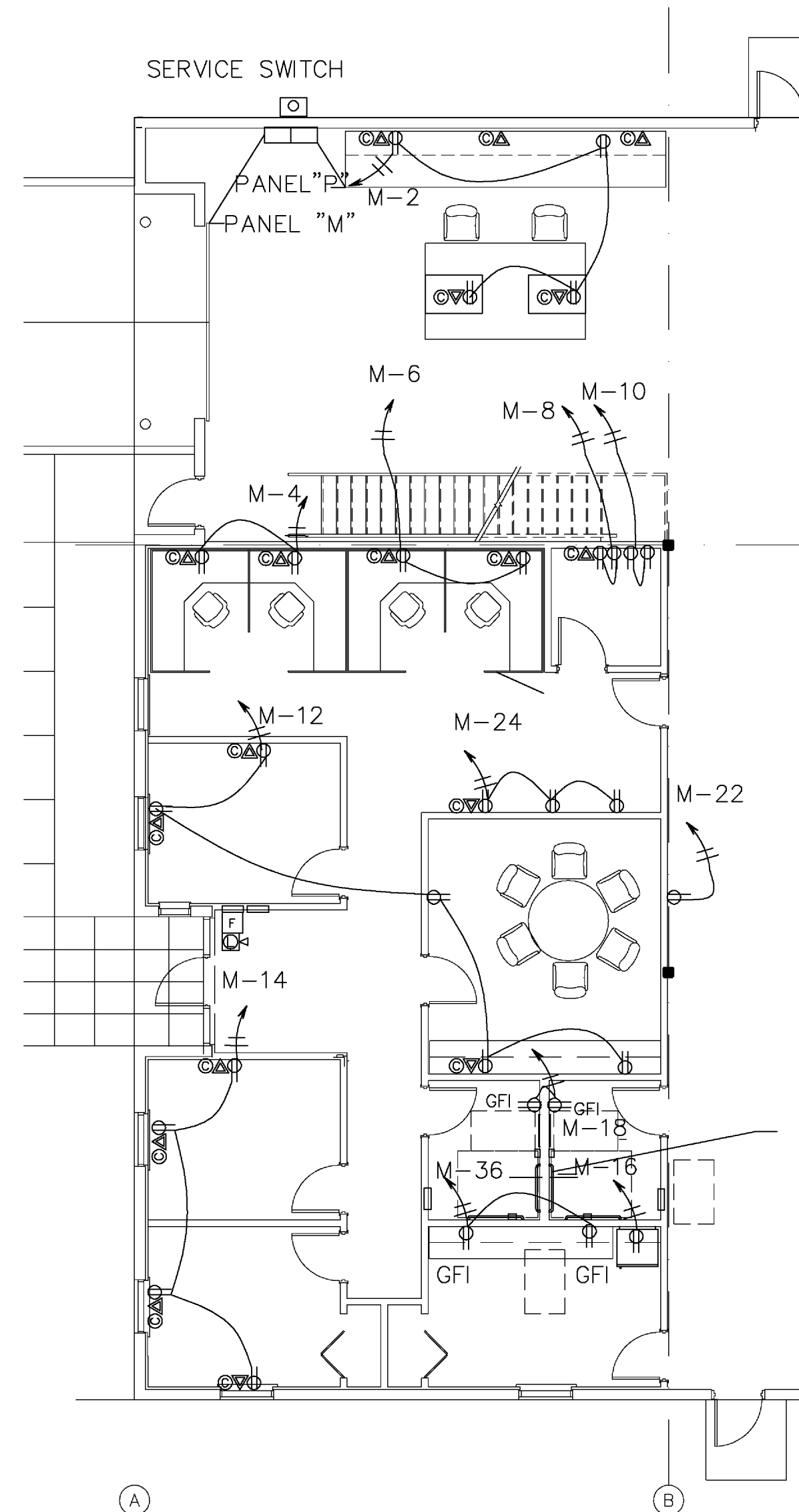
SEAL



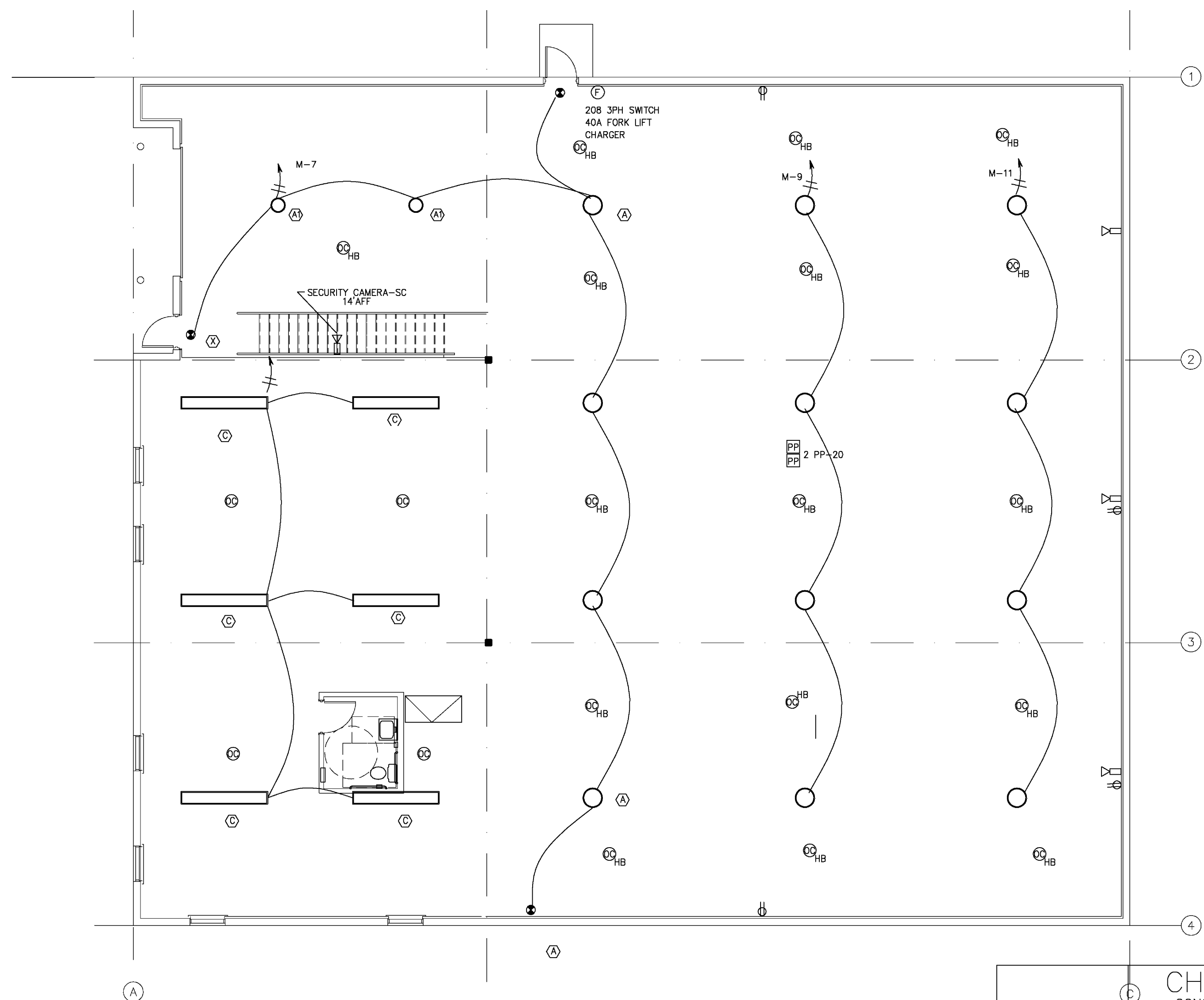
ELECTRIC ROOF PLAN  
SCALE: 1/16"=1'-0"



OFFICE LIGHTING PLAN  
SCALE: 1/8"=1'-0"



OFFICE POWER PLAN  
SCALE: 1/8"=1'-0"



WAREHOUSE LIGHTING & POWER PLAN  
SCALE: 1/8"=1'-0"

CHANE, INC.  
CONSULTING ENGINEERS  
2705 PARK STREET  
LAKE WORTH, FL 33460  
E-MAIL CHANEINC@AOL.COM  
TEL. 561-586-4003 FAX. 561-586-5688  
CERTIFICATE OF AUTHORIZATION #2559  
ARNOLD L. CHANE, PE #10024  
DAVID R. JONES, PE #41042  
HOWARD L. CHANE, PE #22467

SEAL

ALAN STRASSLER  
ARCHITECTS, INC.  
8895 NORTH MILITARY TRAIL, SUITE 201-D  
PALM BEACH GARDENS, FLORIDA 33410  
(561) 827-0336  
ALAN STRASSLER #40800610  
ALAN STRASSLER #7425



SEAL

MEDICAL TECHNOLOGY PRODUCTS  
LOT #7  
RIVERA BEACH, FLORIDA  
HAVERHILL BUSINESS PARK  
HAVERHILL ROAD  
MEZZANINE PLAN/ROOF PLAN AND DETAILS: 1/8"=1'-0"

DATE: 7/6/10  
DRAWN BY: AIC  
PROJ. NO. 1025  
REVISED:

SHEET:

E1

LOAD CENTER SCHEDULE 'M'											
120/208 VOLTS	3 PHASE	4 WIRE	225 AMP MAIN	LUSS	SHORT CIRCUIT I=	22,000	42 BRANCH CIRCUIT	X FULL-NEUTRAL			
FLUSH MOUNTING	AMPS	LOAD	BRK	C	1	2	LOAD	A	B	C	COND. #
1/2" #2	7	LIGHTING	1	20	1	2	RECEPTACLES SHIPPING	8			1/2" #2
4	6	ENTRY CORN/CORBL	3	4			CORBL	9			
	5	BREAK DOWN/LOW	5	6			CORBL	6			
10		WAREHOUSE	7	8			SERVER	8			
12		WAREHOUSE	9	10			JASON-COM	8			
8		WAREHOUSE	11	12			CORBL-CARRY	8			
1" #1/2	40	RTU 1-WAREHOUSE	2	60	15	16	REFRIGERATOR	3			
1" #1/2	40	RTU 2-WAREHOUSE	2	60	15	16	REST RM QTY	5			
1" #1/2	40	RTU 3-WAREHOUSE	2	60	15	16	ROOF RECP	5			
1" #1/2	40	RTU 4-OFFICES	2	70	29	30	FORK LIFT CHARGER	32			3/4" #1/2
1" #1/2	40	RTU 5-MEZZANINE	2	80	23	24	OPR	3			
1" #1/2	40	RTU 6-WAREHOUSE	2	60	15	16	OPR	3			
1" #1/2	40	RTU 7-WAREHOUSE	2	60	15	16	OPR	3			
1" #1/2	40	RTU 8-WAREHOUSE	2	60	15	16	OPR	3			
1" #1/2	40	RTU 9-WAREHOUSE	2	60	15	16	OPR	3			
1" #1/2	40	RTU 10-WAREHOUSE	2	60	15	16	OPR	3			
1" #1/2	40	RTU 11-WAREHOUSE	2	60	15	16	OPR	3			
1" #1/2	40	RTU 12-WAREHOUSE	2	60	15	16	OPR	3			
1" #1/2	40	RTU 13-WAREHOUSE	2	60	15	16	OPR	3			
1" #1/2	40	RTU 14-WAREHOUSE	2	60	15	16	OPR	3			
1" #1/2	40	RTU 15-WAREHOUSE	2	60	15	16	OPR	3			
1" #1/2	40	RTU 16-WAREHOUSE	2	60	15	16	OPR	3			
1" #1/2	40	RTU 17-WAREHOUSE	2	60	15	16	OPR	3			
1" #1/2	40	RTU 18-WAREHOUSE	2	60	15	16	OPR	3			
1" #1/2	40	RTU 19-WAREHOUSE	2	60	15	16	OPR	3			
1" #1/2	40	RTU 20-WAREHOUSE	2	60	15	16	OPR	3			
1" #1/2	40	RTU 21-WAREHOUSE	2	60	15	16	OPR	3			
1" #1/2	40	RTU 22-WAREHOUSE	2	60	15	16	OPR	3			
1" #1/2	40	RTU 23-WAREHOUSE	2	60	15	16	OPR	3			
1" #1/2	40	RTU 24-WAREHOUSE	2	60	15	16	OPR	3			
1" #1/2	40	RTU 25-WAREHOUSE	2	60	15	16	OPR	3			
1" #1/2	40	RTU 26-WAREHOUSE	2	60	15	16	OPR	3			
1" #1/2	40	RTU 27-WAREHOUSE	2	60	15	16	OPR	3			
1" #1/2	40	RTU 28-WAREHOUSE	2	60	15	16	OPR	3			
1" #1/2	40	RTU 29-WAREHOUSE	2	60	15	16	OPR	3			
1" #1/2	40	RTU 30-WAREHOUSE	2	60	15	16	OPR	3			
1" #1/2	40	RTU 31-WAREHOUSE	2	60	15	16	OPR	3			
1" #1/2	40	RTU 32-WAREHOUSE	2	60	15	16	OPR	3			
1" #1/2	40	RTU 33-WAREHOUSE	2	60	15	16	OPR	3			
1" #1/2	40	RTU 34-WAREHOUSE	2	60	15	16	OPR	3			
1" #1/2	40	RTU 35-WAREHOUSE	2	60	15	16	OPR	3			
1" #1/2	40	RTU 36-WAREHOUSE	2	60	15	16	OPR	3			
1" #1/2	40	RTU 37-WAREHOUSE	2	60	15	16	OPR	3			
1" #1/2	40	RTU 38-WAREHOUSE	2	60	15	16	OPR	3			
1" #1/2	40	RTU 39-WAREHOUSE	2	60	15	16	OPR	3			
1" #1/2	40	RTU 40-WAREHOUSE	2	60	15	16	OPR	3			
1" #1/2	40	RTU 41-WAREHOUSE	2	60	15	16	OPR	3			
1" #1/2	40	RTU 42-WAREHOUSE	2	60	15	16	OPR	3			
1" #1/2	40	RTU 43-WAREHOUSE	2	60	15	16	OPR	3			
1" #1/2	40	RTU 44-WAREHOUSE	2	60	15	16	OPR	3			
1" #1/2	40	RTU 45-WAREHOUSE	2	60	15	16	OPR	3			
1" #1/2	40	RTU 46-WAREHOUSE	2	60	15	16	OPR	3			
1" #1/2	40	RTU 47-WAREHOUSE	2	60	15	16	OPR	3			
1" #1/2	40	RTU 48-WAREHOUSE	2	60	15	16	OPR	3			
1" #1/2	40	RTU 49-WAREHOUSE	2	60	15	16	OPR	3			
1" #1/2	40	RTU 50-WAREHOUSE	2	60	15	16	OPR	3			
1" #1/2	40	RTU 51-WAREHOUSE	2	60	15	16	OPR	3			
1" #1/2	40	RTU 52-WAREHOUSE	2	60	15	16	OPR	3			
1" #1/2	40	RTU 53-WAREHOUSE	2	60	15	16	OPR	3			
1" #1/2	40	RTU 54-WAREHOUSE	2	60	15	16	OPR	3			
1" #1/2	40	RTU 55-WAREHOUSE	2	60	15	16	OPR	3			
1" #1/2	40	RTU 56-WAREHOUSE	2	60	15	16	OPR	3			
1" #1/2	40	RTU 57-WAREHOUSE	2	60	15	16	OPR	3			
1" #1/2	40	RTU 58-WAREHOUSE	2	60	15	16	OPR	3			
1" #1/2	40	RTU 59-WAREHOUSE	2	60	15	16	OPR	3			
1" #1/2	40	RTU 60-WAREHOUSE	2	60	15	16	OPR	3			
1" #1/2	40	RTU 61-WAREHOUSE	2	60	15	16	OPR	3			
1" #1/2	40	RTU 62-WAREHOUSE	2	60	15	16	OPR	3			
1" #1/2	40	RTU 63-WAREHOUSE	2	60	15	16	OPR	3			
1" #1/2	40	RTU 64-WAREHOUSE	2	60	15	16	OPR	3			
1" #1/2	40	RTU 65-WAREHOUSE	2	60	15	16	OPR	3			
1" #1/2	40	RTU 66-WAREHOUSE	2	60	15	16	OPR	3			
1" #1/2	40	RTU 67-WAREHOUSE	2	60	15	16	OPR	3			
1" #1/2	40	RTU 68-WAREHOUSE	2	60	15	16	OPR	3			
1" #1/2	40	RTU 69-WAREHOUSE	2	60	15	16	OPR	3			
1" #1/2	40	RTU 70-WAREHOUSE	2	60	15	16	OPR	3			
1" #1/2	40	RTU 71-WAREHOUSE	2	60	15	16	OPR	3			
1" #1/2	40	RTU 72-WAREHOUSE	2	60	15	16	OPR	3			
1" #1/2	40	RTU 73-WAREHOUSE	2	60	15	16	OPR	3			
1" #1/2	40	RTU 74-WAREHOUSE	2	60	15	16	OPR	3			
1" #1/2	40	RTU 75-WAREHOUSE	2	60	15	16	OPR	3			
1" #1/2	40	RTU 76-WAREHOUSE	2	60	15	16	OPR	3			
1" #1/2	40	RTU 77-WAREHOUSE	2	60	15	16	OPR	3			
1" #1/2	40	RTU 78-WAREHOUSE	2	60	15	16	OPR	3			
1" #1/2	40	RTU 79-WAREHOUSE	2	60	15	16	OPR	3			
1" #1/2	40	RTU 80-WAREHOUSE	2	60	15	16	OPR	3			
1" #1/2	40	RTU 81-WAREHOUSE	2	60	15	16	OPR	3			
1" #1/2	40	RTU 82-WAREHOUSE	2	60	15	16	OPR	3			
1" #1/2	40	RTU 83-WAREHOUSE	2	60	15	16	OPR	3			
1" #1/2	40	RTU 84-WAREHOUSE	2	60	15	16	OPR	3			
1" #1/2	40	RTU 85-WAREHOUSE	2	60	15	16	OPR	3			
1" #1/2	40	RTU 86-WAREHOUSE	2	60	15	16	OPR	3			
1" #1/2	40	RTU 87-WAREHOUSE	2	60	15	16	OPR	3			
1" #1/2	40	RTU 88-WAREHOUSE	2	60	15	16	OPR	3			
1" #1/2	40	RTU 89-WAREHOUSE	2	60	15	16	OPR	3			
1" #1/2	40	RTU 90-WAREHOUSE	2	60	15	16	OPR	3			
1" #1/2	40	RTU 91-WAREHOUSE	2	60	15	16	OPR	3			
1" #1/2	40	RTU 92-WAREHOUSE	2	60	15	16	OPR	3			
1" #1/2	40	RTU 93-WAREHOUSE	2	60	15	16	OPR	3			
1" #1/2	40	RTU 94-WAREHOUSE	2	60	15	16	OPR	3			
1" #1/2	40	RTU 95-WAREHOUSE	2	60	15	16	OPR	3			
1" #1/2	40	RTU 96-WAREHOUSE	2	60	15	16	OPR	3			
1" #1/2	40	RTU 97-WAREHOUSE	2	60	15	16	OPR	3			
1" #1/2	40	RTU 98-WAREHOUSE	2	60	15	16	OPR	3			
1" #1/2	40	RTU 99-WAREHOUSE	2	60	15	16	OPR	3			
1" #1/2	40	RTU 100-WAREHOUSE	2	60	15	16	OPR	3			
1" #1/2	40	RTU 101-WAREHOUSE	2	60	15	16	OPR	3			
1" #1/2	40	RTU 102-WAREHOUSE	2	60	15	16	OPR	3			
1" #1/2	40	RTU 103-WAREHOUSE	2	60	15	16	OPR	3			
1" #1/2	40	RTU 104-WAREHOUSE	2	60	15	16	OPR	3			
1" #1/2	40	RTU 105-WAREHOUSE	2	60	15	16	OPR	3			
1" #1/2	40	RTU 106-WAREHOUSE	2	60	15	16	OPR	3			
1" #1/2	40	RTU 107-WAREHOUSE	2	60	15	16	OPR	3			
1" #1/2	40	RTU 108-WAREHOUSE	2	60	15	16	OPR	3			
1" #1/2	40	RTU 109-WAREHOUSE	2	60	15	16	OPR	3			
1" #1/2	40	RTU 110-WAREHOUSE	2	60	15	16	OPR	3			
1" #1/2	40	RTU 111-WAREHOUSE	2	60	15	16	OPR	3			
1" #1/2	40	RTU 112-WAREHOUSE	2	60	15	16	OPR	3			
1" #1/2	40	RTU 113-WAREHOUSE	2	60	15	16	OPR	3			
1" #1/2	40	RTU									