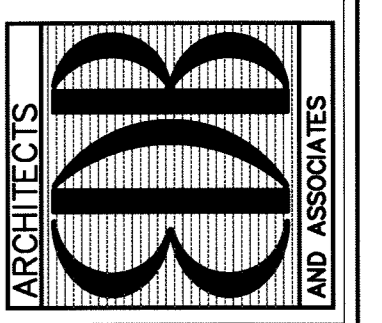


PLAN REFERENCE NOTES:

- ① MOUNT IN-LINE EXHAUST FAN IN THE VERTICAL, BOTTOM OF FAN NO LOWER THAN 7 FEET 6 INCHES ABOVE FINISHED FLOOR. PROVIDE #10 WELDED WIRE MESH, 1/2"x1/2" OPENINGS AT FAN INLET. PROVIDE 14x14 EXHAUST DUCT UP TO ROOF MOUNTED EXHAUST DISCHARGE LOUVERED ENCLOSURE. PROVIDE DUCT TRANSITION FROM 14x14 DUCT TO LOUVERED ENCLOSURE CONNECTION AND FROM FAN OUTLET TO 14x14 EXHAUST DUCT. INTERLOCK FAN WITH RESTROOM LIGHTING CIRCUIT. INTERLOCK EF-2 WITH MEN'S RESTROOM LIGHTING CIRCUIT AND EF-3 WITH WOMEN'S RESTROOM LIGHTING CIRCUIT.
- ② MAKE-UP AIR FOR RESTROOMS AND JANITOR'S CLOSET IS FROM EXTERIOR BLOCK OPENINGS, LOUVERS IN WALLS AND DOOR UNDERCUTS.

RESTROOM BUILDING
FLOOR PLAN - MECHANICAL
1
M-3 1/4" = 1'-0" →

EDLUND, DRITENBAS, BINKLEY
ARCHITECTS AND ASSOCIATES, P.A.
AR-AA 000086
65 ROYAL PALM POINTE, SUITE "D"
VERO BEACH, FLORIDA 32960
PHONE: (772) 569-4320



SEAL:

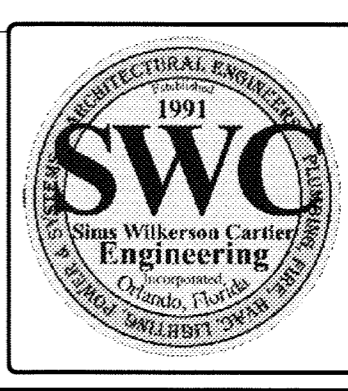
PROJECT: SLC INTERMODAL TRANSIT FACILITY
FOR: ST. LUCIE COUNTY
23600 VIRGINIA AVENUE
FORT PIERCE FL 34982

NO.	DATE	REVISIONS

APRIL 2010
THE INFORMATION ON THIS PLAN IS THE PROPERTY OF SIMS WILKERSON CARTIER ENGINEERING, INC. AND IS TO BE USED ONLY FOR THE PROJECT AND SITE SPECIFICALLY IDENTIFIED HEREON. ANY REUSE OR MODIFICATION OF THIS INFORMATION WITHOUT THE WRITTEN CONSENT OF SIMS WILKERSON CARTIER ENGINEERING, INC. IS PROHIBITED.

COMM. NO: 010406V5
DATE: 01 APRIL 2010
BY: SUC
CH'KD: SUC

SHEET NO.
M-3



Sims Wilkerson Cartier
Engineering, Inc.
12124 High Tech Avenue - Suite 200
Orlando, Florida 32817
(407) 380-0400 FAX (407) 380-5900
FL. CERT. OF AUTH. NO. 6106 09033
GARY A. WILKERSON, P.E. 43167
KYLE J. CARTIER, P.E. 53269
HOWARD J. PAIGE, P.E. 48198
JEFF A. KIRKMAN, P.E. 65629