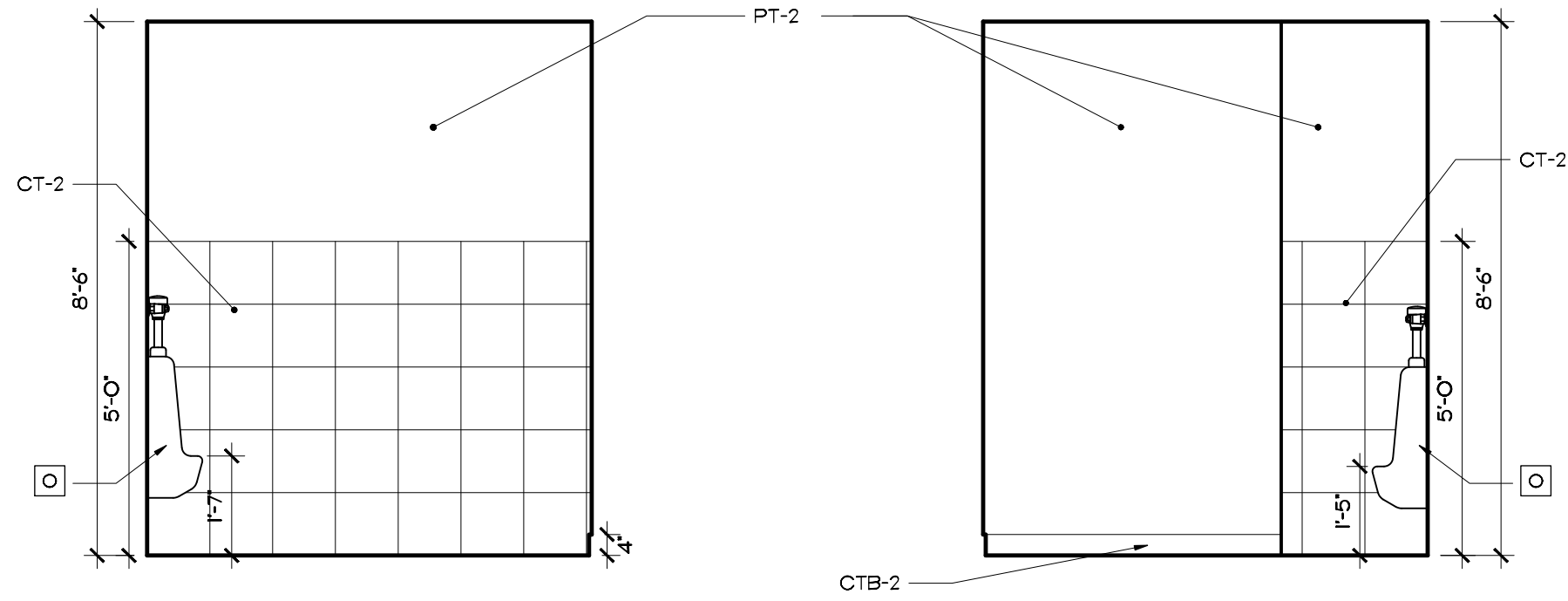
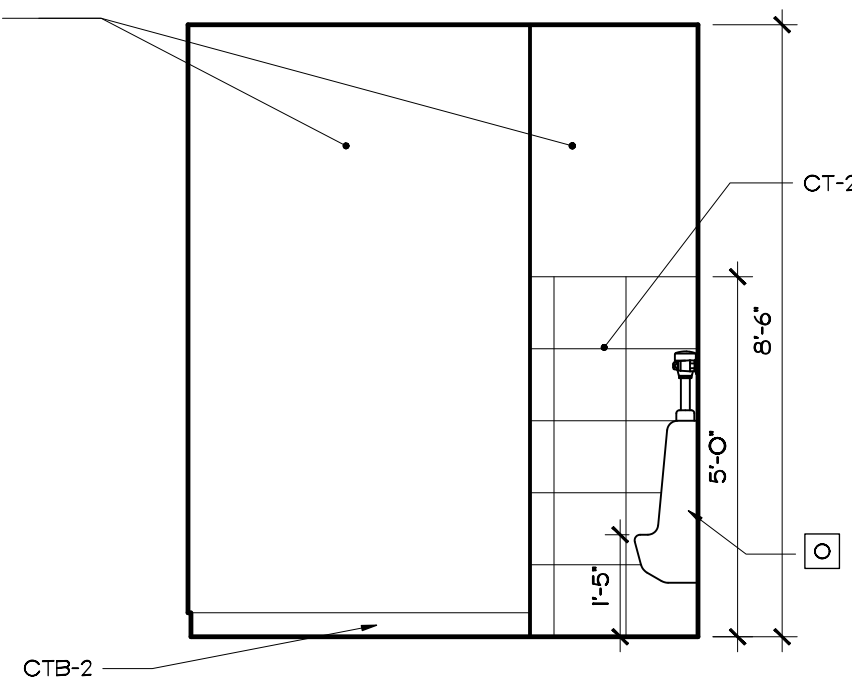


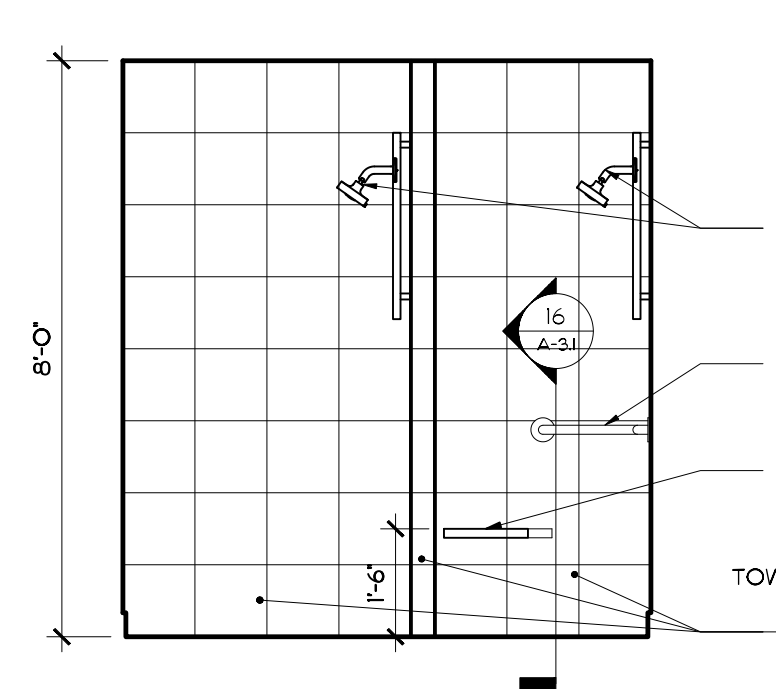
1 MEN #106
SCALE: 3/8"=1'-0"



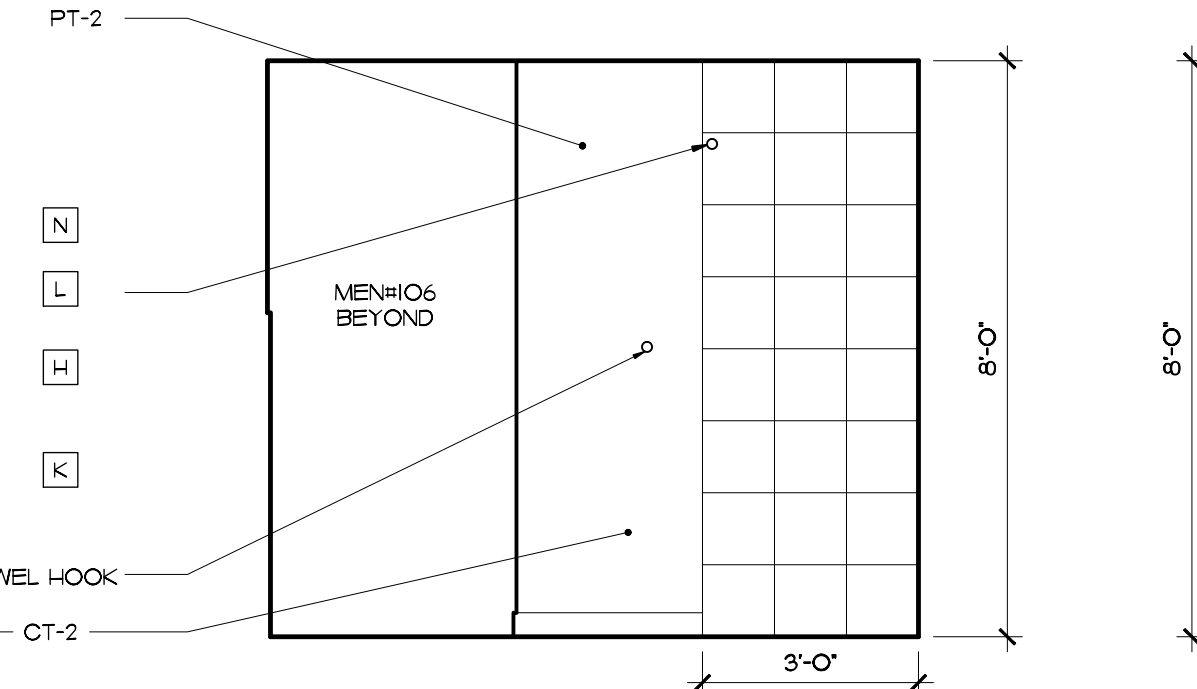
2 MEN #106
SCALE: 3/8"=1'-0"



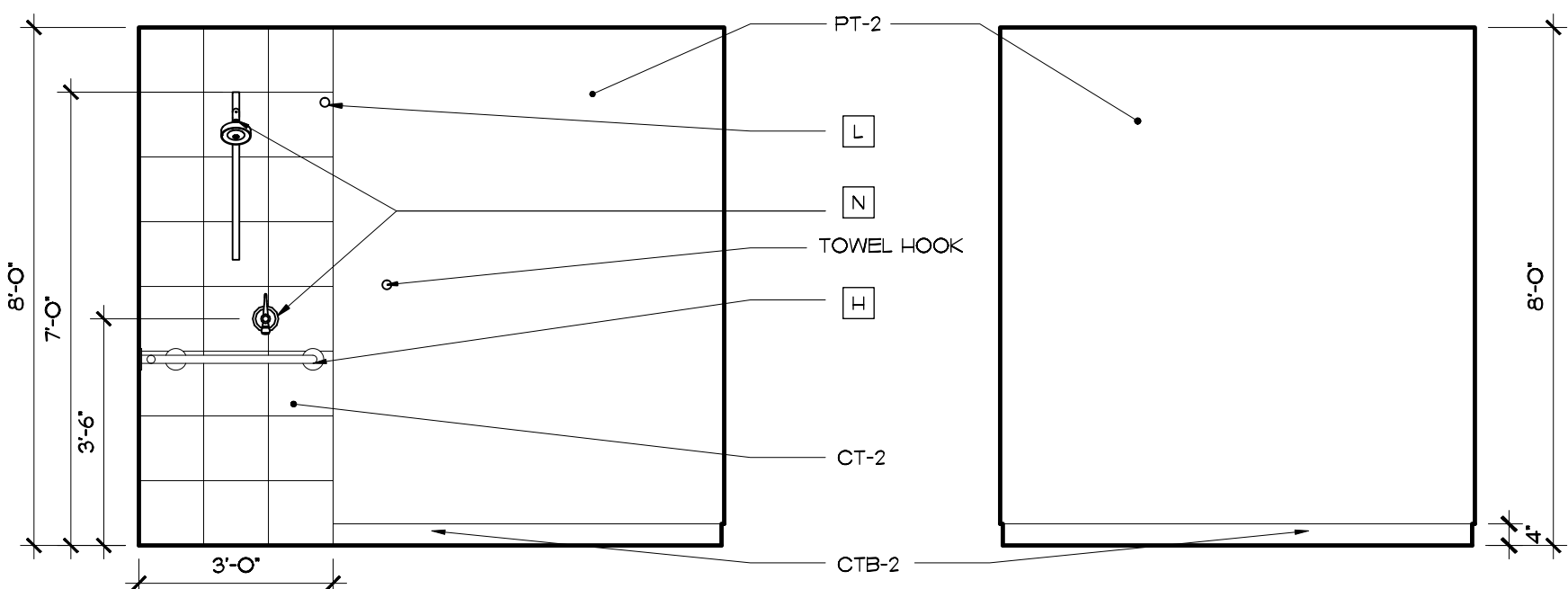
3 MEN #106
SCALE: 3/8"=1'-0"



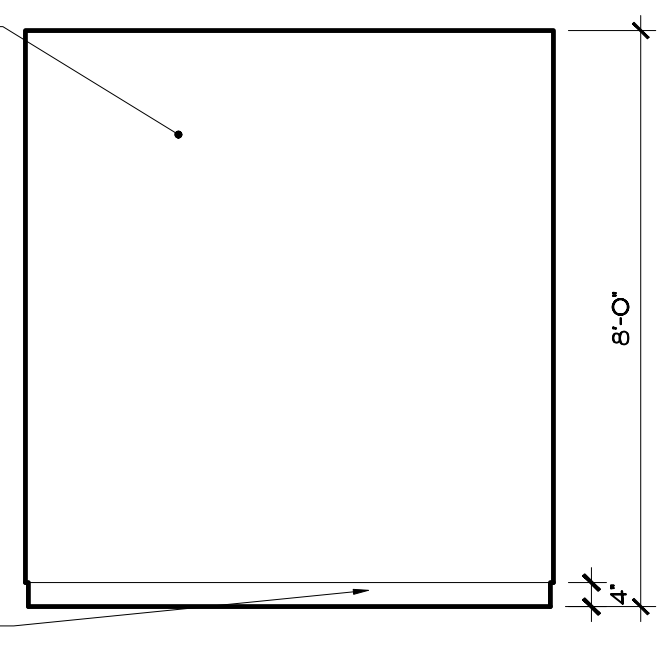
4 SHOWER #108
SCALE: 3/8"=1'-0"



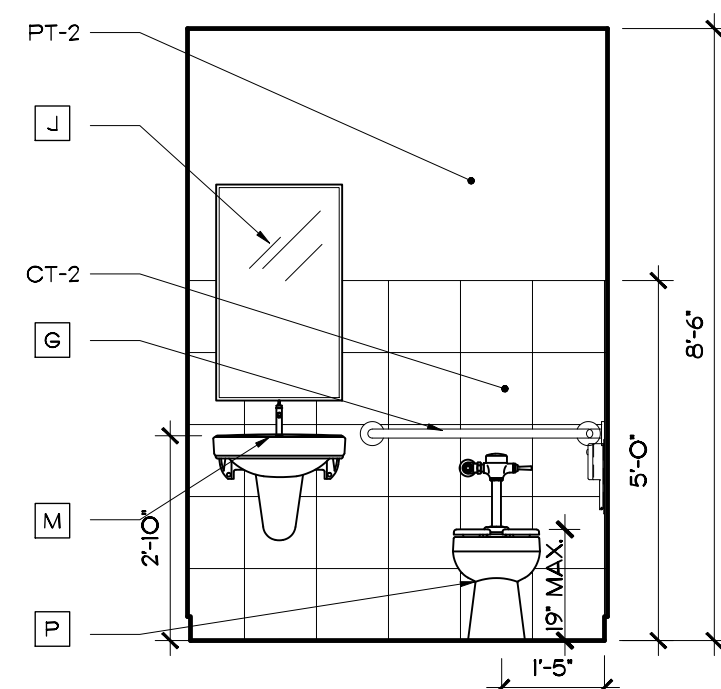
5 SHOWER #108
SCALE: 3/8"=1'-0"



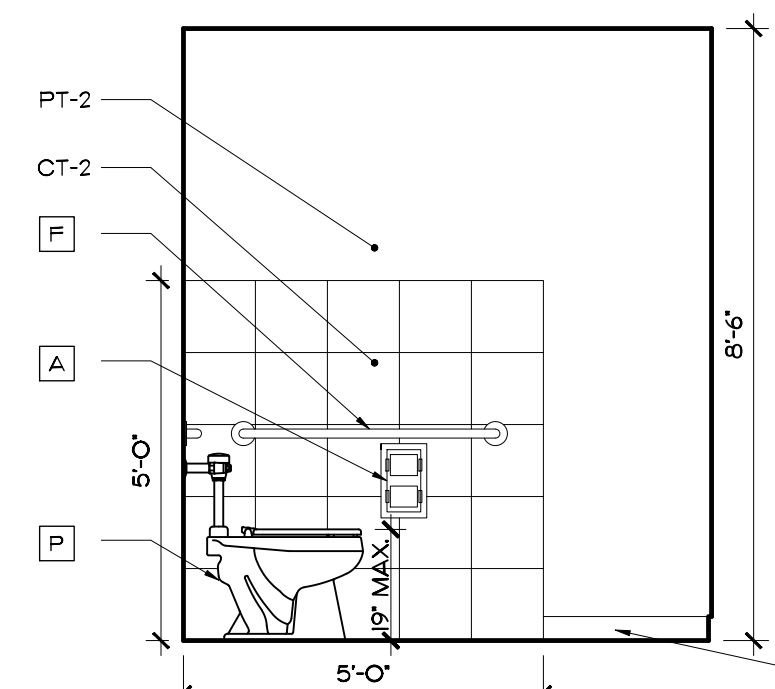
6 SHOWER #108
SCALE: 3/8"=1'-0"



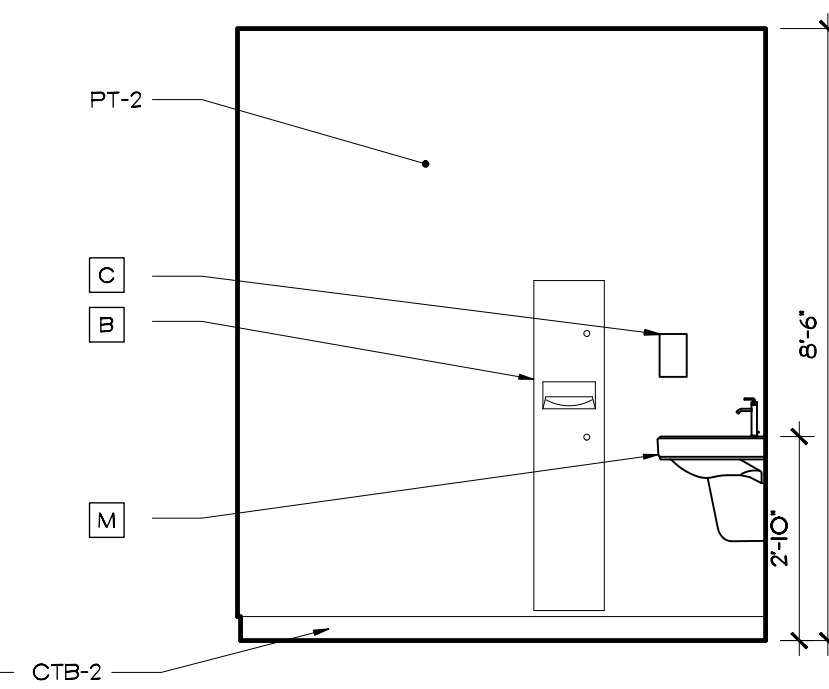
7 SHOWER #108
SCALE: 3/8"=1'-0"



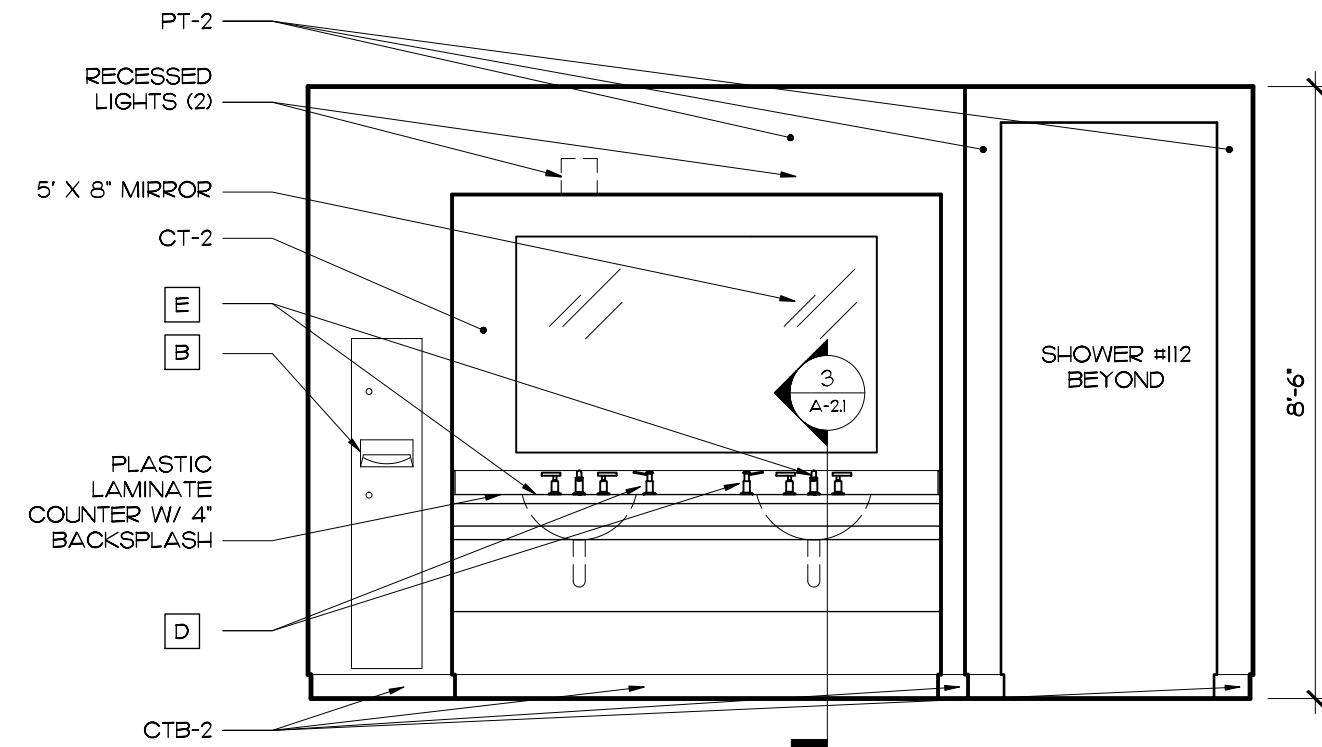
8 ADA #107
SCALE: 3/8"=1'-0"



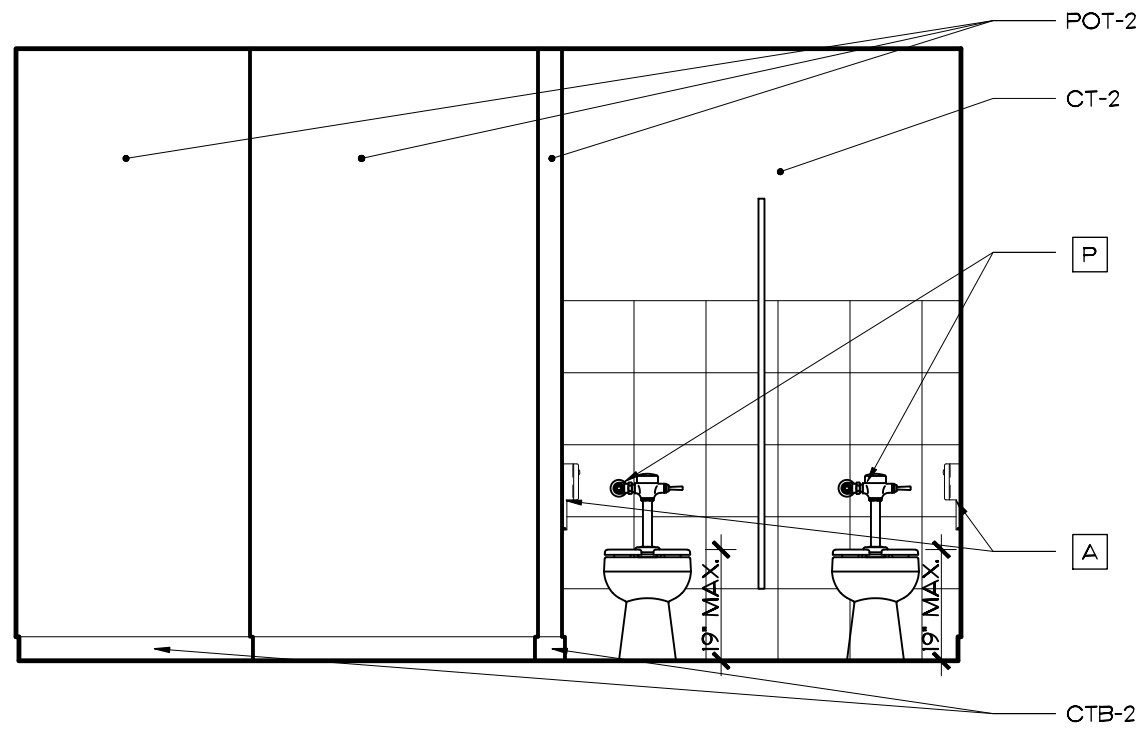
9 ADA #107
SCALE: 3/8"=1'-0"



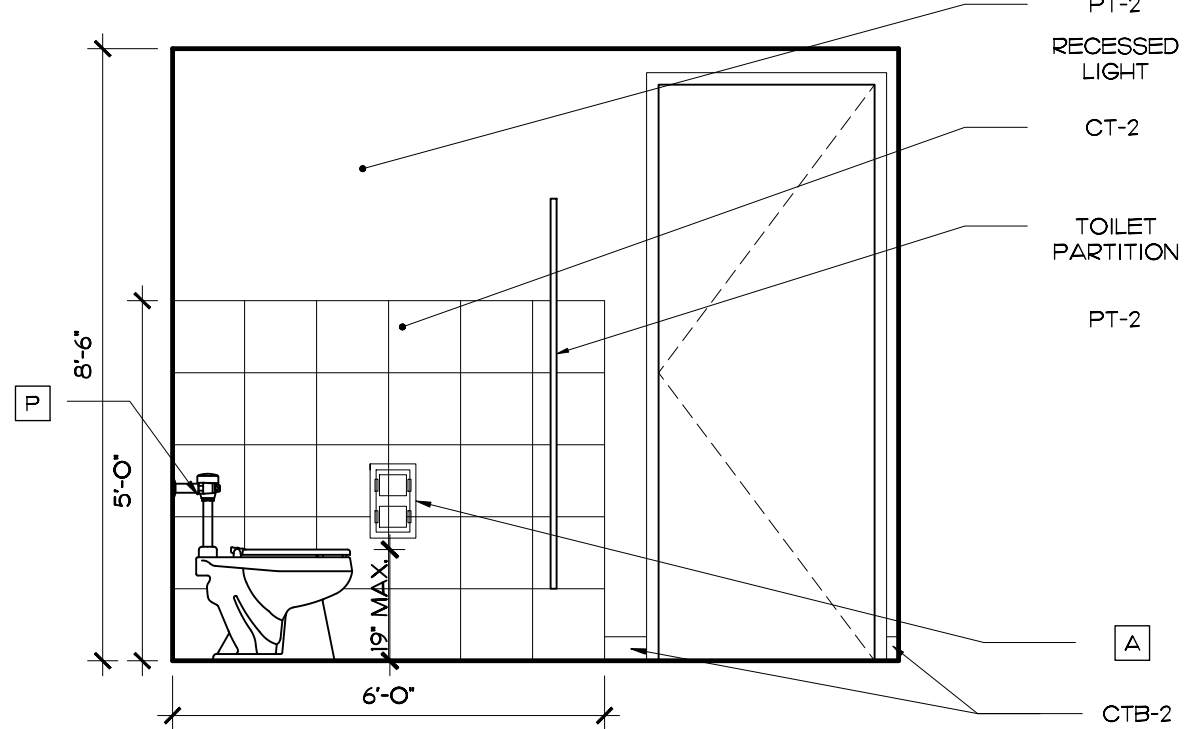
10 ADA #107
SCALE: 3/8"=1'-0"



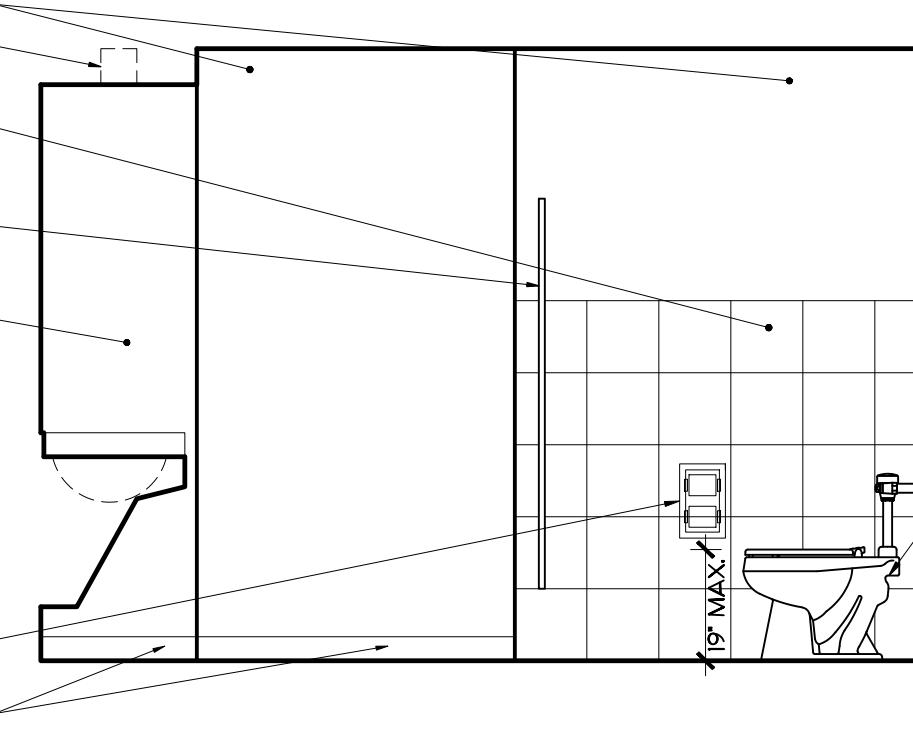
11 WOMEN #116
SCALE: 3/8"=1'-0"



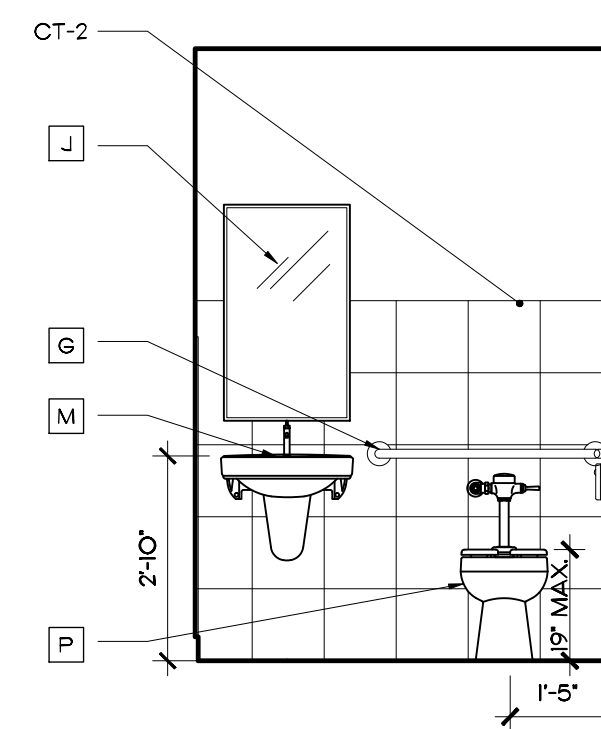
12 WOMEN #116
SCALE: 3/8"=1'-0"



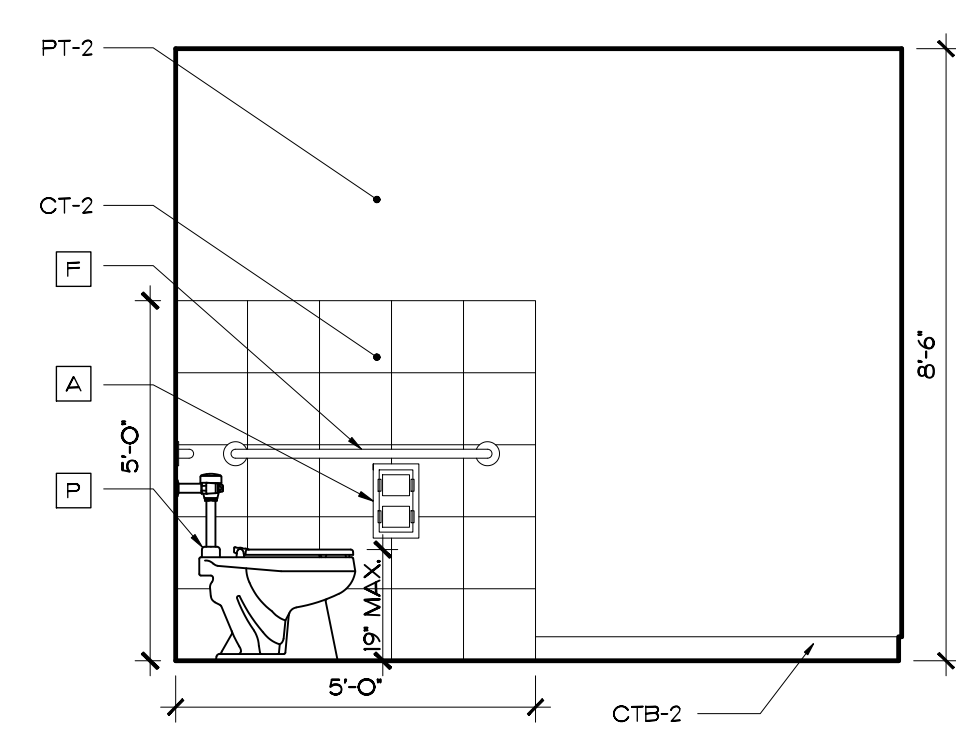
13 WOMEN #116
SCALE: 3/8"=1'-0"



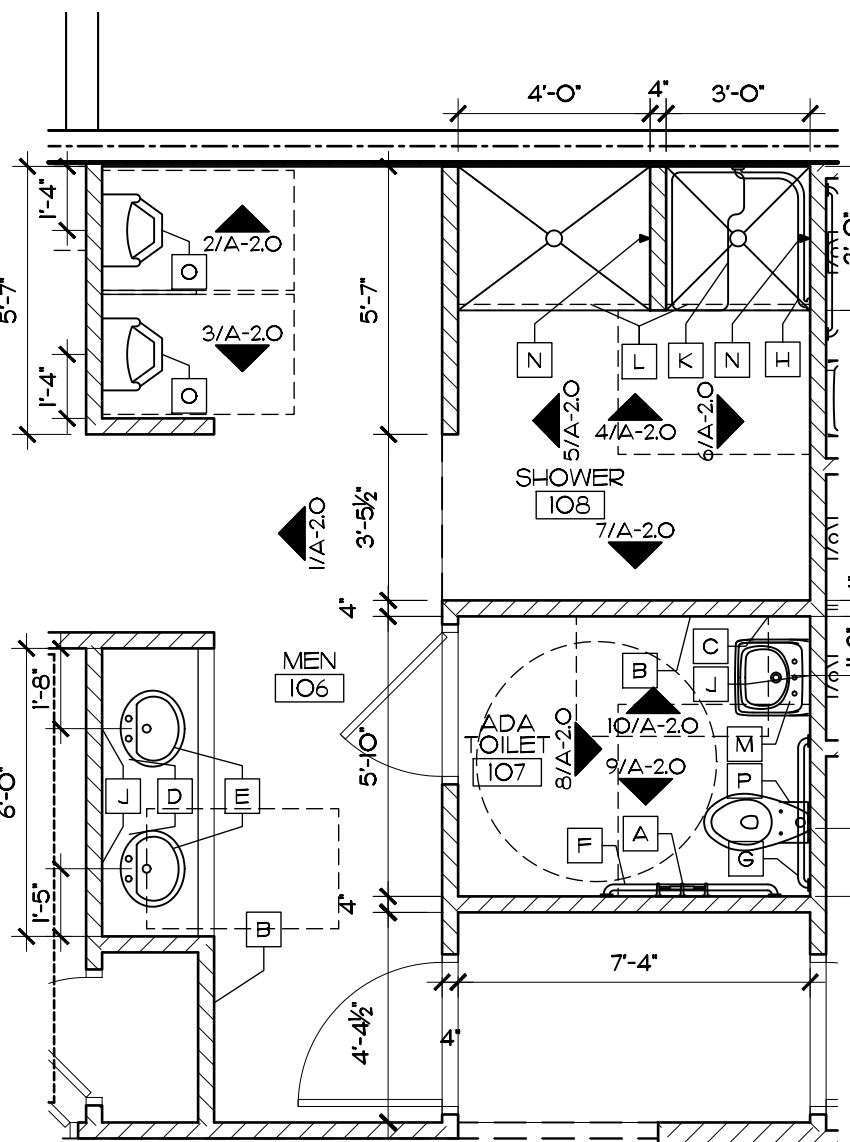
14 WOMEN #116
SCALE: 3/8"=1'-0"



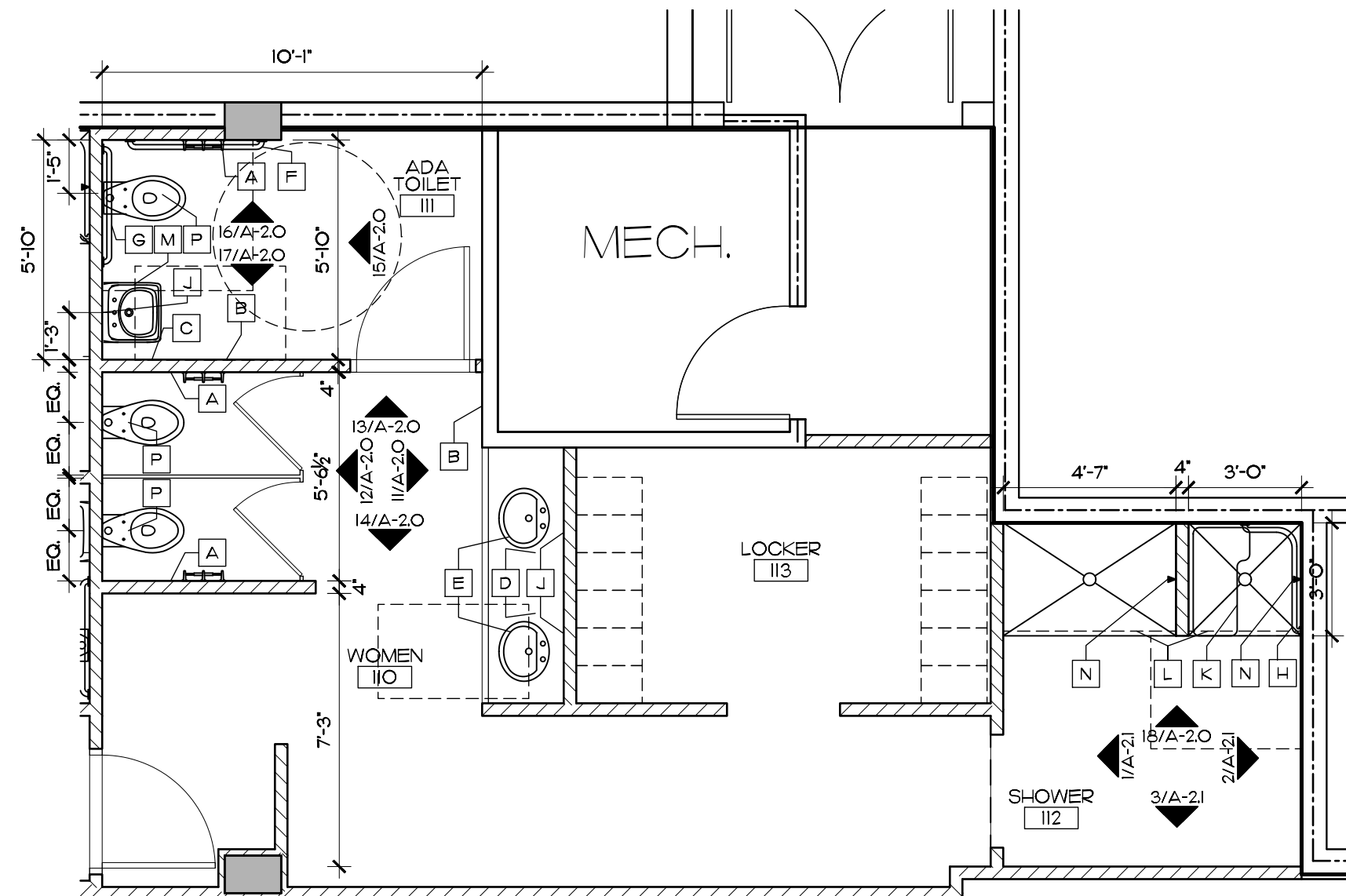
15 ADA #111
SCALE: 3/8"=1'-0"



16 ADA #111
SCALE: 3/8"=1'-0"



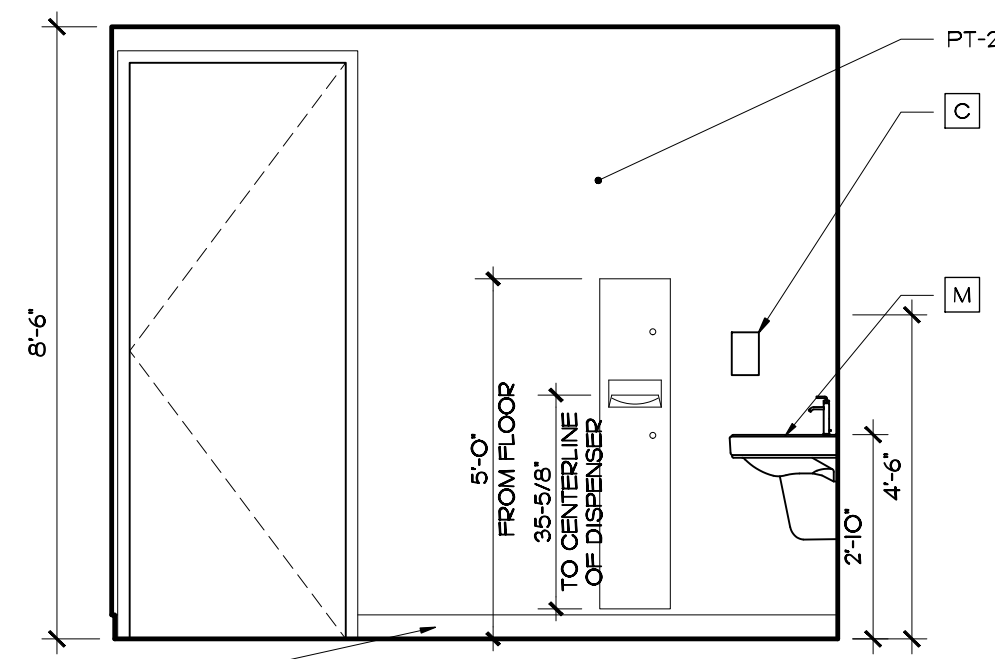
20 ENLARGED PLAN
MEN #106
SCALE: 1/4"=1'-0"



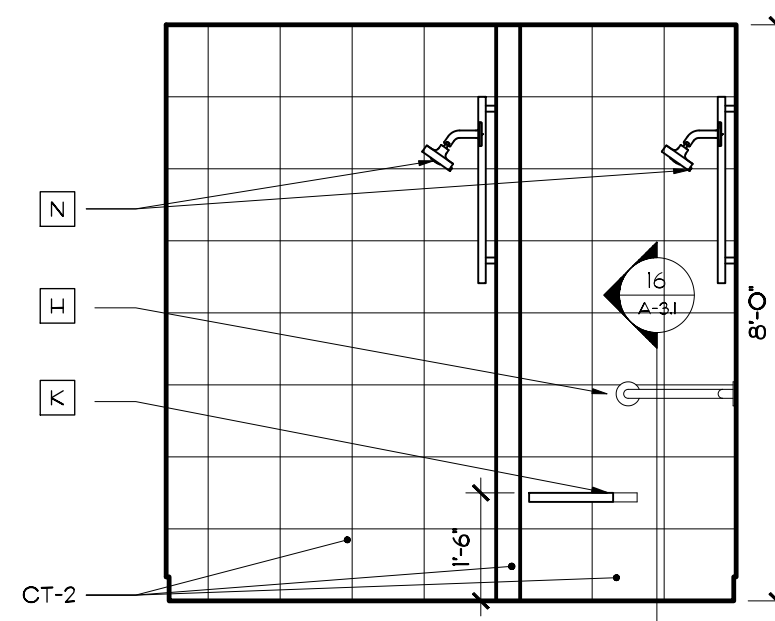
21 ENLARGED PLAN
WOMEN #116
SCALE: 1/4"=1'-0"

ACCESSORIES

- A DUAL ROLL TOILET TISSUE DISPENSER BY BRADLEY MODEL#5402 - STN. STL.
- B BRADLEY SEMI-RECESSED TOWEL DISPENSER/WASTE RECEPTACLE #2017-10, RVU II-3/4"XW53-5/8"XH3-3/4" - SATIN FINISH.
- C BRADLEY RECESSED SOAP DISPENSER #6437 W/ LATHER VALVE, MOUNT CATCH PLATE BELOW VALVE. MOUNTING HEIGHT 40" TO TOP OF UNIT
- D TCC- ONE SHOT FOAM COUNTER MOUNTED SOAP DISPENSER - TOUCH-FREE - CHROME
- E KOHLER RIM MOUNTED SINK - "CANTON" K-2257 VITREOUS CHINA - COLOR WHITE, W/ CHICAGO FAUCET - 99047933 CG DC DECK MNTD. GOOSENECK SENSOR
- F 42" / 1 1/2" DIA. GRAB BAR - HEAVY DUTY STAINLESS STEEL BY BRADLEY - MODEL# B12
- G 36" / 1 1/2" DIA. GRAB BAR - HEAVY DUTY STAINLESS STEEL BY BRADLEY - MODEL# B12
- H 18" X 30" / 1 1/2" DIA. SHOWER GRAB BAR - HEAVY DUTY STAINLESS STEEL BY BRADLEY - MODEL# B12
- J BOBRIK FRAMELESS STN. STL. MIRROR - B-1556 2436
- K REVERSIBLE PNEUMATIC SHOWER SEAT - SUBMIT SHOP CUT SHEETS FOR ARCHITECTS APPROVAL.
- L SHOWER CURTAIN ROD IN SATIN FINISH - BY BRADLEY MODEL #9536 - CURTAIN RINGS VERIFY OPENING SIZE IN FIELD PRIOR TO PURCHASE.
- M KOHLER WALL HUNG SINK K-1999-R (WHITE) W/ TOTO-TEL56C FAUCET
- N KOHLER SHOWER HEAD, SLIDE BAR - K-850I, K-8524, KOHLER VALVE K-169 SERIES, COLOR: CHROME.
- O ZURN URINALS #25758, 205.00 VITREOUS CHINA-COLOR WHITE-SENSOR OPERATED BATT. POWER FLUSH-1/8 GPF.
- P ZURN TOILET #25660-VITREOUS CHINA-COLOR WHITE W/ SENSOR OPERATED BATT. POWERED FLUSH VALVE #22600AV-DP-VISI



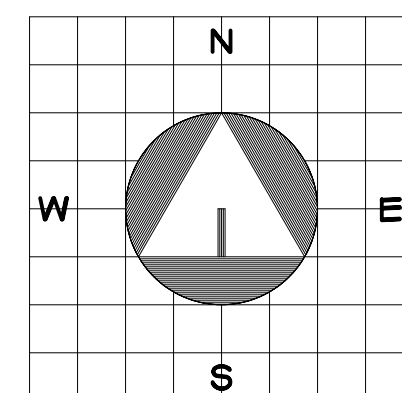
17 ADA #111
SCALE: 3/8"=1'-0"



18 SHOWER #112
SCALE: 3/8"=1'-0"

INTERIOR ELEVATIONS & ENLARGED PLAN

SCALE: 3/8" = 1'-0"



TENANT IMPROVEMENTS FOR: NORTHBIDGE CENTER GYM FACILITY

515 N. FLAGLER DR., SUITE P-100
WPB, FLORIDA



GLIDDEN • SPINA & PARTNERS
ARCHITECTURE • INTERIOR DESIGN, INC.

PHONE: 561.684.6844 • FAX: 561.684.5594 • E-MAIL: info@gspp-architects.com
1401 FORUM WAY, SUITE 100 • WEST PALM BEACH, FLORIDA 33401
FL License #AA26001602

Benjamin John Glidden, III #AR13419
Kath M. Spina #AR13419

sheet title: & ENLARGED PLAN
file name: NGY-ELEV.DWG

revisions:
project no: 11040
date: 02/14/12
drawn by: BUJOE
checked by: KS

A-2.0