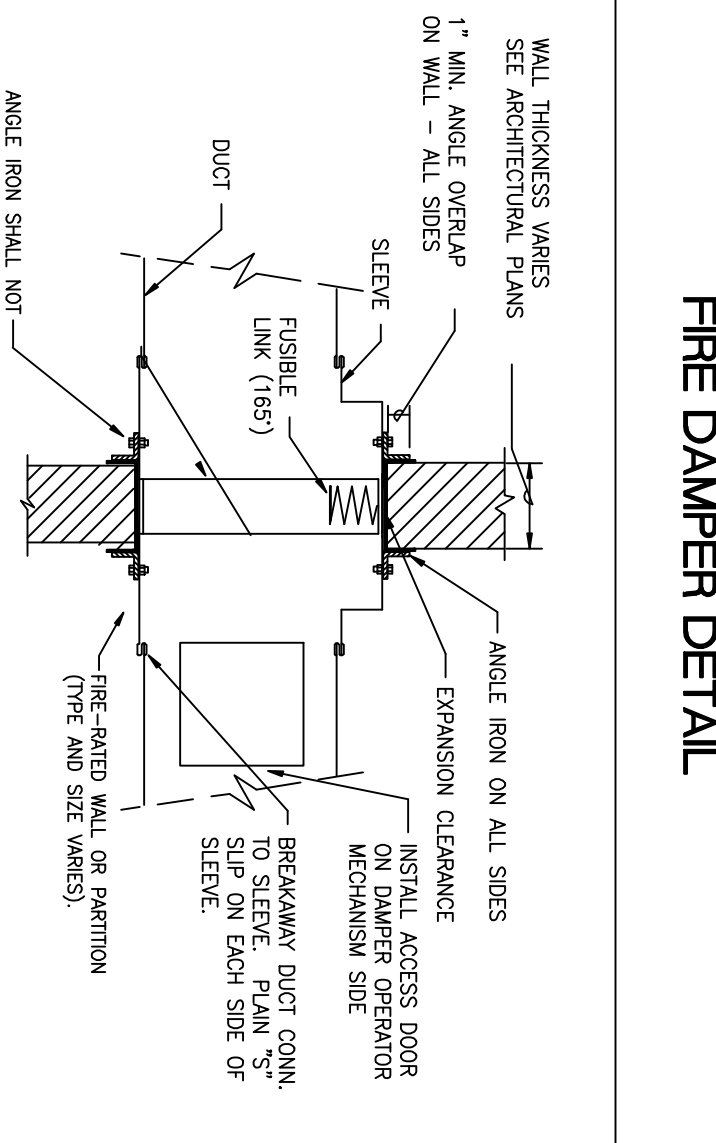


MECHANICAL DEMO PLAN
SCALE: 1/4" = 1'-0"

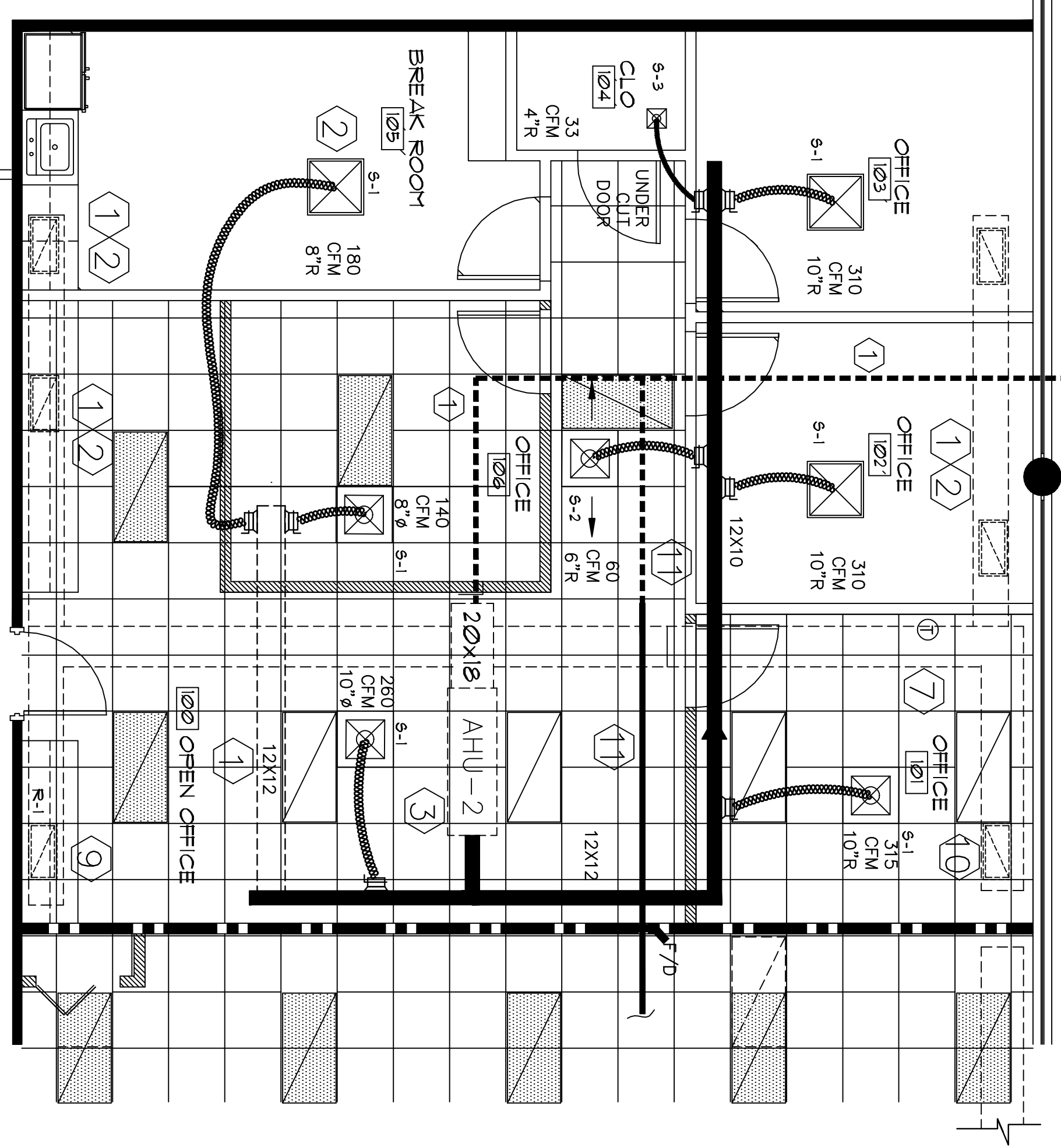
- PLAN SPECIFIC MECHANICAL NOTES
- ① EXISTING DUCT TO REMAIN. PATCH ANY OPENINGS NO LONGER IN USE
 - ② EXISTING DIFFUSER OR GELLE TO REMAIN. PATCH BALANCE AIR QUANTITY AS NEEDED.
 - ③ EXISTING AIR HANDLING UNIT TO REMAIN.
 - ④ EXISTING AIR HANDLING UNIT TO BE RELOCATED. RELOCATE ASSOCIATED PIPING AND DUCTWORK.
 - ⑤ CUT AND CAP EXISTING DUCT. PATCH ANY OPENINGS NO LONGER IN USE
 - ⑥ NEW SUPPLY DUCT.
 - ⑦ RELOCATE AHU-1 THERMOSTAT TO FUTURE TENANT SPACE. RELOCATE AHU-2 THERMOSTAT TO OLD AHU-1 THERMOSTAT LOCATION.
 - ⑧ REMOVE EXISTING SUPPLY DUCT.
 - ⑨ NEW 24X12 T-BAR RETURN AIR GRILLE.
 - ⑩ RELOCATED 24X12 T-BAR RETURN AIR GRILLE.
 - ⑪ EXTEND OUTSIDE AIR DUCT TO FUTURE TENANT SPACE. PROTECT ALL RIRE RATED WALLS AND PARTITIONS.



ANGLE IRON & FASTENER DIMENSIONS

DUCT DIMENSION (OR DIA. OR OTHER SECT. DIM)	MINIMUM GAUGE
0 - 12"	28
13 - 30"	24
31 - 54"	22
55 - 84"	20
85" - UP	18

- NOTES:
1. WHERE MANUFACTURER'S INSTALLATION INSTRUCTIONS EXCEED THE REQUIREMENTS OF THIS DETAIL, THEY SHALL BE FOLLOWED.
 2. THE DAMPER SHALL BE INSTALLED IN ACCORDANCE WITH THE INSTRUCTIONS EXCEPT FOR DAMPER OPERATION MECHANISM.
 3. VERTICAL DAMPER SHOWN - HORIZONTAL INSTALLATION SIMILAR
 4. DAMPER BLADES SHALL BE CUT OFF ANTISTREAM TYPE "A", "B", "C" OR "E". SMOKE FIRE DAMPER AND HEAT STOP COUPLER - AND EDITION PAGE 9 WHEN DUCT DIMENSIONS REQUIRE MULTIPLE DAMPER SECTIONS. TYPE "Z" MAY BE USED.
 5. ACCESS DOOR OR INSULATED OR UNED. PROVIDE INSULATED ACCESS DOOR.
 6. ACCESS DOOR SHALL BE 12" X 12" OR LARGER IF REQUIRED FOR FUSIBLE LINK REPLACEMENT.
 7. TYPE "F" FIRE DAMPERS (BLADES IN AIR STREAM) MAY BE SUBSTITUTED FOR TYPE "A" OR "B" WHERE VELOCITIES ARE UNDER 500 FPM IN FGM PROTECTIVE OVERLAP SHALL BE MAINTAINED.
 8. PROVIDE MECHANIC OPERATOR AND TIE INTO BUILDING PENETRANTS



MECHANICAL PLAN
SCALE: 1/4" = 1'-0"



1168 UGF

AIR-CONDITIONING SYSTEM HAS BEEN DESIGNED BY AN INSULATOR CERTIFIED UNDER CHAPTER 499.

HVAC DESIGN BY:
Altman Brothers, LLC

Altman Brothers, LLC
19150 134th Ave SW, Suite 200
Falmouth, Florida

BRYAN ALTMAN CA0033597
QUALIFIER FOR ALTMAN BROTHERS, LLC

DATE

WHERE AND IF APPLICABLE THE FOLLOWING CODES WERE USED IN THE DESIGN OF THIS PROJECT:
2007 FLORIDA MECHANICAL CODE - INCLUDING 2008 AMENDMENTS
EXISTING BUILDING BUILDING PLUMBING AND MECHANICAL CODES
2008 NATIONAL ELECTRICAL CODE
2007 FLORIDA FIRE PREVENTION CODE (INCLUDING IBCA 1 AND 101 2008 EDITIONS)

PROJECT NAME/LOCATION:
PRIME GROUP INSURANCE
300 AVENUE OF THE CAJONS
SUITE 150
PALM BEACH GARDENS, FL

DATE:
BY:
DATE:

THESE DRAWINGS ARE BASED ON EXISTING DRAWINGS WHEN AVAILABLE. FIELD INSPECTION OF AS BUILT CONDITIONS AND OTHER INFORMATION IS REQUIRED TO VERIFY THE ACCURACY OF THE INFORMATION GATHERED WITHOUT DESTROYING THE INVESTIGATOR'S CUTTING INTO EXISTING SURFACES TO REVEAL STRUCTURE. PIPING, DUCTWORK, ETC. SHALL BE SHOWN ON INFORMATION DRAWINGS. BASE: DBS ON INFORMATION THAT EXISTING CONDITIONS ARE NOT AS ANTICIPATED OR AS SHOWN ON THESE DRAWINGS. THE CONTRACTOR SHALL BE RESPONSIBLE FOR VERIFYING THE ACCURACY OF THE INFORMATION AND THE PRICE WILL BE ADJUSTED UP OR DOWN TO REFLECT THE DISCREPANCY.

JOB #: PRIME GROUP INS
DATE: 6-16-2011
SCALE: VARIES
DRAWN BY: JMB/KKA

ISSUED: _____
REVISIONS: _____

SHEET NO.:
OF 2