

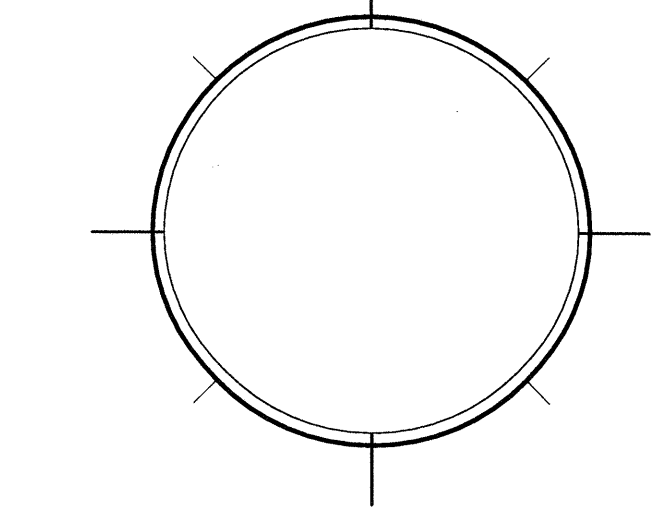
DRAWING INFO	
DATE	1-29-11
SCALE	VARIABLES
DESIGNED BY	MESA
DRAWN BY	MESA
PROJECT #	111608

REVISIONS AND ISSUE

NO.	DATE	ISSUE NOTE

OWNERSHIP AND USE OF THESE DOCUMENTS & SPECIFICATIONS AS INSTRUMENTS OF SERVICE ARE AND SHALL REMAIN THE PROPERTY OF THE ARCHITECT. WHETHER THE PROJECT THEY ARE MADE FOR IS EXECUTED OR NOT, THEY SHALL NOT BE USED BY THE OWNER OR OTHERS ON OTHER PROJECTS OR FOR ADDITIONS ON OTHER PROJECTS BY OTHERS, EXCEPT BY AGREEMENT IN WRITING WITH ARCHITECT

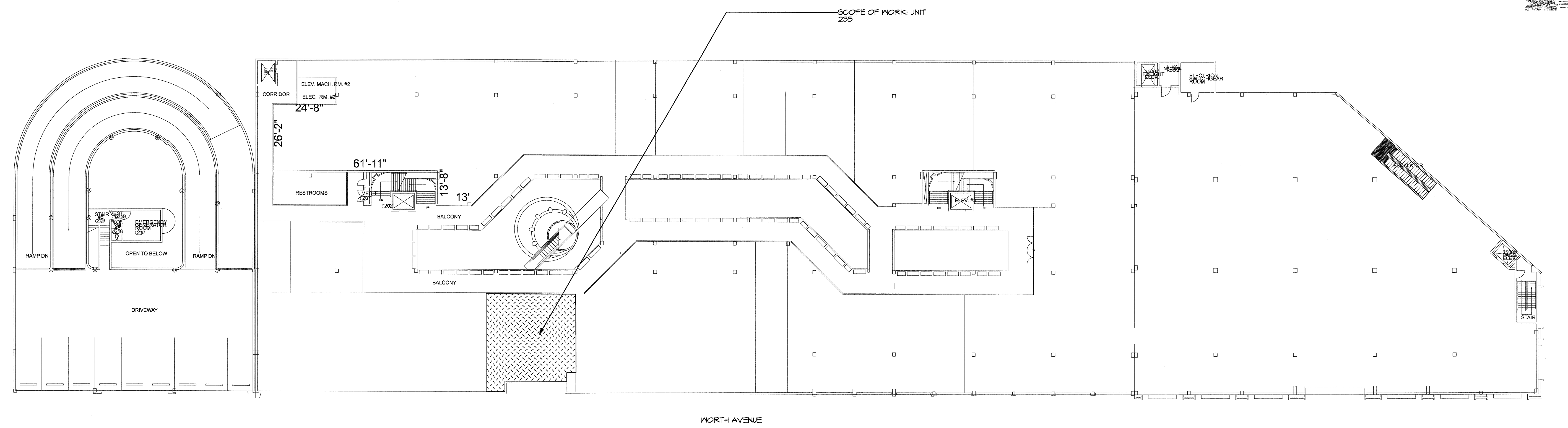
SEAL:



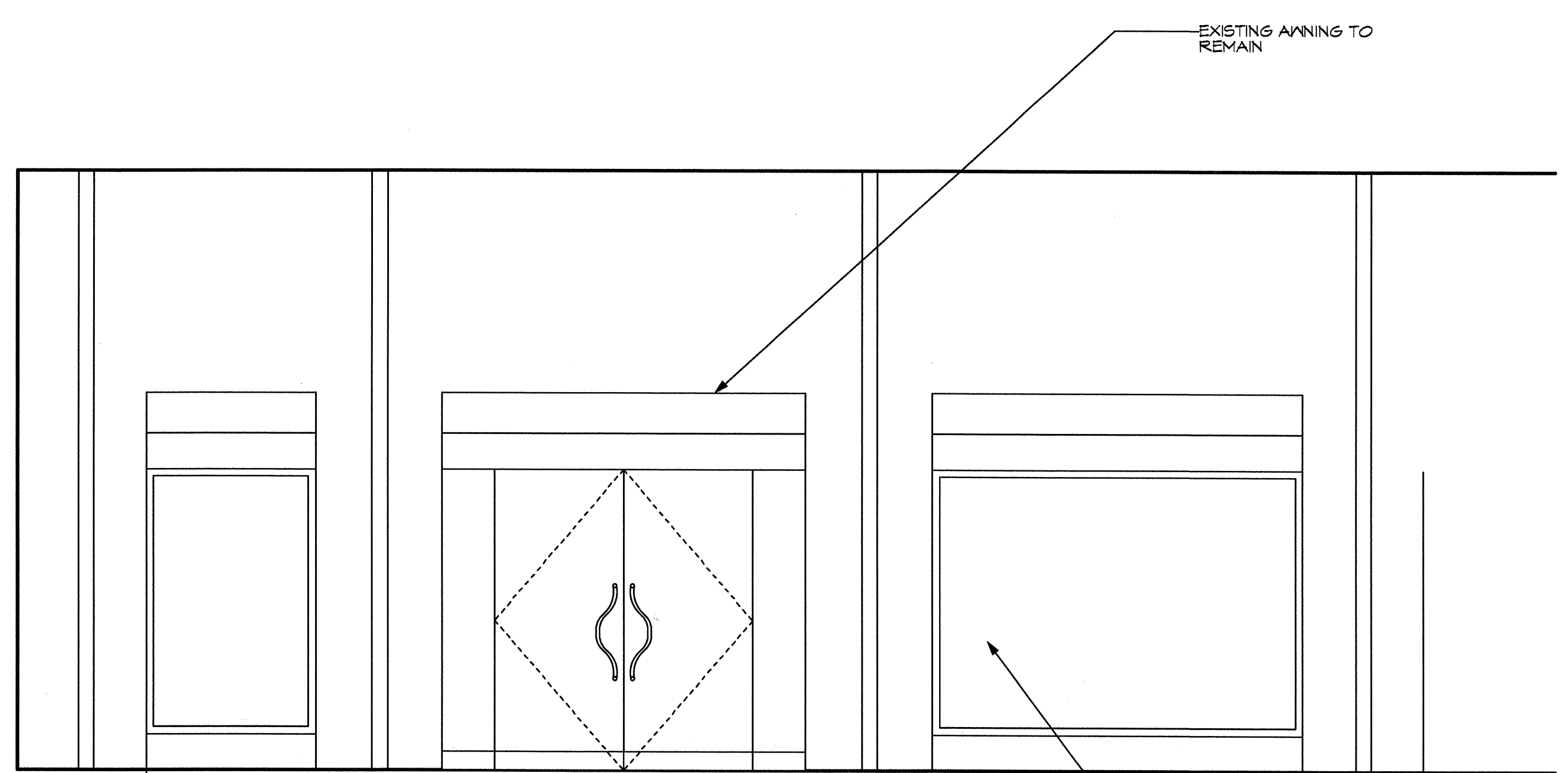
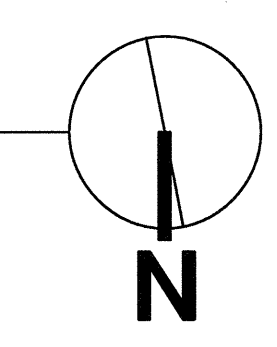
SHEET

A0

OF:



1 SITE PLAN
Scale: 1" = 20 FT



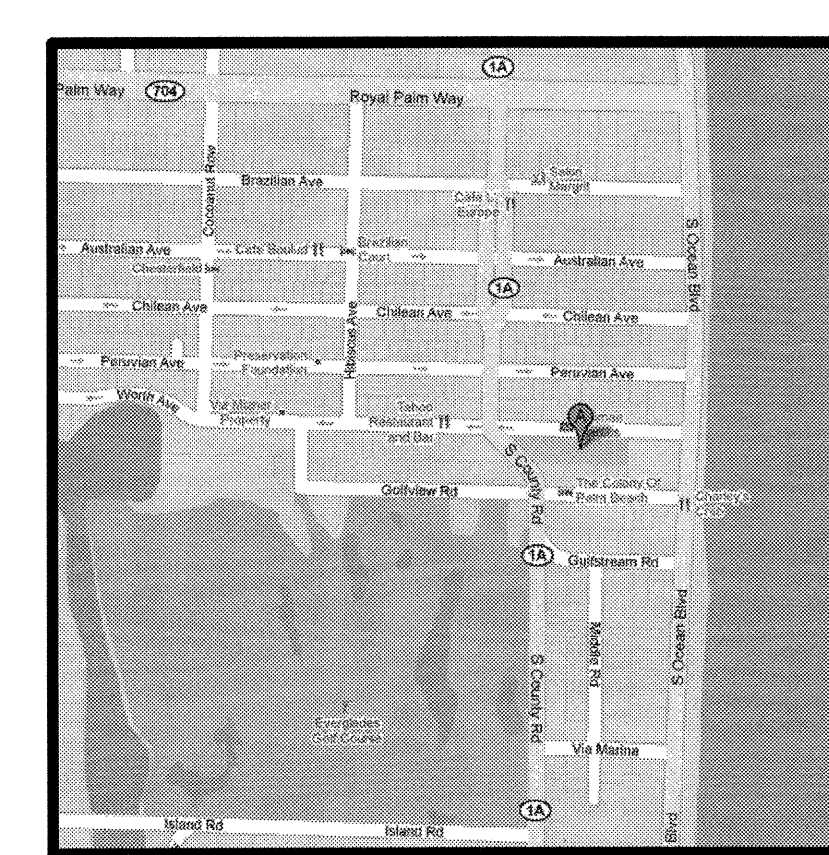
3 EXISTING STOREFRONT ELEVATION
AO Scale: 3/8" = 1'-0"

SCOPE OF WORK:
1. TENANT IMPROVEMENT

NOTE TO CONTRACTOR:
THESE DOCUMENTS ARE DEVELOPED AND DELIVERED AS AN INSTRUMENT TO CONSTRUCT AS A "WHOLE" WHEN A PERMIT IS ISSUED. IT IS THE RESPONSIBILITY OF THE CONTRACTOR TO THOROUGHLY REVIEW AND CROSS REFERENCE DOCUMENT INFORMATION BETWEEN ALL SHEETS AND ALL PERMITS. FAILURE TO PROVIDE SUBCONTRACTORS WITH ALL INFORMATION, DURING BIDDING AND CONSTRUCTION, AS A "WHOLE" SHALL NOT CONSTITUTE ADDITIONAL FEES IN THE FORM OF CHANGE ORDERS.

PROJECT INFORMATION	
JURISDICTION	PALM BEACH
ZONING	RETAIL
CONSTRUCTION TYPE	VB
USE GROUP	MERCANTILE
APPLICABLE CODES	2007 FBC WITH 2009 REVISIONS
LEVEL OF ALTERATION	LEVEL TWO

SHEET	DRAWING TITLE
AO	SITE PLAN
A1	FLOOR PLAN



DRAWING INFO

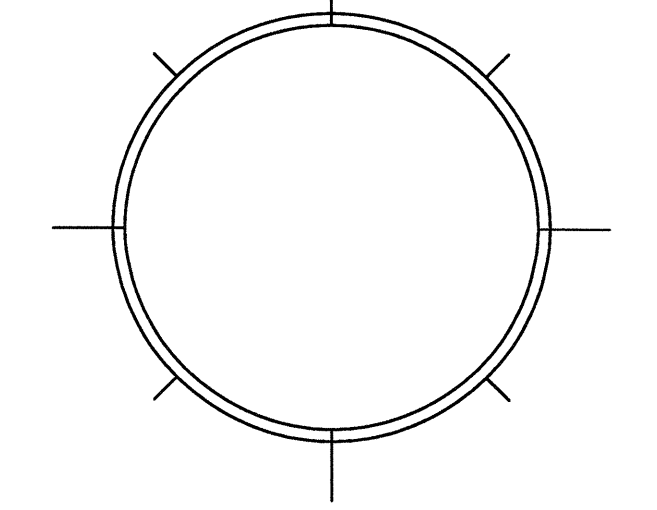
DATE	1-29-11
SCALE	VARIABLES
DESIGNED BY	MESA
DRAWN BY	MESA
PROJECT #	111608

REVISIONS AND ISSUE

NO.	DATE	ISSUE NOTE

OWNERSHIP AND USE OF THESE DOCUMENTS & SPECIFICATIONS AS INSTRUMENTS OF SERVICE ARE AND SHALL REMAIN THE PROPERTY OF THE ARCHITECT WHETHER THE PROJECT THEY ARE MADE FOR IS EXECUTED OR NOT. THEY SHALL NOT BE USED BY THE OWNER OR OTHERS ON OTHER PROJECTS OR FOR ADDITIONS ON OTHER PROJECTS BY OTHERS, EXCEPT BY AGREEMENT IN WRITING WITH ARCHITECT

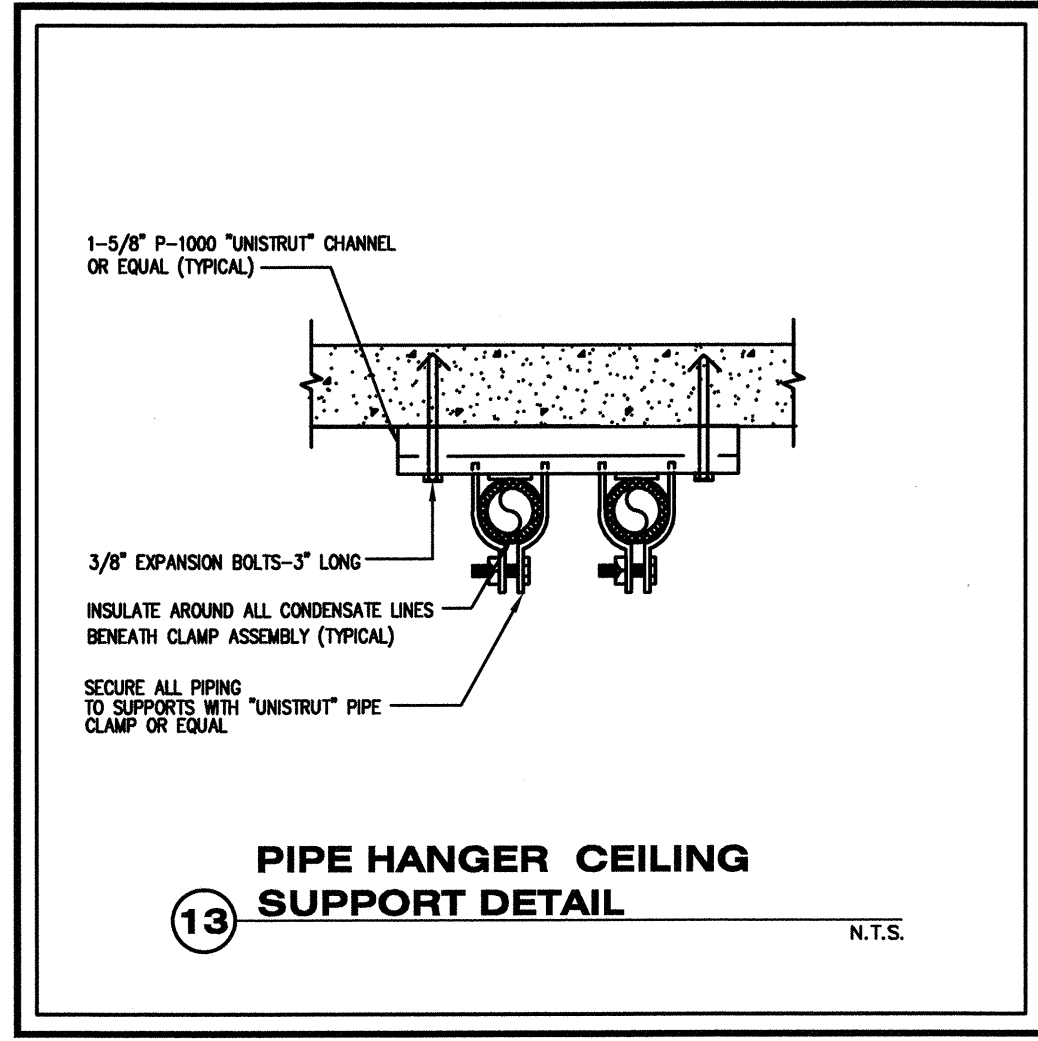
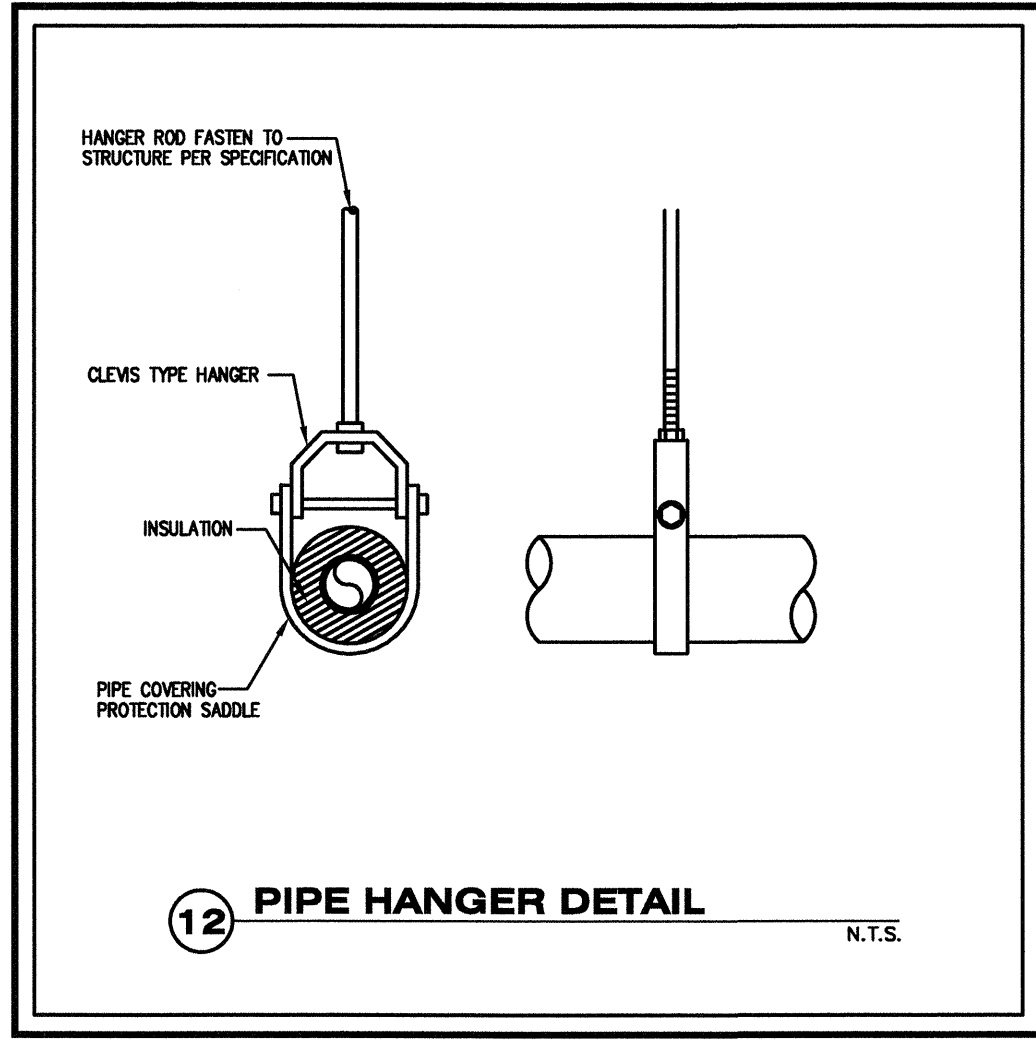
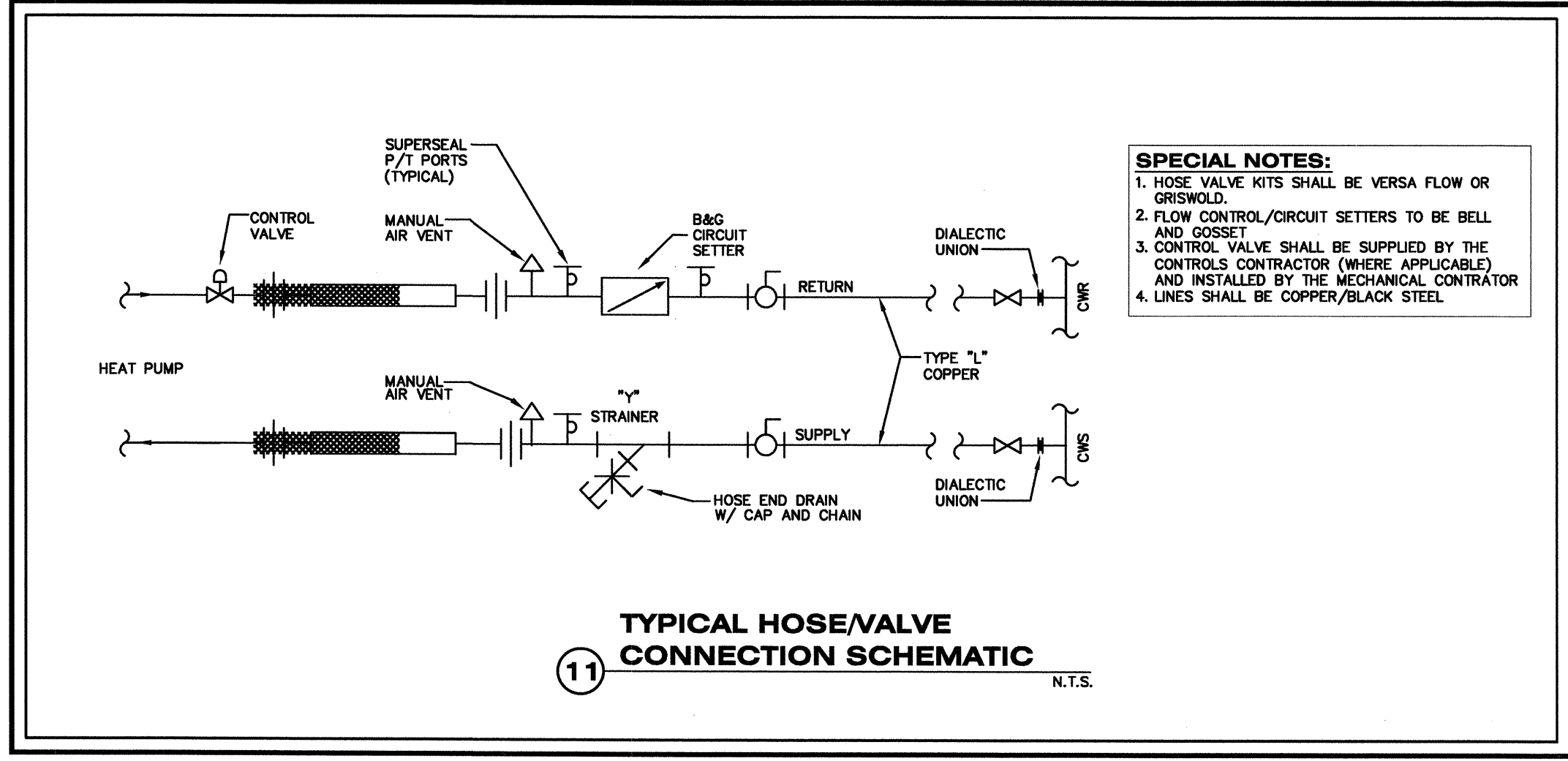
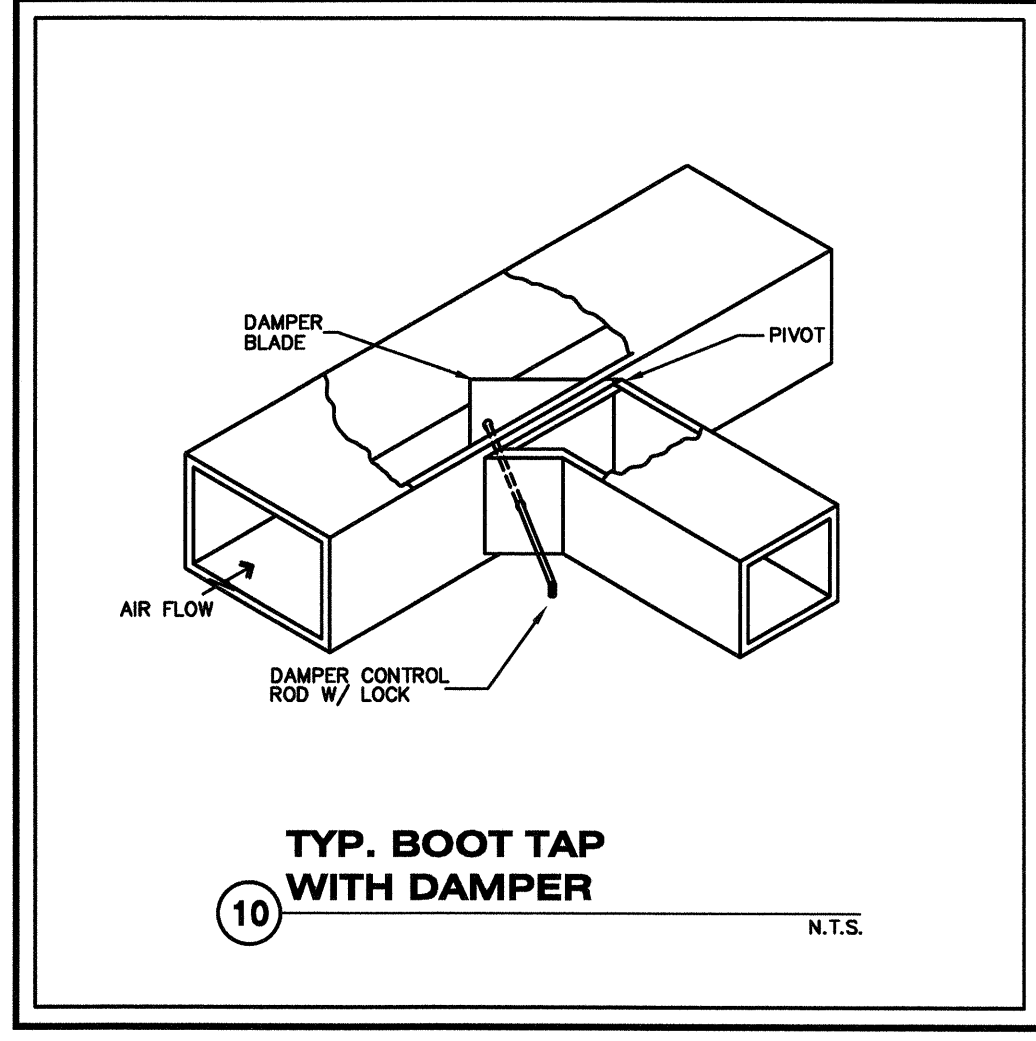
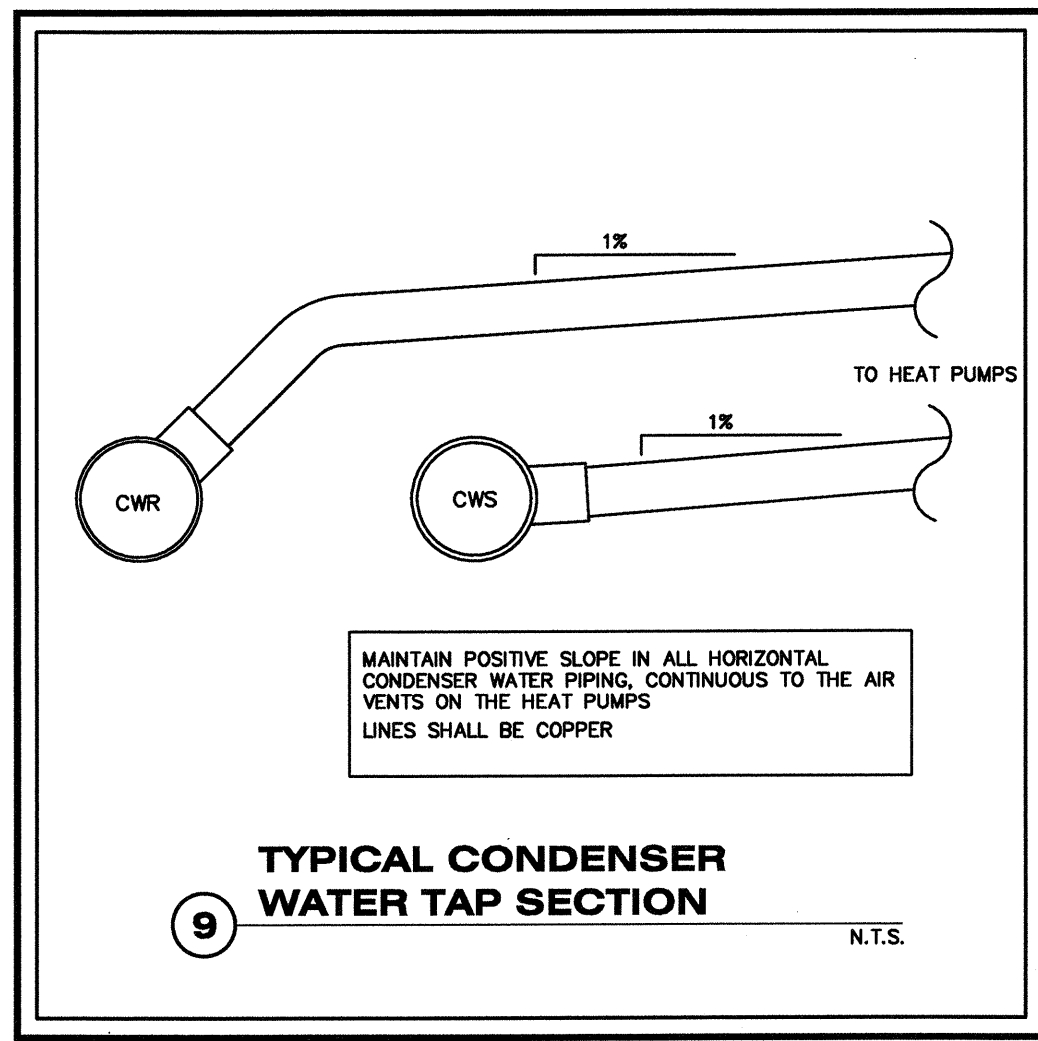
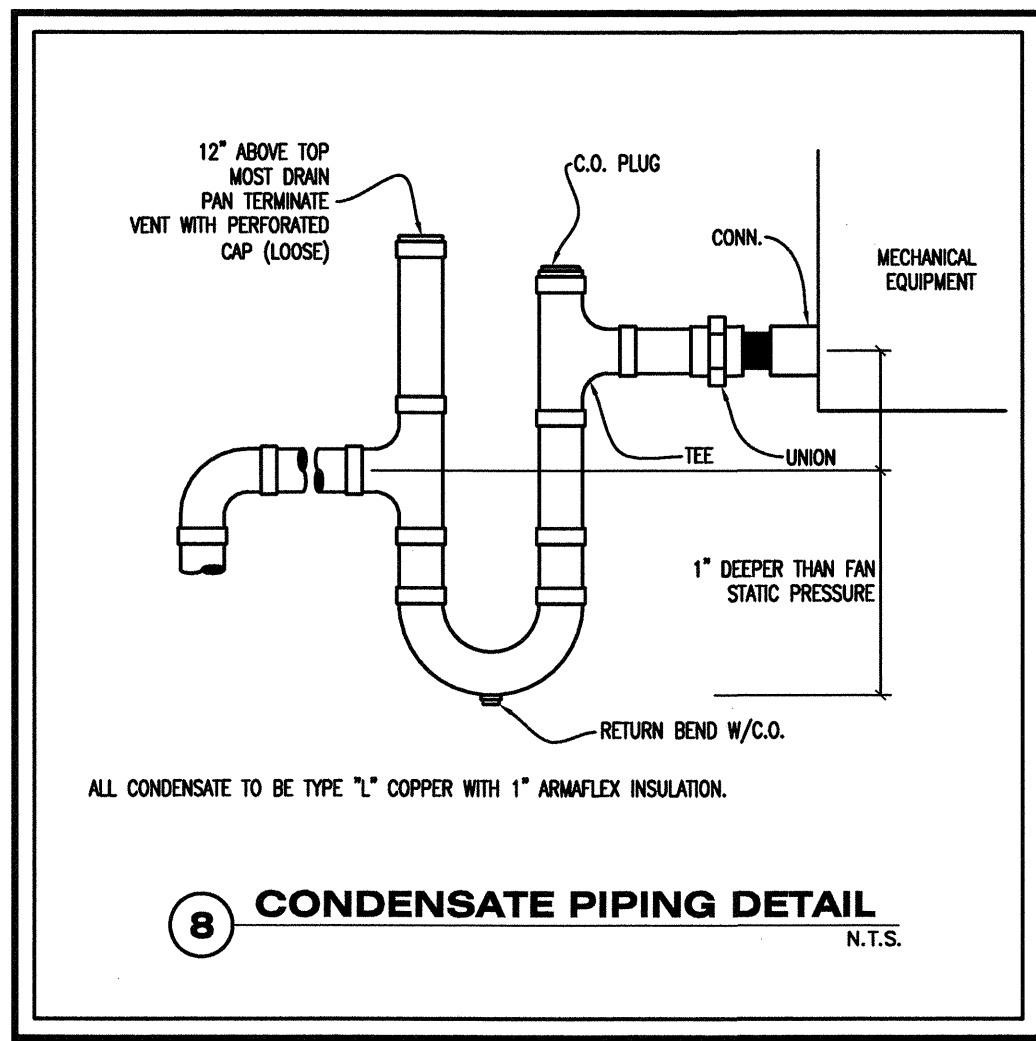
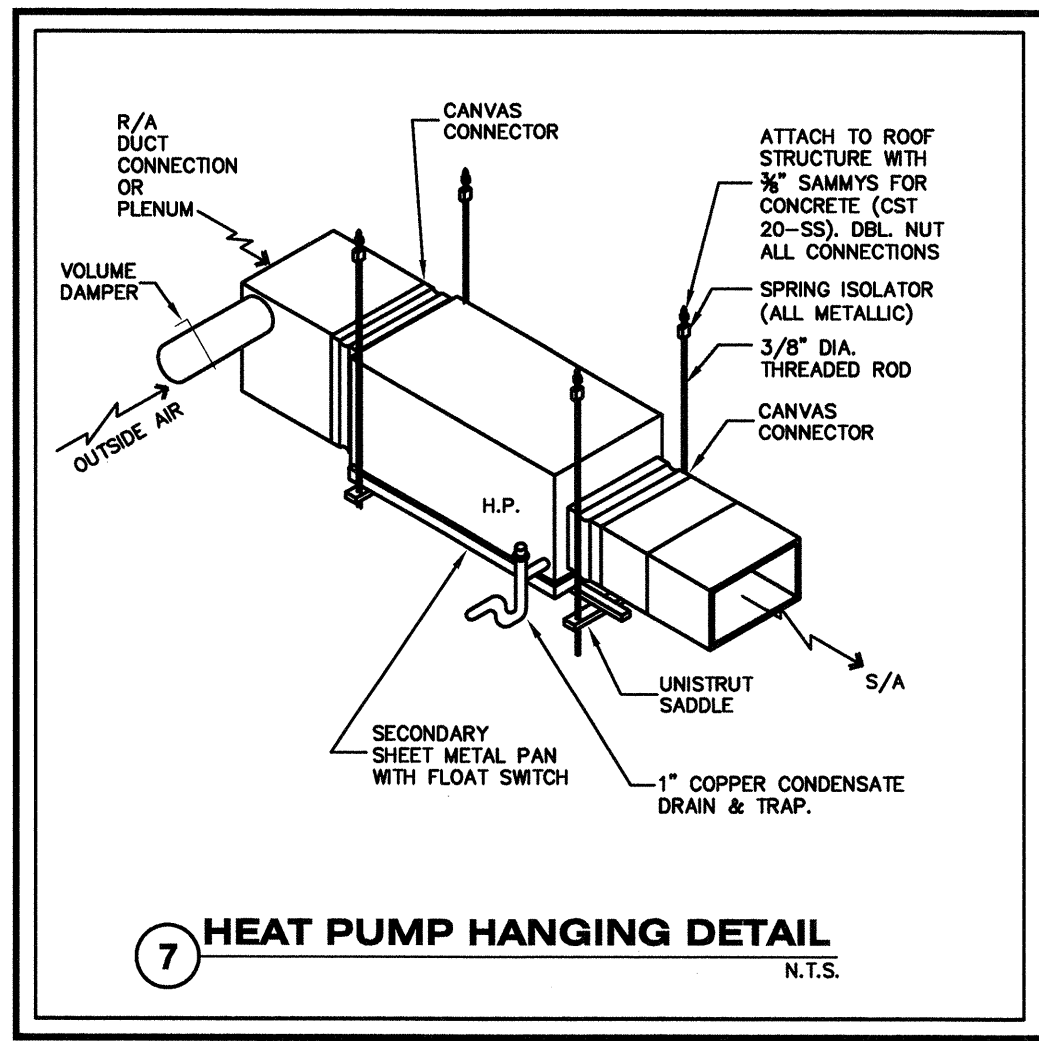
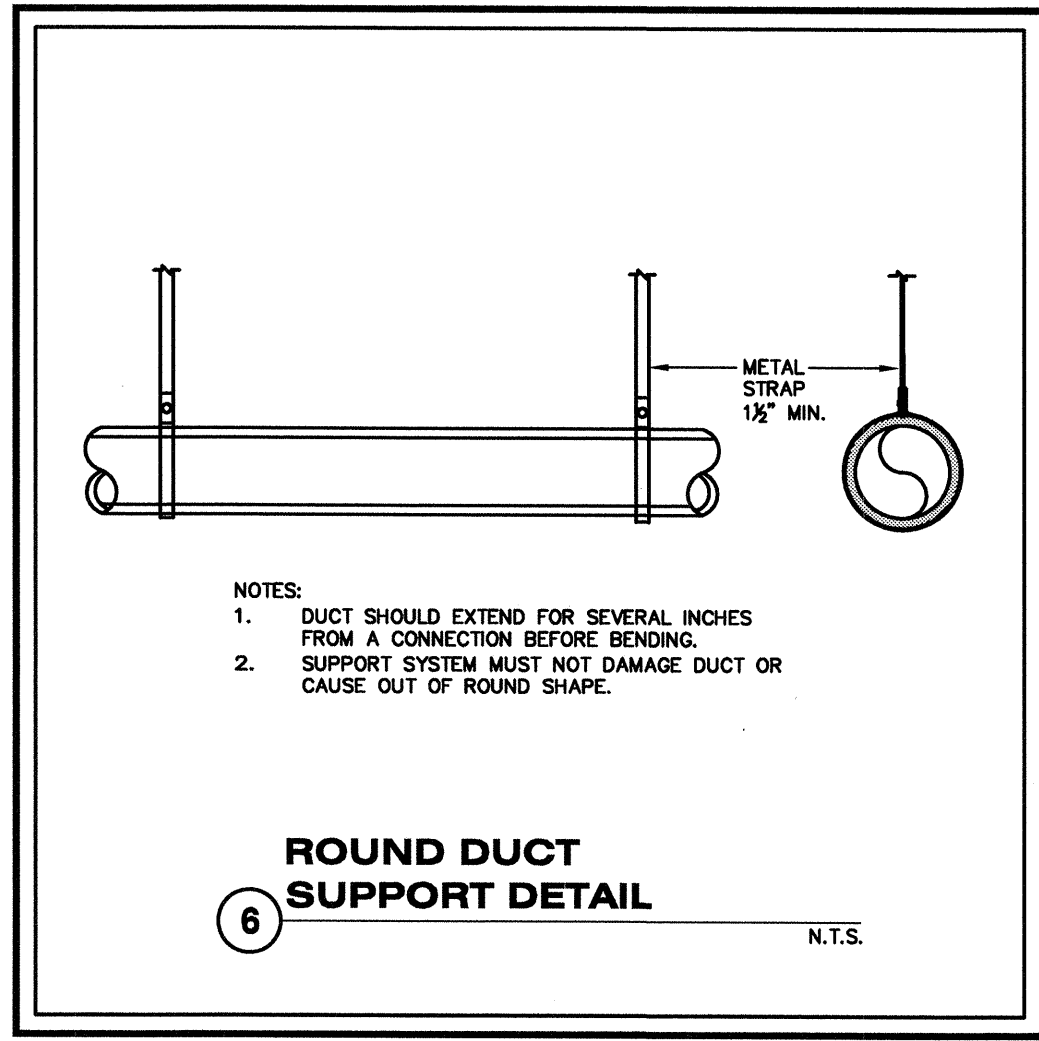
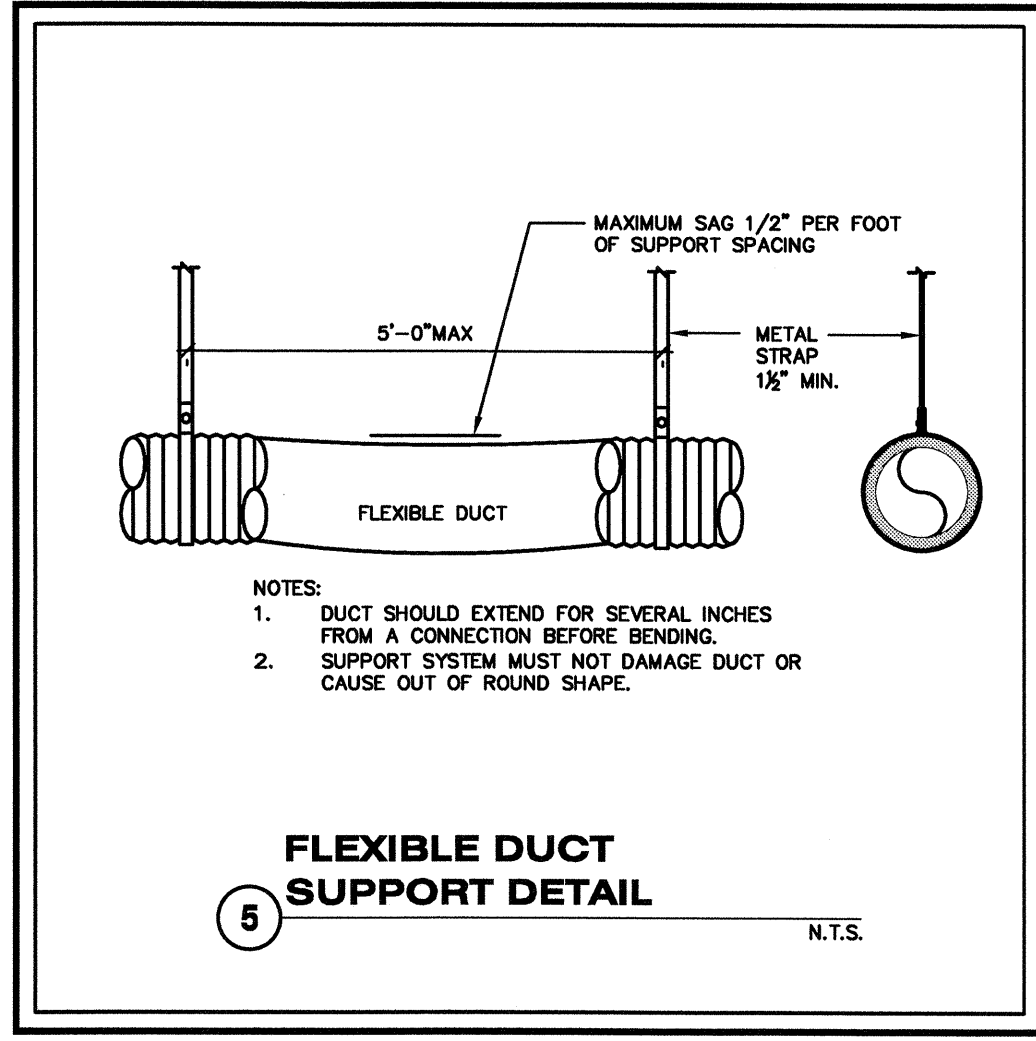
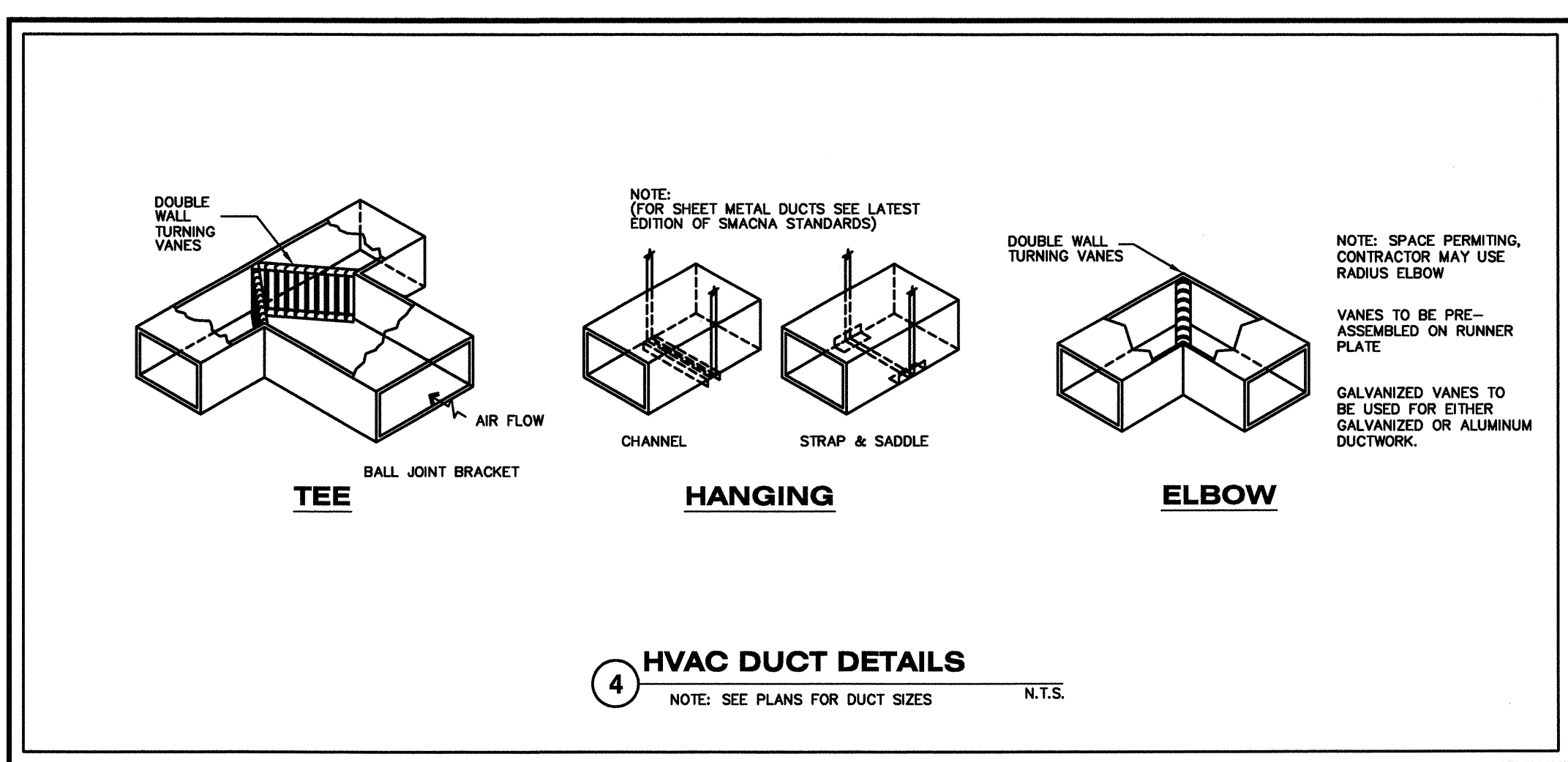
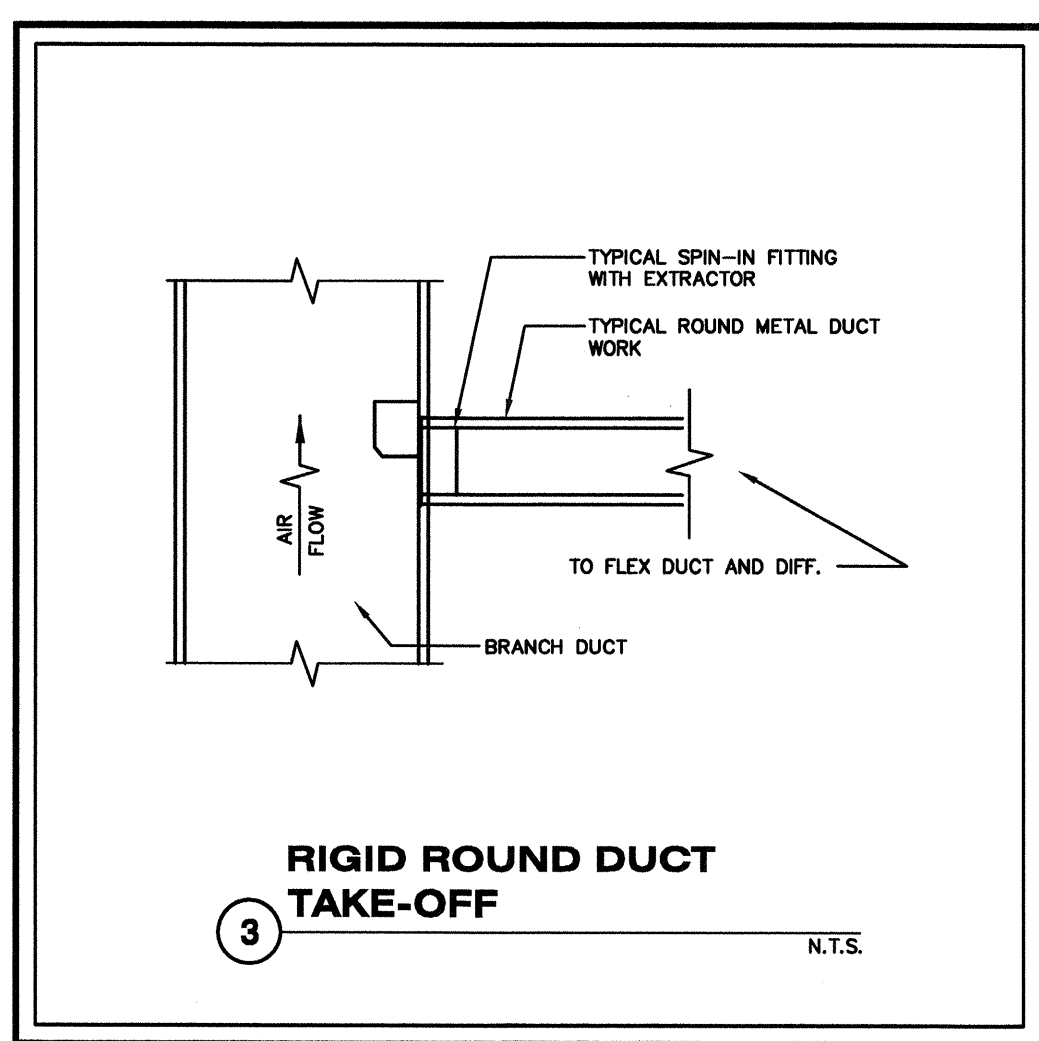
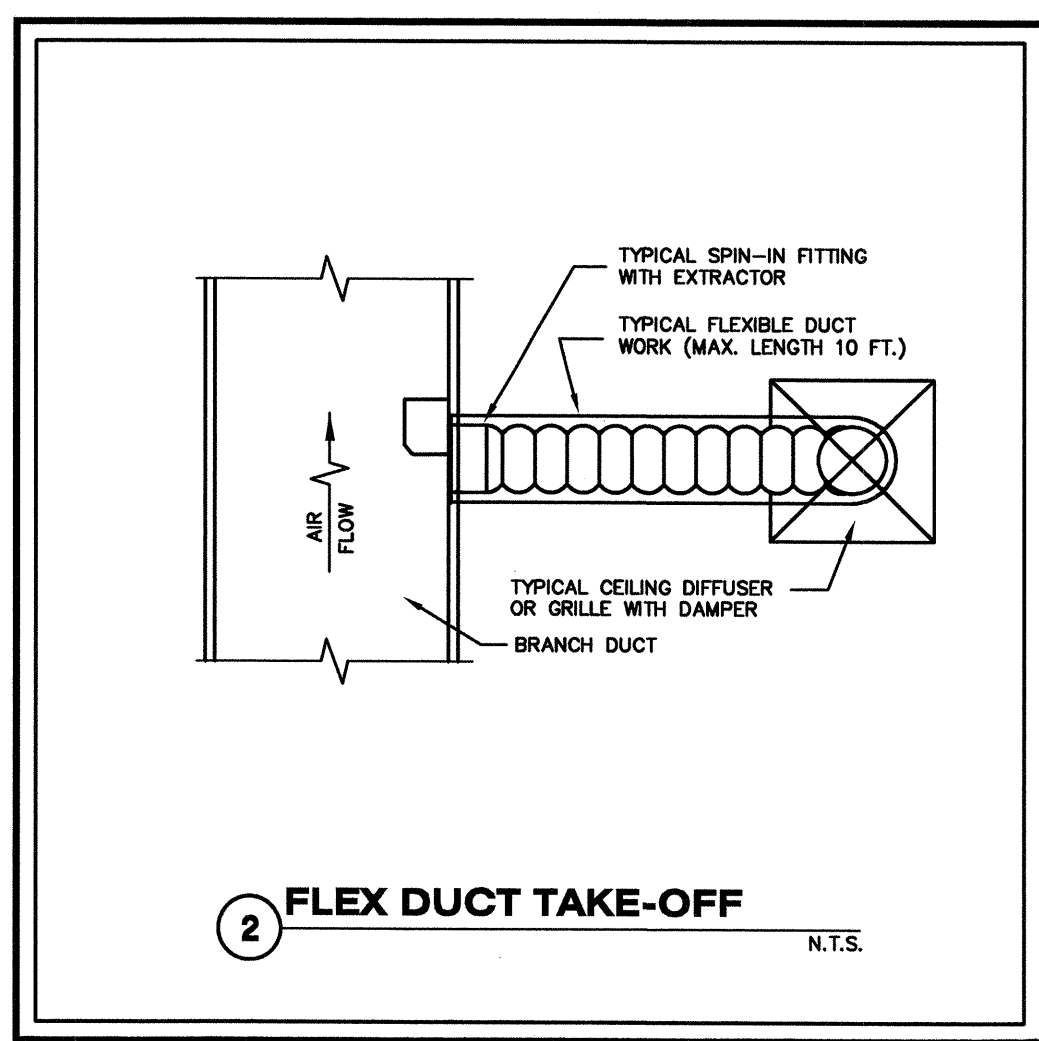
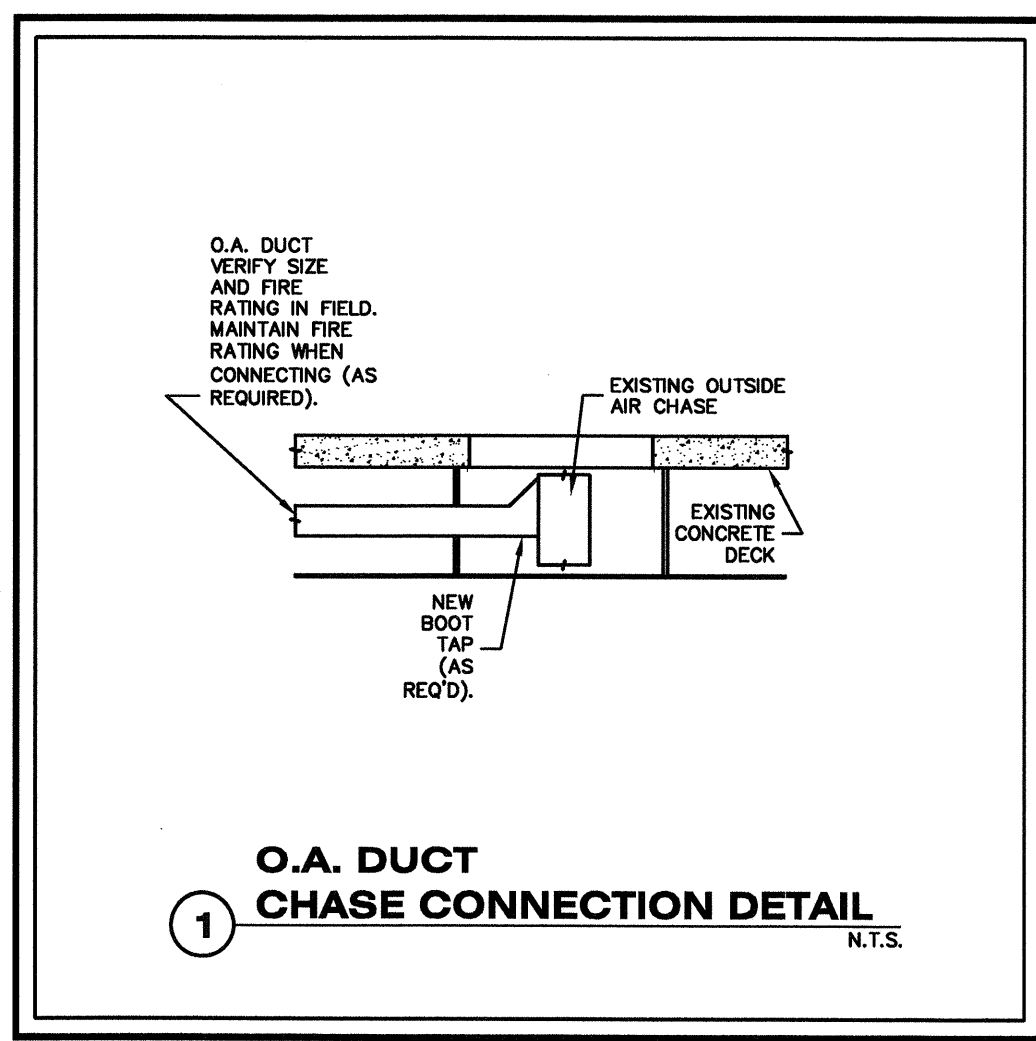
SEAL:



SHEET

M1.1

OF:



RGD JOB# 11-1023

ISSUE & REVISIONS

#	DATE	DESCRIPTION	INL	APP
0	03.10.11	ORIGINAL RELEASE	DJC	RGD

These Drawings are NOT VALID for any purpose which requires the original signature and raised seal of the engineer unless the original signature and raised seal are affixed. Drawings not signed and sealed by the engineer shall not be submitted to any authority or used for any purpose where signed and sealed documents are required.

RGD & ASSOCIATES INC.
CONSULTING ENGINEERS
1003 JUPITER PARK LANE SUITE 2, JUPITER, FL 33458
WWW.RGDENGINEERS.COM

ROBERT DAVENPORT P.E.
FLORIDA P.E. NO. 31902
CERT. OF AUTH. 5454
MECHANICAL ENGINEER

DATE

PROJECT:

SELECTIVE
MODIFICATIONS
TO

150 WORTH AVENUE UNIT 235
PALM BEACH
FLORIDA 33480

TITLE
FLOOR PLAN

DRAWING INFO

DATE 1-29-11

SCALE VARIES

DESIGNED BY MESA

DRAWN BY MESA

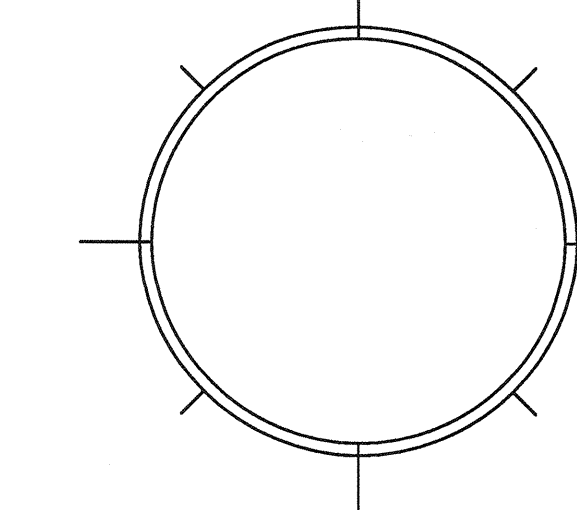
PROJECT # 111608

REVISIONS AND ISSUE

NO.	DATE	ISSUE NOTE
NO.	DATE	REVISION NOTE

OWNERSHIP AND USE OF THESE DOCUMENTS & SPECIFICATIONS AS INSTRUMENTS OF SERVICE ARE AND SHALL REMAIN THE PROPERTY OF THE ARCHITECT WHETHER THE PROJECT THEY ARE MADE FOR IS EXECUTED OR NOT. THEY SHALL NOT BE USED BY THE OWNER OR OTHERS ON OTHER PROJECTS OR FOR ADDITIONS ON OTHER PROJECTS BY OTHERS, EXCEPT BY AGREEMENT IN WRITING WITH ARCHITECT

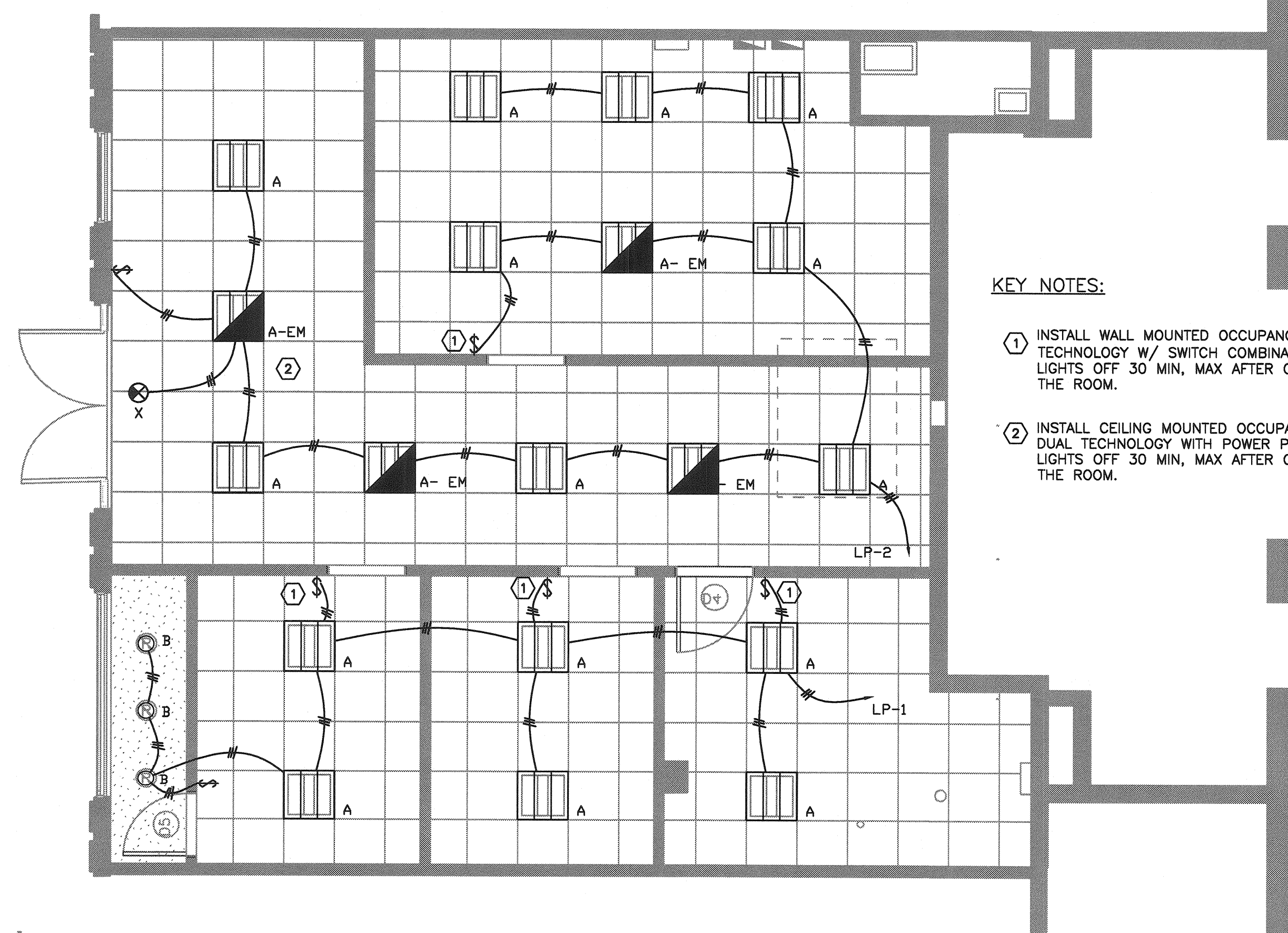
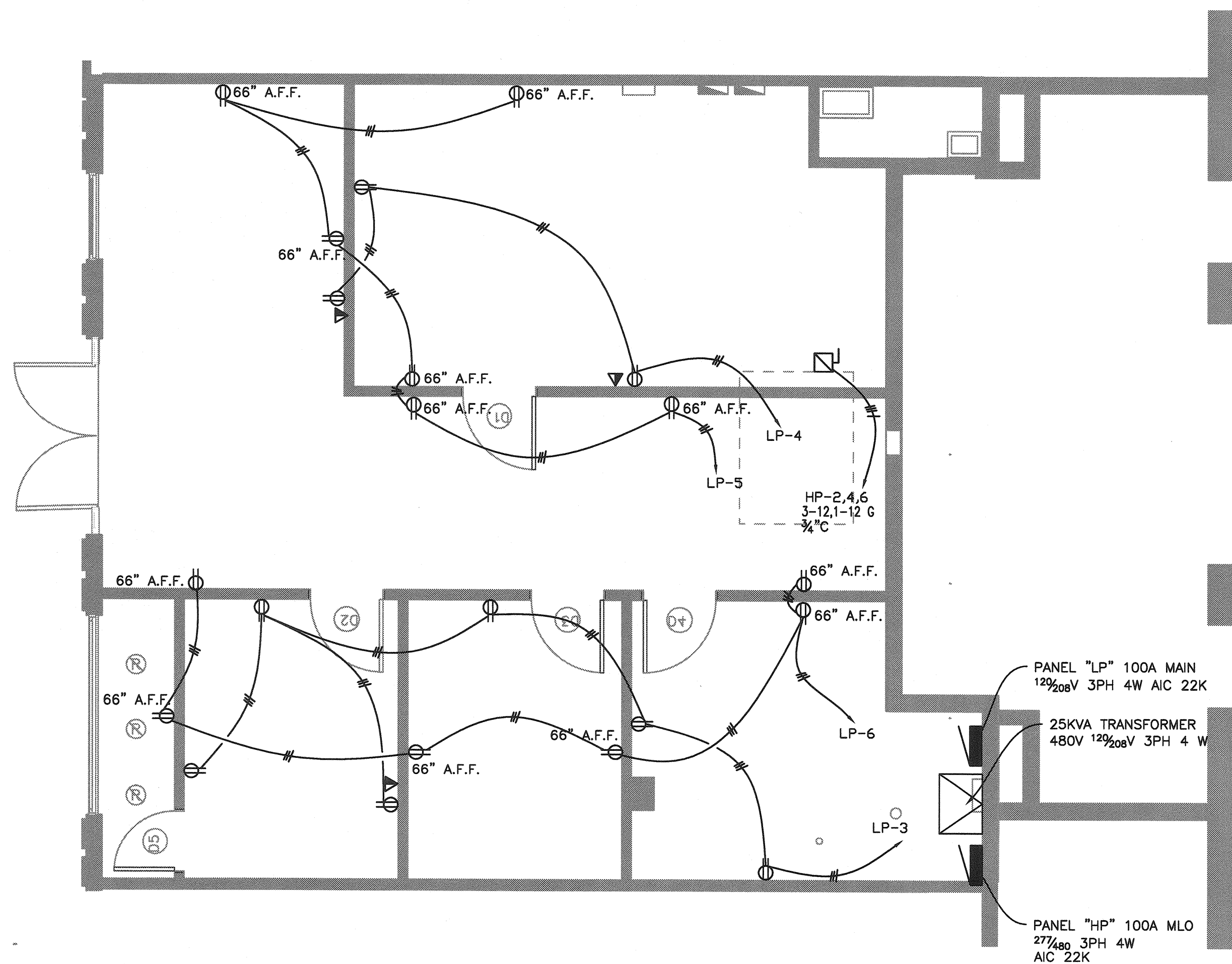
SEAL:



SHEET

E-1

OF:



KEY NOTES:

- INSTALL WALL MOUNTED OCCUPANCY SENSOR DUAL TECHNOLOGY W/ SWITCH COMBINATION TO TURN LIGHTS OFF 30 MIN, MAX AFTER OCCUPANT LEAVES THE ROOM.
- INSTALL CEILING MOUNTED OCCUPANCY SENSOR DUAL TECHNOLOGY WITH POWER PACK TO TURN LIGHTS OFF 30 MIN, MAX AFTER OCCUPANT LEAVES THE ROOM.

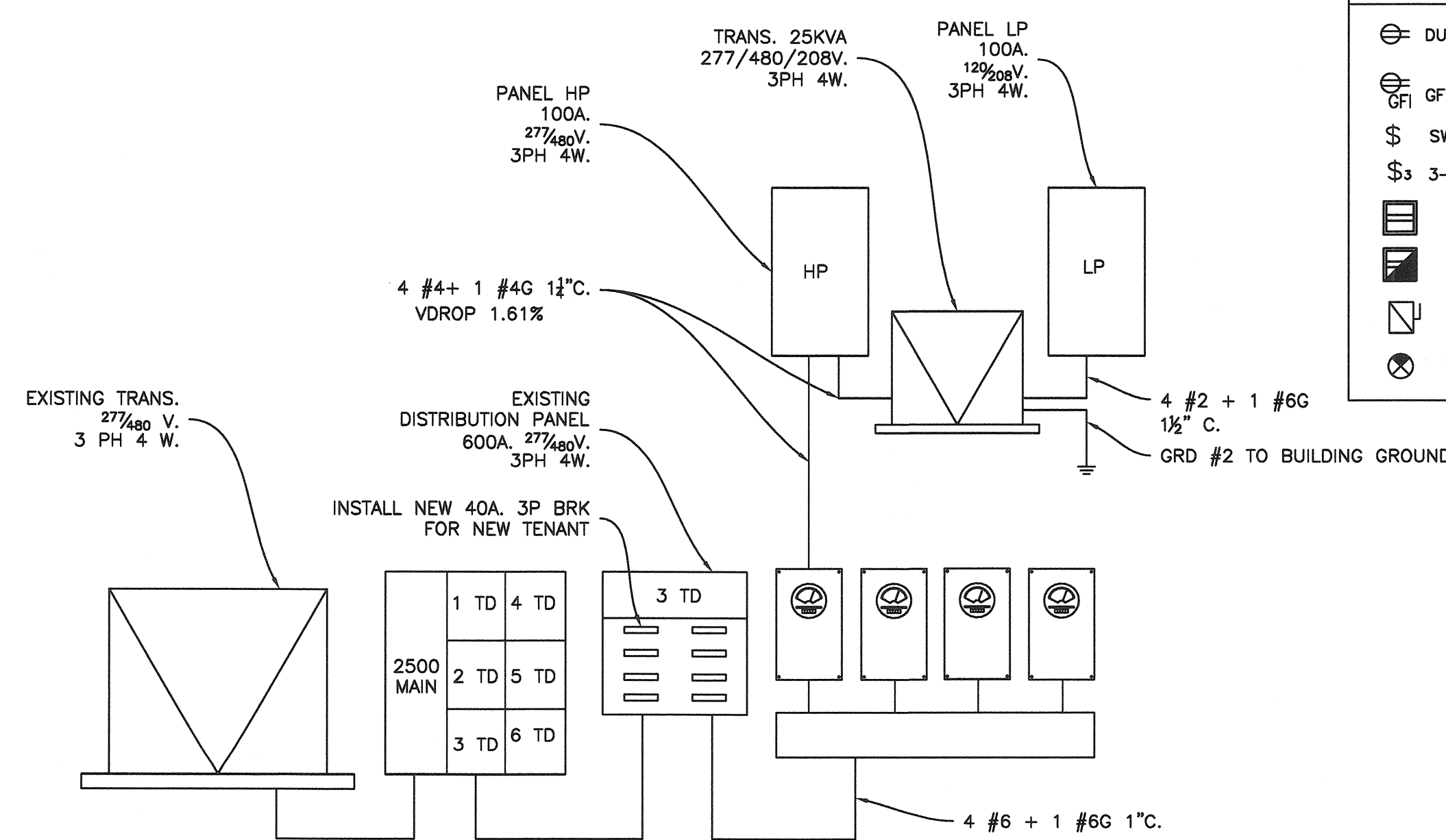
PANEL LP												
VOLTAGE (L-N):			120			ENCLOSURE TYPE:			NEMA 1			
VOLTAGE (L-L):			208			MOUNTING:			SURFACE			
PHASES, WIRES:			3 φ 4 W			AIC RATING (A):			22000			
MINIMUM BUS CAPACITY (A):			100 A			NOTES:						
MAIN O.C. DEVICE (A):			70 A									
CKT NO	DESCRIPTION	TRIP AMPS	POLE	PHASE LOADS (VA)			POLE	TRIP AMPS	DESCRIPTION	CKT NO		
				A	B	C						
1	GENERAL LIGHTING	20	1	609	832		1	20	GENERAL LIGHTING	2		
3	GENERAL USE RECEPTACLES	20	1		1080	540		1	20	GENERAL USE RECEPTACLES	4	
5	SPECIAL USE RECEPTACLES	20	1					1	20	SPECIAL USE RECEPTACLES	6	
7		20	1	0	0			1	20		8	
9		20	1					1	20		10	
11		20	1					1	20		12	
				CONNECTED LOAD PHASE TOTALS (VA)								
				1441	1620	2160						
				CONNECTED LOAD (KVA)			DEMAND FACTOR			DEMAND LOAD (KVA)		
Lighting				1.4			1.25			1.8		
Receptacles (0 - 10 KVA)				3.8			1.00			3.8		
										DEMAND LOAD 5.6 KVA		
										SPARE CAPACITY 19.6 KVA		
										SPARE CAPACITY 54.5 AMPS		
										SPARE CAPACITY 78%		
										PHASE BALANCE		
										A TO B 89%		
										B TO C 75%		
										C TO A 67%		
TOTAL LOAD (AMPS):				5.2			5.6					
				14.5			15.5					

PANEL HP												
VOLTAGE (L-N):			277			ENCLOSURE TYPE:			NEMA 1			
VOLTAGE (L-L):			480			MOUNTING:			SURFACE			
PHASES, WIRES:			3 φ 4 W			AIC RATING (A):			22000			
MINIMUM BUS CAPACITY (A):			100 A			NOTES:						
MAIN O.C. DEVICE (A):			100 A									
CKT NO	DESCRIPTION	TRIP AMPS	POLE	PHASE LOADS (VA)			POLE	TRIP AMPS	DESCRIPTION	CKT NO		
				A	B	C						
1,3,5	PANEL LP via Transformer	30	3	1441	5740		3	20	AHU	2,4,6		
1,3,5	PANEL LP via Transformer	30	3		1620	5740		3	20	AHU	2,4,6	
1,3,5	PANEL LP via Transformer	30	3			2160	5740	3	20	AHU	2,4,6	
7		20	1	0	0			1	20		8	
9		20	1					1	20		10	
11		20	1					1	20		12	
				CONNECTED LOAD PHASE TOTALS (VA)								
				7181	7380	7900						
				CONNECTED LOAD (KVA)			DEMAND FACTOR			DEMAND LOAD (KVA)		
Cooling and Heating				17.2			1.00			17.2		
Lighting				1.4			1.25			1.8		
Receptacles (0 - 10 KVA)				3.8			1.00			3.8		
										DEMAND LOAD 22.8 KVA		
										SPARE CAPACITY 60.3 KVA		
										SPARE CAPACITY 72.6 AMPS		
										SPARE CAPACITY 73%		
										PHASE BALANCE		
										A TO B 88%		
										B TO C 93%		
										C TO A 91%		
TOTAL LOAD (AMPS):				22.4			22.8					
				27.0			27.4					

LIGHTING FIXTURE SCHEDULE	
TYPE	CAT #
A	DAY-BRITE "ARISO" RECESSED CAT 2AVG228-PMW-120-EB
A-EM	SIMILA TO A BUT WITH EMERGENCY BATTERY PACK
B	RECESSED FLUORESCENT CAPRI CAT # CM16-FV32
X	EXIT SIGN WITH BATTERY BACK UP McPHILBEN Cat # 45VL1GC

CODES THAT APPLY TO THIS PROJECT:
2007 FBC W/ 2009 AMMENDMENTS
2008 NFPA-70
2006 NFPA-72
2006-NFPA-101

ELECTRIC SYMBOLS LEGEND	
	DUPLEX RECEPTACLE
	GFI DUPLEX RECEPTACLE
	SWITCH
	3-WAY SWITCH
	RECESSED FLUORESCENT LAMP 2'X2'
	REC. FLUORESC. LAMP W/BATTERY BACK UP
	FUSED DISCONNECT
	EXIT LIGHT



RISER DIAGRAM

E&C Engineers
 Cert. of Auth # 26558
 2755 Vista Parkway Suite 1-3
 West Palm Beach, FL 33411
 Tel (561) 712 1149
 email: ed@ecengineers.com

Eduardo (Ed) Samour, P.E.
 Registered Electrical Engineer
 P.E. # 41186
 Date: _____