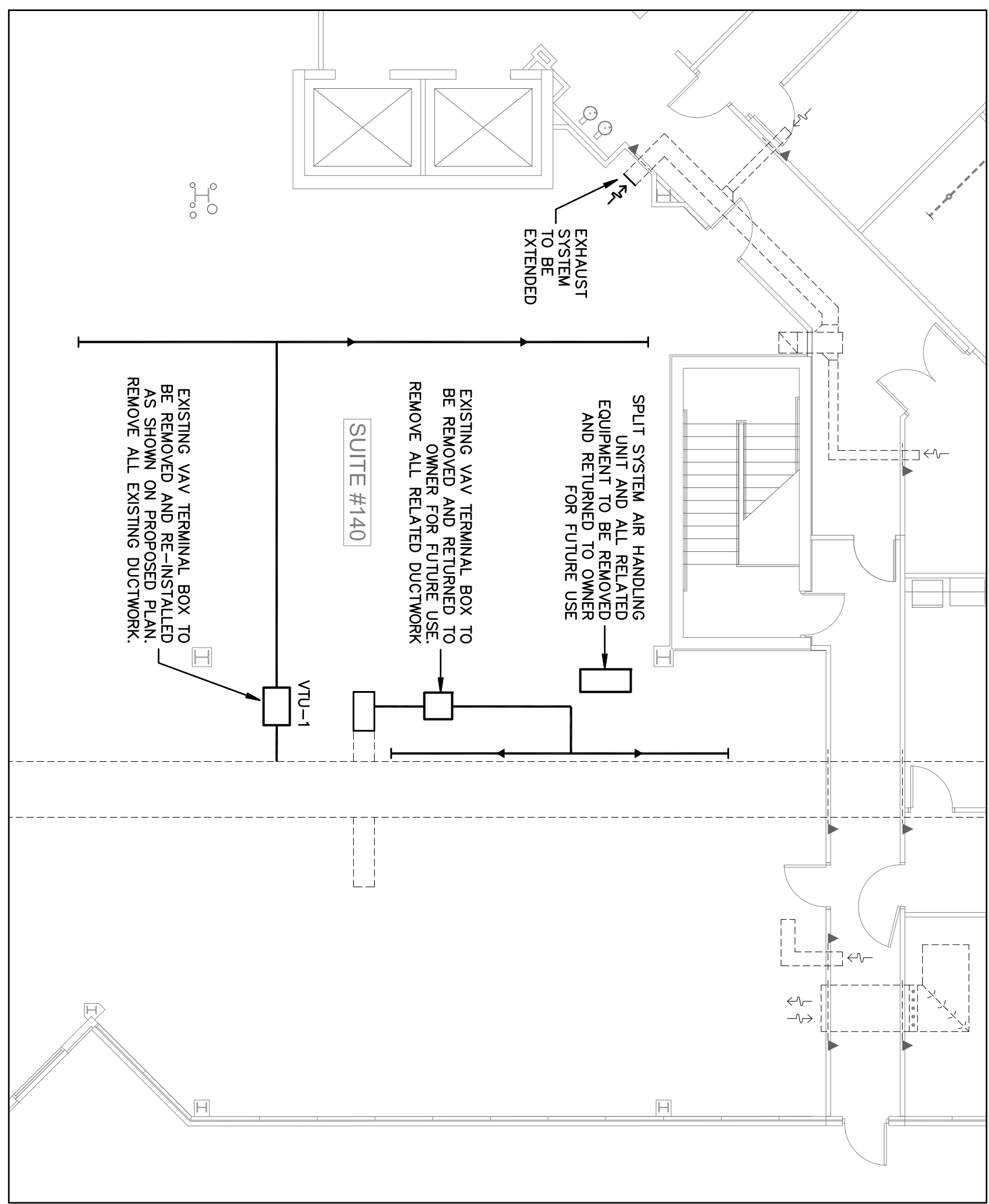


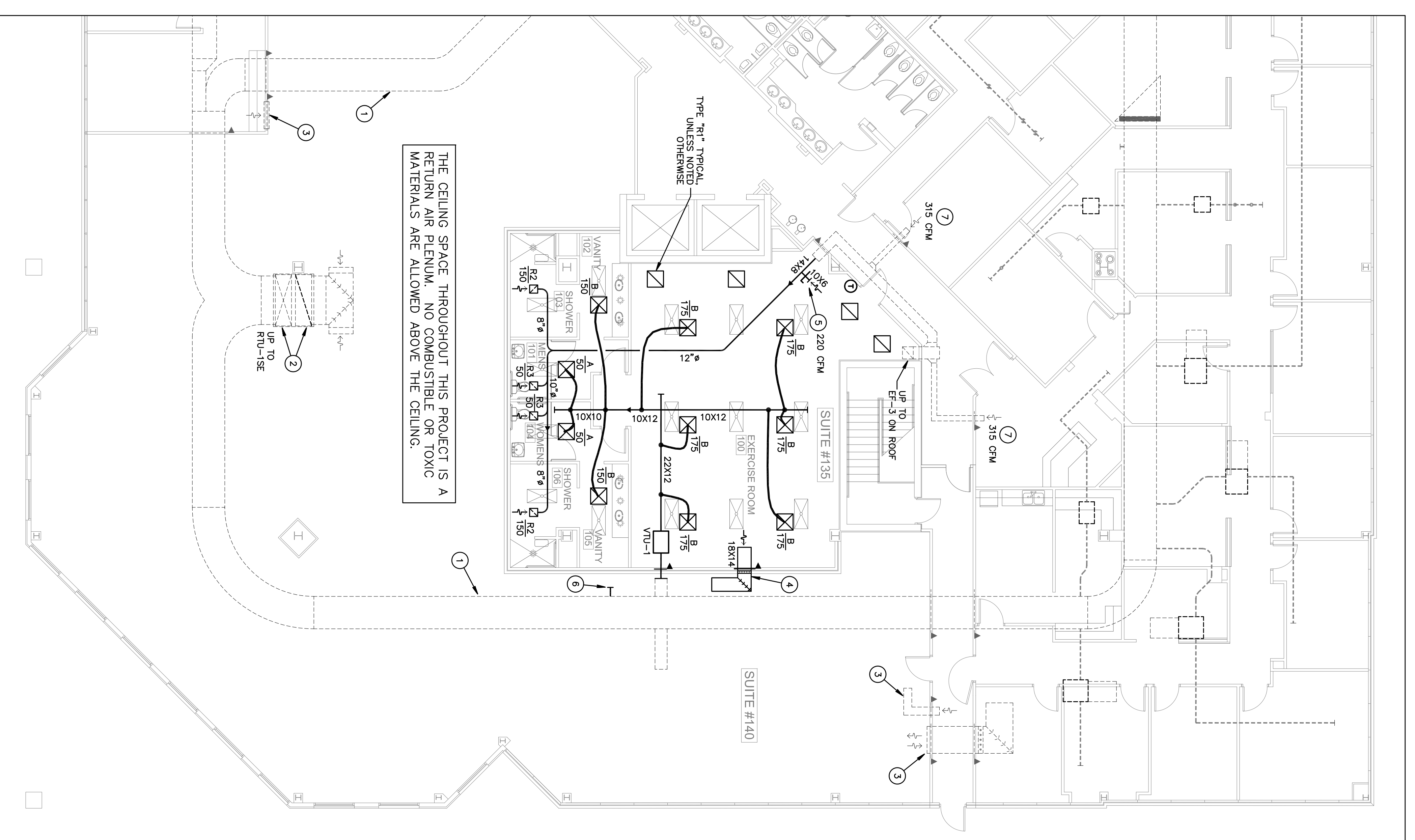
SYMBOL LEGEND	
	VAV TERMINAL UNIT AS NOTED
	EXISTING EQUIPMENT AS NOTED
	SUPPLY AIR DIFFUSER AS NOTED
	RETURN/TRANSFER GRILLE AS NOTED
	EXISTING RETURN/TRANSFER GRILLE
	EXISTING DUCTWORK AS NOTED
	DUCTWORK TO REMAIN
	DUCT TRANSITION
	OVERTIME A/C CARD READER
	TYPE B FIRE DAMPER W/ACCESS DOOR
	EXISTING FIRE DAMPER
	MANUAL VOLUME DAMPER
	THERMOSTAT AS NOTED
	FLEXIBLE DUCT, ULL. CLASS 1
	CONNECTION TO EXISTING EQUIPMENT
	TAKE-OFF WITH VOLUME DAMPER FOR FLEXIBLE DUCT



EXISTING HVAC FLOOR PLAN
SCALE: 1/8" = 1'-0"

ABBREVIATIONS	
VAV	VARIABLE AIR VOLUME
S/A	SUPPLY AIR
R/A	RETURN AIR
O/A	OUTSIDE AIR
E/A	EXHAUST AIR
CFM	CUBIC FEET PER MINUTE
MVD	MANUAL VOLUME DAMPER (OPPOSED BLADE TYPE)
FD	FIRE DAMPER
E	EXISTING
R	RE-LOCATE

- DRAWING KEYNOTES:**
- EXISTING MAIN SUPPLY AIR DUCT TO REMAIN AS IS (FROM ROOFTOP PACKAGED A/C UNITS)
 - EXISTING MAIN SUPPLY AND RETURN DUCTS UP TO ROOFTOP PACKAGED UNIT SHOWN FOR REFERENCE ONLY (NO WORK)
 - EXISTING R/A TRANSFER OPENING ABOVE CEILING, WITH FIRE DAMPER, TO REMAIN, SHOWN FOR REFERENCE ONLY.
 - PROVIDE R/A TRANSFER OPENING IN WALL ABOVE CEILING, WITH FIRE DAMPER, SECURITY BARS, AND DUCTBOARD SOUND ATTENUATION BOOT.
 - OPEN ENDED EXHAUST DUCT ABOVE CEILING.
 - CAP, SEAL AND INSULATE OPENING IN MAIN S/A DUCT AFTER REMOVAL OF VAV TERMINAL BOX.
 - RE-ADJUST EXISTING EXHAUST AIR QUANTITIES AS REQUIRED FOR NEW WORK, FIELD VERIFY.



PROPOSED HVAC FLOOR PLAN
SCALE: 1/8" = 1'-0"

Gilman & Associates, Inc.
MECHANICAL & ELECTRICAL ENGINEERS
507 NORTH LAKESIDE DRIVE
Lake Worth, FL 33460 C.A.#009078
(561) 582-0210 Fax (561) 582-8212
RONALD D. GILMAN P.E. #37933

BD

birse design inc.

5300 woodland lakes drive
palm beach gardens, FL 33418

phone 561-249-4001
fax 772-409-8684
AA26001615

EXERCISE ROOM

1475 CENTREPARK
1475 CENTREPARK DR #135
WEST PALM BEACH, FL

PROJECT NUMBER 147515

REVISIONS
1
2
3
4
5

DRAWN BY GD

CD

11/29/12

