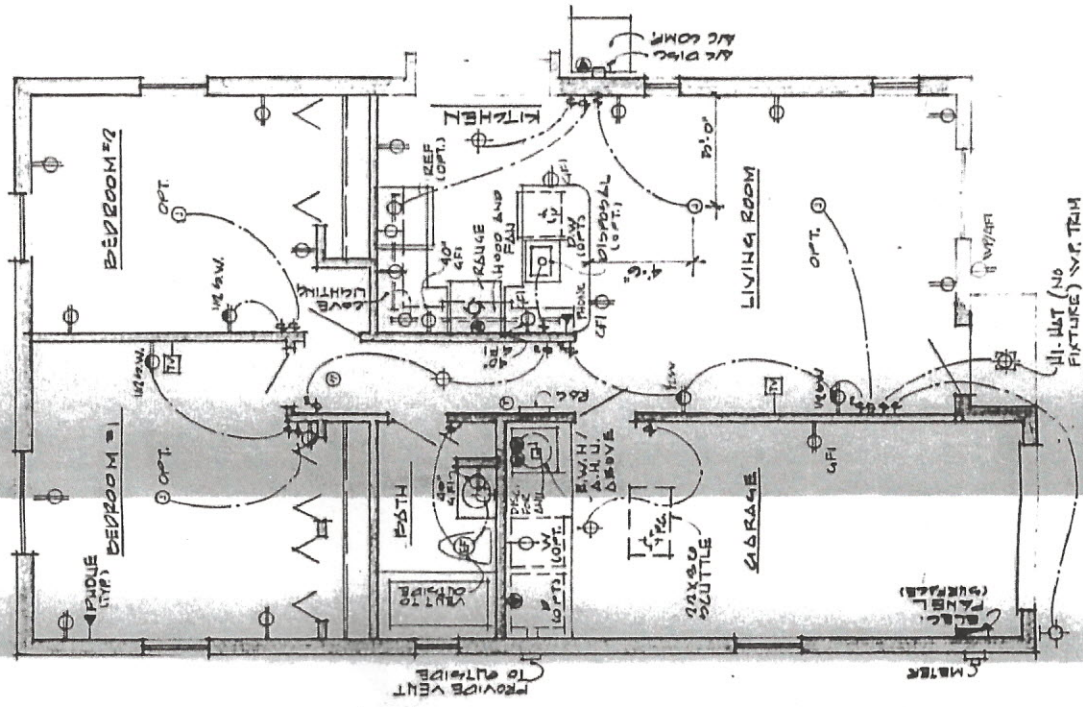


1/4" = 1'-0"

Note: 6'-0" x 4'-0" sliding glass doors may be substituted at window locations.



ELECTRICAL PLAN

1/4" = 1'-0"

- OPTIONAL:
1. Additional television or telephone outlets.
 2. Energy calculations do NOT include fans.
 3. Included with optional 6'-0" x 6'-0" sliding glass doors.