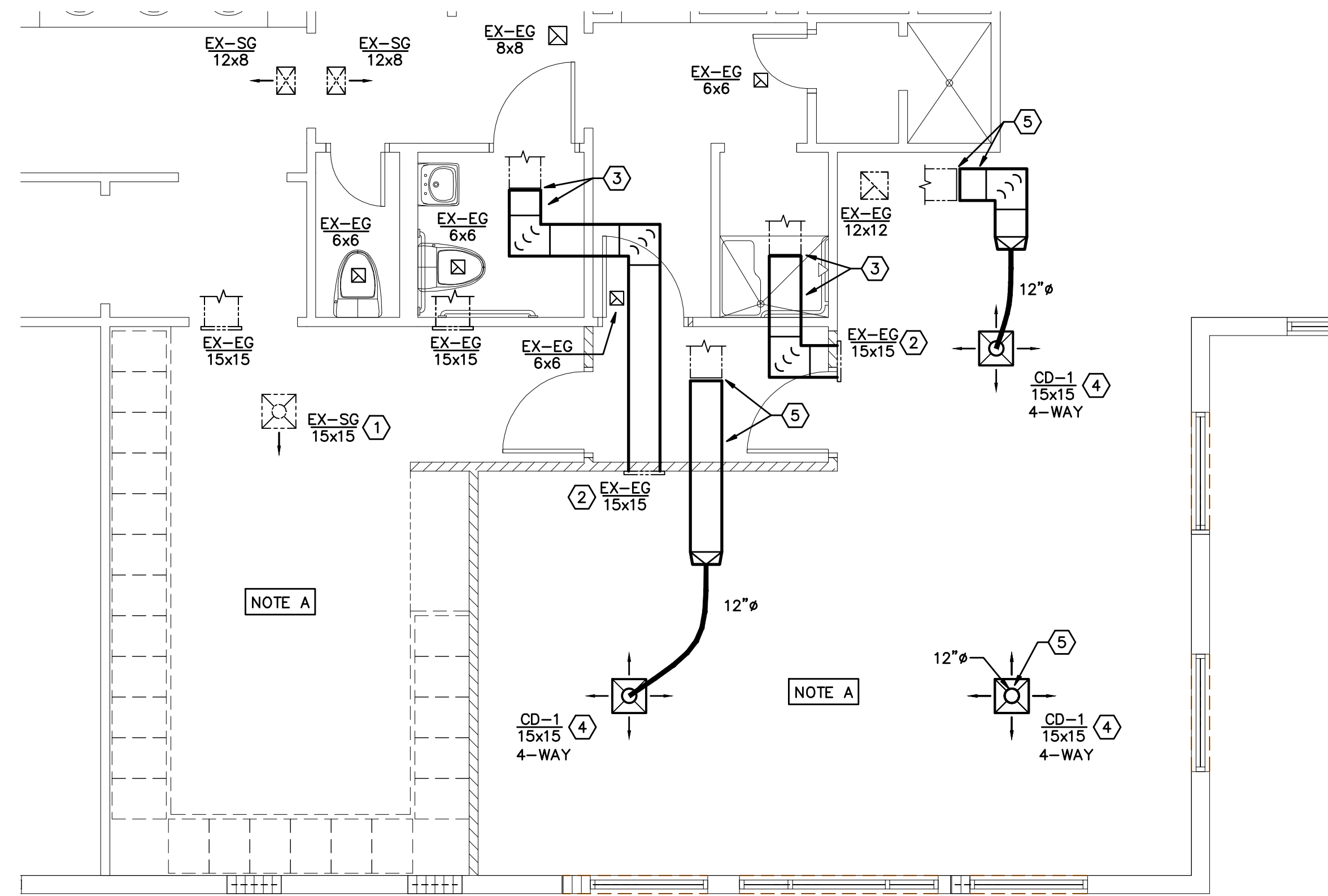


1 PARTIAL HVAC FLOOR PLAN - DEMOLITION
 SCALE: 1/4" = 1'-0"



2 PARTIAL HVAC FLOOR PLAN - NEW WORK
 SCALE: 1/4" = 1'-0"

FIELD COORDINATION NOTE

THE EXISTING GRILLE LOCATIONS AND SIZES WERE OBTAINED BY VISUAL INSPECTION AND ARE APPROXIMATE LOCATIONS.

THE EXISTING CEILINGS ARE DRYWALL TYPE CEILINGS AND INACCESSIBLE TO THE CEILING SPACE ABOVE, AND AS SUCH, THE EXISTING DUCTWORK ROUTING COULD NOT BE VERIFIED DURING DESIGN.

ONCE THE CEILINGS ARE REMOVED DURING CONSTRUCTION, THE CONTRACTOR SHALL VERIFY EXISTING DUCT ROUTING AND SIZES, AND OTHER POSSIBLE ABOVE CEILING OBSTRUCTIONS AND NOTIFY THE ARCHITECT AND ENGINEER FOR CONFLICT RESOLUTION.

- DEMOLITION NOTES**
- EXISTING CEILING SUPPLY GRILLE SHALL BE DISCONNECTED AND REINSTALLED IN NEW CEILING.
 - EXISTING SIDEWALL EXHAUST GRILLE SHALL BE DISCONNECTED AND REINSTALLED IN NEW LOCATION. REMOVE A PORTION OF THE DUCT ABOVE CEILING TO ALLOW EXTENSION OR OFFSET TO NEW LOCATION.
 - EXISTING CEILING SUPPLY GRILLE SHALL BE REMOVED.
 - EXISTING SIDEWALL SUPPLY GRILLE SHALL BE REMOVED.

SYSTEM BALANCING NOTE

NOTE A

THE CONTRACTOR SHALL HIRE A TEST AND BALANCE COMPANY TO PERFORM AIRFLOW MEASUREMENTS OF ALL GRILLES SERVING THESE SPACES THAT ARE BEING MODIFIED.

THE AIR QUANTITIES SHALL BE RECORDED AND THEN USED TO BALANCE THE NEW AND RELOCATED GRILLES IN THE MODIFIED SPACES.

INCLUDE IN THE BASE BID THE COST TO REMOVE AND REPLACE THE SHEAVES AND BELTS IN THE EXISTING AIR HANDLING UNIT SERVING THESE SPACES TO INCREASE THE FAN SPEED BY APPROXIMATELY 10 PERCENT IF REQUIRED TO ACHIEVE THE MEASURED CFM QUANTITIES.

- NEW WORK NOTES**
- REINSTALL EXISTING CEILING SUPPLY GRILLE IN NEW CEILING. PROVIDE DUCT EXTENSION OR OFFSET AS REQUIRED TO ALLOW GRILLE TO BE CENTERED IN THE SPACE.
 - REINSTALL EXISTING SIDEWALL GRILLE IN THE NEW WALL.
 - PROVIDE NEW DUCT EXTENSION SAME SAME AS EXISTING TO NEW LOCATION OF EXISTING SIDEWALL GRILLES.
 - PROVIDE NEW CEILING SUPPLY GRILLE IN NEW CEILING, TITUS MODEL TDC-AA, 15x15 NECK SIZE, 4-WAY THROW.
 - PROVIDE NEW DUCT EXTENSION, WHERE EXISTING SUPPLY GRILLE WAS REMOVED, TO NEW SUPPLY GRILLE.
 - PATCH AND SEAL REMAINING UN-USED WALL OPENINGS WHERE EXISTING GRILLES WERE REMOVED.

UNFORESEEN CONDITIONS NOTE

THE CONTRACTOR SHALL INCLUDE IN THE BASE BID ANY COSTS ASSOCIATED WITH ROUTING OR OFFSETTING DUCTWORK AROUND ANY ABOVE CEILING OBSTRUCTIONS.

INCLUDE IN THE BASE BID THE COST TO PROVIDE TEN (10) FEET OF RIGID DUCT AND INSULATION, AND TEN (10) FEET OF 12" DIAMETER FLEXIBLE DUCT FOR EACH NEW GRILLE AND FOR EACH RELOCATED GRILLE.

COPYRIGHT 2012
 THESE DRAWINGS ARE FOR THE EXCLUSIVE USE OF GLIDDEN, SPINA & PARTNERS, INC. AND MAY NOT BE REPRODUCED, COPIED, OR USED IN ANY MANNER WITHOUT THE EXPRESS WRITTEN CONSENT OF GLIDDEN SPINA & PARTNERS, INC. ALL RIGHTS RESERVED.

sheet title: PARTIAL HVAC FLOOR PLAN DEMOLITION AND NEW WORK
 file name: M-1.1 PARTIAL HVAC FLOOR PLAN
 project no: 09165D
 date: 01/27/12
 drawn by: WLM
 checked by: TWF
 revisions: