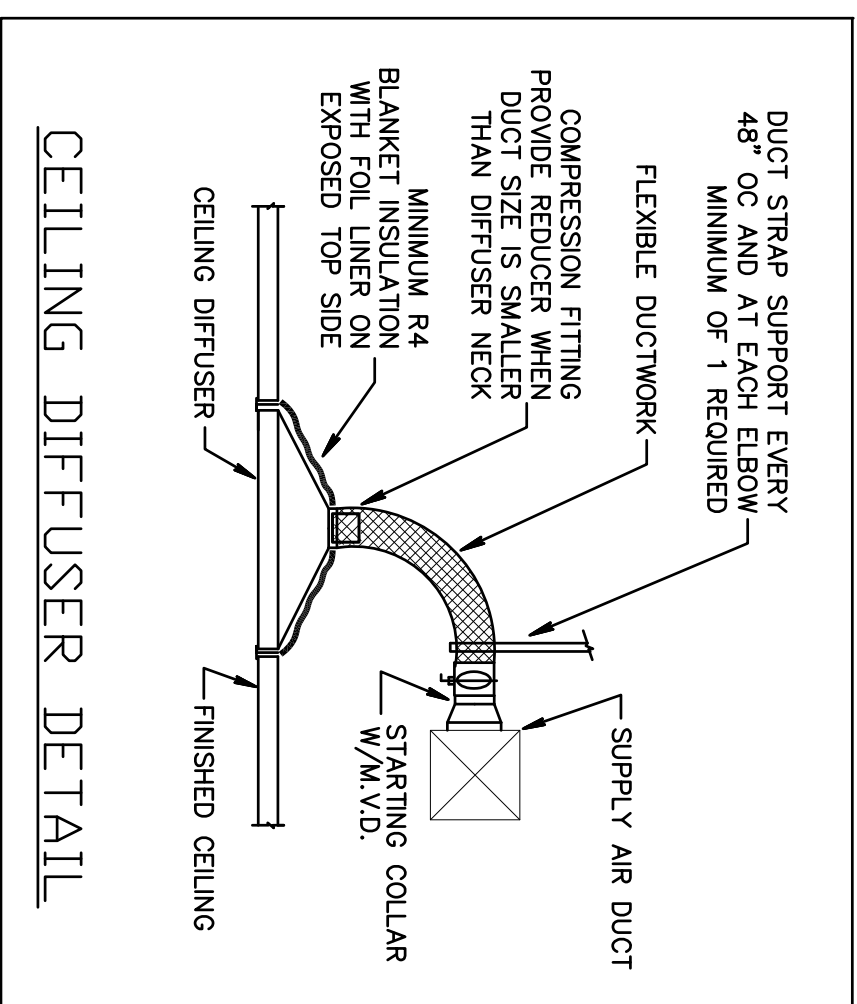


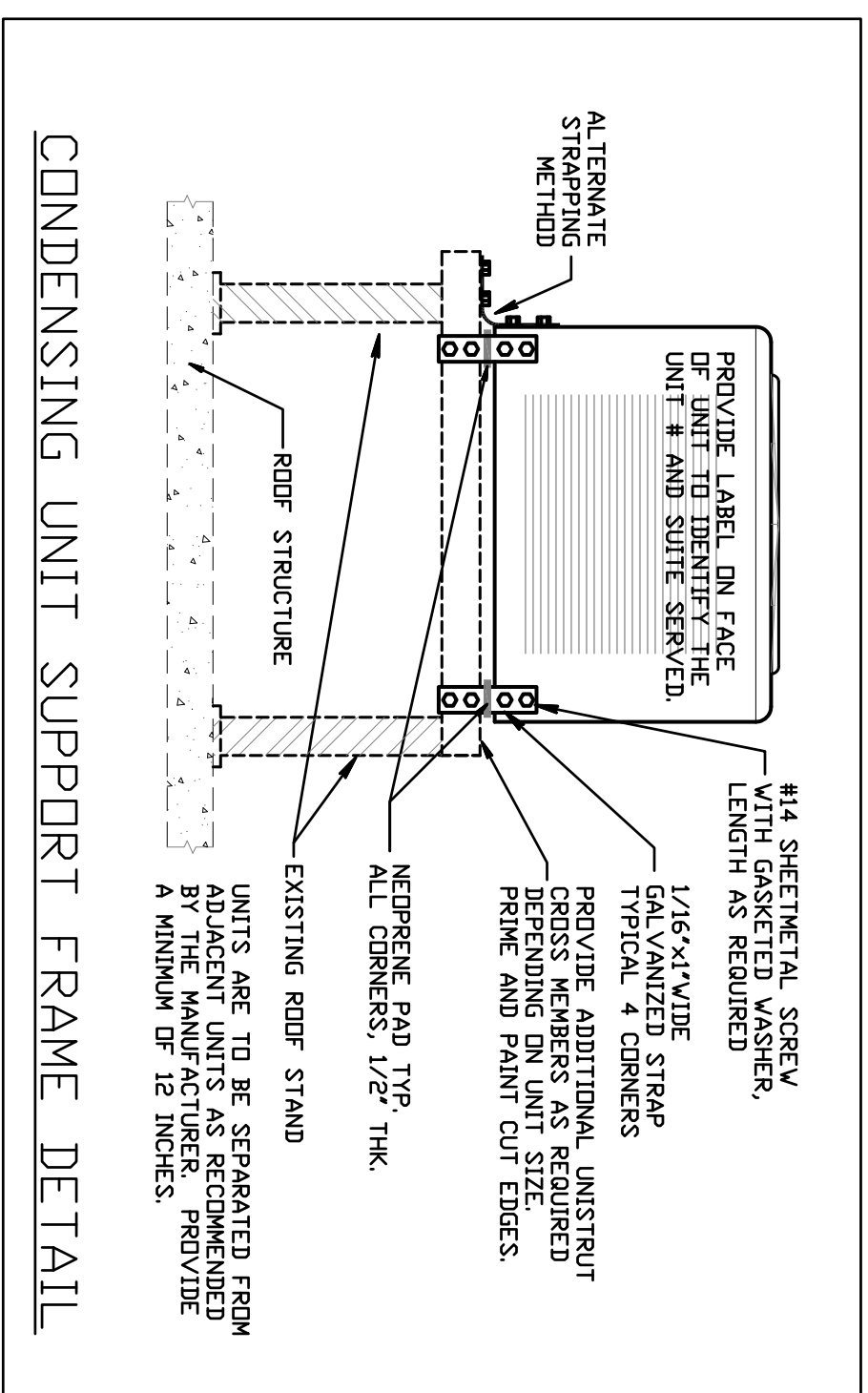
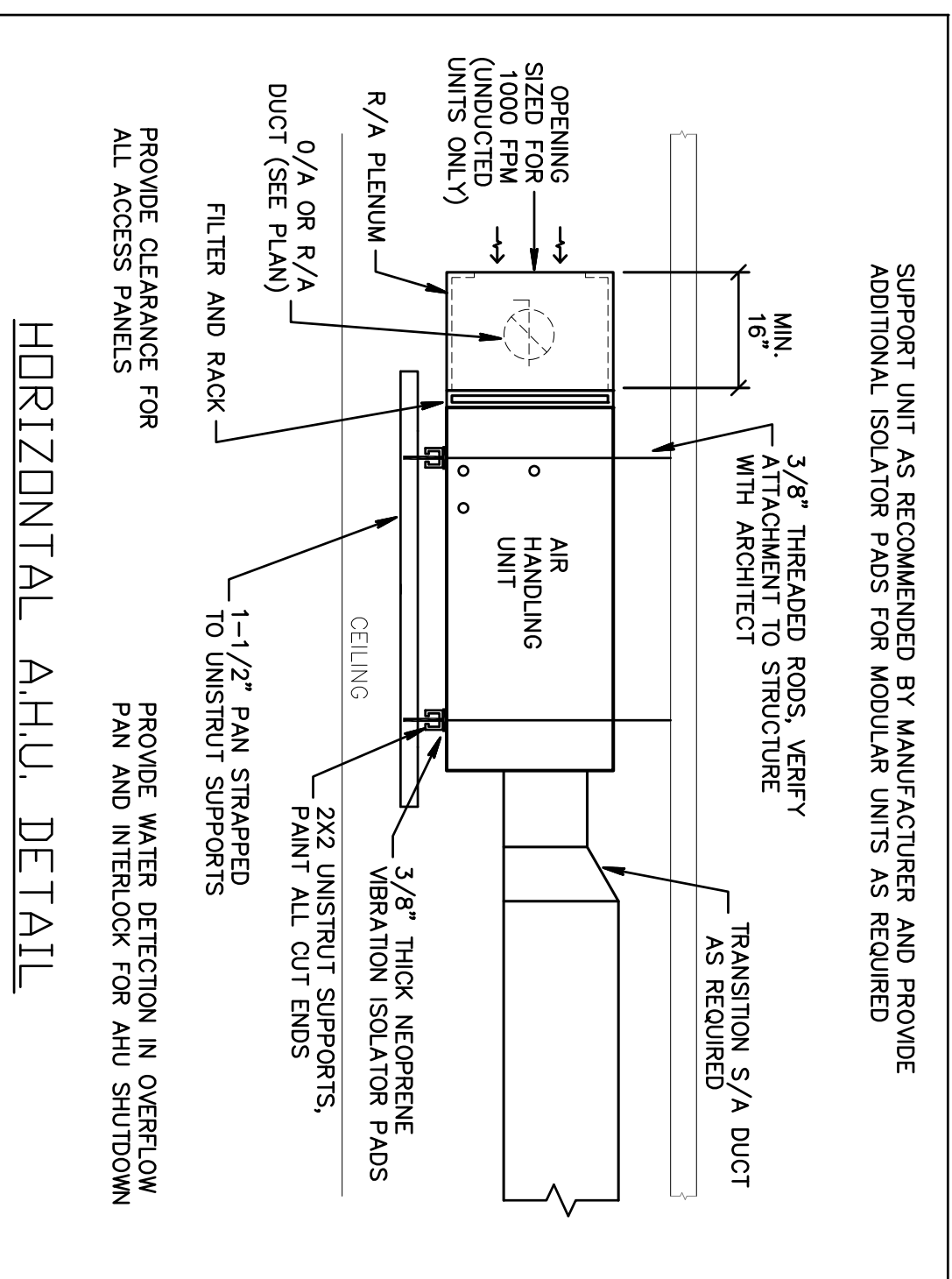
AIR DISTRIBUTION SCHEDULE									
MARK	MAKE	MODEL	SIZE	NECK	MATERIAL	BORDER TYPE	MOUNTING SURFACE	DAMPER	THROW
A1	TTUS	TDC-4A	9X9	6"ø	ALUMINUM	1	SURFACE	D-100	2 WAY
A	TTUS	TDC-4A	24X24	6"ø	ALUMINUM	3	LAY-IN	D-100	4 WAY
B	TTUS	TDC-4A	24X24	8"ø	ALUMINUM	3	LAY-IN	D-100	4 WAY
D	TTUS	27ZFL	8X6	-	ALUMINUM	1	SURFACE	D-100	4 WAY
R1	TTUS	3FL	24X24	22X22	ALUMINUM	3	LAY-IN	-	-
R2	TTUS	3FL	-	12X12	ALUMINUM	1	SURFACE	-	-

PROVIDE OFF-WHITE FINISH, AND SUBMITTAL TO ARCHITECT FOR APPROVAL.
 PROVIDE ROUND FLEXIBLE DUCT RUN-OUT SIZED TO MATCH S/A DIFFUSER NECK UNLESS NOTED OTHERWISE.
 PROVIDE PLUMB BOX ABOVE RETURN AIR GRILLES AS REQUIRED FOR DUCT CONNECTIONS. MINIMUM BOX HEIGHT IS 4".
 PROVIDE DAMPERS ONLY WHERE DUCT TAKE-OFF DAMPER IS NOT ACCESSIBLE.



GENERAL DEMOLITION NOTES

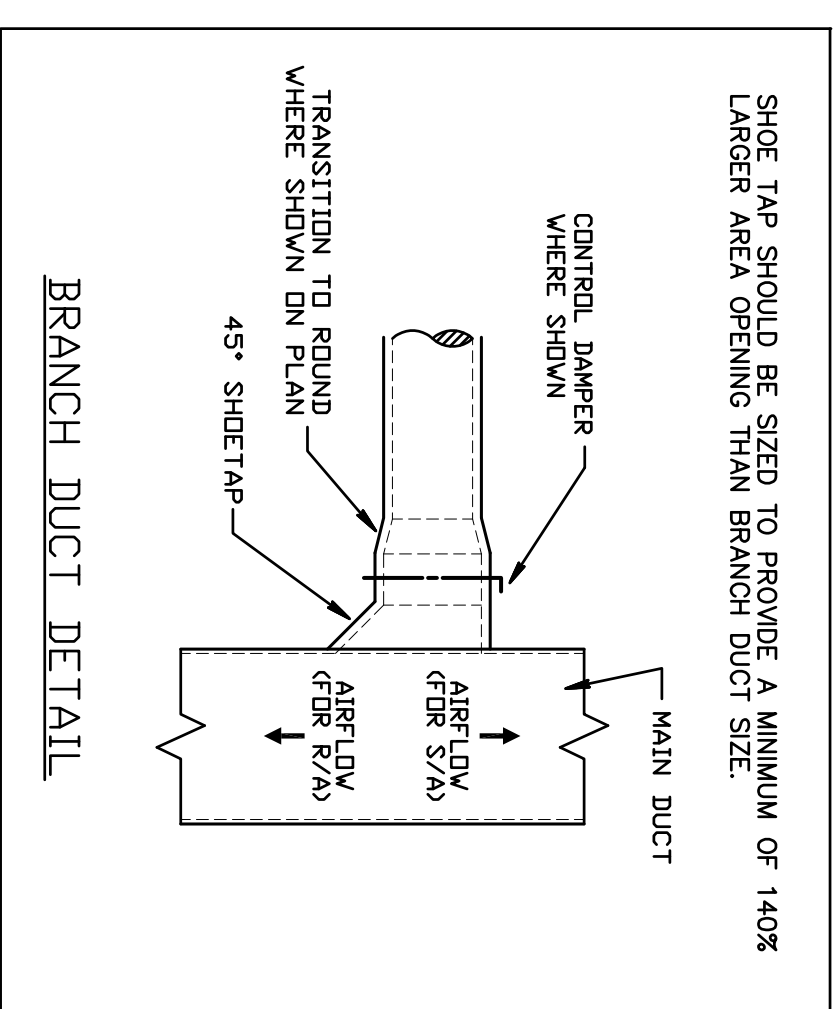
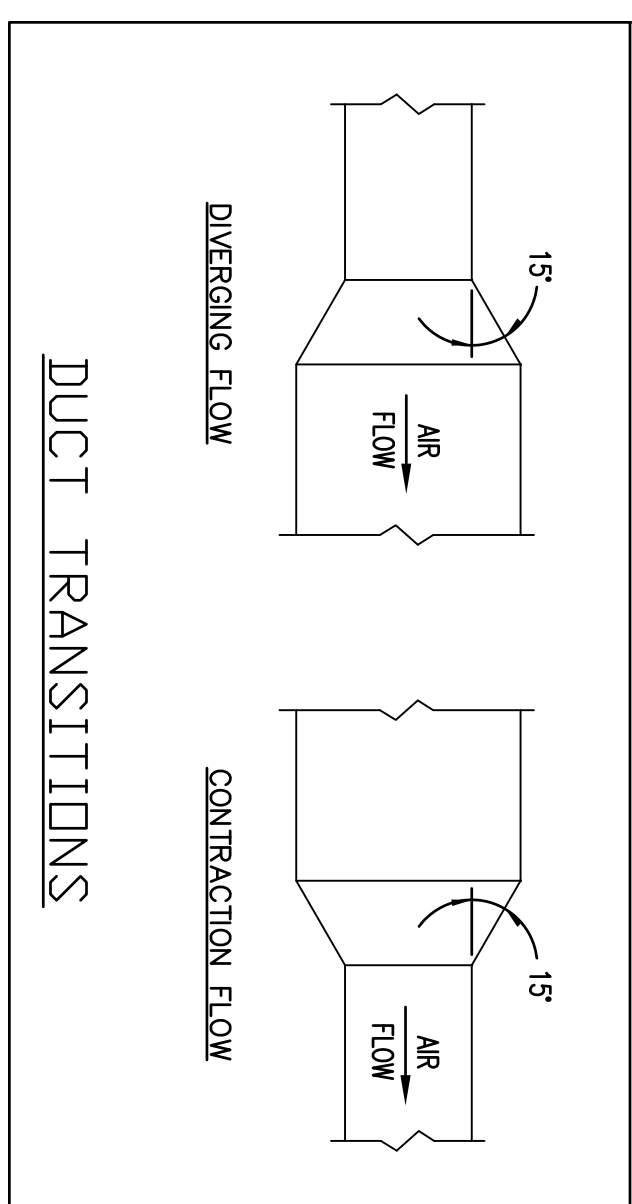
- UNLESS OTHERWISE NOTED, ALL EQUIPMENT AND DUCTWORK IN THE PROJECT AREA WHICH IS NOT INDICATED TO REMAIN, IS TO BE REMOVED. THE CONTRACTOR SHALL INVESTIGATE THE PROJECT AREA PRIOR TO BID TO DETERMINE ALL REQUIRED DEMOLITION.
- EXISTING CONDITIONS SHOWN ON THIS DRAWING ARE TAKEN FROM ORIGINAL DRAWINGS AND FIELD INVESTIGATION. ALL EXISTING CONDITIONS MUST BE VERIFIED PRIOR TO BID. FIELD CONDITIONS SHALL GOVERN.
- DEMOLITION WORK IS NOT SPECIFICALLY IDENTIFIED ON THESE PLANS, AND MAY BE DESCRIBED ON THE ARCHITECT'S PLANS. THE CONTRACTOR IS RESPONSIBLE FOR ALL REQUIRED DEMOLITION WHETHER SHOWN ON THE PLANS OR NOT.
- ALL MECHANICAL SYSTEMS SERVING OTHER SPACES OR FLOORS, THAT RUN THROUGH THE PROJECT AREA SHALL REMAIN ACTIVE DURING CONSTRUCTION, SO AS NOT TO CAUSE ANY DISRUPTION TO THESE OTHER SPACES.
- ALL ITEMS REMOVED UNDER THIS PROJECT SHALL BE DISPOSED OF OR TURNED OVER TO THE OWNER AT THE OWNER'S DISCRETION.
- PROPERLY REMOVE AND DISPOSE OF ALL HVAC DUCTWORK AND AIR DISTRIBUTION DEVICES WHICH ARE TO BE REMOVED. CONSULT WITH OWNER AND OBTAIN THE OWNER'S APPROVAL PRIOR TO DISPOSAL OF REMOVED MATERIAL.
- IT IS THE CONTRACTOR'S RESPONSIBILITY TO ENSURE THAT ALL PIPING AND DUCTS, NEW OR EXISTING, WITHIN THE PROJECT AREA, ARE PROPERLY SUPPORTED.
- ALL OCCUPIED SPACES ARE TO REMAIN OPERATIONAL DURING BUSINESS HOURS THROUGHOUT THE DEMOLITION AND CONSTRUCTION PERIOD. COORDINATE ALL WORK AS DESCRIBED IN THE ARCHITECT'S DOCUMENTS.



SPLIT A/C SYSTEM SCHEDULE			
AHU TAG	AHU-2	AHU-3	
MODEL #	F3ACN030	F3ACN036	
FAN MOTOR HP.	1/3	1/2	
FAN MOTOR FLA	2.8	4.1	
HEATER KW/STEPS	3.8 / 1	3.8 / 1	
SUPPLY AIR CFM @ EXT. SP.	800 @ 0.5	1200 @ 0.5	
OUTSIDE AIR CFM	87	90	
POWER - VOLTS/PHASE	208/1/60	208/1/60	
MCA / MSCP	28 / 30	28 / 30	
OPERATING WEIGHT (lbs)	122	144	
DIMENSIONS (LXWXH)	50X22X18	50X22X18	
CU TAG	CU-2	CU-3	
MODEL #	24AB324C	24AB336C	
NOMINAL TONS (TOTAL)	2.0	3.0	
COMPRESSOR R.L.A	13.5	16.7	
FAN MOTOR FLA	0.8	1.1	
POWER - VOLTS/PHASE	208/1/60	208/1/60	
MCA / MSCP	17.6 / 30	21.9 / 35	
OPERATING WEIGHT (lbs)	133	167	
DIMENSIONS (LXWXH)	66X26X35	31X31X39	
MANUFACTURER	CARRIER	CARRIER	
TOTAL SENSIBLE MBH	222	256	
TOTAL COOLING MBH	150	34.4	
RATING DB / V.B. °F	80/67	75/63	
SEER (EER)	13.0	13.0	

SYSTEM	CONDENSING UNIT	AIR HANDLING UNIT
MODEL #	24AB324C	24AB336C
NOMINAL TONS (TOTAL)	2.0	3.0
COMPRESSOR R.L.A	13.5	16.7
FAN MOTOR FLA	0.8	1.1
POWER - VOLTS/PHASE	208/1/60	208/1/60
MCA / MSCP	17.6 / 30	21.9 / 35
OPERATING WEIGHT (lbs)	133	167
DIMENSIONS (LXWXH)	66X26X35	31X31X39
MANUFACTURER	CARRIER	CARRIER
TOTAL SENSIBLE MBH	222	256
TOTAL COOLING MBH	150	34.4
RATING DB / V.B. °F	80/67	75/63
SEER (EER)	13.0	13.0

- NOTES:**
- PROVIDE 5 MINUTE ANTI-SHORT CYCLE RELAY.
 - PROVIDE A/C UNIT MANUFACTURER'S PROGRAMMABLE THERMOSTAT.
 - SIZE AND RUN REFRIGERANT PIPING PER MANUFACTURER'S PUBLISHED RECOMMENDATIONS.
 - PROVIDE VIBRATION ISOLATORS PER MANUFACTURER'S RECOMMENDATIONS.
 - INSULATE REFRIGERANT SOLUTION LINE WITH FINE RETICULATED FIBERGLASS INSULATION. INSULATE REFRIGERANT LIQUID LINE WITH LIQUID TIGHT GLASS AND EXPANSION VALVES.
 - PROVIDE LIQUID TIGHT GLASS AND EXPANSION VALVES.
 - PROVIDE MANUFACTURER'S STANDARD FILTER RACK UPSTREAM OF AHU RETURN AIR OPENING.
 - HEATER CAPACITIES SHOWN AT 208 VOLT OPERATING VOLTAGE.
 - HEATER CAPACITIES SHOWN AT 208 VOLT OPERATING VOLTAGE.



Gilman & Associates, Inc.
 MECHANICAL & ELECTRICAL ENGINEERS
 587 NORTH LAKESIDE DRIVE
 Lake Worth, FL 33460 C.A. #009078
 (561) 582-0210 Fax (561) 582-8212
 RONALD D. GILMAN P.E. #37933

BD

birse design inc.

5300 woodland lakes drive
 palm beach gardens, fl 33418

phone 561-249-4001
 fax 772-400-8684
 AA26001615

CRUDEN BAY

GRAND BANK CENTER
 3601 PGA BLVD #220
 PALM BEACH GARDENS, FL

PROJECT NUMBER GBC06

REVISIONS

- _____
- _____
- _____
- _____
- _____

DRAWN BY GDR

CD

10/31/12

M-2

SCALE: NONE

HVAC DETAILS