

DOOR & FRAME NOTES

INTERIOR DOORS

1) ALL INTERIOR DOORS SHALL BE FLUSH FACE WDMA PREMIUM GRADE, SOLID CORE, FLAME SLICED WITH BOOK MATCHED GRAIN 5-PLY BIRCH VENEER WOOD DOORS FACTORY PRE-FINISHED WITH CLEAR POLY UNLESS OTHERWISE NOTED.

2) HW FRAMES SHALL BE 16 GAUGE SHOP PRIMED STEEL DOOR FRAMES, REINFORCED AS REQ'D TO RECEIVE HARDWARE. FRAMES SHALL BE HOT DIP GALVANIZED @ ALL EXTERIOR LOCATIONS.

EXTERIOR DOORS

1) STEEL DOORS TO COMPLY W/ STEEL DOOR INSTITUTE SDI-100, GRADE III, EXTRA HEAVY DUTY, INSULATED (MIN 1" URETHANE INSULATION), INSTALL IN COMPLIANCE W/ SDI-105, (PROVIDE KNOCKDOWN FRAMES @ INTERIOR LOCATIONS)

2) SEE A3.1 & A3.2 FOR COLORS OF EXTERIOR ITEMS SCHEDULED TO BE PAINTED.

STOREFRONT/CURTAINWALL

- ALUM CURTAINWALL SYSTEM SHALL BE 1600 SYSTEM I (25" X 15") W/ 1" PERIMETER AS MANUFACTURED BY KAMNEER, W/ A STOCK WHITE FLUOROPOLYMER FINISH. ALL ALUM FRAMING MEMBERS SHALL BE THERMAL BREAK TYPE.
- ALUM STOREFRONT SYSTEM SHALL BE TRIFAB 451T AS MANUFACTURED BY KAMNEER, W/ A STOCK WHITE FLUOROPOLYMER FINISH. ALL ALUM FRAMING MEMBERS SHALL BE THERMAL BREAK TYPE.
- ALL EXTERIOR SEALANT UTILIZED FOR THE INSTALLATION OF ALUMINUM STOREFRONT SYSTEM SHALL BE "TREMCO" DYMONIC OR EQUAL, COLOR: WHITE

GLAZING SPEC

- 1" THICK SEALED INSULATING LOW-E GLASS
- SOLAR BAN 60 (2) "CLEAR" AS MANUFACTURED BY FPG INDUSTRIES
- U-VALUE=21
- SHGC=39
- SHADING COEFFICIENT= .44 (OR APPROVED EQUAL)
- TEMPERED GLASS REQUIRED AT ALL LOCATIONS WHERE INDICATED BY "T"

ELIASON SCP-6 DOOR SPEC

- DOOR BODY: 0.75" EXTERIOR GRADE SOLID WOOD CORE, 1" TOTAL DOOR THICKNESS
- FINISH LAMINATE: 0.02" MILSONART FUSION MARBLE (1404) BOTH SIDES
- BASE PLATE: 24" HIGH, 16 GAUGE STAINLESS STEEL (BOTH SIDES)
- EDGE TRIM: 20 GAUGE STAINLESS STEEL
- BLACK CHANNEL: 20 GAUGE STAINLESS STEEL
- HARDWARE: BY ELIASON - TO INCLUDE FULL HANDLE ON UTILITY RM SIDE & RUBBER BUMPER STOP FOR SINGLE SKINS INTO UTILITY RM.

HARDWARE SETS

E-1 (BY ALUM MANUFACTURER)

3 PAIR BUTTS
2 CLOSERS
2 FULL BARS
2 PUSH BARS
1 SET WEATHER STRIPS
1 CYLINDER
1 THRESHOLD
2 STORM CHAINS
2 BOTTOM SWEEPS
1 FLUSH BOLT

STANLEY #FBB168 (32D) 4-1/2" x 4-1/2" NRP
LCN 410N X ADA
KAMNEER #C04
KAMNEER #C04
BY MANUFACTURER
KAMNEER 5 PIN X THUMB TURN
FEMKO 164A x 12"
HAGER #300D
FEMKO 321CN
KAMNEER

E-2 (BY ALUM MANUFACTURER)

1 1/2 PAIR BUTTS
1 CLOSER
1 FULL BAR
1 PUSH BARS
1 SET WEATHER STRIPS
1 CYLINDER
1 THRESHOLD
1 STORM CHAINS
1 BOTTOM SWEEPS

STANLEY #FBB168 (32D) 4-1/2" x 4-1/2" NRP
LCN 410N X ADA
KAMNEER #C04
KAMNEER #C04
BY MANUFACTURER
KAMNEER 5 PIN X THUMB TURN
FEMKO 164A x 12"
HAGER #300D
FEMKO 321CN
KAMNEER

E-3

2 PAIR BUTTS
1 RIM EXIT DEVICE
1 OFFICE SET
1 THRESHOLD
1 SET WEATHERSTRIP
1 BOTTOM SWEEP
1 STORM CHAIN
1 WALL STOP HOLDER
1 DOOR FULL @ INTERIOR

STANLEY #FBB168 -
4 1/2 x 4 1/2 x P (600 STEEL) NRP
DETTEX # ECL-230D
SARGENT #231 EN
FEMKO 164A x 48"
NSP #108KDB
NSP #200NDB
IVES #15 x B26D
IVES #449 X B26D
ROCKWOOD #150 x 26D

O-1

1 1/2 PAIR BUTTS
1 CLOSER
1 SET SILENCERS
1 KICK PLATE
1 DOOR STOP

STANLEY #F191 4-1/2 x 4-1/2 x U526D
LCN 410N X ADA
SCHLAGE CO-100-CY-TO-KP-626-PD
ROCKWOOD #608
ROCKWOOD #K1050 24" x 34" x U526D
ROCKWOOD #441CU x U526D (FLOOR STOP)

P-1

1 1/2 PAIR BUTTS
1 CLOSER
1 ELECTRONIC LOCK
2 KICK PLATES
(1 EACH SIDE)

STANLEY #F191 4-1/2 x 4-1/2 x U526D
LCN 410N X ADA
SCHLAGE CO-100-CY-TO-KP-626-PD
ROCKWOOD #K1050 24" x 34" x U526D

P-2

1 1/2 PAIR BUTTS
1 CLOSER
1 PUSH PLATE
1 FULL
1 SET SILENCERS
2 KICK PLATE
(1 EACH SIDE)
1 RESTROOM SIGN
1 DOOR STOP

STANLEY #F191 4-1/2 x 4-1/2 x U526D
LCN 410N X ADA
ROCKWOOD #608
ROCKWOOD #K1050 24" x 34" x U526D
SARGENT #65615 KL X 26D
ROCKWOOD #441CU x U526D (FLOOR STOP)

P-3

1 1/2 PAIR BUTTS
1 CLOSERS
1 SET SILENCERS
1 KICK PLATE
1 PASSAGE SET
1 DOOR STOP

STANLEY #F191 4-1/2 x 4-1/2 x U526D
LCN 410N X ADA
ROCKWOOD #608
ROCKWOOD #K1050 24" x 34" x U526D
SARGENT #65615 KL X 26D
ROCKWOOD #441CU x U526D (FLOOR STOP)

FINISH SCHEDULE

ROOM	FLOOR		BASE	NORTH WALL		EAST WALL		SOUTH WALL		WEST WALL		CEILING			REMARKS
NAME	MAT	FIN	MAT	MAT	FIN	MAT	FIN	MAT	FIN	MAT	FIN	MAT	FIN	HEIGHT	
RETAIL	CONC	VCT-1	RES-1	GB	GB/SL	GB	PT-1/PT-2 PT-6	GB	PT-1/PT-2 PT-6	PT-1/PT-2 WP-2	GB	2x2 ACT	ACT-1	10'-6"	WFOOD WALL FINISH @ GFI PANELS TO BE PAINTED BLACK
RECEIVING/UTILITY	CONC	VCT-1	RES-1	GB/FRZR PT-1	PT-1/FRZR	GB/COOLER	PT-1/COOLER	GB/WVD	PT-1/PT-4 PT-6	GB	PT-1	2x2 ACT	ACT-2	9'-0"	
WOMEN	CONC	VCT-1	RES-1	GB	WP-3/WP-4	GB	WP-3/WP-4	GB	WP-3/WP-4	GB	WP-3/WP-4	GYP	PT-3	8'-0"	
MEN	CONC	VCT-1	RES-1	GB	WP-3/WP-4	GB	WP-3/WP-4	GB	WP-3/WP-4	GB	WP-3/WP-4	GYP	PT-3	8'-0"	
ALCOVE	CONC	VCT-1	RES-1	GB	PT-1	GB	PT-1	GB	PT-1	GB	PT-1	2x2 ACT	ACT-1	9'-0"	
CORRIDOR	CONC	VCT-1	RES-1	GB	PT-1	-	-	GB	PT-1	GB	PT-1	2x2 ACT	ACT-1	9'-0"	
MGR OFFICE	CONC	VCT-1	RES-1	GB	PT-1	GB	PT-1	GB	PT-1	GB	PT-1	2x4 ACT	ACT-2	9'-0"	
CASHIER AREA	CONC	VCT-1	RES-1	GB	PT-1/PT-2/ WP-2	GB	PT-1/PT-2/ WP-2	-	-	-	-	GYP	PT-1/ PT-3	8'-0"/ 9'-0"	
WALK-IN COOLER	CONC	SC-1	NONE	-	-	-	-	-	-	-	-	-	-	-	PREFAB UNIT
WALK-IN FREEZER	CONC	SC-1	NONE	-	-	-	-	-	-	-	-	-	-	-	PREFAB UNIT
WALK-IN STOR FRZ	CONC	SC-1	NONE	-	-	-	-	-	-	-	-	-	-	-	PREFAB UNIT
CLOSET 1	CONC	VCT-1	RES-1	GB	PT-1	GB	PT-1	GB	PT-1	GB	PT-1	2x2 ACT	ACT-1	9'-0"	
CLOSET 2	CONC	VCT-1	RES-1	GB	PT-1	GB	PT-1	GB	PT-1	GB	PT-1	2x2 ACT	ACT-1	9'-0"	
BEER CAVE	CONC	SC-2	NONE	-	WP-5	-	WP-5	-	WP-5	-	WP-5	-	-	-	

FINISH NOTES

- SEE A6.1 FOR INTERIOR ELEVATIONS
 - PROVIDE TAPE & 3 COATS JOINT COMPOUND AT WALLS SCHEDULED TO RECEIVE PAINT FINISH
 - PROVIDE 1 PRIME COAT & 2 FINISH COATS @ ALL AREAS SCHEDULED TO RECEIVE PAINT FINISH. ALL WALLS BEHIND MILLWORK CABINETS TO BE PAINTED
 - ALL FINISHES TO CONTINUE TO FLOOR BEHIND AND ALONG SIDE WALLS OF DELFIELD & CHILLZONE EQUIPMENT
 - SEE A1.3 FOR SOFFIT FINISH COLORS
 - GYPSUM BOARD SPECIFICATION:
MANUFACTURER:
-US GYPSUM COMPANY
-GOLD BOND BUILDING PRODUCTS
-GEORGIA PACIFIC CORPORATION
MATERIALS:
-MAXIMUM PERMISSIBLE LENGTH;
SQUARE CUT ENDS, TAPERED EDGES;
THICKNESS AS SHOWN ON DRAWINGS
-STANDARD TYPE, ANSI/ASTM C86
-MOISTURE RESISTANT TYPE;
ANSI/ASTM C71;
WATER REPELLANT PAPER FACES
- 7) ALL INTERIOR PAINT IS TO BE 'REGAL' BY BENJAMIN MOORE. ALL WALLS, DOOR FRAMES & VERTICAL FACES OF SOFFITS SHALL BE PAINTED WITH AN EGG SHELL FINISH. ALL GYP BD CEILINGS & UNDERSIDE OF SOFFITS SHALL BE PAINTED WITH A FLAT FINISH.

WALL FINISH SPECIFICATIONS

CODE	MATERIAL	MANUFACTURER	PRODUCT NO	DESCRIPTION / REMARKS
FL-1	PLASTIC LAMINATE			AS SELECTED BY OWNER
PT-1	PAINT	BENJAMIN MOORE	2146-40 "PALE AVOCADO"	USE @ WALLS & SOFFITS
PT-2	PAINT	BENJAMIN MOORE	0C89 "TIMID WHITE"	USE @ SOFFITS
PT-3	PAINT	BENJAMIN MOORE	2146-50 "RAIN FOREST DEW"	USE @ SOFFITS
PT-4	PAINT (EXTERIOR)	SHERWIN WILLIAMS	METALASTIC DTM SEMI-GLOSS (FOR MTL SURFACES)	SW # 1035 AESTHETIC WHITE
PT-5	PAINT (EXTERIOR)	SHERWIN WILLIAMS	A82 SERIES/ALCO SATIN FINISH (PLASTIC, CMU & WD SURFACES)	SW # 1035 AESTHETIC WHITE
PT-6	PAINT	RUST-OLEUM	"SPECIALTY MAGNETIC PRIMER"	MAGNETIC PRIMER FOR USE ABOVE ALL W-IN COOLER/FREEZER DOORS PRIOR TO APPLICATION OF FINISH PAINT
PT-7	NOT USED			
SS-1	SOLID SURFACE	FORMICA	656 "RIVER ROCK MOSAIC"	
WP-1	FRP PANELS	MARLITE	#P-100 - WHITE (PEBBLE SURFACE)	
WP-2	WALL PANELS	MARLITE	STACKBOND; CUSTOM COLOR "KEY LIME"	USE AT DELFIELD AREAS COFFEE COUNTER INSTALL TILE PATTERN HORIZONTALLY
WP-3	WALL PANELS	MARLITE	PLANK - WEAVE SERIES; COLOR #209 ADARA	USE IN RESTROOMS (UPPER HALF)
WP-4	WALL PANELS	MARLITE	PLANK - STONE SERIES; COLOR #936 MILAN	USE IN RESTROOMS (LOWER HALF)
WP-5	WALL PANELS	MARLITE	VOLTA-FLEX	COLOR: CROSS HATCH SILVER PATTERN; AS SELECTED BY OWNER
CS-1	16 GA STAINLESS STEEL CORNER GUARD		1" X 1" S.S. CORNER GUARD, #4 SATIN FINISH W/ COUNTERSUNK S.S. SCREWS	FULL HEIGHT OF WALL FROM BASE TO CEILING
CS-2	16 GA STAINLESS STEEL END WALL CAP		S.S. END WALL CAP W/ 1" MINSS EA. SIDE X WIDTH OF WALL, #4 SATIN FINISH W/ COUNTERSUNK S.S. SCREWS	FULL HEIGHT OF WALL FROM BASE TO CEILING

FLOOR FINISH SPECIFICATIONS

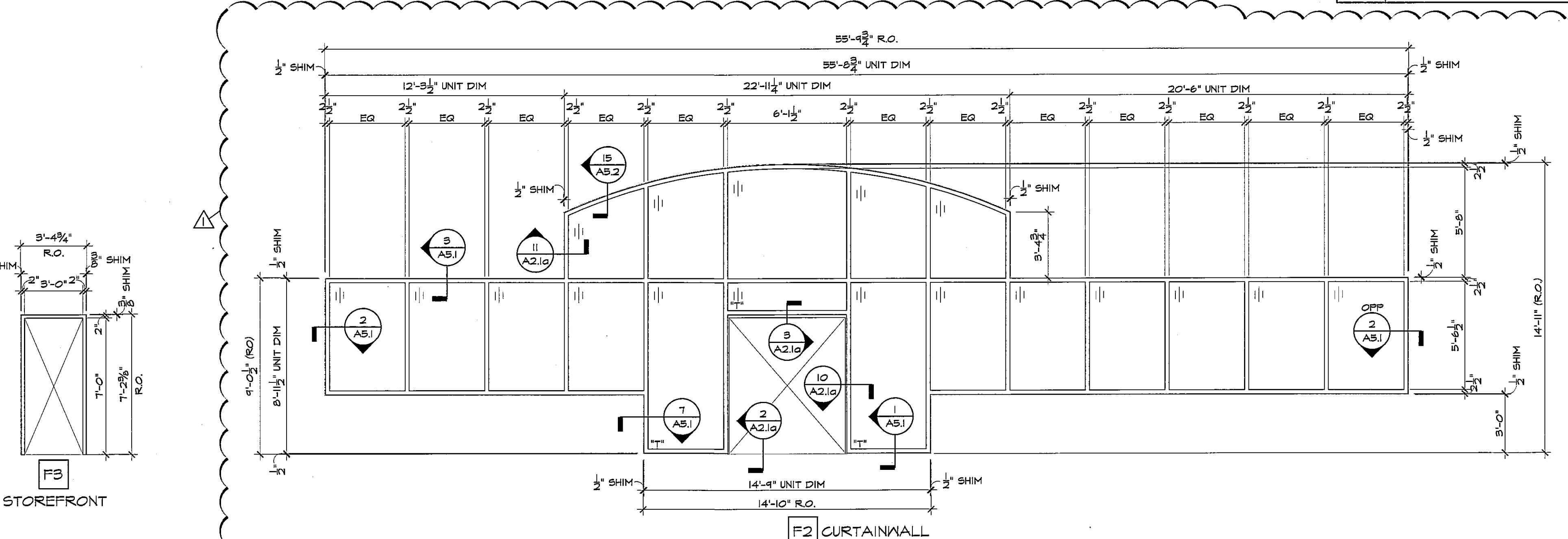
CODE	MATERIAL	MANUFACTURER	PRODUCT NO	DESCRIPTION / REMARKS
RES-1	4" VINYL COVE BASE	ARMSTRONGS	#64 FRESH TAUPÉ	
VCT-1	VINYL PLANK	ALTRO	ADORE TOUCH # AT-1516 (VILLA OAK)	
VCT-2	VINYL COMPOSITION TILE	**TBD**	YELLOW - INSTALL OVER PLANK FLOOR (VCT-1)	AS SELECTED BY OWNER APPLY OVER VCT-1
SC-1	SEALED CONCRETE	SHERWIN WILLIAMS	"ARMORSEAL 1000HS"	COLOR: AS SELECTED BY OWNER
SC-2	SEALED CONCRETE	SHERWIN WILLIAMS	DURA-PLATE 285 MULTI-PURPOSE EPOXY	COLOR: AS SELECTED BY OWNER
TS-1	TRANSITION STRIP	JOHNSONITE	REDUCER RRS-XX-C (1/8" TRANSITION)	CUT TO LENGTH OF OPENING COLOR AS SELECTED BY OWNER
TS-2	TRANSITION STRIP	JOHNSONITE	REDUCER CRS-XX-A (1/4" TRANSITION)	CUT TO LENGTH OF OPENING COLOR AS SELECTED BY OWNER

CEILING FINISH SPECIFICATIONS

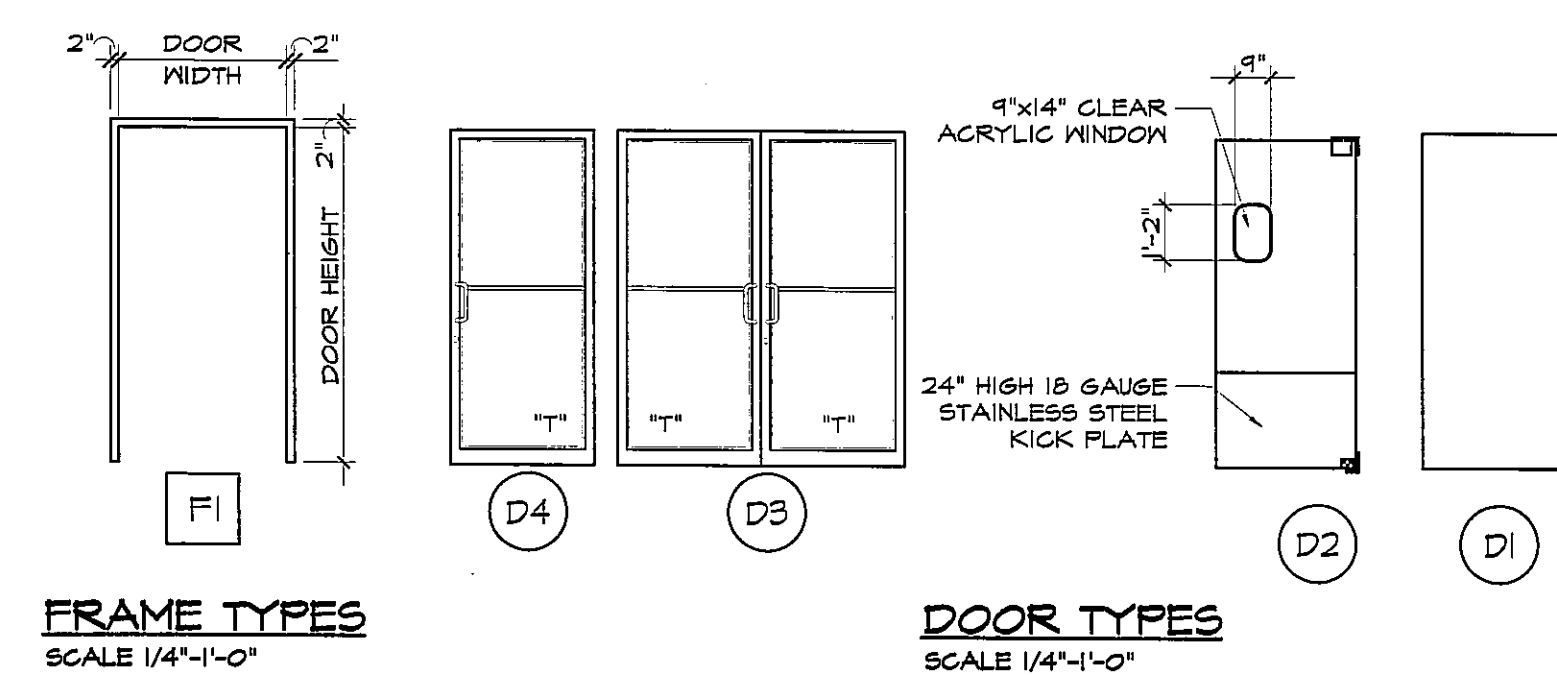
CODE	MATERIAL	MANUFACTURER	PRODUCT NO	DESCRIPTION / REMARKS
ACT-1	LAY-IN ACOUSTICAL CLS TILES	ARMSTRONGS	ULTIMA #1410 - WHITE	24"x24"
ACT-2	LAY-IN ACOUSTICAL CLS TILES	ARMSTRONGS	ULTIMA #1413 - WHITE	24"x48"
GR-1	CEILING GRID	ARMSTRONGS	PRELUDE XL 15/16" - WHITE	
SNF-1	SYNTHETIC WOOD PANELS	CERTAINTEEED	TRIMBOARD SHEET (4'x8' SHEETS)	NATURAL WHITE - SMOOTH/SMOOTH
VP-1	VINYL SOFFIT PANELS	CERTAINTEEED	VINYL CARPENTRY VALUE SOFFIT, TRIPLE 4"-FULLY VENTED	COLONIAL WHITE, MATTE

DOOR SCHEDULE

MARK/LOCATION	DOOR							FRAME					HDW	REMARKS	
NO	ROOM (FROM / TO)	TYPE	WIDTH	HEIGHT	THICK	MAT	FINISH	HEAD DTL	JAMB DTL	SILL DTL	TYPE	MAT	FINISH	SET	
100	RETAIL / EXTERIOR	D3	(2) 3'-0"	7'-0"	1 3/4"	ALUM/SL	FLUOR	3/A2.1a	10/A2.1a	2/A2.1a	F2	ALUM	FLUOR	E-1	DOOR & FRAME NOTES, SEE STOREFRONT/CURTAINWALL NOTE #1
101	CORRIDOR / EXTERIOR	D4	3'-0"	7'-0"	1 3/4"	ALUM/SL	FLUOR	7/A2.1a	7/A2.1a SIM	2/A2.1a SIM	F3	ALUM	FLUOR	E-2	DOOR & FRAME NOTES, SEE STOREFRONT/CURTAINWALL NOTE #2
102	REC/UTILITY / EXTERIOR	D1	4'-0"	7'-0"	1 3/4"	INSUL HM	PT-**	5/A2.1a	4/A2.1a	6/A2.1a	-	HM INSUL	PT**	E-3	**INT= PT-2; EXT= PT-4 [MATCH BUILDING COLOR]
103	MEN'S RM / ALCOVE	D1	3'-0"	6'-8"	1 3/4"	SC/MOOD	FRE-FIN	1/A2.1a	1/A2.1a SIM	-	F1	HM	PT-1	P-2	
104	WOMEN'S RM / ALCOVE	D1	3'-0"	6'-8"	1 3/4"	SC/MOOD	FRE-FIN	1/A2.1a	1/A2.1a SIM	-	F1	HM	PT-1	P-2	
105	CLOSET-2 / REC/UTILITY	D1	2'-4"	6'-8"	1 3/4"	SC/MOOD	FRE-FIN	1/A2.1a	1/A2.1a SIM	-	F1	HM	PT-1	P-3	
106	W-IN STOR FRZR / REC/UTILITY	-	-	-	-	INSUL	FRE-FIN	-	-	-	-	-	-	-	BY WALK-IN MANUF
107	RETAIL / REC/UTILITY	D2	3'-0"	6'-8"	*	*	*	8/A2.1a	8/A2.1a SIM	-	*	*	*	*	* SEE ELIASON DOOR SPEC, THIS SHEET
108	MGR OFFICE / REC/UTILITY	D1	3'-0"	6'-8"	1 3/4"	SC/MOOD	FRE-FIN	1/A2.1a	1/A2.1a SIM	-	F1	HM	PT-1	O-1	
109	W-IN COOLER / REC/UTILITY	-	-	-	-	INSUL	FRE-FIN	-	-	-	-	-	-	-	BY WALK-IN MANUF
110	W-IN FREEZER / W-IN COOLER	-	-	-	-	INSUL	FRE-FIN	-	-	-	-	-	-	-	BY WALK-IN MANUF
111	RETAIL / REC/UTILITY	D2	3'-0"	6'-8"	1 3/4"	SC/MOOD	FRE-FIN	1/A2.1a	1/A2.1a SIM	-	F1	HM	PT-1	P-1	
112	CLOSET-1 / REC/UTILITY	D2	2'-6"	6'-8"	1 3/4"	SC/MOOD	FRE-FIN	1/A2.1a	1/A2.1a SIM	-	F1	HM	PT-1	P-3	

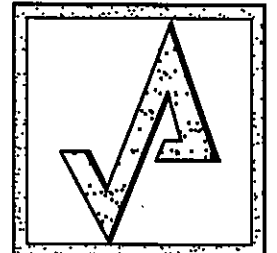


FOR HM FRAMES, KNOCKDOWN FRAMES @ INT LOCATIONS WELDED @ GALV FRAMES @ EXT LOCATIONS



FRAME TYPES
SCALE 1/4"=1'-0"

DOOR TYPES
SCALE 1/4"=1'-0"



AHARONIAN
& ASSOCIATES INC.
ARCHITECTS

MAINE LICENSED ARCHITECT

310 George Washington Highway

Suite 100

Smithfield, Rhode Island

0 2 9 1 7

T 401-232-5010

F 401-232-5010

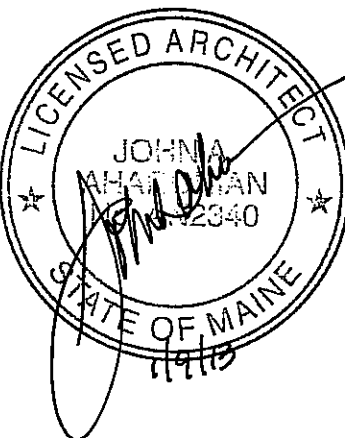
WWW.ARCH-ENG.COM

DISCLAIMER

OWNERSHIP AND USE OF DOCUMENTS, DRAWINGS AND SPECIFICATIONS ARE INSTRUMENTS OF PROFESSIONAL SERVICE AND SHALL REMAIN THE PROPERTY OF THE ARCHITECT. THESE DOCUMENTS ARE NOT TO BE USED, IN WHOLE OR IN PART, FOR ANY OTHER PROJECTS OR PURPOSES OR BY ANY OTHER PARTIES THAN THOSE PROPERLY AUTHORIZED BY CONTRACT WITHOUT THE EXPRESS WRITTEN AUTHORIZATION OF THE ARCHITECT.

REVISIONS

NUMBER	REMARKS	DATE
1	OWNER REVISIONS	1.9.13



FOR CONSTRUCTION

PROJECT TITLE

Cumberland
Farms
100 Crossing Blvd, Framingham, Massachusetts

STORE #5619

V #1941

939 ROUTE 1

YARMOUTH, ME

Cumberland County

DRAWING TITLE

DOOR & FINISH
SCHEDULES & DETAILS

DATE NOV 12, 2012

PROJ NO 1253

DRAWN BY JJ

CHECKED BY AZ

DRAWING NUMBER

A2.1