

ABBREVIATIONS	
VAV	VARIABLE AIR VOLUME
S/A	SUPPLY AIR
R/A	RETURN AIR
O/A	OUTSIDE AIR
E/A	EXHAUST AIR
CFM	CUBIC FEET PER MINUTE
MVD	MANUAL VOLUME DAMPER (OPPOSED BLADE TYPE)
FD	FIRE DAMPER
AHU	AIR HANDLING UNIT
CU	CONDENSING UNIT
E	EXISTING
R	RE-LOCATED

SYMBOL LEGEND	
	VAV TERMINAL UNIT AS NOTED
	EXISTING EQUIPMENT AS NOTED
	SUPPLY AIR DIFFUSER AS NOTED
	RETURN/TRANSFER GRILLE AS NOTED
	DUCTWORK AS NOTED
	DUCT TRANSITION
	TAKE-OFF WITH VOLUME DAMPER FOR FLEXIBLE DUCT
	TYPE B FIRE DAMPER W/ACCESS DOOR
	MANUAL VOLUME DAMPER
	THERMOSTAT AS NOTED
	FLEXIBLE DUCT, U.L. CLASS 1
	OVERTIME A/C CARD READER
	CONNECTION TO EXISTING EQUIPMENT

HVAC CONTROLS NOTE

AIR CONDITIONING CONTRACTOR SHALL PROVIDE OR CAUSE TO BE PROVIDED ALL CONTROLS, CONTROL WIRING & CONTROL, POWER WIRING & CONTROL, AND AIR VOLUME TERMINAL UNITS. IN ADDITION CONTRACTOR SHALL PROVIDE INTERFACE WITH THE EXISTING EMS SYSTEM COMPUTER GRAPHICALLY DEPICTING MECHANICAL LAYOUT WITH ON SCREEN DISPLAYS THAT ARE CONTROLLED BY THE EXISTING AND/OR ENERGY MANAGEMENT SYSTEM (EMS). PROGRAMMING IS TO ALSO INCLUDE INTERFACING TO EXISTING PROGRAM DESIGNED TO CONTROL THE EXHAUSTING USAGE OF THE EXHAUST SYSTEM. CONTRACTOR SHALL VERIFY ALL OPERATIONAL CONTROL SYSTEM SPECIFICATIONS AND DETAILS. A COMPLETE AND OPERATIONAL CONTROL SYSTEM IS TO BE PROVIDED FOR THE ENTIRE TENANT SPACE. VERIFY WITH CONTROLS CONTRACTOR ANY ADDITIONAL DETAILS WHICH MUST BE INCLUDED. PRIOR TO BID.

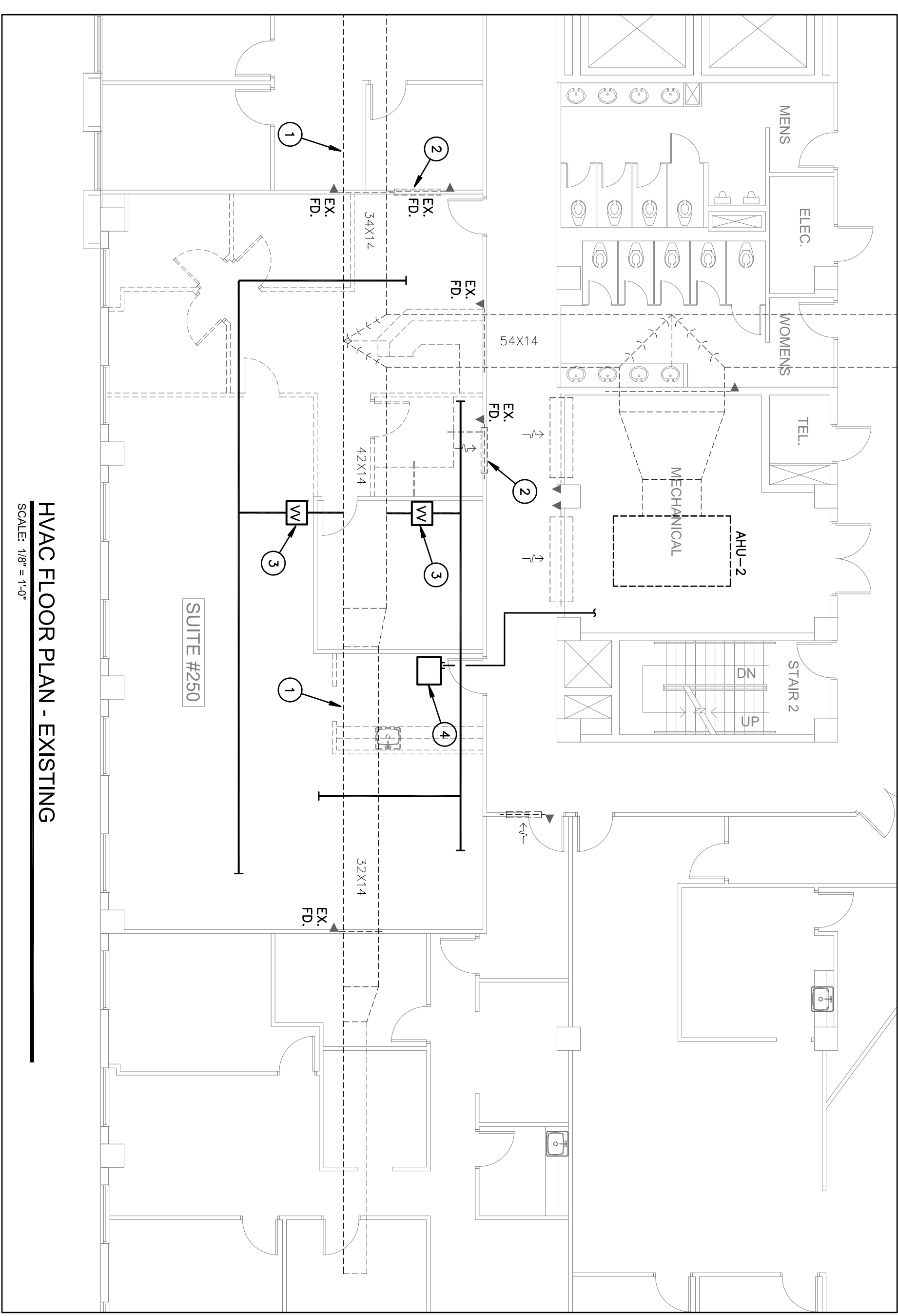
CONTRACTOR IS TO PROVIDE CONTROLS AS NOTED ABOVE FOR ALL NEW VAV TERMINAL BOXES SHOWN ON THESE PLANS.

THE CEILING SPACE THROUGHOUT THIS PROJECT IS A RETURN AIR PLENUM. NO COMBUSTIBLE OR TOXIC MATERIALS ARE ALLOWED ABOVE THE CEILING.

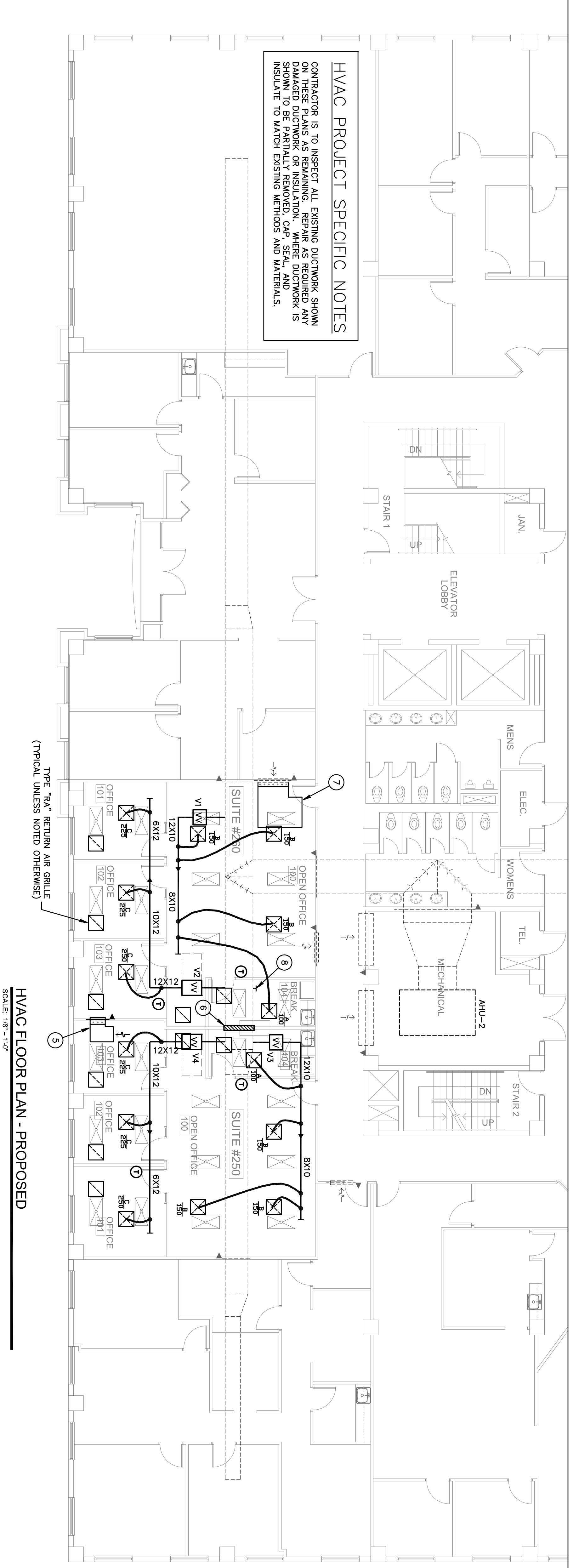
- DRAWING KEYNOTES:**
- EXISTING RECTANGULAR MAIN SUPPLY AIR DUCT TO REMAIN.
 - EXISTING R/A TRANSFER OPENING ABOVE CEILING, WITH FIRE DAMPER, TO REMAIN.
 - EXISTING TERMINAL BOX TO BE REMOVED. REMOVE ALL ASSOCIATED DUCTWORK AND OTHER RELATED EQUIPMENT.
 - EXISTING SPLIT SYSTEM AIR HANDLING UNIT TO BE REMOVED. PULL REFRIGERANT PIPING BACK TO MECHANICAL ROOM, CAP AND STORE IN COIL FOR FUTURE USE. CONDENSING UNIT ON ROOF IS TO REMAIN. REMOVE ALL OTHER ASSOCIATED EQUIPMENT.
 - 24X12 RETURN AIR TRANSFER OPENING IN WALL ABOVE CEILING, WITH SECURITY BARS AND DUCTBOARD SOUND ATTENUATION BOOT.
 - INSTALL APPROVED REFRIGERANT SYSTEM AROUND EXISTING MAIN S/A DUCT AT NEW TENANT SEPARATION WALL.
 - INSTALL SECURITY BARS AND DUCTBOARD SOUND BOOT AT EXISTING R/A OPENING. OPENING IS APPROXIMATELY 48X14. FIELD VERIFY EXACT DIMENSIONS.
 - PROVIDE SHEETMETAL CAP SEAL AND INSULATE OPENING IN MAIN SUPPLY AIR DUCT AFTER REMOVAL OF TERMINAL BOX. MATCH EXISTING DUCT MATERIALS.

HVAC PROJECT SPECIFIC NOTES

CONTRACTOR IS TO INSPECT ALL EXISTING DUCTWORK SHOWN ON THESE PLANS AS REMAINING. REPAIR AS REQUIRED ANY DAMAGED DUCTWORK OR INSULATION. WHERE DUCTWORK IS SHOWN TO BE PARTIALLY REMOVED, CAP SEAL AND INSULATE TO MATCH EXISTING METHODS AND MATERIALS.



HVAC FLOOR PLAN - EXISTING
SCALE: 1/8" = 1'-0"



HVAC FLOOR PLAN - PROPOSED
SCALE: 1/8" = 1'-0"

Gilman & Associates, Inc.
MECHANICAL & ELECTRICAL ENGINEERS
507 NORTH LAKESIDE DRIVE
Lake Worth, FL 33460 C.A.*009078
(561) 582-0210 Fax (561) 582-8212
RONALD D. GILMAN P.E. *37933

birse design inc.

5300 woodland lakes drive
palm beach gardens, fl 33418
phone 561-249-4001
fax 772-409-8684
AA26001615

2ND FLOOR SPEC SUITES

FOUNTAIN SQUARE
2600 N MILITARY TRAIL
BOCA RATON, FL

PROJECT NUMBER 26008

REVISIONS

1	
2	
3	
4	
5	

DRAWN BY DR
CD
4-11-12

M-1