

GOLD COAST FEED

WELLINGTON, FLORIDA

MAY 15, 2010

INDEX OF DRAWINGS

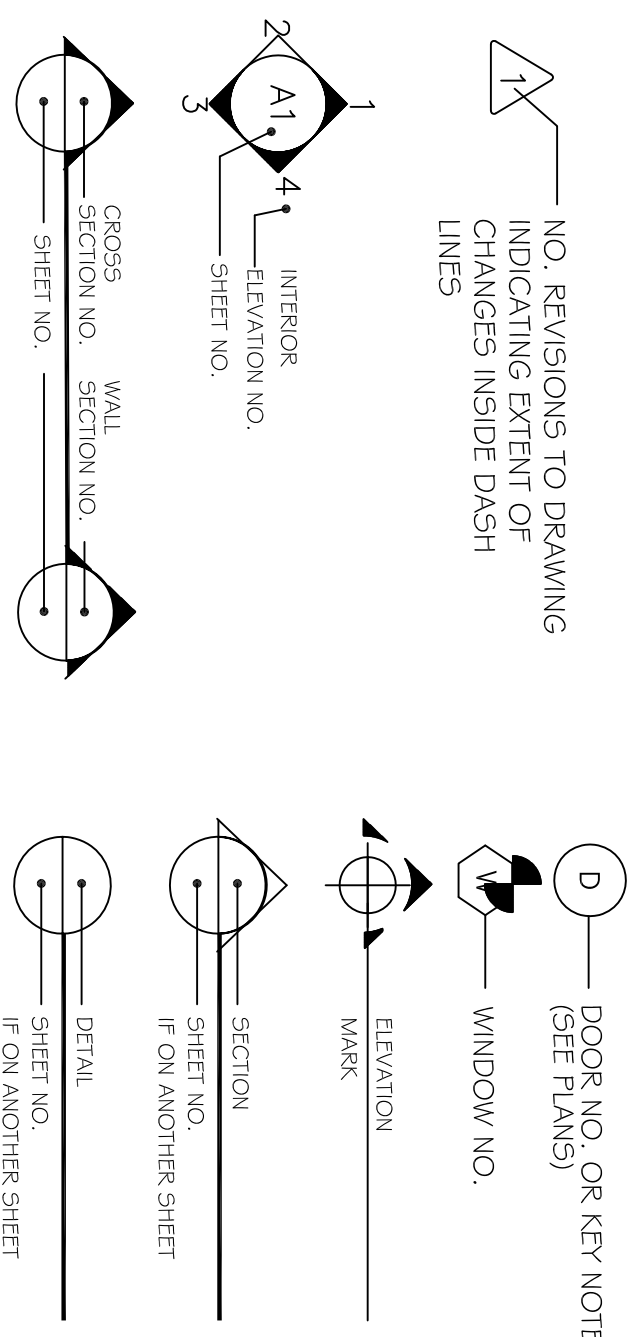
ARCHITECTURAL

C-1 COVER SHEET / SITE PLAN
A-1 DEMOLITION PLAN & PROPOSED FLOOR PLAN
A-2 PROPOSED CEILING PLAN & LIFE SAFETY PLAN

MECHANICAL

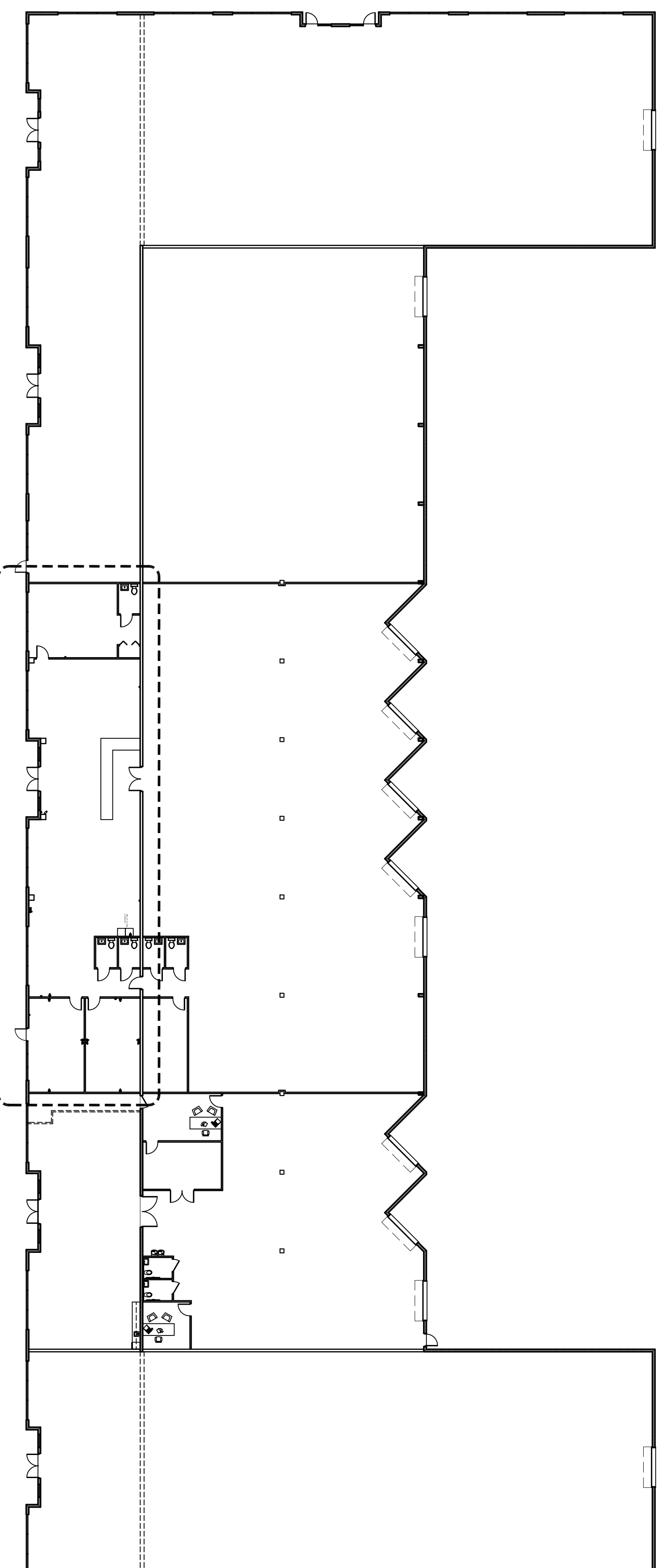
M-1 MECHANICAL PLAN
M-2 MECHANICAL DETAILS

SYMBOL LEGEND



ABBREVIATIONS

A.F.F.	ABOVE FINISHED FLOOR	I.M.	ICE MAKER	SM.	SMALL
ALUM.	ALUMINUM	INT.	INTERIOR	STD.	STANDARD
ANOD.	ANODIZED	H.C.	HANDICAP ACCESSIBLE	STR.	STRUCTURAL
B.O.B.	BORDER OF BOARD	H.M.	HOLLOW METAL	STL.	STEEL
CAB.	CABINET	H.S.	HOLLOW	TRAF.	TRAP
CIG.	CEILING	J.S.	JOIST	TRP.	TYPICAL
CLOS.	CLOSET	L.V.	LAMINATED	VCT.	VINYL COMPOSITION
CUR.	CURB	L.W.	LANYARD	TE	TILE
CMU	CONCRETE MASONRY	M.A.N.F.	MANUFACTURED	V.	VERTICAL
COL.	COLUMN	M.C.	MISCELLANEOUS	V.C.	VENTILATION ON JOB
CONC.	CONCRETE	M.D.	MOLDING	W.	WITH
CONT.	CONTINUOUS	M.E.	MASONRY OPENING	W.C.	WATER CLOSET
C.O.	CASE OPERATOR	M.F.	MOUNTED	W.D.	WOOD
D.B.	DOUBLE	M.I.D.	MOUNTED	W.L.	WOOD LEASER
DN.	DOWN	M.L.	MILLION	W.N.	WINDOW
DR.	DOOR	M.C.	MASONRY		
DRL.	DETAIL	N.C.	NOT IN CONTRACT		
DWG.	DRAWING	O.	OPENING		
E.A.	EACH	O.D.	OUTSIDE DIAMETER		
E.L.	ELEVATION	OP.	OPENING		
ELEC.	ELECTRICAL	FL.	PLATE		
ELEV.	ELEVATION	FLANK	FLANK LAMINATE		
ES.	ESKELINT	FR.	FRAME		
ESBP	ESKELINT BRISTLE	FRD.	FRAMING		
EXT.	EXTENSION	FRM.	FRAMING		
F.D.	FIBER BOARD	FRP.	FIBER BOARD		
FD.	FLOOR DRAIN	FRS.	FIBER REINFORCED		
FE.	FIRE EXTINGUISHER	R.	RADIANT		
FL.	FLOOR	RAD.	RADIANT		
FIB.	FIBERGLASS FIBER	RE.	REFERENCE		
FRP.	FIBERGLASS REINFORCEMENT	RECF.	RECEIVED		
F.V.	FIELD VERIFY	REF.	REFERENCE		
GAL.	GAGE	REF.	REFERENCE		
G.L.	GLASS	R.I.	REINFORCED		
GL.	GLASS	R.O.	ROUGH OPENING		
GRP. BD.	GYPSUM BOARD	S.C.	SCHEDULE		



AREA OF PROPOSED RENOVATION SEE ENLARGED FLOOR PLAN FOR INFORMATION

OVERALL VICINITY MAP

SCALE : N.T.S.

YATES ASSOCIATES
ARCHITECTURE INC.

ARCHITECTURE •
PLANNING •
INTERIOR DESIGN •

AA-26001673
215 SOUTH OLIVE, SUITE 500
WEST PALM BEACH, FL 33401
TEL: 561-653-8280 FAX: 561-653-9279
WWW.YATESARCHITECTURE.COM
EMAIL: KELLY@YATESARCHITECTURE.COM

DATE: MAY 15, 2011
JOB NO: 114818
DESIGN BY: K.D.Y.
DRAWN BY: D.C.M.
APPROVED: K.D.Y.
REVISIONS:

A NEW RETAIL STORE FOR:
GOLD COAST FEED
13501 SOUTHSHORE DRIVE
WELLINGTON
FLORIDA

PERMIT
SUBMITTAL
SET
5-24-11

SEAL

KELLY D. YATES
FLORIDA AR 13706

SHEET NO.

C-1