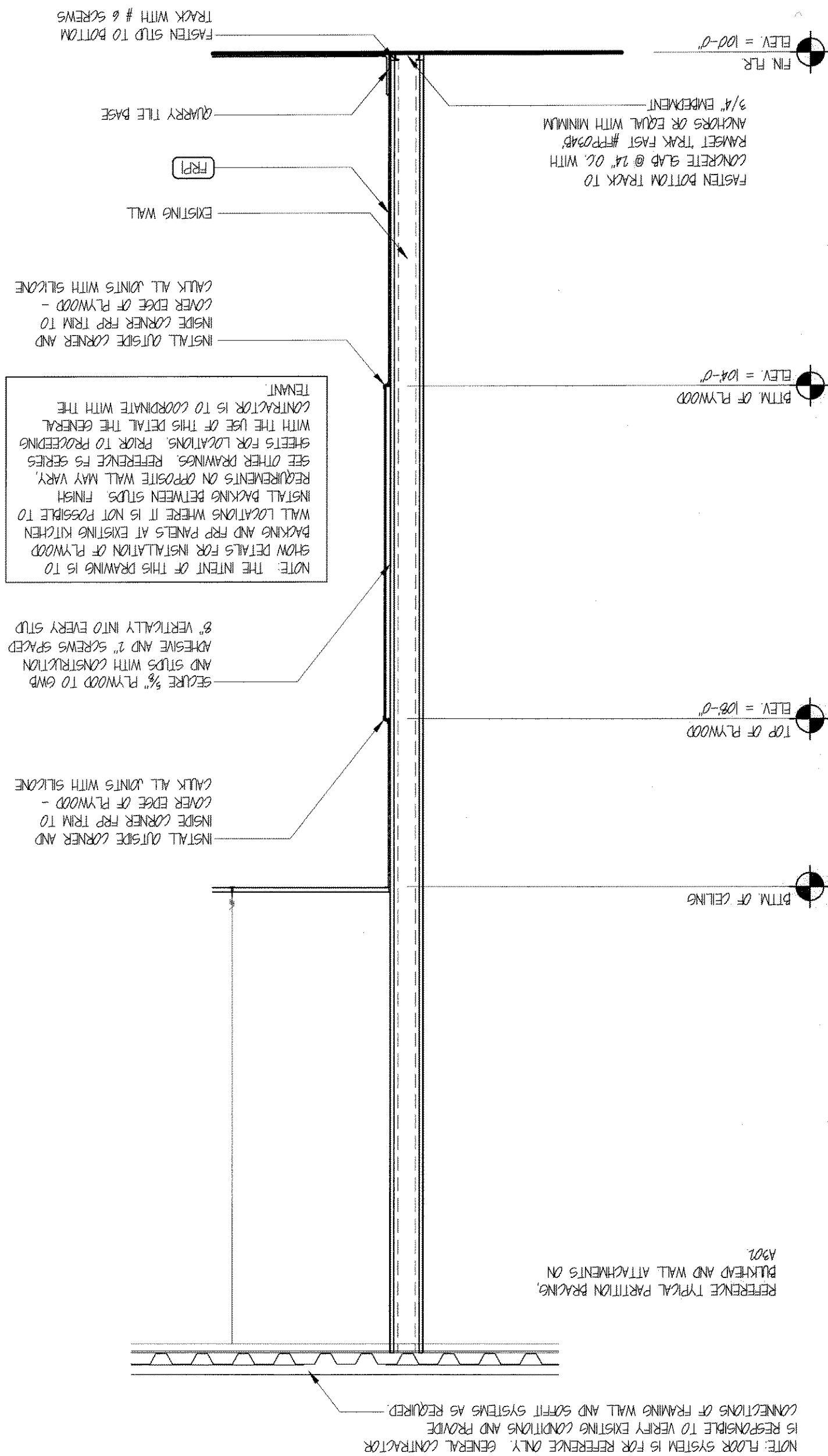


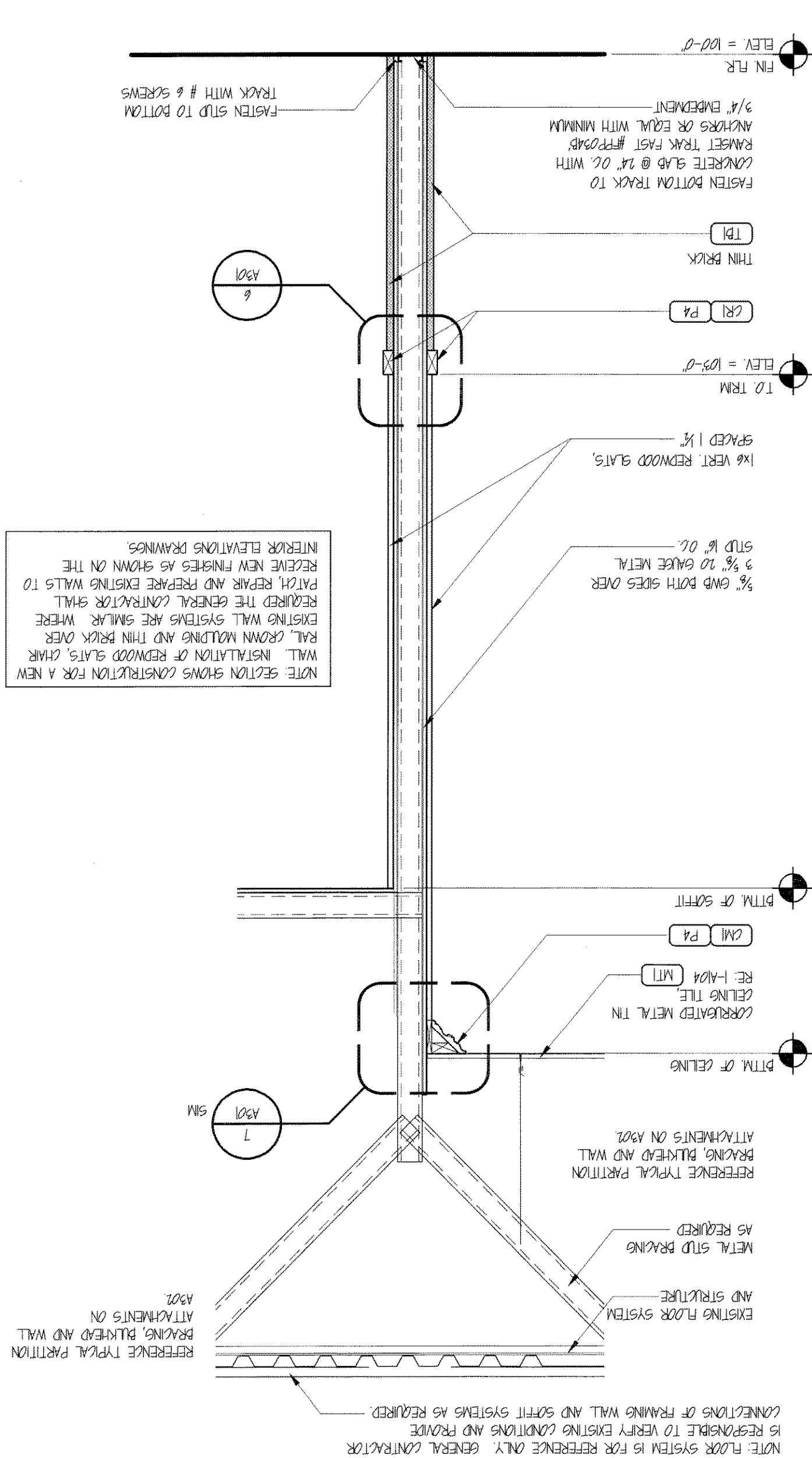
## SECTION-KITCHEN WALL

SCALE:  $3/4" = 1'-0"$



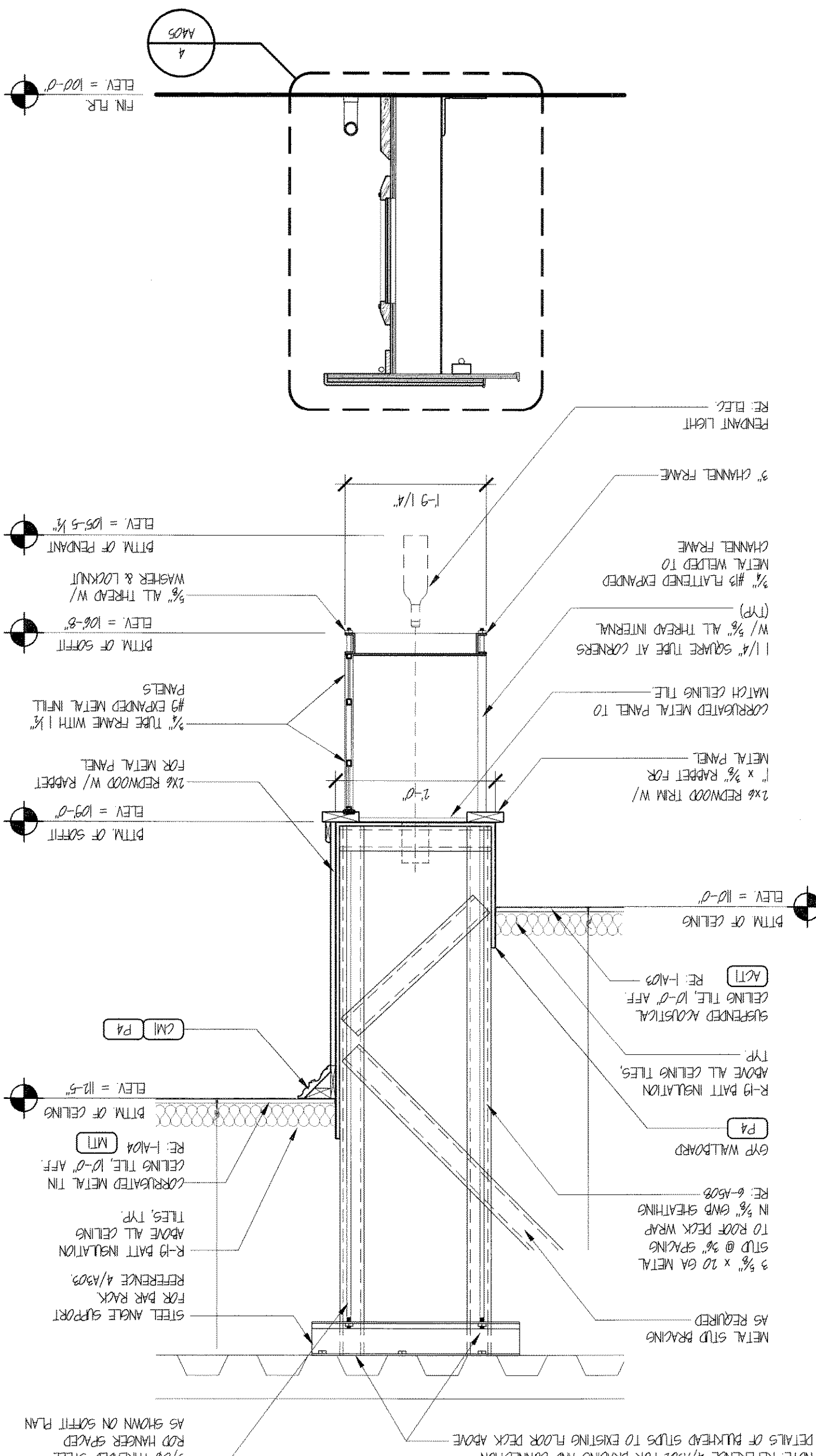
## SECTION-TYPICAL WALL

SCALE: 3/4" = 1'-0"



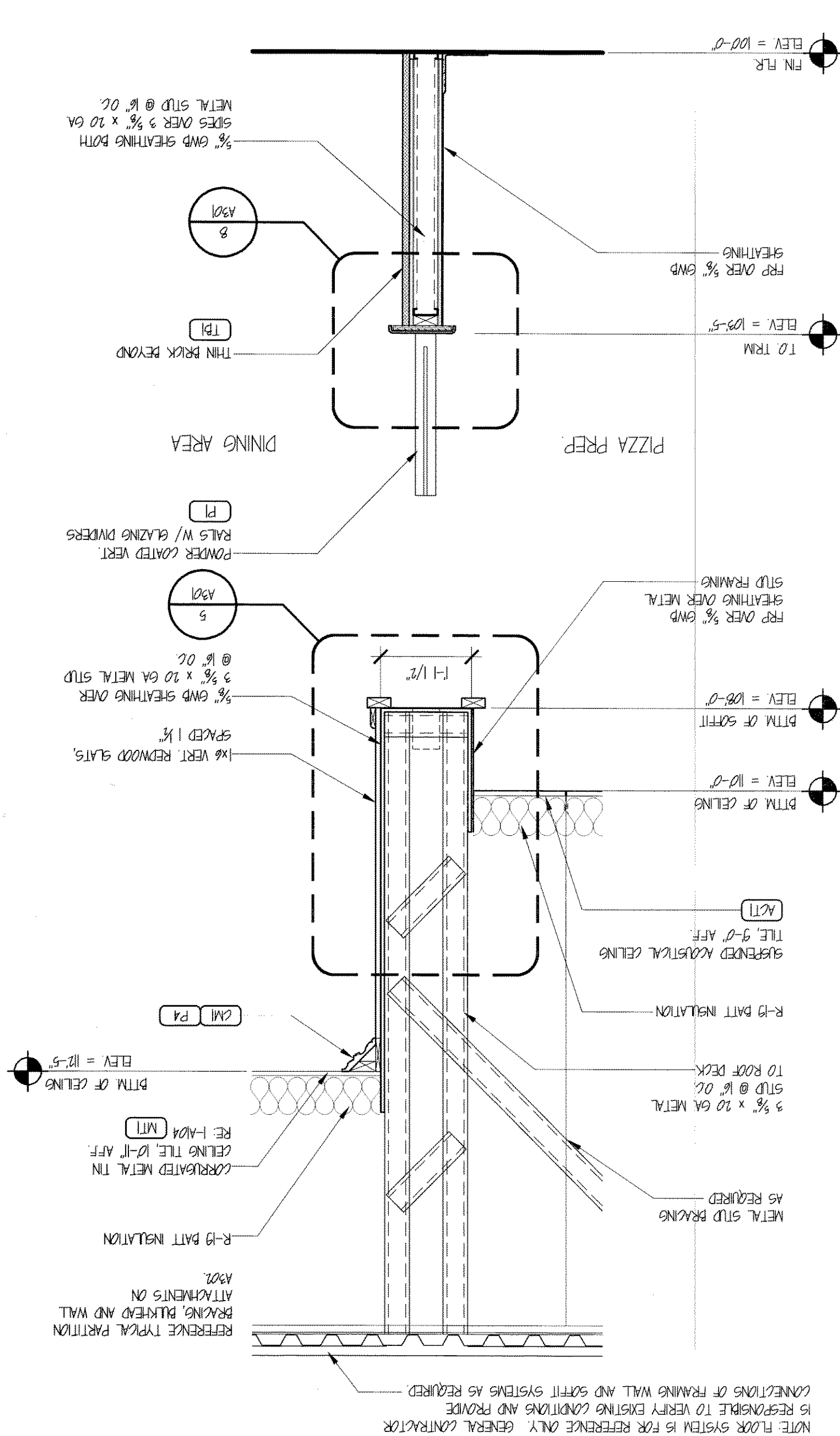
## SECTION-BAR

SCALE: 3/4" = 1'-0"



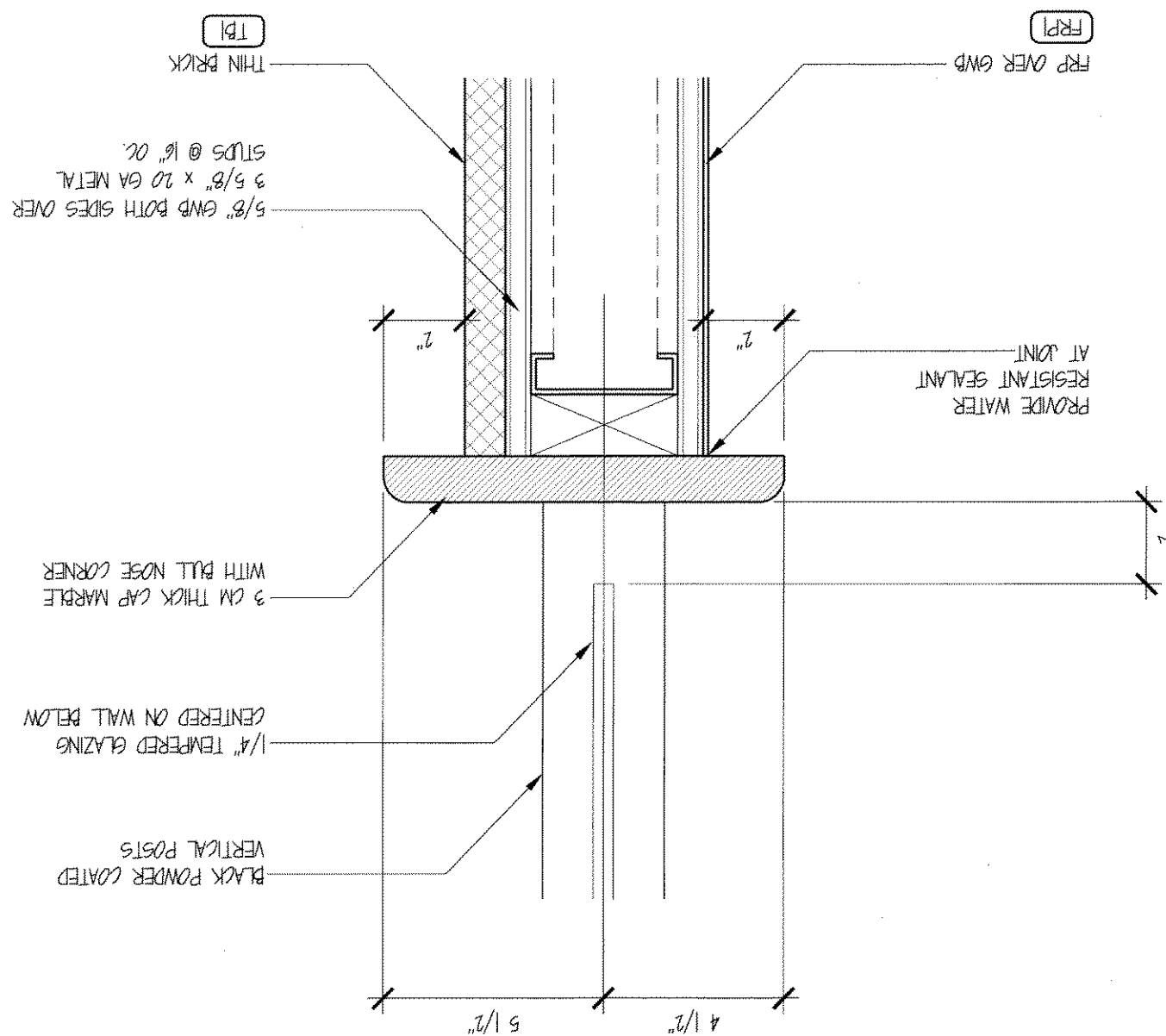
SECTION-PIZZA PREP

SCALE:  $3/4" = 1'-0"$



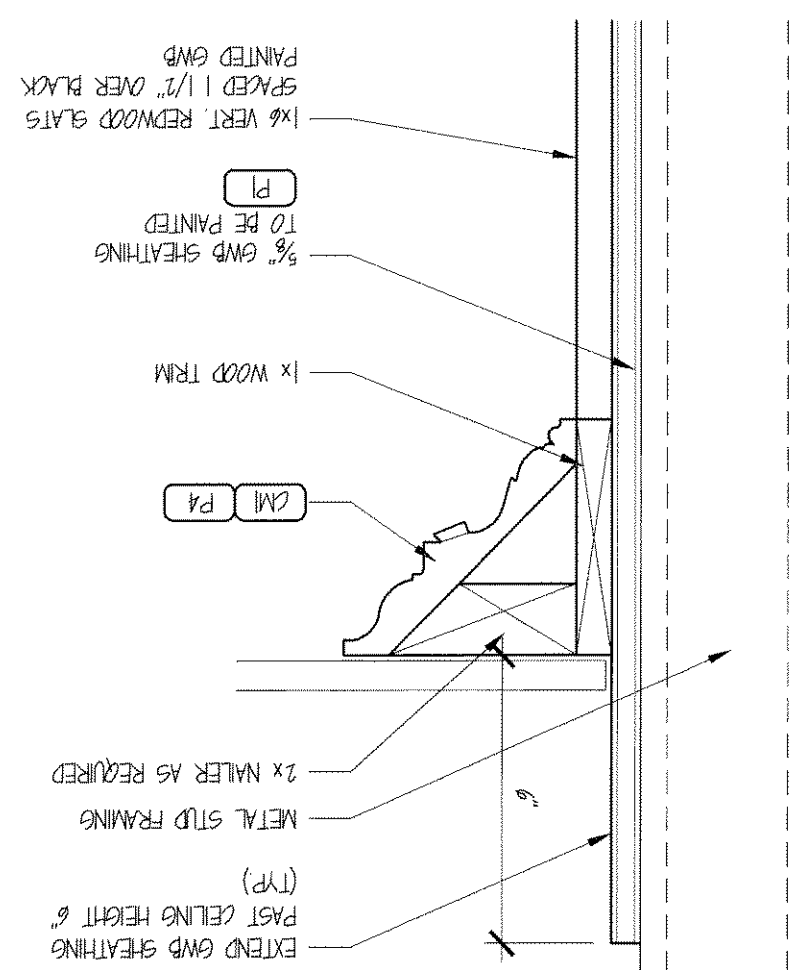
8 DETAIL-PIZZA PREP WALL

SCALE: 3" = 1'-0"



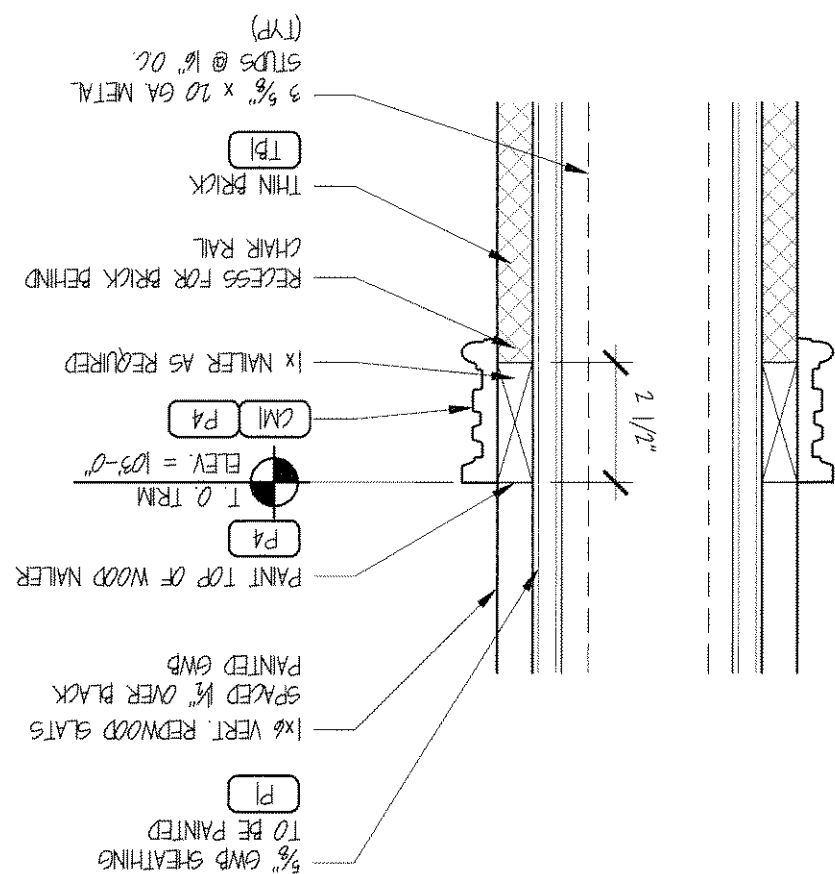
DETAIL-CROWN MOULDING-TYPICAL

SCALE: 3" = 1'-0"



DETAIL-CHAIR RAIL-TYPICAL

SCALE: 3" = 1'-0"



DETAIL-PIZZA PREP SOFFIT

SCALE: 1/2" = 1'-0"

