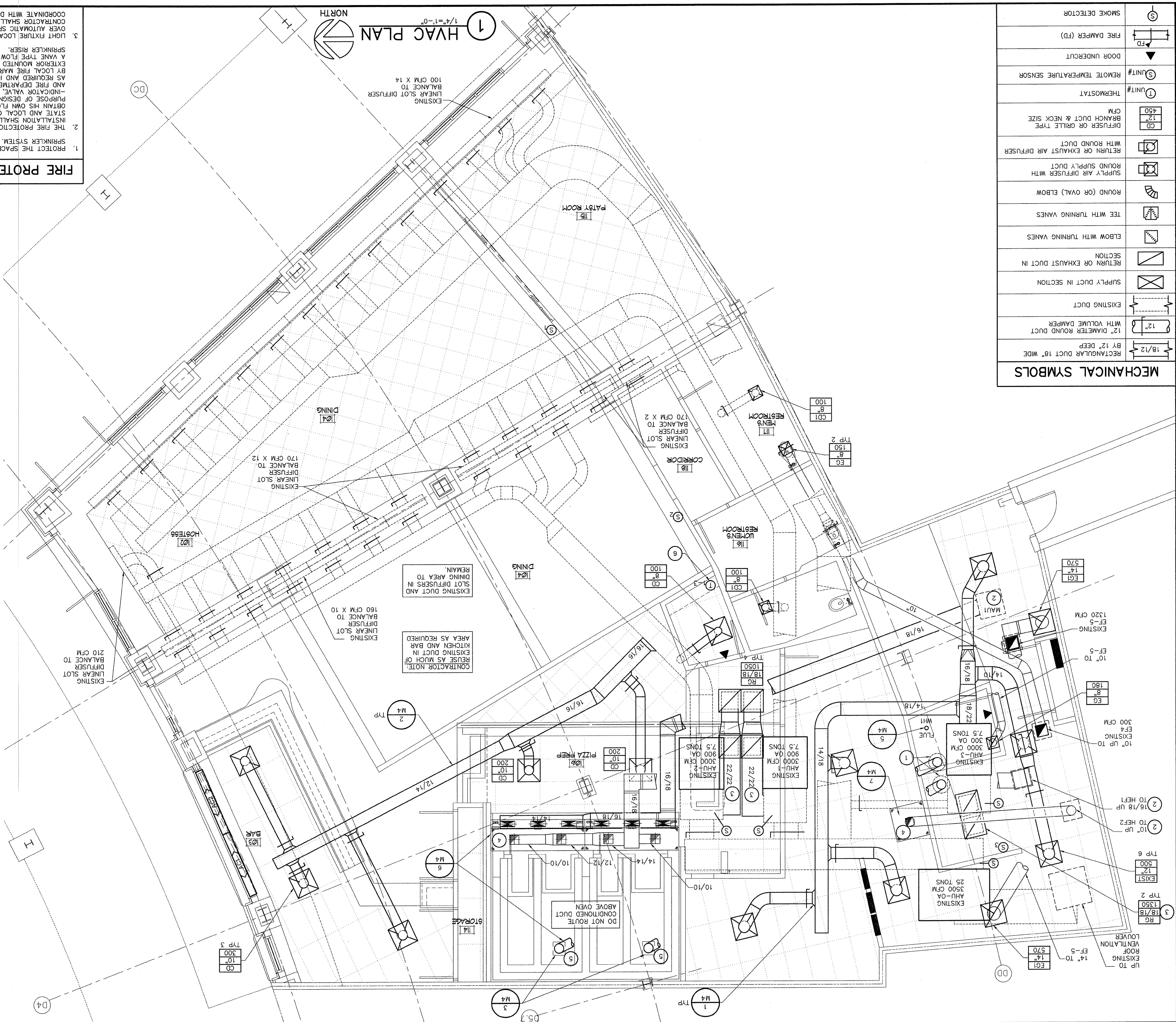


MECHANICAL SYMBOLS				
RECTANGULAR DUCT 18" WIDE BY 12" DEEP				
12" DIAMETER ROUND DUCT WITH VOLUME DAMPER				
EXISTING DUCT				
SUPPLY DUCT IN SECTION				
RETURN OR EXHAUST DUCT IN SECTION				
ELBOW WITH TURNING VANES				
TEE WITH TURNING VANES				
ROUND (OR OVAL) ELBOW				
SUPPLY AIR DIFFUSER WITH ROUND SUPPLY DUCT				
RETURN OR EXHAUST AIR DIFFUSER WITH ROUND DUCT				
DIFFUSER OR GRILLE TYPE BRANCH DUCT & NECK SIZE	<table><tr><td>CD</td><td>42</td><td>450</td></tr></table>	CD	42	450
CD	42	450		
THERMOSTAT	① UNIT#			
REMOTE TEMPERATURE SENSOR	② UNIT#			
DOOR UNDERCUT				
FIRE DAMPER (FD)				
SMOKE DETECTOR				



FIRE PROTECTION NOTES

1. PROTECT THE SPACE BY A WET PIPE SPRINKLER SYSTEM, REFER TO SPECIFICATIONS.
2. THE FIRE PROTECTION SYSTEM MATERIALS AND INSTALLATION SHALL COMPLY WITH NFPA 13, STATE AND LOCAL CODES. CONTRACTOR SHALL OBTAIN HIS OWN FLOW READINGS FOR INDIVIDUAL PROTECTION PREVENTERS, AND FIRE DEPARTMENT SMOKE INDICATIONS AS REQUIRED, AND IN LOCATIONS AS DIRECTED BY LOCAL FIRE MARSHAL. PROVIDE AN EXTENSIVE MOUNTED WATER ALARM GONG AND A VANE TYPE FLOW DETECTOR IN MAIN SPRINKLER RISER.
3. ALL FUTURE LOCATIONS TAKE PRECEDENCE OVER AUTOMATIC SPRINKLER LOCATIONS. CONTRACTOR SHALL ROUTE LINES TO COORDINATE WITH DUCTWORK.

KITCHEN
EXHAUST NOTES

0. EXACT LOCATION WITH OWNER, MOUNT 48" AFF
MAX.
1. SYSTEMS SHALL BE PROVIDED IN ACCORDANCE
WITH FLORIDA MECHANICAL CODE.
2. DEVIATIONS FROM THE DESIGN MAY RESULT IN
UNACCEPTABLE AIR QUALITY, COMFORT
AND/OR ENERGY CONSUMPTION.
3. REFER TO CAPTIVE AIRE DRAWING.

KEYNOTES

1. SYSTEMS SHALL BE PROVIDED IN ACCORDANCE WITH FLORIDA MECHANICAL CODE AND MECHANICAL SPECIFICATIONS ON SHEET M6.
2. ALL WORK SHALL BE PERFORMED IN STRICT ACCORDANCE WITH LATEST EDITIONS OF ALL APPLICABLE LOCAL, STATE AND NATIONAL CODES, AND INSTALLED ACCORDING TO MANUFACTURER'S RECOMMENDATIONS.
3. CONTRACTOR SHALL VERIFY PROPER OPERATION OF EXISTING HVAC EQUIPMENT.
4. CONTRACTOR SHALL PROVIDE ALL MATERIALS, INCLUDING OFFSETS REQUIRED TO COORDINATE WITH OTHER TRADES AND STRUCTURAL MEMBERS.
5. REFER TO SHEET M3 FOR HVAC EQUIPMENT SCHEDULES, AND AIR DEVICE SCHEDULES.
6. PROVIDE FIRE DAMPERS WHERE DUCTWORK PENETRATES RAISED FLOORS AND/OR CEILINGS.
7. EXHAUST OUTLETS SHALL BE LOCATED ON LESS THAN 10 FT. FROM AIR INTAKE OR BUILDING OPENING.
8. DRAWINGS ARE DIAGRAMMATIC. CONTRACTOR SHALL FIELD VERIFY EXACT CONDITIONS.
9. ALL UNITS TO HAVE DUCT MOUNTED SMOKE DETECTORS. PROVIDE ACCESS.
10. MECHANICAL CONTRACTOR SHALL PROVIDE LOW VOLTAGE WIRING FOR SMOKE DETECTORS AND TEMPERATURE CONTROLS.
11. REFER TO ARCHITECTURAL REFLECTED CEILING PLAN FOR FINAL GRILLE AND DIFFUSER LOCATIONS AND COORDINATE AS REQUIRED.
12. CONTRACTOR MAY AVOID ROUND DUCT OF RECTANGULAR DUCTWORK.
13. NO DUCTWORK SHALL BE SUPPORTED FROM METAL ROOF DECK.
14. ALL RECTANGULAR SUPPLY AND RETURN DUCT ELBOWS TO HAVE TURNING VANES PER SMACNA.
15. COORDINATE MECHANICAL WORK AND SCHEDULING WITH ALL OTHER TRADES.
16. SUPPLY DUCTWORK MUST BE INSULATED. REFER SPECS ON M6.
17. RETURN DUCTWORK MUST BE INSULATED. REFER SPECS ON M6.
18. ALL DUCT DIMENSIONS ARE NET FREE AREA. SEAMS WHEN VENTILATING CLEARANCES.
19. FLEXIBLE DUCTWORK NOT ALLOWED OVER 5'-0" IN LENGTH.
20. ALL WORK SHALL BE PERFORMED IN ACCORDANCE WITH LANDFORD REQUIREMENTS.


GENERAL NOTES

-

LW

FIRST FLOOR HVAC PLAN

Issue Date:

project: DOWNTOWN at the
room:
approved: 
issue Date: 12/28/2010

NO.
BUSINESS

Revisions:
No. _____
Date _____
Description _____

This document, and the ideas and designs incorporated herein, as an instrument of professional service, the property of Aaron M. King, and not to be used, in whole or in part, in any other project, without the written authorization of Aaron M. King.

DOCUMENTS FOR:

DOWNTOWN at the GARDENS
GRIMALDI'S PIZZERIA
11701 LAKE VICTORIA GARDENS AVE., STE 310
PALM BEACH GARDENS, FL 33410



MPW ENGINEERING

Mechanical & Electrical Consulting & Services
110 W. 7TH STREET • SUITE 600 • TULSA, OK 74119
(918) 582-4088 • (918) 582-4087 FAX

GRIMALDI'S

COAL BRICK-OVEN PIZZERIA
4000 N Scottsdale Road, Suite 203
Scottsdale, Arizona 85252
Phone: 405.664.3147 Fax: 405.562.1283

ENGINEER OF RECORD, LLC #53716

SCOTT C. WEBB, PE

91-62-21

2000

Handwritten signature: *[Signature]*

100-443887-100

1992