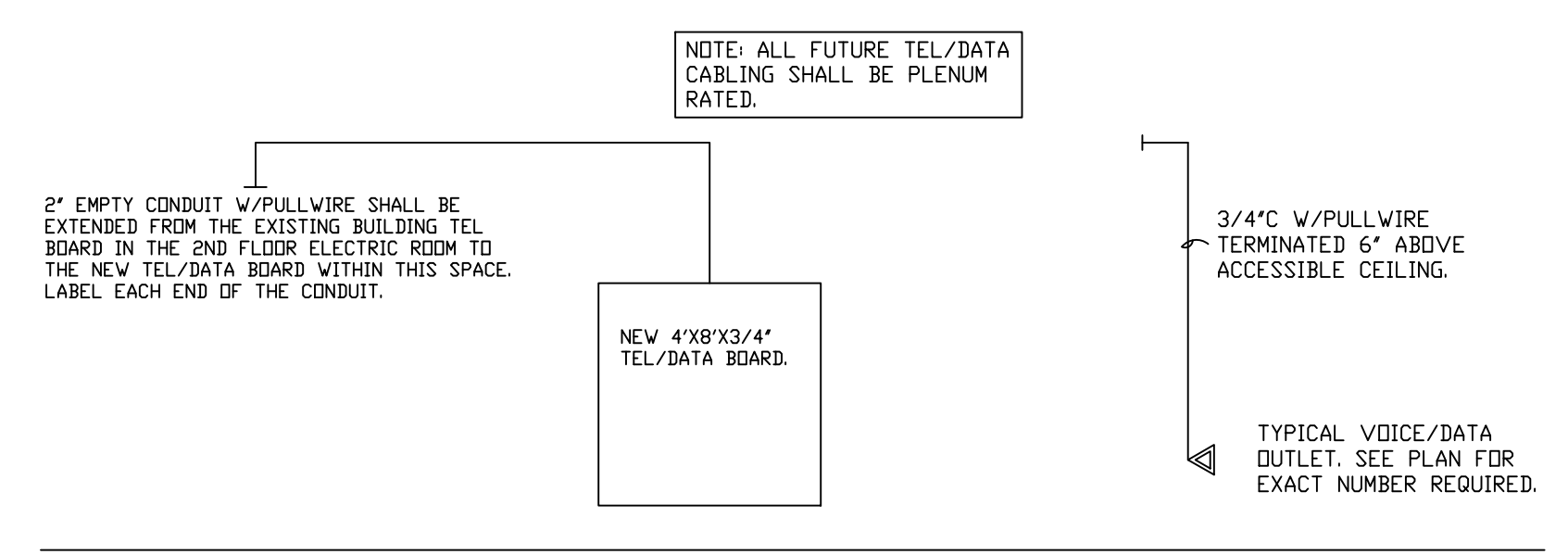
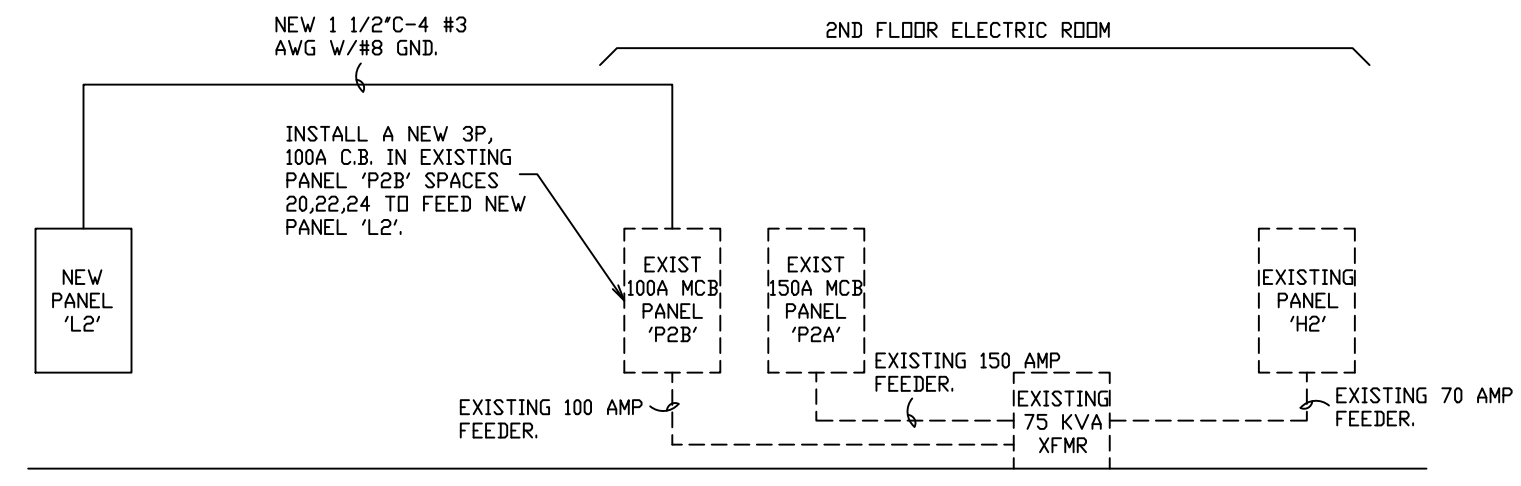


**POWER PLAN**  
 1/4" = 1'-0"



**TELEPHONE/DATA RISER DIAGRAM**  
 SCALE: NTS



**ELECTRICAL RISER DIAGRAM nts**

**ELECTRICAL LEGEND:**

- RECESSED FLUORESCENT.
- EXIT LIGHT.
- LIGHT FIXTURE TYPE DESIGNATION.
- DUPLEX RECEPTACLE, WHITE, UP 18" AFF.
- QUAD RECEPTACLE, WHITE, UP 18" AFF.
- TEL/DATA OUTLET, WHITE, UP 18" AFF.
- GFI
- TOGGLE TYPE WALL SWITCH, WHITE.
- TOGGLE TYPE 3 WAY WALL SWITCH, WHITE.
- OCCUPANCY SENSOR WALL SWITCH, WHITE.
- FIRE ALARM SMOKE DETECTOR.
- FIRE ALARM HORN/STROBE.

**OCCUPANCY SENSOR DEVICE SCHEDULE**

- MANUFACTURED BY RAB.
- WALL SWITCH W/OCCUPANCY SENSOR & BUILT IN POWER PACK, RAB #LDS10001-277-WHITE.
- CEILING MOUNTED OCCUPANCY SENSOR RAB #LDS2500-277-WHITE.

PANELBOARD SCHEDULE 'L2' (NEW)

120/208	VOLTS	3 PHASE	4 WIRE	125 AMP MAIN	125 AMP BUS	24 BRANCH POLES	X FULL NEUTRAL			
FLUSH MOUNTING	125 AMP MAIN LUGS				SHORT CIRCUIT I=	22,000 AMP-SYM-RMS				
COND. & WIRE	A	B	C	LOAD	BKR P A T	C B U S	C BKR P A	LOAD	AMPS	COND. & WIRE
1/2" #12	8			RECEPTACLES	1 20	1	20	SERVER ROOM RECEPT	6	1/2" #12
	8				3 4	2	1		6	
	6				7 8	5 6			6	
	6				9 10	11 12		COPIER	10	
	5				13 14			APPLIANCE	6	
					15 16			DISHWASHER	10	
	2			CIRCULATION FAN SPACE	17 18			REFRIGERATOR	6	
					19 20			INSTANT W/H	30	3/4" #8
					21 22			SPACE	30	
					23 24					
TOTAL AMPS		BUS A=		BUS B=		BUS C=		CONNECTED KVA=		
		41		58		57		18.7		

PANEL 'L2' SHALL BE EQUAL TO SQUARE D TYPE 00 LOAD CENTER.

COPYRIGHT 2012 / ALAN STRASSLER ARCHITECTS, INC. / ALL RIGHTS RESERVED / UNAUTHORIZED REPRODUCTION OR MODIFICATION OF THESE PLANS OR DRAWINGS IS STRICTLY PROHIBITED.

**PROPOSED TENANT IMPROVEMENT FOR SUITE 220**

3399 PGA BLVD., PALM BEACH GARDENS, FL

1/4" = 1'-0"

POWER PLAN

DATE: 10/25/13  
 DRAWN BY: DRJ  
 PROJ. NO. 1309  
 REVISED:

**J & C** JONES & CONDE, LLC  
 4440 PGA BOULEVARD  
 PALM BEACH GARDENS, FL 33410  
 CERTIFICATE OF AUTHORIZATION #29783  
 DAVID R. JONES, PE #41042  
 TEL (561) 309-9017  
 EMAIL: david\_jones\_conde@bellsouth.net

SHEET:

**E2**