

FAN SCHEDULE

SELECTION DATA				FAN DATA				MOTOR DATA				GENERAL DATA				
TAG	SERVICE AREA	MANUF.(*)	MODEL	CONFIG.	CFM	ESP ("WG)	SONES	HP	RPM	DRIVE	VOLTAGE	WEIGHT (LBS)	DIMENSIONS L"xW"xH"	OPENING L"xW"	CONTROL	ACCESSORIES
EF-1	GRAIN STORAGE	GREENHECK	SP-B90	CEILING	75	.25	3.0	50 WATT	700	DIRECT	120/1/60	10	14X12X8	*	CONTINUOUS	*
EF-2	GUEST TOILET	GREENHECK	CSP-A250	CEILING	200	.375	3.3	83 WATT	1000	DIRECT	120/1/60	23	14X12X12	*	LIGHT INTERLOCK	*
EF-3	BAR AREA	GREENHECK	CSP-A510	CEILING	500	.1	2.9	217 WATT	1070	DIRECT	120/1/60	36	18X15X15	*	OAHU-1 INTERLOCK	*

(*) APPROVED EQUAL MANUFACTURER: COOK, TWIN-CITY, ACME, PENN

ACCESSORIES NOTES:

- PROVIDE GRILLE COLOR PER ARCH. SPECS
- PROVIDE BACK DRAFT DAMPER
- PROVIDE FACTORY MOUNTED DISCONNECT SWITCH AND INTEGRAL THERMAL OVERLOAD PROTECTION, COORDINATE WITH ELECTRICAL CONTRACTOR PRIOR TO ANY PURCHASING.

GENERAL FAN NOTES:

- MOTOR STARTERS, DISCONNECTS (IF NOT FACTORY PROVIDED) AND ALL EQUIPMENT NORMAL POWER AND EMERGENCY POWER WIRING BY ELEC. CONTRACTOR
- ALL CONTINUOUS-DUTY MOTORS SHALL BE PROVIDED WITH OVERLOAD PROTECTION ACCORDING TO NATIONAL ELECTRICAL CODE PAR. 430-32.
- FIELD ADJUST OPENINGS WITH STRUCTURE.
- ALL OUTDOOR EQUIPMENT SHALL COMPLY WITH LOCAL ZONING NOISE ORDINANCE OR NOT EXCEED A NOISE LEVEL OF 65dB AS MEASURED RADIALLY 30 FT. FROM THE EQUIPMENT IN ALL DIRECTIONS.
- COORDINATE WITH ELECTRICAL CONTRACTOR BEFORE BIDDING OR ORDERING ANY EQUIPMENT.

SPLIT SYSTEM EQUIPMENT SCHEDULE

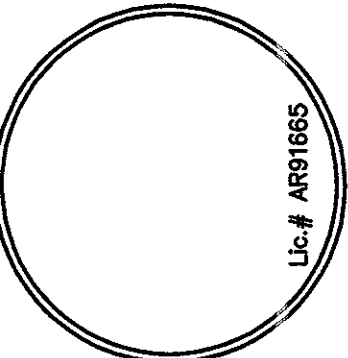
CONDENSING UNIT															
CU TAG	MANUFACTURER & MODEL	NOMINAL TONNAGE	CAP. STAGES	(S)EER/(PLV)	REFRIG./LBS	LIQ./SUCT.	NO. FANS	FAN FLA(EA)	NO. COMP.	COMP.RLA(EA)	VOLTAGE/PH	MCA/MOCP	WEIGHT (LBS)	L x W x H (IN)	NOTES
OACU-1	YORK YQD60S43S1	5	1	13	R-410A	3/8-7/8	1	1.5	1	17.9	208/3/60	23.9/40	210	34X34X32	1-5,10,15

AIR HANDLING UNIT																
AHU TAG	MANUFACTURER & MODEL	TOTAL MBH	SENSIBLE MBH	TOTAL CFM	O/A CFM	E.S.P.(\"WG)	ENT. DB/MB	LEAV. DB/MB	ROWS/FPH	FAN HP	HEATER KW	VOLTAGE/PH	MCA/MOCP	WEIGHT (LBS)	L x W x H (IN)	NOTES
OAHU-1	YORK AHP60D3XH21	66.34	33.05	850	850	.79	91/78	55.4/54.9	3/12	1	7.2	208/1/60	52.8/60	180	57X22X25	1,6,7,11-20

NOTES:

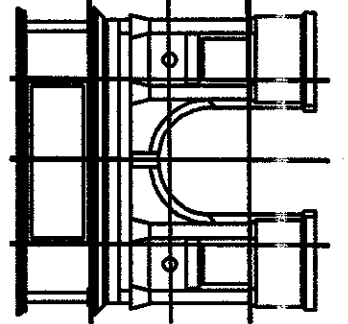
- UNITS RATED PER ARI 210, 240 AND 270, APPROVED EQUAL: AAO, CARRIER, LENNOX, TRANE
- PROVIDE WITH THERMAL EXPANSION VALVES, LIQUID LINE FILTER DRYER AND MULTI-USE SERVICE VALVES
- PROVIDE COMPRESSOR WITH CRANKCASE HEATER AND MIN. 5-YEAR WARRANTY
- PROVIDE HIGH AND LOW PRESSURE CONTROLS AND OVER TEMPERATURE PROTECTION.
- PROVIDE WEATHERPROOF ELECTRIC CONTROLS AND SINGLE SIDE SERVICE ACCESS
- PROVIDE SINGLE POINT POWER ENTRY AND HEAVY DUTY NICKEL-CHROMIUM ELEMENT HEATER
- PROVIDE 1" THROWAWAY, MIN. 30% EFF. FILTER AND VIBRATION ISOLATION FOR AHU
- PROVIDE RAWAL VALVE CONTROL
- PROVIDE FACTORY MOUNTED FUSIBLE DISCONNECT/STARTER FOR A.H.U., COORDINATE PRIOR TO PURCHASING
- PROVIDE ULTRA-DRY 2900 CONTROLLER WITH HUMIDITY SENSING MODULE.
- PROVIDE REFRIGERANT LINES SIZE AS RECOMMENDED BY MANUFACTURER, NOT TO EXCEED 75 FT. EQUIV. LENGTH FOR LONGER RUNS COORDINATE WITH MANUFACTURER PRIOR TO PURCHASE OR ANY WORK.
- ULTRA-DRY OPTION WITH MODULATING HOT GAS REHEAT.
- ULTRA-DRY COASTAL CORROSION PROTECTIVE COATING ON BOTH CONDENSER AND EVAPORATOR COIL.

COORDINATION NOTE:
MECHANICAL CONTRACTOR SHALL COORDINATE ALL ELECTRICAL REQUIREMENTS AND ACCESSORIES WITH ELECTRICAL CONTRACTOR PRIOR TO PURCHASING AND INSTALLATION AND SHALL BRING ANY DISCREPANCIES TO THE ATTENTION OF ENGINEER



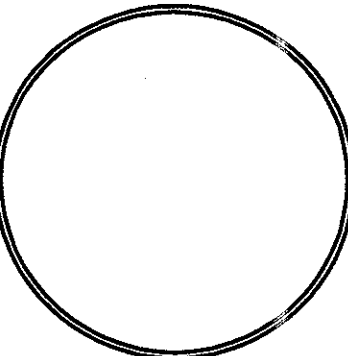
COPYRIGHT © 2010
ALL RIGHTS RESERVED
M.A. CORSON & ASSOCIATES, INC.
M.A. CORSON & ASSOCIATES, INC.
No part of this document may be reproduced, stored in a retrieval system, or transmitted, in any form or by any means, electronic, mechanical, photocopying, recording, or by any information storage and retrieval system, without the prior written consent of M.A. CORSON & ASSOCIATES, INC. Its use is strictly prohibited.

M.A. CORSON & ASSOCIATES, INC.
 ARCHITECTURE
 STRUCTURAL DESIGN
 844 East Ocean Blvd. Suite C Stuart, FL. 34994
 (772) 223-8227 - (Phone / Fax)
 Visit us on the web @ macorsonarchitect.com



A TENANT IMPROVEMENT PLAN FOR:
TEQUESTA BREWERY CO.
 287 & 289 S. US HIGHWAY 1
 TEQUESTA, FLORIDA

DATE: 1/8/10
 DRAWN BY: jg mc
 CHECKED: mc
 REVISIONS:



ISSUED FOR BID 04-07-10

KAMM CONSULTING PROJECT # 2010-0006
PROJECT MANAGER: BRAD BROWN

KAMM
 CONSULTING
 1408 Orange Avenue
 Fort Pierce, Florida 34950
 Phone 772.335.1744 Fax 772.395.1745
 www.kammconsulting.com
 Certified Professional Engineer
 State of Florida License # 61189

PRINCIPAL: _____
 Brady L. Brown Florida License #59232

