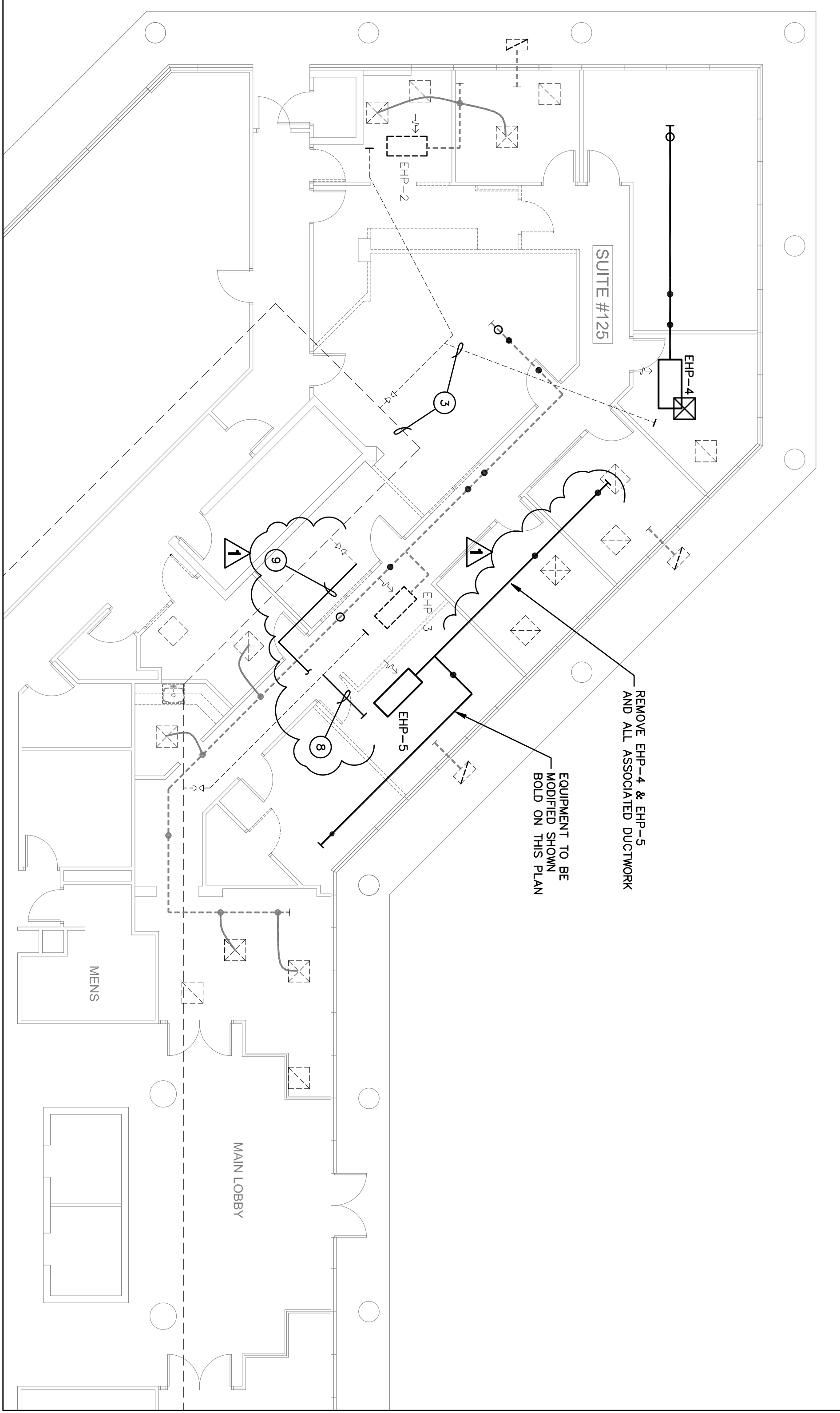


ABBREVIATIONS	
HP	HEAT PUMP
WSP	WATER SOURCE TYPE
EHP	EXISTING HEAT PUMP
S/A	SUPPLY AIR
R/A	RETURN AIR
O/A	OUTSIDE AIR
E/A	EXHAUST AIR
CFM	CUBIC FEET PER MINUTE
MVD	MANUAL VOLUME DAMPER (OPPOSED BLADE TYPE)
FD	FIRE DAMPER
AHU	AIR HANDLING UNIT
CD	CONDENSATE DRAIN
CWS	CONDENSER WATER SUPPLY
CWR	CONDENSER WATER RETURN

SYMBOL LEGEND	
	HEAT PUMP A/C UNIT AS NOTED
	EXISTING EQUIPMENT AS NOTED
	SUPPLY AIR DIFFUSER AS NOTED
	RETURN/TRANSFER GRILLE AS NOTED
	EXISTING SUPPLY AIR GRILLE
	EXISTING RETURN/TRANSFER GRILLE
	DUCTWORK AS NOTED
	EXISTING DUCTWORK TO REMAIN
	DUCT TRANSITION
	TYPE B FIRE DAMPER W/ACCESS DOOR
	MOTORIZED BACKDRAFT/VOLUME DAMPER, GREENHECK VDRS3
	MANUAL VOLUME DAMPER
	THERMOSTAT AS NOTED
	FLEXIBLE DUCT, UL CLASS 1
	CONNECTION TO EXISTING EQUIPMENT FOR FLEXIBLE DUCT
	DUCT SMOKE DETECTOR WITH AUDIBLE & VISUAL ALARMS



EXISTING HVAC FLOOR PLAN
1/8" = 1'-0"

HVAC CONTROLS NOTE

AIR CONDITIONING CONTRACTOR SHALL PROVIDE OR CAUSE TO BE PROVIDED ALL CONTROLS, CONTROL WIRING & CONDUIT, POWER WIRING & CONDUIT, AND ALL OTHER ITEMS NECESSARY FOR INSTALLATION AND CONTROL OF HEAT PUMP AIR CONDITIONING UNITS. IN ADDITION, CONTRACTOR SHALL PROVIDE INTERFACE CONTROLS FOR THE EXISTING SYSTEMS. THE EXISTING SYSTEMS SHALL BE CONTROLLED BY THE EXISTING STAFF/TAJON ENERGY MANAGEMENT SYSTEM (EMS). PROGRAMMING IS TO ALSO INCLUDE INTERFACE TO EXISTING PROGRAM DESIGNED TO CALCULATE TENANT OVERTIME USAGE OF THE AIR CONDITIONING SYSTEM. CONTRACT BUILDING CONTROLS SERVICE CONTRACTOR SHALL CONCEPTS AT 1-800-953-2803 FOR CONTROL SYSTEMS. THE EXISTING HEAT PUMP STARTER IS TO BE INTERLOCKED WITH THE EXISTING EMS CONTROL PANEL LOCATED IN THE CORRIDOR. (RELAY CONTACT)

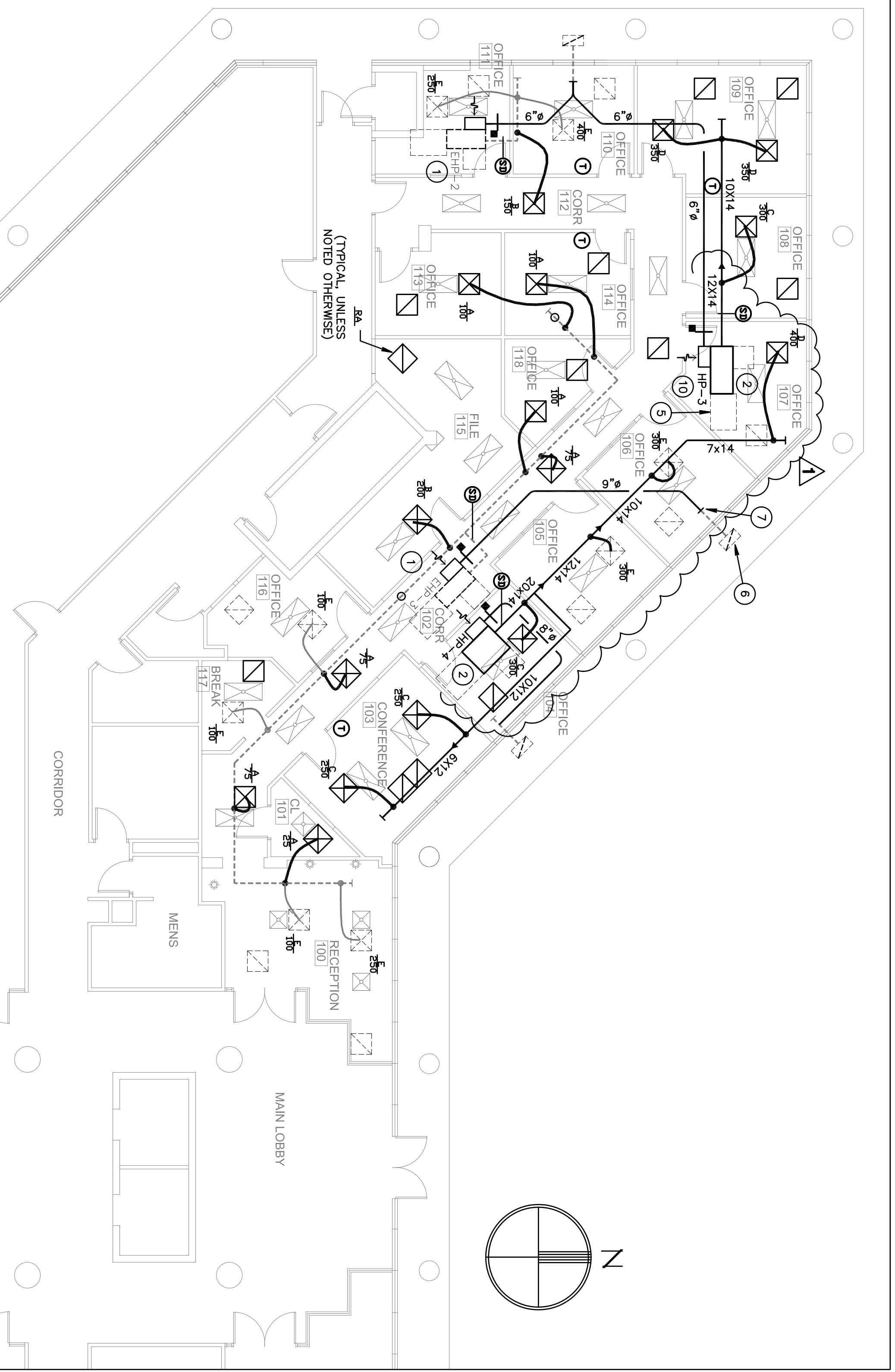
THERMOSTATS ARE TO BE WHITE-RODGERS PROGRAMMABLE TYPE, MODEL 1F96-344 VERIFY EXACT MODEL NUMBER WITH LANDLORD.

THE ABOVE NOTES APPLY TO ALL EQUIPMENT IN THE TENANT SPACE, INCLUDING EXISTING HEAT PUMPS.

THE CEILING SPACE THROUGHOUT THIS PROJECT IS A RETURN AIR PLENUM. NO COMBUSTIBLE OR TOXIC MATERIALS ARE ALLOWED ABOVE THE CEILING.

PLAN KEYNOTES:

- 1 EXISTING HEAT PUMP TO REMAIN.
- 2 EXISTING HEAT PUMP A/C UNIT REMOVED FROM SUITE 170 UNDER SEPARATE PERMIT (WASHINGTON LUKENS). RE-INSTALL AS INDICATED ON THESE PLANS.
- 3 CWS&R PIPING TO REMAIN (TYPICAL)
- 4 CONDENSATE DRAIN PIPING IS 3/4" MINIMUM, EXCEPT AS NOTED OTHERWISE
- 5 MAINTAIN 42" CLEAR SPACE ON ELECTRICAL ACCESS SIDE OF A/C UNITS (TYPICAL)
- 6 EXISTING OUTSIDE AIR GRILLE IN SPLIT, WITH 12X6 DUCT STUBBED TO INTERIOR. (TYPICAL)
- 7 PROVIDE SQUARE TO ROUND TRANSITION AS REQUIRED. (TYPICAL)
- 8 CWS&R PIPING TO BE REMOVED BACK TO LIVE PIPE SUPPLYING EHP-3.
- 9 PROVIDE NEW CWS&R PIPING FOR HP-4 FROM EXISTING SPACE TAPS AT MAIN GATE TO EXISTING PIPING AT THIS LOCATION.
- 10 CONNECT TO EXISTING CONDENSER WATER AND CONDENSATE PIPING AT THIS LOCATION. EXTEND EXISTING PIPING AS REQUIRED.



PROPOSED HVAC FLOOR PLAN
1/8" = 1'-0"

Gilman & Associates, Inc.
MECHANICAL & ELECTRICAL ENGINEERS
807 NORTH LAKEVIEW DRIVE
Lake Worth, FL 33460 C.A.#009078
(561) 582-0210 Fax (561) 582-8212
RONALD D. GILMAN P.E. #37933

birse design inc.
5300 woodland lakes drive
palm beach gardens, fl 33418
phone 561-249-4001
fax 772-409-8684
AA26001615

BD

WAGNER LAW GROUP
FAIRWAY OFFICE CENTER
7108 FAIRWAY DR #125
PALM BEACH GARDENS, FL
PROJECT NUMBER 710829

REVISIONS
4-17-12 GEN. REV.
3
2
1
DRAWN BY GD
CD
3/23/12

M-1