

REPLACEMENT SPLIT SYSTEM UNIT SCHEDULE

GENERAL				AIR HANDLER				CONDENSING UNIT				SYSTEM DATA													
NO.	LOCATION SERVED	WFG	MARK	MODEL	CU	ESP	FLA	HEATER	WV	VOLTS	MCA	MOP	CU	1	4	TR	BO	1	1	3.0	33.9	24.0	13.0	1.2	
1	Location Served	None	AHU 1	41C338B	1,100	100	0.40	5.3	BAYMTH408	7.88	240/1	43.00	46	CU 1	41R3008B1	240/1	18.0	30	1	3.0	33.9	24.0	13.0	1.2	

- HORIZONTAL DISCHARGE AIR HANDLER. PROVIDE WITH TX VALVE, FACTORY MOUNTED ELECTRIC HEATER WITH SINGLE POINT POWER CONNECTION. PROVIDE TIME DELAY RELAY, SHAW HEATER AND START ASSIST CAPACITOR FOR CONDENSING UNITS. REFERENTARY LINE SIZES PER MANUFACTURER'S RECOMMENDATIONS BASED ON ACTUAL ROOM LENGTH. PROVIDE WITH 2" FLAT FILTER INSTALLED IN UNIT.
- PROVIDE WITH MOTORIZED DAMPER IN THE OUTSIDE AIR SUPPLY DUCT THAT IS INTERLOCKED TO OPEN WITH THE SYSTEM FAN IS IN OPERATION. THE SYSTEM FAN IS TO OPERATE CONTINUOUSLY DURING HOURS OF BUILDING OCCUPANCY.

AIR DEVICE SCHEDULE

MARK	MANUFACTURER	MODEL	NECK SIZE	CU RANGE	REMARKS
A	TISS	200A-3-26-A075	8" x 4"	0 - 255	1, 2, 3, 4
B	TISS	250-A-A	8" x 4"	0 - 50	1, 2, 3
M	TISS	50F-1-26-A	22 X 22	0 - 1000	1, 3

REMARKS  
 1. WHITE FINISH, ALUMINUM CONSTRUCTION  
 2. OPPOSED BLADE VOLUME DAMPER  
 3. TILE LAY IN DEFUSER  
 4. FLEXIBLE DUCT RUN-OUT SIZE TO MATCH DIFFUSER NECK SIZE

NOTES AND SPECIFICATIONS

- THE MECHANICAL CONTRACTOR SHALL COMPLY WITH THE FLORIDA BUILDING CODES, THE STATE OF FLORIDA ENERGY CODE, AND ALL LOCAL CODES AS MAY BE APPLICABLE.
- MECHANICAL PLANS ARE DIMENSIONED ONLY. THEY ARE INTENDED TO INDICATE CAPACITY, SIZE, LOCATION, DIRECTION, AND GENERAL INDICATED MUST NOT BE TAKEN TO MEAN THAT OTHER SIMILAR OR DIFFERENT FEATURES WILL NOT BE REQUIRED. ALL RISERS AND DROPS IN PIPING AND DAMPERS NOT NECESSARILY SHOWN.
- WORK SHALL INCLUDE ALL LABOR, MATERIALS, FINISHES AND OTHER COSTS AS ARE NECESSARY FOR THE INSTALLATION OF A COMPLETE AND Satisfactory OPERATIONAL AIR CONDITIONING SYSTEM.
- THIS CONTRACTOR SHALL COORDINATE WITH THE OTHER CONTRACTORS TO INSURE THAT EACH TRADE SHALL HAVE SUFFICIENT SPACE TO INSTALL THEIR EQUIPMENT (DUCTWORK, PIPING, ELECTRICAL, ETC.).
- VERIFY ALL DIMENSIONS FROM ARCHITECTURAL PLANS OR FIELD DIMENSIONS.
- UNLESS NOTED, ALL MATERIALS SHALL BE NEW, COMPLETE, INCLUDE MANUFACTURER'S WARRANTY, AND BE U.L. APPROVED IF APPLICABLE. ALL WORK SHALL PRESENT A NEAT MECHANICAL APPEARANCE WHEN COMPLETED.
- CONTRACTOR SHALL FINISH AND INSTALL COILS AND BASIS FOR ALL EQUIPMENT AS SHOWN ON PLANS. THIS CONTRACTOR SHALL COMPLY WITH ALL CODES AND REQUIREMENTS AND THEIR SIZES.
- PROVIDE INSULATION FOR REFERENTARY LINES, SUCH AS TO RAISE EX. WEATHER-EXPOSED INSULATION TO BE PROVIDED WITH WEATHER PROOF COATING AS RECOMMENDED BY MANUFACTURER. EXPOSED CONDENSATE LINES THOSE CONCEALED IN WALLS AND CEILINGS TO BE PROVIDED WITH SAME TYPE OF INSULATION.
- EQUIPMENT AS PER SCHEDULED LIST OF ACCEPTABLE MANUFACTURERS:  
 A/C EQUIPMENT: TRANE, CARBER, MAON, AODSON  
 A/C GRILLES: METALFARE, TITUS, READER, PRICE  
 FANS: FERN, GREENHECK, COOK, NITROE, BROWN
- ALL EQUIPMENT SHALL BE SPACED, TESTED, ADJUSTED AND BALANCED FOR AIR DELIVERY AS INDICATED ON THE PLANS AND PLACED IN ACCORDANCE WITH THE FLORIDA BUILDING CODES. THE CONTRACTOR SHALL BE RESPONSIBLE FOR THE BALANCING OF SYSTEMS OF SIMILAR SIZE AND TYPE. THIS CONTRACTOR SHALL GUARANTEE ALL WORKMANSHIP, MATERIALS AND EQUIPMENT TO BE FREE OF DEFECTS FOR A PERIOD OF ONE YEAR FROM DATE OF OCCUPANCY. THIS IS IN ADDITION TO ANY WARRANTY OR GUARANTEE FROM THE EQUIPMENT MANUFACTURER. FURNISH THE OWNER WITH THE MANUFACTURER'S WRITTEN WARRANTIES CERTIFICATES.
- ALL EQUIPMENT SHALL BE PROPERLY SUPPORTED AND ISOLATED TO PREVENT VIBRATION TRANSMISSION. ALL AIR HANDLING UNITS SHALL BE SUPPORTED ON VIBRATION ISOLATORS. ALL AIR HANDLING UNITS SHALL BE CAPABLE OF OPERATING AT 5 NOMINAL TONS IN SIZE.
- PROVIDE SPRING ISOLATORS FOR ALL TRUSS MOUNTED EXHAUST FANS.
- ALL PIPING AND DUCTWORK SHALL BE INSTALLED TO PROVIDE ADEQUATE CLEARANCE FOR ACCESS TO ALL EQUIPMENT. CONTRACTOR SHALL DISPOSE TRAP BY TRANSDUSSION OF THIS SPACE BY MEANS OF OTHER CONSTRUCTION.
- ALL CONTROL WIRING SHALL BE IN CONDUIT. WIRE WHERE CONTROL WIRING IS CONCEALED BY CEILING STRUCTURE, WIRING MAY BE PLACED IN FIBER OPTIC CONDUIT. ALL CONTROL WIRING SHALL BE SECURELY ATTACHED TO THE STRUCTURE BY A MINIMUM STRAP OF EVERY FOUR FEET.
- DUCT DIMENSIONS SHOWN ON DRAWINGS ARE CLEAR INSIDE DIMENSIONS. IN GENERAL, ALL PIPING AND DUCTWORK SHALL BE RIGID. FLEXIBLE DUCTWORK SHALL BE LIMITED TO A MAXIMUM OF 10 FEET PER SECTION. FLEXIBLE DUCTWORK SHALL BE DISCONTINUED WITH OTHER TRADES. DO NOT INSTALL ANY DUCTWORK OR PIPING OF ANY KIND ABOVE ELECTRICAL PANEL.
- ALL DUCTWORK, INSTALLATION AND EQUIPMENT SHALL MEET THE LATEST ADOPTED EDITION OF THE STATE OF FLORIDA ENERGY CODE.
- ALL DUCTWORK SHALL BE FABRICATED FROM RIGID FIBERGLASS DUCTBOARD WITH ANTIMICROBIAL COATING AND 1-1/2" R-6 INSULATION IN ACCORDANCE WITH SMACNA THERMOCLAS DUCTBOARD WITH ANTIMICROBIAL COATING AND 1-1/2" R-6 INSULATION.
- FLEXIBLE DUCTWORK, WHERE SHOWN ON THE DRAWINGS, SHALL BE EQUAL TO FLEXAIR WITH WIRE HELIX FRAME, POLYESTER LINER, HIGH RESISTANCE FIBERGLASS INSULATION AND METALLIZED REINFORCED FIBERGLASS BARRIER EXTERIOR COATING. SPRING HANGERS WITH BELLS SHALL BE PROPERLY SUPPORTED WITH GALVANIZED STEEL STRIPS 2" WIDE AND SHALL BE RUN AS STRAIGHT AS POSSIBLE WITH NO BENDS OR BENDS TO RESTRICT AIRFLOW.
- OUTSIDE AIR AND TOILET EXHAUST DUCTWORK SHALL BE METAL. FOR OUTSIDE AIR CONDITIONING UNIT, PROVIDE EXTERNALLY INSULATED SHEET METAL WITH FOAM BACKING WITH A MINIMUM OF R-6 INSULATION. DUCT TOILET EXHAUST TO ROOF, SPLITLY, OR WALL CAPS AS SHOWN ON PLANS. CAPS SHALL BE ALUMINUM CONSTRUCTION WITH BRG AND INSECT SCREENS.
- HVAC SUPPLY DEFUSERS AND RETURN GRILLES SHALL BE TITUS WITH WHITE FINISH, ALUMINUM CONSTRUCTION. SEE PLANS FOR THROAT CONNECTION SIZES.
- THERMOSTATS SHALL BE 7 DAY PROGRAMMABLE WITH LCD, REWIND FOR ONE OR TWO STAGES BASED ON STAGES OF COOLING FOR UNIT BEING SERVED. EQUAL TO WHITE-ROVERS MODEL 795-1291 WALL MOUNTED THERMOSTATS SHALL BE INSTALLED 4'-0" ABOVE FINISHED FLOOR OVERSHE OTHERS. PROVIDE:
- THESE CONTROL DOCUMENTS REPRESENT A PORTION OF A COMPLETE DESIGN WHICH, TO THE BEST OF OUR KNOWLEDGE, HAVE BEEN PREPARED BY US OR UNDER OUR CLOSE PERSONAL SUPERVISION AND TO THE BEST OF OUR KNOWLEDGE, THEY COMPLY WITH ALL CITY, STATE AND FEDERAL REQUIREMENTS AND ALL APPLICABLE CODES. WE HEREBY CERTIFY THAT WE ARE A LICENSED PROFESSIONAL ENGINEER OF RECORD IS PROHIBITED. ALTERATIONS TO THE DESIGN AS SHOWN ON THESE PLANS ARE ONLY ALLOWED BY WRITTEN AUTHORIZATION OF THE ENGINEER OF RECORD.
- H.V.A.C. CONTRACTOR SHALL PROVIDE ONE SET OF COPIES OF ALL SELECTED EQUIPMENT TO ELECTRICAL CONTRACTOR TO ADJUST CIRCUIT REQUIREMENTS (IF REQUIRED) BASED ON ACTUAL SELECTED MANUFACTURER'S DATA.
- CONTRACTOR SHALL COORDINATE WORK WITH OTHER TRADES. REFERENCE ENTIRE SET OF CONSTRUCTION DOCUMENTS IN INSTALLATION OF MECHANICAL SYSTEMS INCLUDING ARCHITECTURAL, STRUCTURAL, ELECTRICAL, PLUMBING AND FIRE ASSEMBLIES.
- THESE PLANS MAKE REFERENCE TO EXISTING CONDITIONS. CONTRACTOR SHALL VISIT SITE WITH RESPECT TO PROPOSED CONSTRUCTION PRIOR TO BID. NOTIFY ENGINEER OF ANY DISCREPANCIES.
- PROVIDE 1 HOUR FIRE DAMPER AT ALL PENETRATIONS THROUGH RATED WALL ASSEMBLIES.

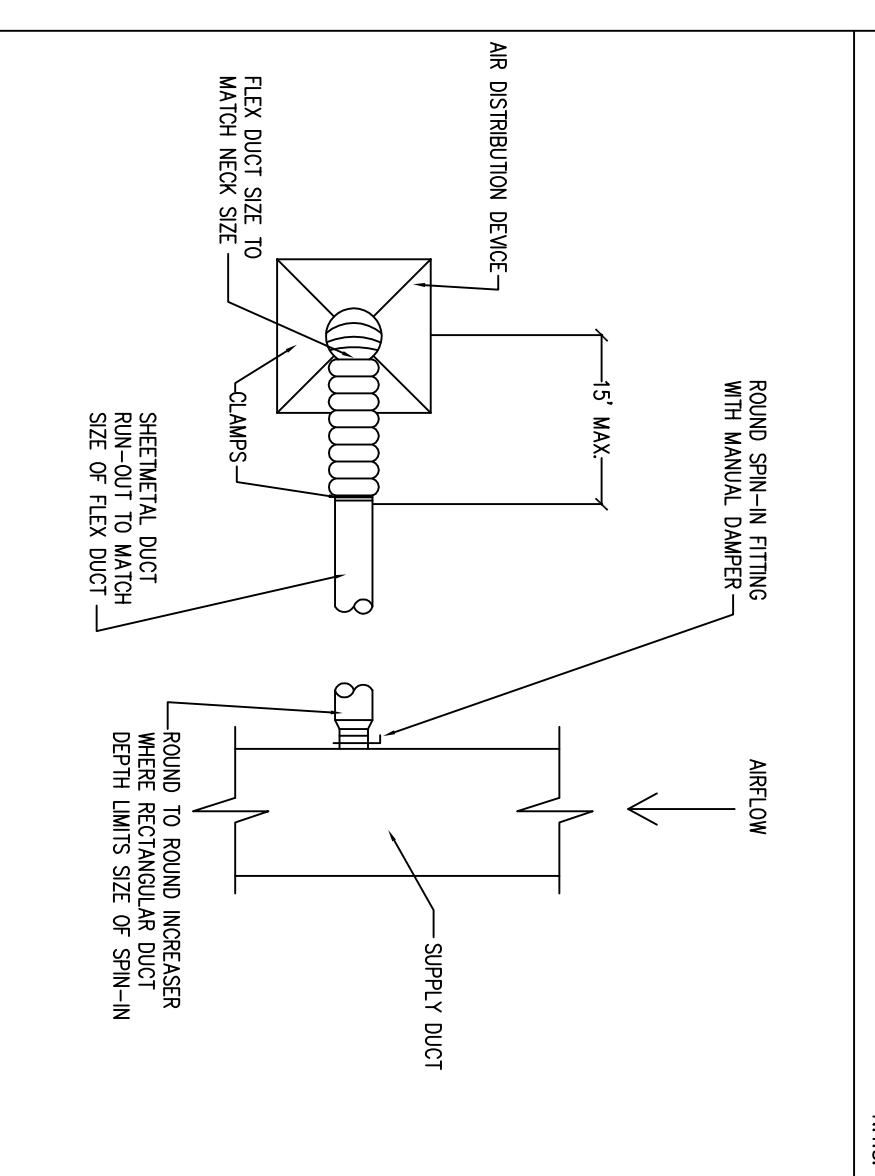
HVAC SYMBOLS

DESCRIPTION	SYMBOLS
DIFFUSER TAG DEFUSER TAG OR	
HUMIDISTAT	
THERMOSTAT	
EXHAUST FAN	
SURFACE MOUNTED DEFUSER	
WALL MOUNTED DEFUSER, SHALE OR LOUVER	
LINEAR SLOT OR BAR GRILLE	
SPRIN-IN-SADDLE TAP FITTING NO DAMPER	
SPRIN-IN-SADDLE TAP FITTING W/ BALANCING DAMPER REFR. LINES	
REVISION #	
KEYNOTE NUMBER	
HORIZONTAL DUCT	
SUPPLY DUCT TURNING UP	
RETURN DUCT TURNING UP	
DUCT TRANSITION	
RECTANGULAR ELBOW WITH TURNING VANES	
RECTANGULAR TEE WITH TURNING VANES	
DUCT SMOKE DETECTOR	
VOLUME DAMPER	
FIRE DAMPER	
DUCT MOUNTED TEMPERATURE SENSOR	
FLEXIBLE DUCT	
CEILING RADIATION DAMPER	
MOTORIZED VOLUME DAMPER	

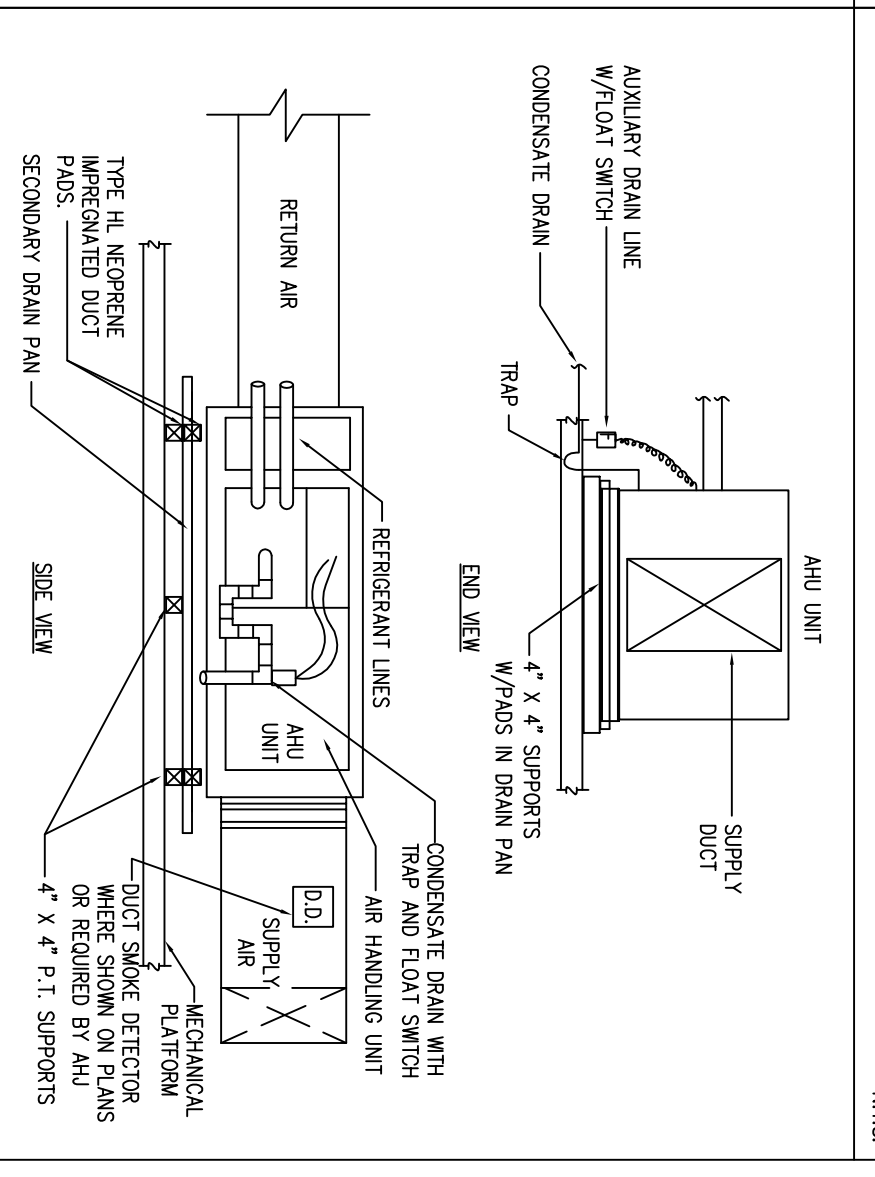
ABBREVIATIONS

DIAMETER	DESCRIPTION
A/C	AIR CONDITIONING
AS	ASBESTOS REMOVAL
ASB	ASBESTOS ABANDONMENT
AHU	AIR HANDLING UNIT
AS	AMERICAN SOCIETY OF HEATING, REFRIGERATING, AND AIR CONDITIONING ENGINEERS
CD	CONDENSATE DRAIN
CFM	CUBIC FEET PER MINUTE
CU	CONDENSING UNIT
DWG	DRAWING
ESP	EXTERNAL STATIC PRESSURE
EWH	EXHAUST VENTILATING AND AIR CONDITIONING
HVAC	HEATING, VENTILATING AND AIR CONDITIONING
MAN	MANUFACTURER
MECH	MECHANICAL
MNU	MANUAL
REC'D	RECORDED
SECO	SOUTHERN BUILDING CODE CONGRESS INTERNATIONAL
STAN	STANDARD
UL	UNDERWRITERS LABORATORY
W/O	WITH

DIFFUSER CONNECTION DETAIL (ROUND NECK) N.I.S.

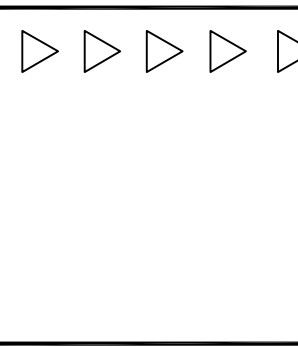


TYPICAL HORIZONTAL AIR HANDLING UNIT N.I.S.



SET NO.

REVISIONS



**MSA MOORE & SPENCE ARCHITECTS, P.A.**  
 12613 NEW BRITTANY BLVD.  
 FORT MYERS, FLORIDA 33907  
 (239) 278-3520 FAX (239) 278-3519  
 AA #0003069

MARK A. BRANT, P.E.

AN OFFICE RENOVATION DESIGN FOR:  
**AMERICAN RENAL ASSOCIATES**  
 AT GOLDTREE KIDNEY CENTER  
 PORT ST. LUCIE, FLORIDA  
 MECHANICAL SCHEDULES, NOTES AND DETAILS

JOB No. **08044**  
 03/19/10

SHEET No. **M1**  
 8 OF 18

**Mark A. Brant P.E.**  
 Consulting Engineer  
 1920 Medical Lane, St. 118  
 Fort Myers, FL 33908  
 Phone: (239) 939-0898  
 Fax: (239) 939-9038

