

**HVAC CONTROLS NOTE**

AIR CONDITIONING CONTRACTOR SHALL PROVIDE OR CAUSE TO BE PROVIDED ALL CONTROLS, CONTROL WIRING & CONDUIT, POWER WIRING & CONDUIT, AND ALL OTHER ITEMS NECESSARY FOR INSTALLATION AND CONTROL OF HEAT PUMP AIR CONDITIONING UNITS. IN ADDITION, CONTRACTOR SHALL PROVIDE INTERFACIAL LAYOUT WITH ON SCREEN DISPLAYS THAT ARE CONTROLLED BY THE EXISTING ENERGY MANAGEMENT SYSTEM (EMS). PROGRAMMING IS TO ALSO INCLUDE INTERFACE TO EXISTING PROGRAM DESIGNED TO CALCULATE TENANT OVERTIME USAGE OF THE AIR CONDITIONING SYSTEM. CONTRACT BUILDING CONTROLS SERVICE CONTRACTOR (PRE-NOVA AT 954-916-9930 (ROK SALAZAR) FOR ALL CONTRACTORS) AND DETAILS. A COMPLETE AND OPERATIONAL CONTROL SYSTEM IS TO BE PROVIDED.

THERMOSTATS ARE TO BE WHITE-RODGERS, MODEL 1F96-344 SINGLE STAGE NON-PROGRAMMABLE TYPE.

THE ABOVE NOTES APPLY TO ALL EQUIPMENT IN THE TENANT SPACES, INCLUDING EXISTING HEAT PUMPS.

**ALTERNATE PRICING:**

PROVIDE ADD ALTERNATE PRICE TO REPLACE EXISTING HEAT PUMP UNIT EHP-2 WITH NEW UNIT HP-2 PER SCHEDULE SHOWN ON SHEET M-2.

PROVIDE ADD ALTERNATE PRICE TO REPLACE EXISTING HEAT PUMP UNIT EHP-3 WITH NEW UNIT HP-3 PER SCHEDULE SHOWN ON SHEET M-2.

NEW EQUIPMENT IS TO BE INSTALLED PER THESE PLANS AND DETAILS.

- PLAN KEYNOTES:**
- 1 EXTEND EXISTING COPPER CWS&R PIPING IN THIS AREA TO HEAT PUMP A/C UNIT AS REQUIRED. PROVIDE NEW SUMP CONDENSATE DRAIN CONNECTION, AND CONDENSATE PUMP AS REQUIRED. (TYPICAL)
  - 2 PROVIDE SQUARE TO ROUND SHEMETAL TRANSITION FROM EXISTING DUCT AS REQUIRED. FIELD VERIFY EXACT SIZES AND CONDITIONS (TYPICAL)
  - 3 PROVIDE FLATTENED DUCT TRANSITION UNDER BEAM IN THIS AREA AS REQUIRED. FIELD VERIFY.
  - 4 PROVIDE DUCT SPLIT WITH TURNING VANES.
  - 5 EXISTING A/C UNIT TO BE RE-INSTALLED PER THESE PLANS AND DETAILS.
  - 6 PROVIDE ANY REQUIRED MAINTENANCE, CLEAN UNIT INSIDE AND OUT, INCLUDING ALL SURFACES, THE COILS AND ALL OTHER COMMENTS USING A VACUUM AND APPROPRIATE CLEANING AGENTS AND DISINFECTANTS TO REMOVE ANY BCU CONTAMINANTS AND REPLACE ANY AND WATER PROVIDE NEW FILTERS, BALANCE AIR AND WATER QUANTITIES AND VERIFY PROPER OPERATION.

**ABBREVIATIONS**

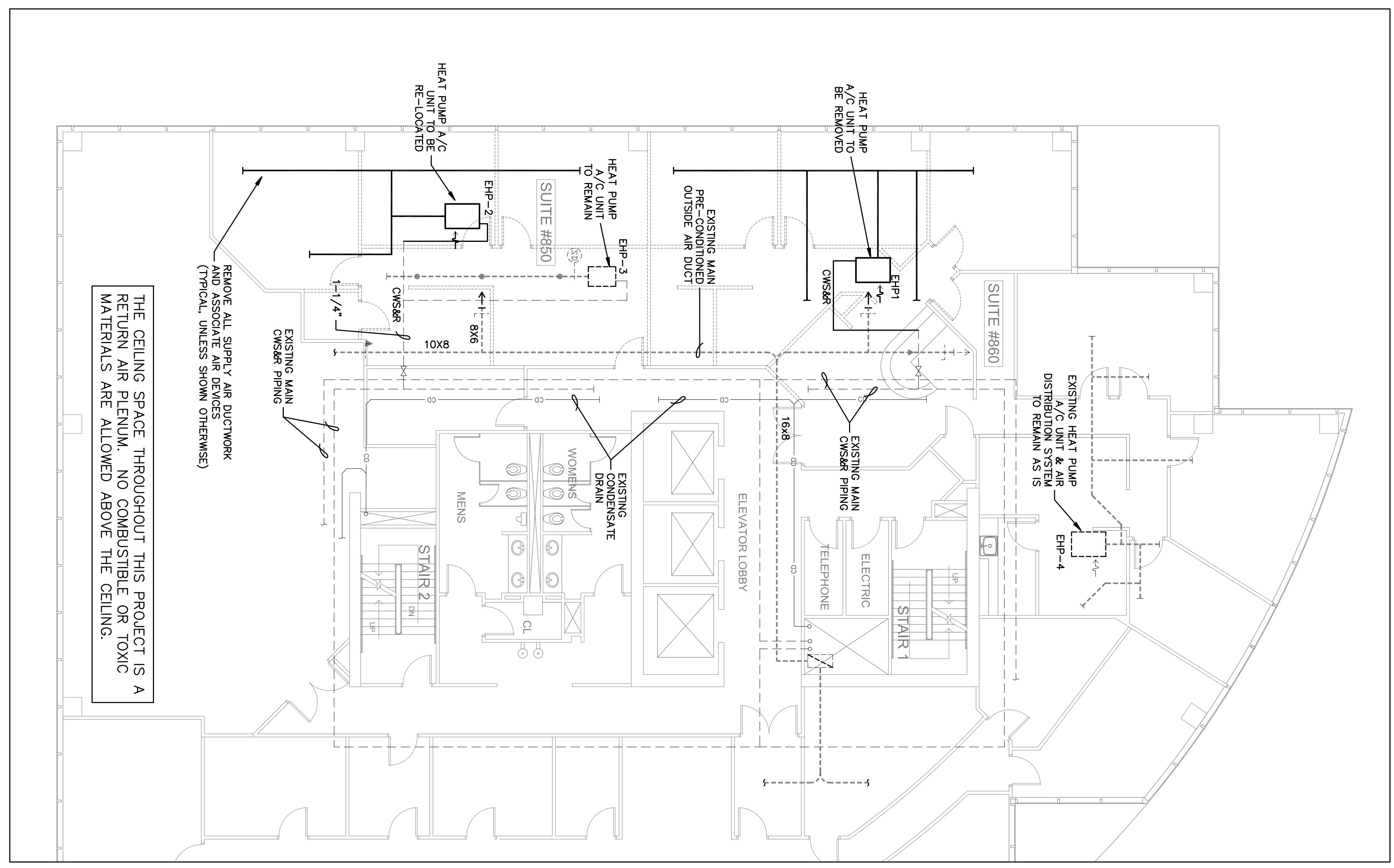
HP	HEAT PUMP
W	WATER SOURCE TYPE
EHP	EXISTING HEAT PUMP
S/A	SUPPLY AIR
R/A	RETURN AIR
O/A	OUTSIDE AIR
E/A	EXHAUST AIR
CFM	CUBIC FEET PER MINUTE
MVD	MANUAL VOLUME DAMPER (OPPOSED BLADE TYPE)
FD	FIRE DAMPER
CD	CONDENSATE DRAIN
CWS	CONDENSER WATER SUPPLY
CWR	CONDENSER WATER RETURN

**SYMBOL LEGEND**

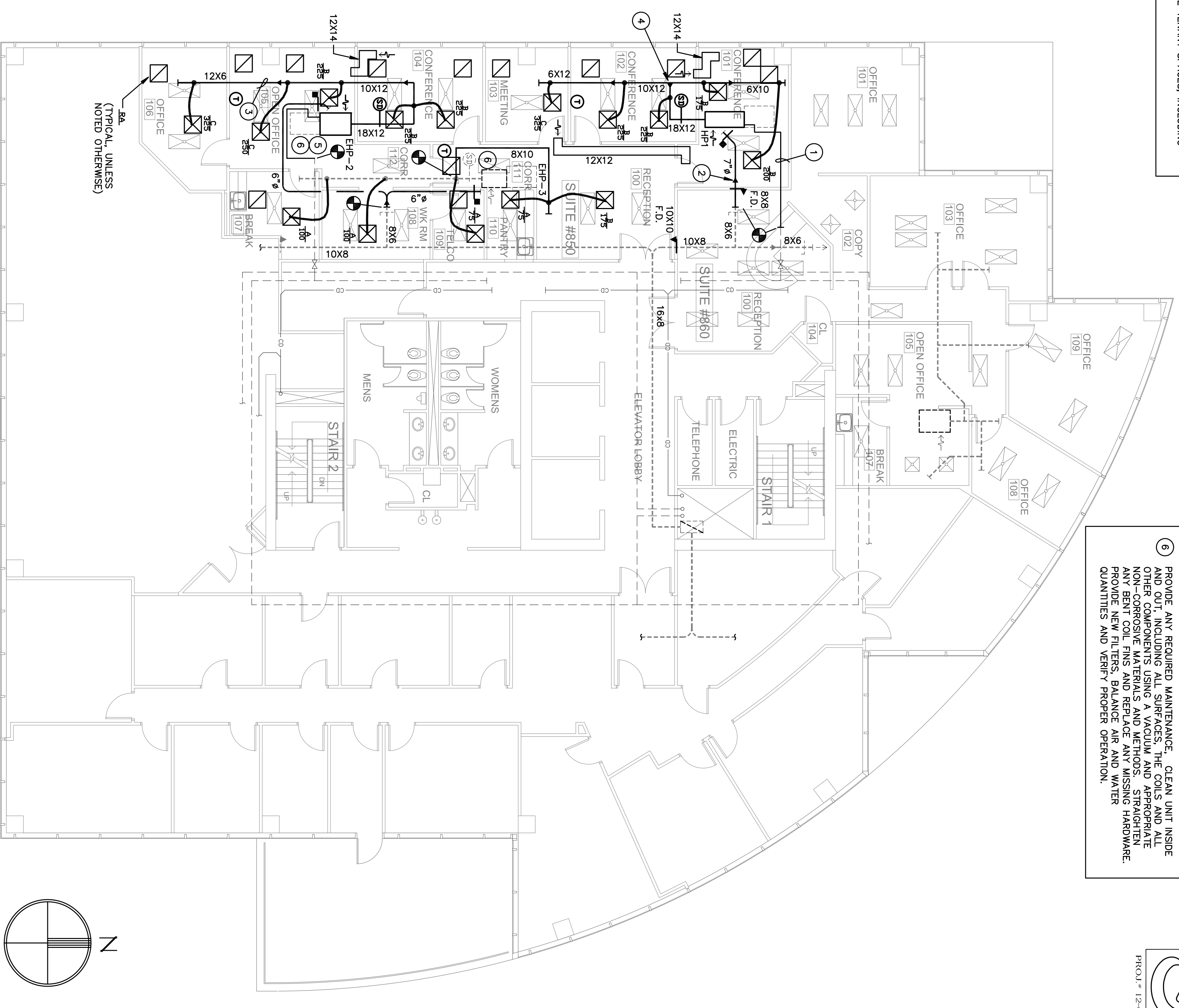
	HEAT PUMP A/C UNIT AS NOTED
	EXISTING EQUIPMENT AS NOTED
	SUPPLY AIR DIFFUSER AS NOTED
	RETURN/TRANSFER GRILLE AS NOTED
	DUCTWORK AS NOTED
	EXISTING DUCTWORK TO REMAIN
	DUCT TRANSITION
	TYPE B FIRE DAMPER W/ACCESS DOOR
	MOTORIZED BACKDRIFT/VOLUME DAMPER, GREENHECK VDR53
	MANUAL VOLUME DAMPER
	THERMOSTAT AS NOTED
	FLEXIBLE DUCT, UL CLASS 1
	CONNECTION TO EXISTING EQUIPMENT
	TAKE-OFF WITH VOLUME DAMPER FOR FLEXIBLE DUCT
	DUCT SMOKE DETECTOR WITH AUDIBLE & VISUAL ALARMS

THE CEILING SPACE THROUGHOUT THIS PROJECT IS A RETURN AIR PLENUM. NO COMBUSTIBLE OR TOXIC MATERIALS ARE ALLOWED ABOVE THE CEILING.

REMOVE ALL SUPPLY AIR DUCTWORK AND ASSOCIATE AIR DEVICES (TYPICAL, UNLESS SHOWN OTHERWISE)



EXISTING HVAC FLOOR PLAN  
1/8" = 1'-0"



PROPOSED HVAC FLOOR PLAN  
1/8" = 1'-0"

**Gilman & Associates, Inc.**  
MECHANICAL & ELECTRICAL ENGINEERS  
807 NORTH LAKEVIEW DRIVE  
Lake Worth, FL 33460 CA.\*090978  
(561) 582-0210 Fax (561) 582-8212  
RONALD D. GILMAN P.E. \*37933

**birse design inc.**  
5300 woodland lakes drive  
palm beach gardens, FL 33418  
phone 561-249-4001  
fax 772-409-8684  
AA26001615

**BD**

**VERITEXT**  
1400 CENTREPARK  
1400 CENTREPARK DR #850  
WEST PALM BEACH, FL  
PROJECT NUMBER CP32

**REVISIONS**

1	
2	
3	
4	
5	

DRAWN BY GD  
CD  
7/27/12

**M-1**