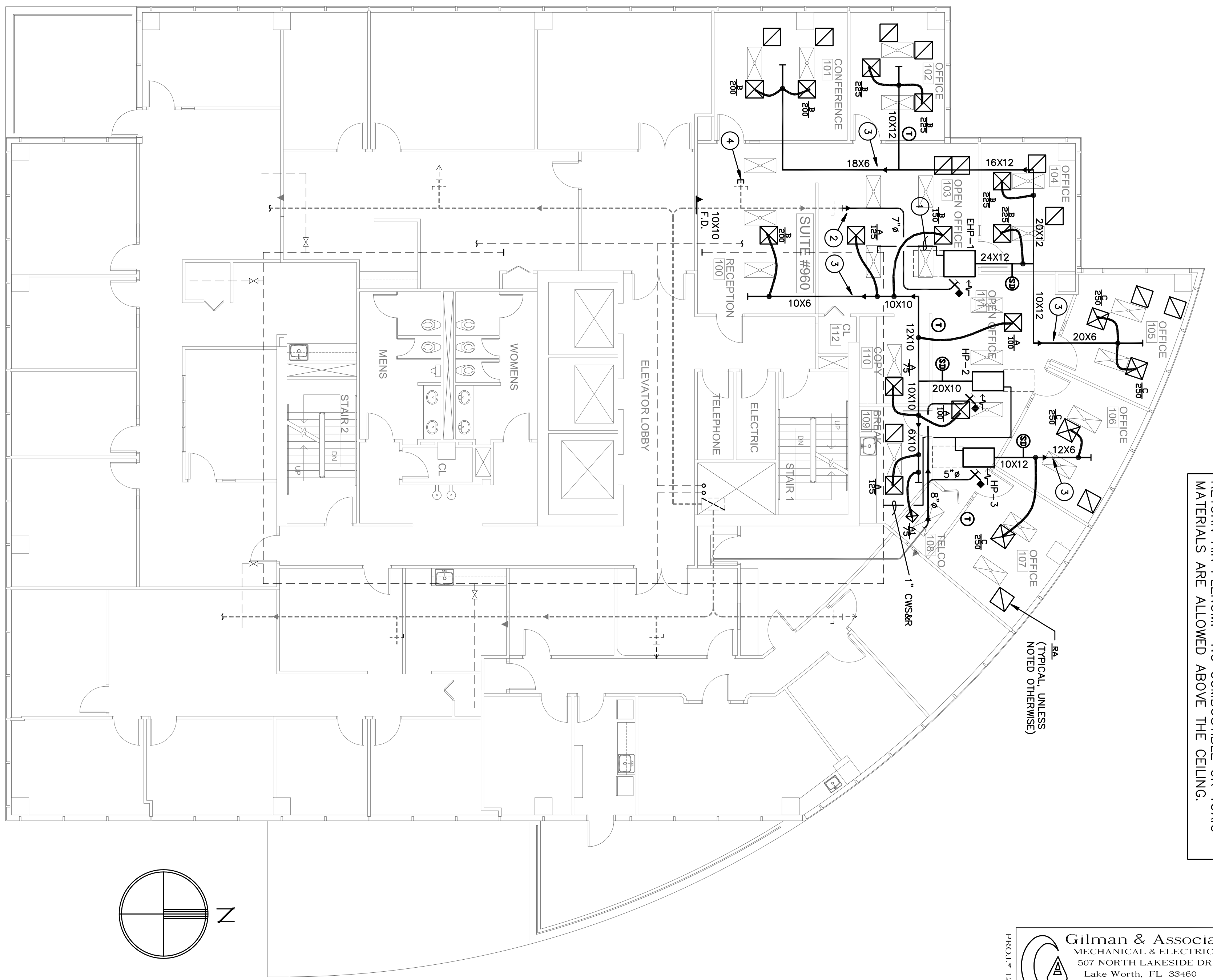


EXISTING HVAC FLOOR PLAN
1/8" = 1'-0"

ABBREVIATIONS	
HP	HEAT PUMP
WSP	WATER SOURCE TYPE
EHP	EXISTING HEAT PUMP
S/A	SUPPLY AIR
R/A	RETURN AIR
O/A	OUTSIDE AIR
E/A	EXHAUST AIR
CFM	CUBIC FEET PER MINUTE
MVD	MANUAL VOLUME DAMPER (OPPOSED BLADE TYPE)
FD	FIRE DAMPER
CD	CONDENSATE DRAIN
CWS	CONDENSER WATER SUPPLY
CWR	CONDENSER WATER RETURN

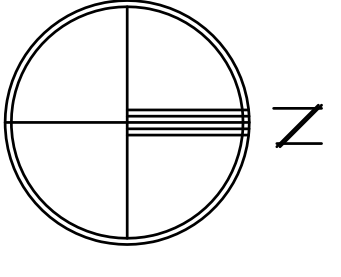
SYMBOL LEGEND	
[Symbol]	HEAT PUMP A/C UNIT AS NOTED
[Symbol]	EXISTING EQUIPMENT AS NOTED
[Symbol]	SUPPLY AIR DIFFUSER AS NOTED
[Symbol]	RETURN/TRANSFER GRILLE AS NOTED
[Symbol]	EXISTING SUPPLY AIR GRILLE
[Symbol]	EXISTING RETURN/TRANSFER GRILLE
[Symbol]	DUCTWORK AS NOTED
[Symbol]	EXISTING DUCTWORK TO REMAIN
[Symbol]	DUCT TRANSITION
[Symbol]	TYPE B FIRE DAMPER W/ACCESS DOOR
[Symbol]	MOTORIZED BACKDRIFT/VOLUME DAMPER, GREENHECK VCDR53
[Symbol]	MANUAL VOLUME DAMPER
[Symbol]	THERMOSTAT AS NOTED
[Symbol]	FLEXIBLE DUCT, UL, CLASS 1
[Symbol]	CONNECTION TO EXISTING EQUIPMENT FOR FLEXIBLE DUCT
[Symbol]	DUCT SMOKE DETECTOR WITH AUDIBLE & VISUAL ALARMS

- PLAN KEYNOTES:**
- 1 PROVIDE CONNECTION TO EXISTING MAIN CWS&R PIPING AS REQUIRED. 3/4" CONNECTION TO MAIN CONDENSATE DRAIN AND CONDENSATE PUMP AS REQUIRED. (TYPICAL)
 - 2 PROVIDE SQUARE TO ROUND SHEETMETAL TRANSITION FROM EXISTING DUCT AS REQUIRED. FIELD VERIFY EXACT SIZES AND CONDITIONS. (TYPICAL)
 - 3 PROVIDE FLATTENED DUCT TRANSITION UNDER BEAM IN THIS AREA AS REQUIRED. FIELD VERIFY.
 - 4 CAP, SEAL AND INSULATE UNUSED OUTSIDE AIR DUCT.



PROPOSED HVAC FLOOR PLAN
1/8" = 1'-0"

THE CEILING SPACE THROUGHOUT THIS PROJECT IS A RETURN AIR PLENUM. NO COMBUSTIBLE OR TOXIC MATERIALS ARE ALLOWED ABOVE THE CEILING.



Gilman & Associates, Inc.
MECHANICAL & ELECTRICAL ENGINEERS
807 NORTH LAKESIDE DRIVE
Lake Worth, FL 33460 CA.#009078
(561) 582-0210 Fax (561) 582-8212
RONALD D. GILMAN P.E. #37933

birse design inc.
5300 woodland lakes drive
palm beach gardens, FL 33418
phone 561-249-4001
fax 772-409-8684
AA26001615

BD

SPEC SUITE #960
1400 CENTREPARK
1400 CENTREPARK DR
WEST PALM BEACH, FL
PROJECT NUMBER CP38

REVISIONS
1 _____
2 _____
3 _____
4 _____
5 _____

DRAWN BY GD
CD
9/17/12

M-1