



WEST
ARCHITECTURE
+ DESIGN, LLC
AA26001503

318 SOUTH DIXIE HIGHWAY
SUITE 4-5
LAKE WORTH, FL. 33460
561-588-2027 T
561-582-9419 F
www.west-arch.com

COPYRIGHT NOTICE 2010.
ALL IDEAS, DESIGNS, ARRANGEMENTS AND PLANS
INDICATED OR REPRESENTED BY THIS DRAWING
ARE THE PROPERTY OF THIS OFFICE AND WERE
CREATED, EVOLVED AND DEVELOPED FOR USE ON
AND IN CONNECTION WITH THE SPECIFIED PROJECT.
NONE OF THE IDEAS, DESIGNS, ARRANGEMENTS OR
PLANS SHALL BE USED BY OR DISCLOSED TO ANY
PERSONS, FIRM OR CORPORATION FOR ANY
PURPOSE WITHOUT THE WRITTEN PERMISSION OF
WEST ARCHITECTURE + DESIGN, LLC.

CONSULTANT:

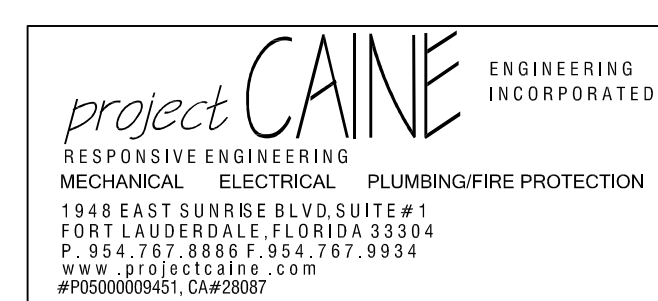
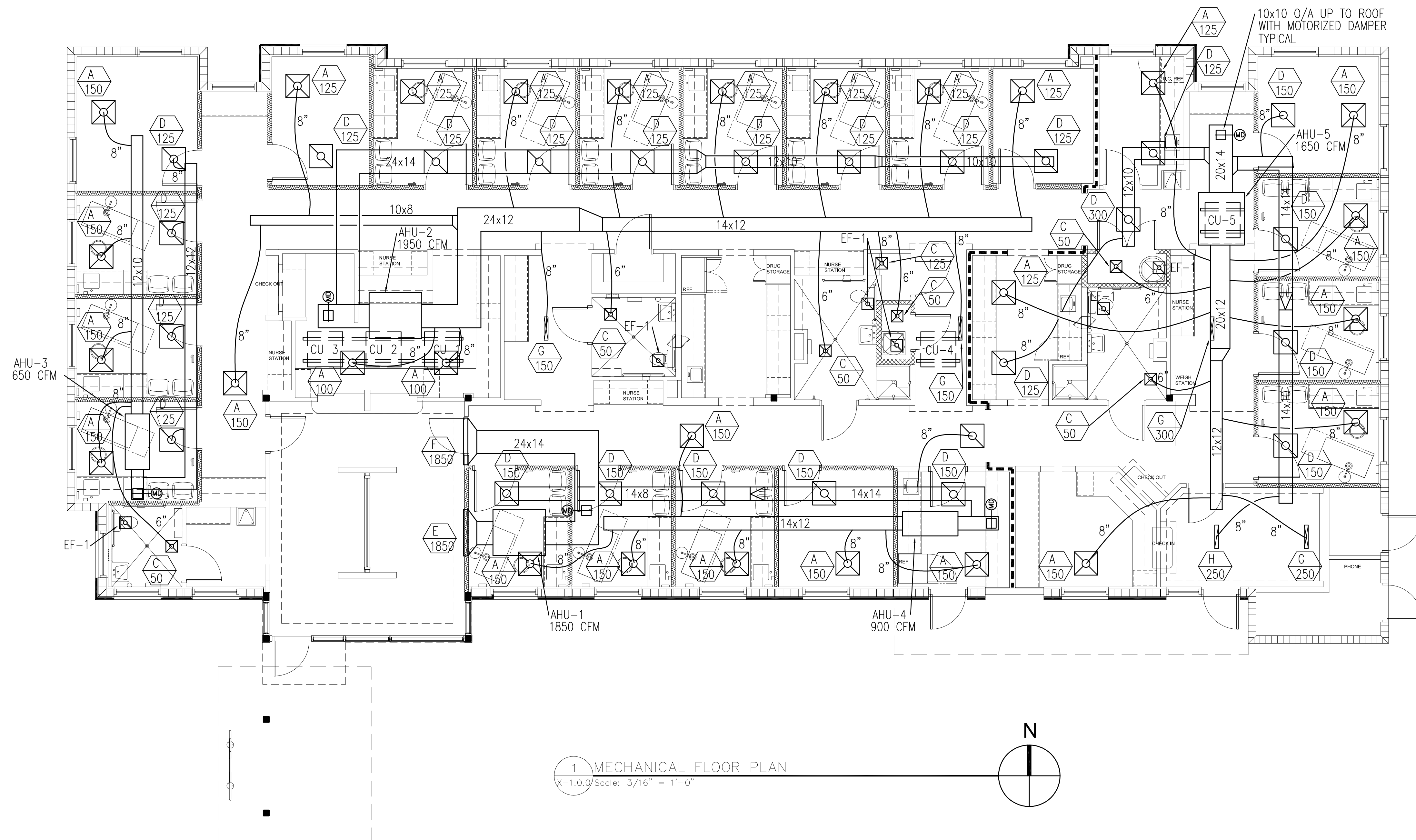
NEW FACILITY FOR:

HAVERHILL MEDICAL
OFFICE BUILDING

1520 N HAVERHILL RD
WEST PALM BEACH, FL 33421

DATE: 09.24.2010
NUMBER: A10-008
REVIEWED: RBC
MANAGED: XXX
DRAWN/DRAWN BY

MECHANICAL
FLOOR PLAN



M-1.0.0