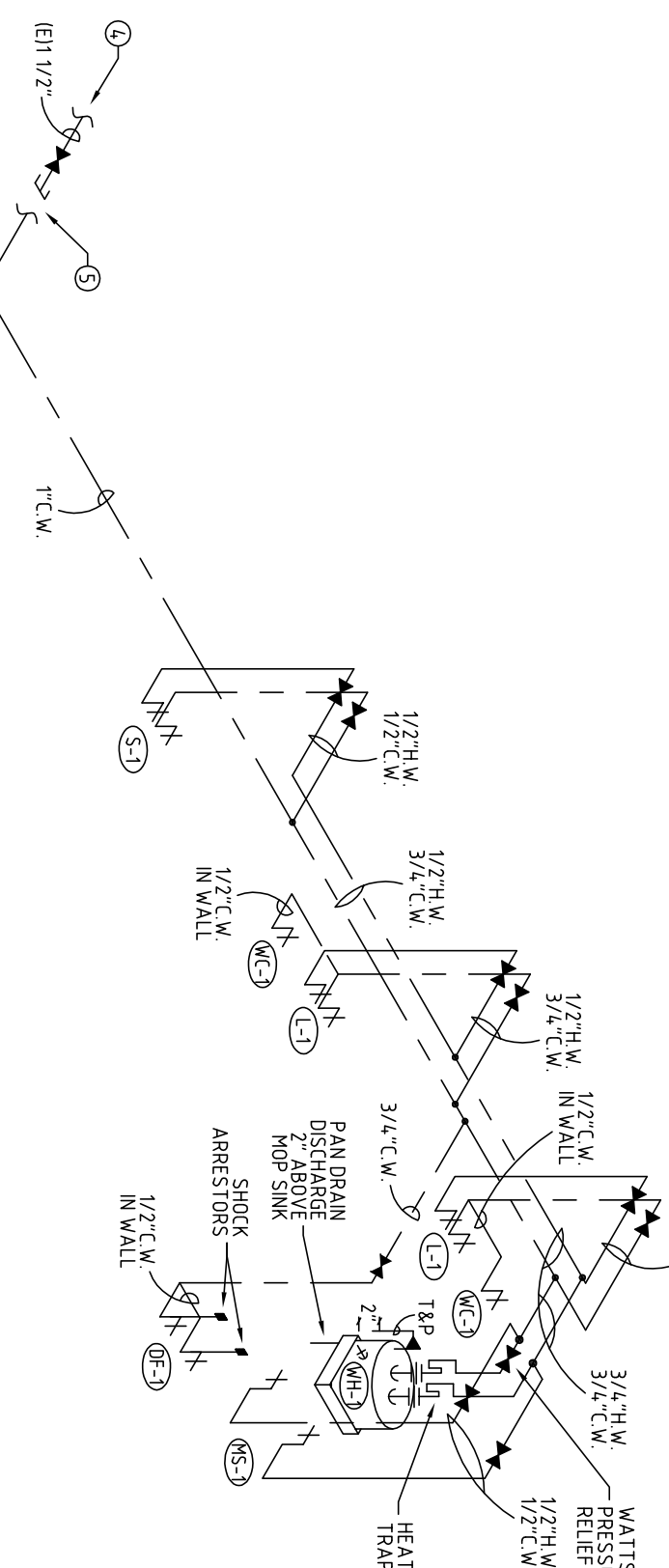
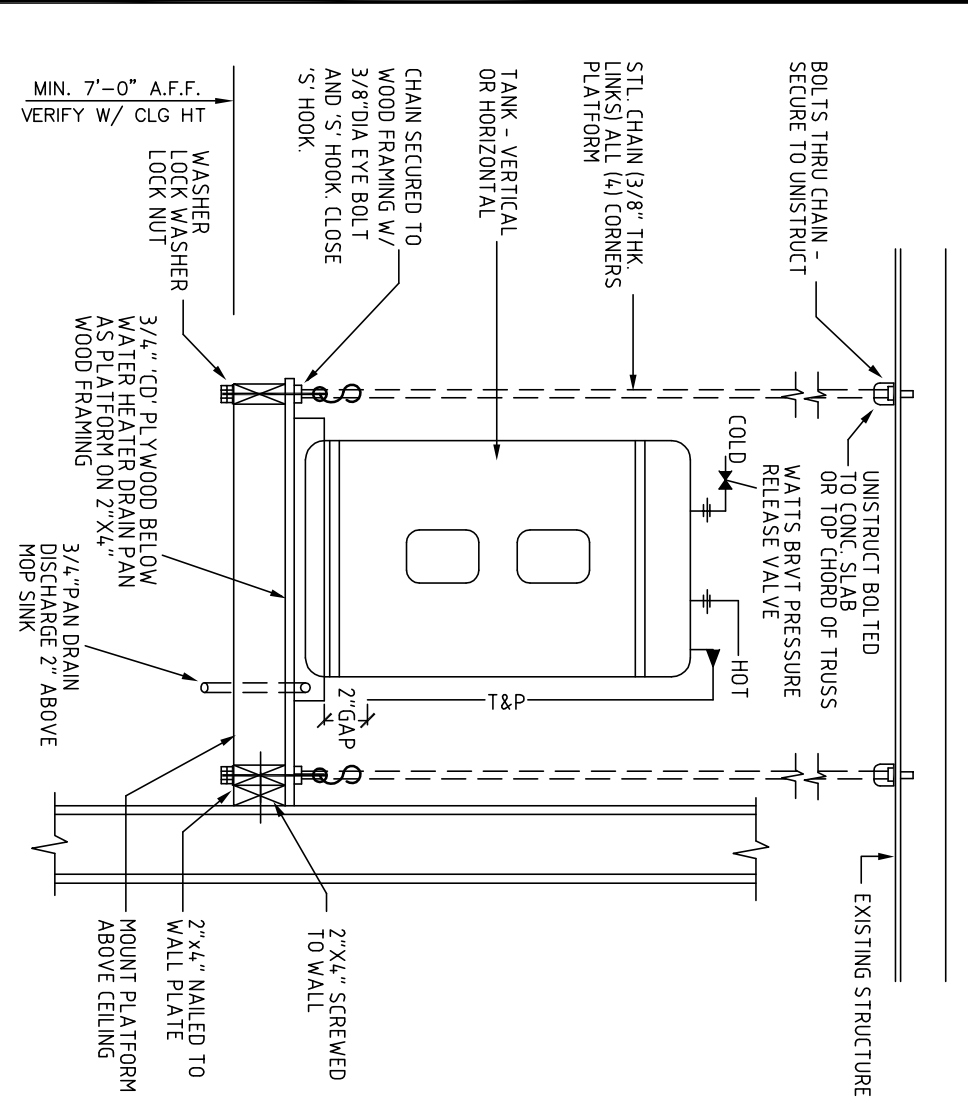


<b>RISER NO. 1</b>	<b>SANITARY</b>	NOT TO SCALE
--------------------	-----------------	--------------

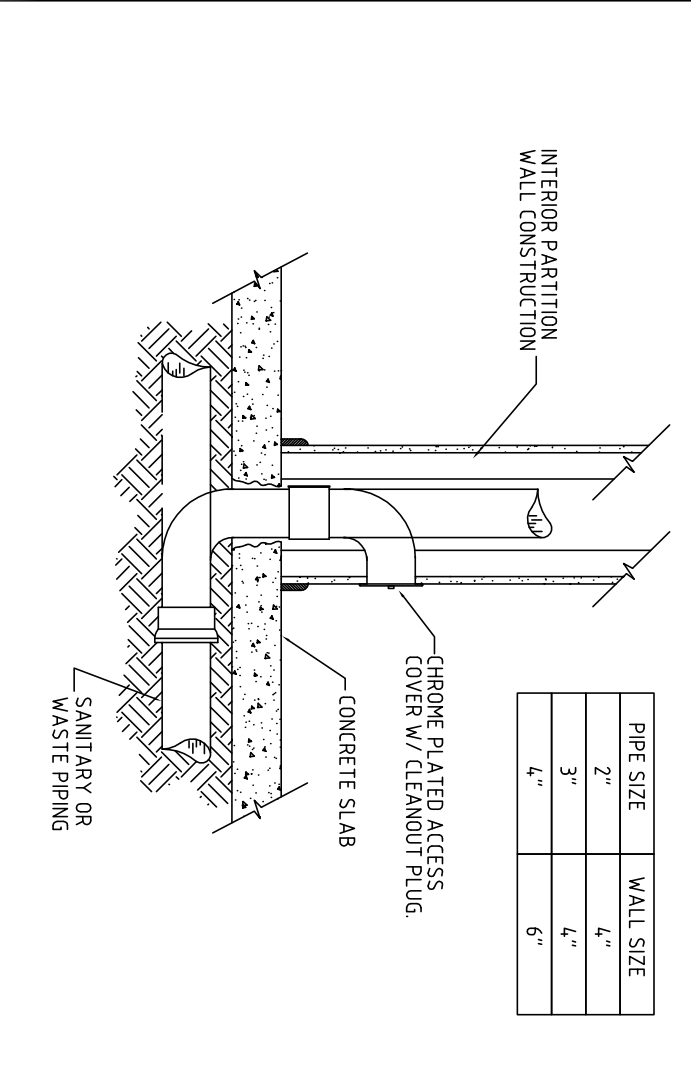


<b>RISER NO. 2</b>	<b>WATER</b>	NOT TO SCALE
--------------------	--------------	--------------

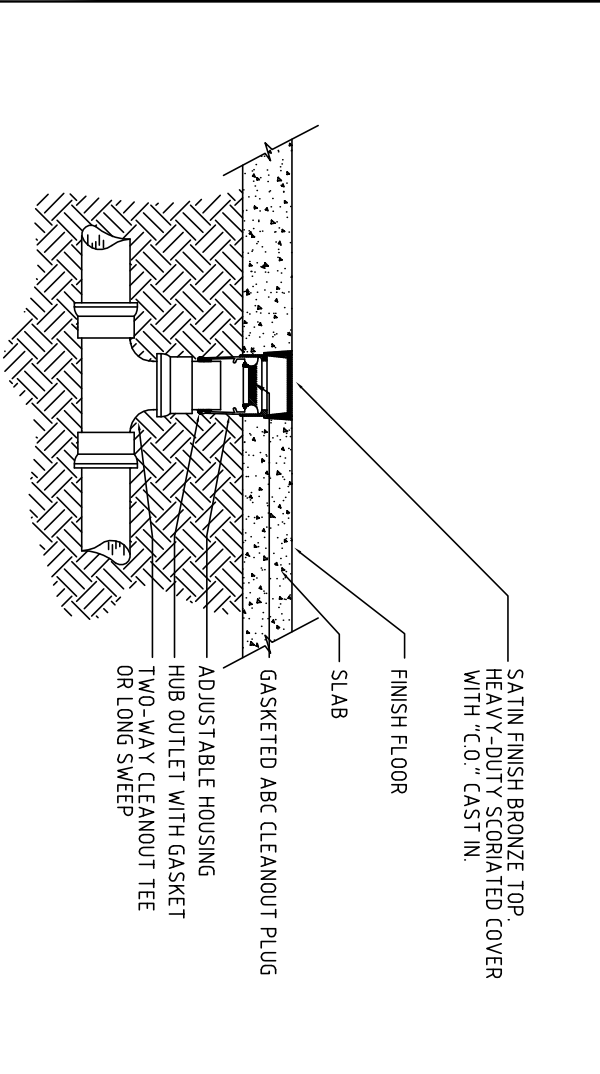


<b>DETAIL NO. 1</b>	<b>WATER HEATER ON PLATFORM</b>	NOT TO SCALE
---------------------	---------------------------------	--------------

- KEYNOTES**
- EXISTING SANITARY LINE BELOW SLAB. VERIFY EXACT LOCATION, SIZE, INVERT, DIRECTION OF FLOW & CONNECTION POINT IN FIELD PRIOR TO CONSTRUCTION.
  - CONNECT NEW 2" SANITARY LINE TO EXISTING SANITARY LINE BELOW SLAB VERIFY EXACT LOCATION, SIZE, INVERT, DIRECTION OF FLOW & CONNECTION POINT IN FIELD PRIOR TO CONSTRUCTION.
  - CONNECT NEW 3" SANITARY LINE TO EXISTING SANITARY LINE BELOW SLAB VERIFY EXACT LOCATION, SIZE, INVERT, DIRECTION OF FLOW & CONNECTION POINT IN FIELD PRIOR TO CONSTRUCTION.
  - EXISTING 1/2" COLD WATER LINE ABOVE CEILING. VERIFY EXACT LOCATION, SIZE & CONNECTION POINT IN FIELD PRIOR TO CONSTRUCTION.
  - CONNECT NEW 1/2" COLD WATER TO EXISTING COLD WATER LINE WITH 1/2" COP ABOVE CEILING VERIFY EXACT LOCATION, SIZE & CONNECTION POINT IN FIELD PRIOR TO CONSTRUCTION.
  - CONNECT NEW 3" CONDENSATE LINE TO EXISTING CONDENSATE LINE ABOVE CEILING. VERIFY EXACT LOCATION, SIZE, INVERT, DIRECTION OF FLOW & CONNECTION POINT IN FIELD PRIOR TO CONSTRUCTION.



<b>DETAIL NO. 2</b>	<b>WALL CLEAN-OUT</b>	NOT TO SCALE
---------------------	-----------------------	--------------



<b>DETAIL NO. 3</b>	<b>FLOOR CLEAN-OUT (FCO)</b>	NOT TO SCALE
---------------------	------------------------------	--------------

**Installing the Unit**

- The Pure Flow 1000 is not for outside use. Do not install the eyewash station in an outside location.
- The Pure Flow 1000 must be placed in a well-ventilated, accessible location near the hazard.
- Minimum clearances must be maintained around the unit (100 lbs./45 kg) plus weight of the individual leaning on it.
- Mounting must support the weight of the unit (100 lbs./45 kg) plus weight of the individual leaning on it.
- Top of bracket must be 52"-1/2" - 64"-1/2" (133 cm - 164 cm) from the floor.
- Remove cover and mount unit onto the bracket.
- Unit must be level.
- Area beneath station must remain clear.

<b>DETAIL NO. 4</b>	<b>EYE WASH STATION</b>	NOT TO SCALE
---------------------	-------------------------	--------------

PRIOR TO SUBMITTING THE BID, THE CONTRACTOR SHALL FIELD VERIFY ALL EXISTING CONDITIONS AND INFORMATION THE ARCHITECT AND THE ENGINEER OF ANY DISCREPANCY BETWEEN THESE DOCUMENTS AND THE EXISTING CONDITIONS AND HE SHALL INCLUDE IN HIS BID TO CORRECT THE SAME AS DIRECTED. THE ENGINEER AND THE ARCHITECT, ARE NOT RESPONSIBLE FOR ANY ADDITIONAL COSTS RESULTING FROM VERIFYABLE EXISTING CONDITIONS DISCOVERED AFTER CONTRACT HAS BEEN AWARDED. NO CHANGES SHALL BE MADE TO THESE PLANS WITHOUT PRIOR APPROVAL FROM THE ENGINEER OF RECORD. ALL CHANGES SHALL BE SUBMITTED FOR REVIEW PRIOR TO INSTALLATION. NO 1/8\"/>

PERMIT SET: 12/30/10

**FARE CONSULTING**

1420 N.W. 82nd Avenue Blvd.  
 Boca Raton, FL 33432  
 TEL: (561) 391-9292 FAX: (561) 391-9898  
 DORIS@FARECONSULTING.COM  
 291 921 5  
 MARTIN@FARECONSULTING.COM  
 #38999  
 EMAIL: info@fareconsulting.com

**PLUMBING RISERS, DETAILS & SPECS**

SCALE: 1/8" = 1'-0"

- PLUMBING SPECIFICATIONS**
- ALL WORK SHALL BE DONE IN ACCORDANCE WITH THE FLORIDA BUILDING CODE 2007 EDITION AND ORDINANCES.
  - ALL WORKMANSHIP & MATERIALS SHALL BE IN STRICT ACCORDANCE WITH APPLICABLE NATIONAL, STATE, LOCAL CODES, RULES & ORDINANCES.
  - CONTRACTOR SHALL VISIT THE JOB SITE & THOROUGHLY FAMILIARIZE HIMSELF WITH ALL EXISTING CONDITIONS.
  - ALL MATERIALS SHALL BE NEW.
  - ALL WORK SHALL BE PERFORMED BY A LICENSED PLUMBING CONTRACTOR IN A FIRST CLASS WORKMANLIKE MANNER. THE COMPLETE SYSTEM SHALL BE FULLY OPERATIVE.
  - ALL EXCAVATION & BACK FILL AS REQUIRED FOR THIS PHASE OF CONSTRUCTION SHALL BE A PART OF THIS CONTRACT.
  - REQUIRED INSURANCE SHALL BE PROVIDED BY THE CONTRACTOR FOR PROTECTION AGAINST PUBLIC LIABILITY & PROPERTY DAMAGE FOR THE DURATION OF WORK.
  - CONTRACTOR SHALL PAY FOR ALL PERMITS, FEES, INSPECTIONS & TEST OPERATIONS AS THE CONTRACTOR SHALL HAVE WORK APPROVAL. ANY CHANGES TO THE ORIGINAL PERMITS SHALL BE PAID BY THE CONTRACTOR TO BE PAID TO THE ORIGINAL DESIGN.
  - ALL WORK SHALL BE COORDINATED WITH OTHER TRADES TO AVOID INTERFERENCE WITH THE PROCESS OF CONSTRUCTION.
  - THE CONTRACTORS AND SUBCONTRACTORS SHALL BE RESPONSIBLE FOR REVIEW OF THE GENERAL NOTES, SPECIFICATIONS, AND ALL OTHER DRAWINGS FOR ADDITIONAL CORRECTIONS. CORRECTIONS SHOULD BE SPECIFICALLY CALLED OUT IN THIS PORTION OF THE CONSTRUCTION DOCUMENTS.
  - DRAWINGS FOR PLUMBING WORK ARE DIAGNOSTIC. SHOWING THE GENERAL LOCATION, EXACT MEASUREMENT, FIELD VERIFY FINAL LOCATIONS FOR EQUIPMENT. REFER TO ARCHITECTURAL DRAWINGS FOR DIMENSIONS AND EXACT LOCATION OF PLUMBING EQUIPMENT. REFER TO MECHANICAL DRAWINGS FOR DIMENSIONS AND EXACT LOCATION OF PLUMBING EQUIPMENT. CONNECTIONS AND INSTALLATION REQUIREMENTS.
  - DRAWINGS AND SPECIFICATIONS GOVERN WHERE THEY EXCEED CODE REQUIREMENTS.
  - VERIFY LOCATION, SIZE, TAPS, INVERTS OF ALL EXISTING UTILITIES PRIOR TO BEGINNING CONSTRUCTION. ADVISE ENGINEER OF ANY DISCREPANCIES. ANY COST RESULTING FROM DISCREPANCIES NOT REPORTED AT THIS TIME SHALL BE PAID BY THE CONTRACTOR.
  - INSTALL AIR CHAMBERS OR SHOCK ABSORBERS IN PIPING SYSTEM TO PREVENT NOISE AND DAMAGE DUE TO WATER HAMMER.
  - PROVIDE SHUT-OFF VALVES IN THE SUPPLY PIPING TO EVERY FIXTURE.
  - ALL FIXTURES MUST BE PROVIDED WITH READILY ACCESSIBLE STOPS.
  - IN AREAS WHERE AN EXISTING PIPING IS TO BE REMOVED AND THE SANITARY LINE IS TO BE CAPPED, THE LINE MUST BE CAPPED WITH IN 2 FEET OF AN ACTIVE SANITARY LINE. NO DEAD ENDS PERMITTED.
  - CAP ALL PIPING OPENINGS DURING CONSTRUCTION UNTIL FINAL CONNECTIONS TO EQUIPMENT AND ACCESSORIES ARE MADE.
  - SANITARY PIPE 3" AND SMALLER SHALL BE SLOPED AT 1/4" PER FOOT. SANITARY PIPE 4" AND LARGER SHALL BE SLOPED AT 1/8" PER FOOT. CONDENSATE PIPING SHALL BE SLOPED AT A MINIMUM OF 1/4" PER FOOT.
  - ALL ROOM PREPARATIONS MUST BE CLEARED, FINE STOPPED, GROUTED, SEALED AND MADE WATERPROOF IN ACCORDANCE WITH THE UNIFORMS REQUIREMENTS. STEVES MUST EXTEND TO ANY UNDER SLAB UTILITIES, ETC. ARE NOT DAMAGED DURING FLOOR PAVING ACTIVITIES WHICH DEGRADE WORK MUST BE PERFORMED AFTER HOURS SO LONG AS ANY OTHER TRADES ARE OCCUPYING THE BUILDING. PRIOR APPROVAL AND COORDINATION WITH PROPERTY MANAGEMENT IS REQUIRED FOR ALL CONCRETE CUTTING.
  - DO NOT ROUTE ANY WET PIPING OVER ELECTRICAL EQUIPMENT.
  - WATER PIPING TO BE TYPE "W" OR TYPE "L" COPPER ABOVE OR BELOW GRADE.
  - SOIL, WASTE & VENT PIPING TO BE PVC 40/DWV.
  - WHERE DISSEMBLABLE METALS ARE TO BE JOINED, APPROVED INSULATING JOINTS SHALL BE USED.
  - ALL PLUMBING PIPES PENETRATING FIRE RATED WALLS, CEILING, AND/OR FLOORS SHALL BE PROVIDED WITH UL APPROVED FIRE RATED ASSEMBLY - FLOOR TO WALL FIRE RATING - SEE ARCHITECT SHAL DRAWINGS.
  - CONDENSATE LINES TO BE COPPER/PVC DEPENDING ON PROJECT REQUIREMENTS INSULATE WITH 1/2" THICK AMPLIFLEX INSULATION.
  - CONTRACTOR SHALL GUARANTEE ALL MATERIALS & WORKMANSHIP FREE FROM DEFECTS FOR A PERIOD OF NOT LESS THAN ONE (1) YEAR FROM DATE OF ACCEPTANCE CORRECTION OF ANY DEFECTS SHALL BE COMPLETED WITHIN 48 HOURS. CONTRACTOR SHALL BE RESPONSIBLE FOR THE REINSTALLATION OF ANY MATERIALS THAT ARE DAMAGED THEREBY.
  - CONTRACTOR TO VERIFY ALL EXISTING CONDITIONS PRIOR TO BID AND INSTALLATION. THESE CONDITIONS AND SHALL INCLUDE HIS BID TO CORRECT THE SAME AS DIRECTED. THE ENGINEER AND THE ARCHITECT ARE NOT RESPONSIBLE FOR ANY ADDITIONAL COSTS RESULTING FROM VERIFYABLE EXISTING CONDITIONS DISCOVERED AFTER THE CONTRACT HAS BEEN AWARDED.
  - CONTRACTOR SHALL KEEP AS-BUILTS AND SUBMIT TO THE ENGINEER OF RECORD FOR REVIEW. ALL CHANGES SHALL BE REWARDED & NUMBERED BY THE CONTRACTOR TO MATCH THE SET CONDITIONS AND SHALL INCLUDE HIS BID TO CORRECT THE SAME AS DIRECTED. THE ENGINEER AND THE ARCHITECT ARE NOT RESPONSIBLE FOR THE REINSTALLATION OF ANY MATERIALS THAT ARE DAMAGED THEREBY.

**PLUMBING LEGEND**

---	COLD WATER LINE
---	HOT WATER LINE
---	SANITARY LINE
---	EXISTING SANITARY LINE
---	SHUT-OFF VALVE

**P2.01**

sheet title: RISERS, DETAILS & SPECS file name: 10306_P1.01(2).DWG	project no: 10306 date: 12/30/10 drawn by: AN/DC/AB checked by: MW	revisions:
---	---	------------

**TENANT IMPROVEMENTS FOR:**

**West Marine**

Shoppes at City Centre (North Palm Marketplace)  
 11241 U.S. HIGHWAY ONE  
 NORTH PALM BEACH, FLORIDA

COPYRIGHT 2010  
 BY GLIDDEN SPINA & PARTNERS, INC. ALL RIGHTS RESERVED.  
 NO PART OF THIS DOCUMENT IS TO BE REPRODUCED OR TRANSMITTED IN ANY FORM OR BY ANY MEANS, WITHOUT THE EXPRESS WRITTEN PERMISSION OF GLIDDEN SPINA & PARTNERS, INC.

**GS&P** **GLIDDEN • SPINA & PARTNERS**  
 ARCHITECTURE • INTERIOR DESIGN, INC.

PHONE : 561.684.6844 • FAX : 561.684.5594 • E-MAIL : info@gsp-architects.com  
 1401 FORUM WAY, SUITE 100 • WEST PALM BEACH, FLORIDA 33401  
 FL License: #AA26001602

Keith M. Spina #AR13419 Benjamin John Glidden, III #AR6536