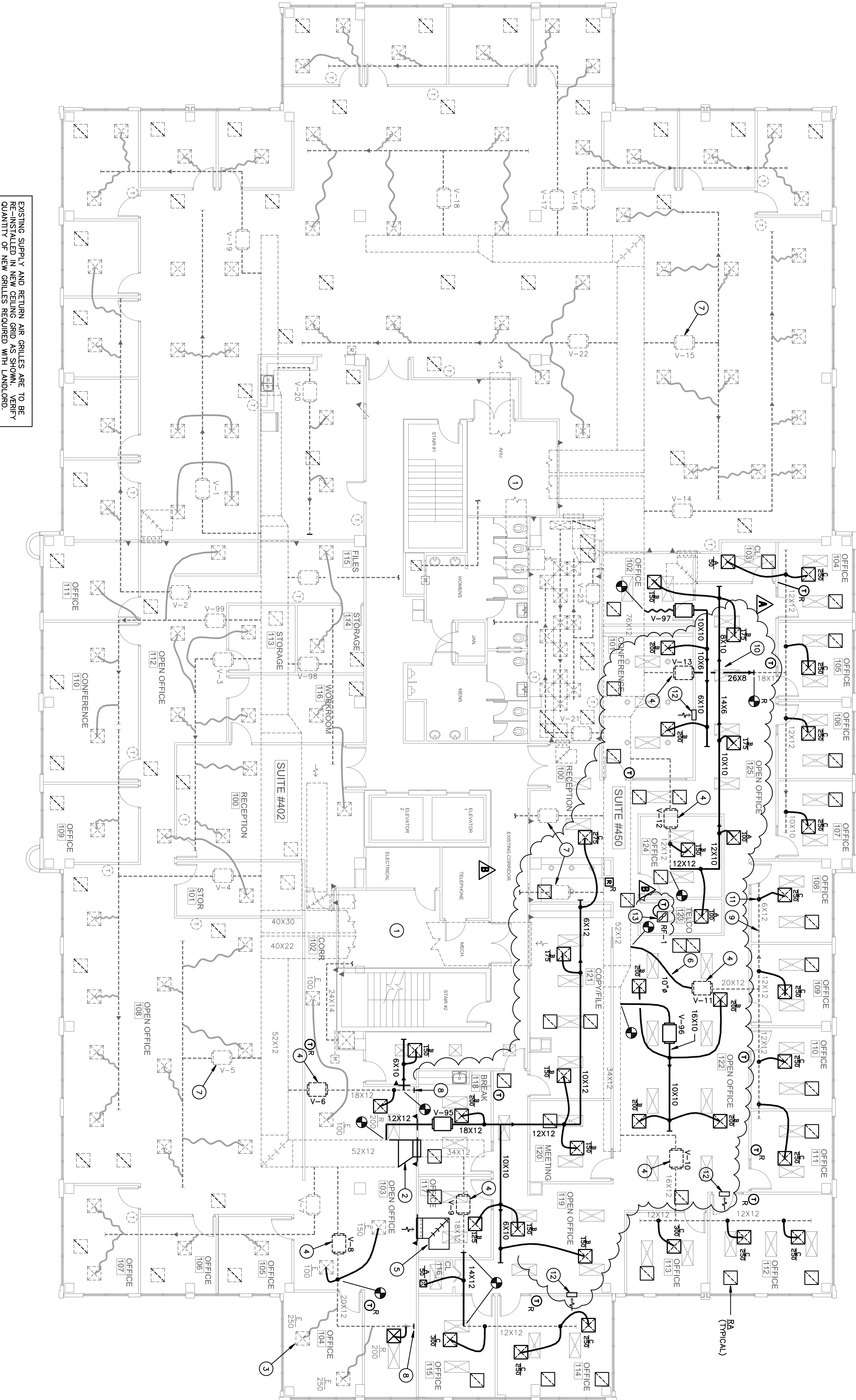


ABBREVIATIONS	
VAV	VARIABLE AIR VOLUME
S/A	SUPPLY AIR
R/A	RETURN AIR
O/A	OUTSIDE AIR
E/A	EXHAUST AIR
CFM	CUBIC FEET PER MINUTE
MWD	MANUAL VOLUME DAMPER (OPPOSED BLADE TYPE)
FD	FIRE DAMPER
E	EXISTING TO REMAIN
R	RE-LOCATED EXISTING EQUIPMENT

SYMBOL LEGEND	
	EQUIPMENT TO REMAIN
	EQUIPMENT AS NOTED
	SUPPLY AIR DIFFUSER TO REMAIN
	RETURN/TRANSFER GRILLE TO REMAIN
	SUPPLY AIR DIFFUSER AS NOTED
	RETURN/TRANSFER GRILLE AS NOTED
	DUCTWORK AS NOTED
	EXISTING DUCTWORK TO REMAIN
	OVERTIME A/C CARD READER
	TYPE B FIRE DAMPER W/ACCESS DOOR
	MANUAL VOLUME DAMPER
	THERMOSTAT TO REMAIN
	THERMOSTAT AS NOTED
	FLEXIBLE DUCT, UL CLASS 1
	DUCT TRANSITION
	CONNECTION TO EXISTING EQUIPMENT

- DRAWING KEYNOTES:**
- EXISTING CENTRAL AIR HANDLING UNIT TO REMAIN AS IS.
 - RE-LOCATE EXISTING DUCT TRANSITION AS REQUIRED FOR POSITIONING NEW RETURN SEPARATION WALL, AND PROVIDE NEW RETURN DAMPER AS SHOWN. (TYPICAL)
 - EXISTING AIR DEVICE TO BE RE-BALANCED AS SHOWN. (TYPICAL)
 - EXISTING VAV TERMINAL BOX TO BE RE-BALANCED. SET MAXIMUM AIR QUANTITIES AS SHOWN. SET MINIMUM AIR QUANTITY TO 40% OF MAXIMUM, OR LARGER IF REQUIRED FOR HEAT STRIP OPERATION. FIELD VERIFY (TYPICAL)
 - PROVIDE 36X18 AIR TRANSFER OPENING WITH FIRE DAMPER, SECURITY BARS AND DUCTBOARD ELBOW AS SHOWN.
 - PROVIDE NEW FLEXIBLE ENTERING AIR DUCT FOR EXISTING VAV TERMINAL AS SHOWN.
 - EXISTING VAV TERMINAL BOX TO REMAIN AS IS, NO WORK. (TYPICAL IN SUITE 402 EXCEPT WHERE NOTED OTHERWISE)
 - REMOVE EXISTING SUPPLY AIR DUCT DOWNSTREAM OF THIS POINT, AND PROVIDE INSULATED CLOSURE AT END OF DUCT.
 - PROVIDE INSULATED CLOSURE FOR UNUSED OPENINGS IN EXISTING DUCTS, MATCH EXISTING MATERIALS. (TYPICAL)
 - PROVIDE DUCT TRANSITIONS AS REQUIRED TO CROSS DUCTS AS SHOWN, FIELD VERIFY EXACT SIZES REQUIRED.
 - EXISTING FLEXIBLE DUCTS AND DUCT TAKE-OFFS MAY BE RE-USED WHERE PROPERLY SIZED FOR NEW WORK, AND IN GOOD CONDITION. PROVIDE NEW FLEXIBLE DUCTS, TAKE-OFFS AND REDUCERS AS REQUIRED. FIELD VERIFY.
 - PROVIDE 12X12 FRAMED OPENING IN WALL ABOVE CEILING FOR RETURN AIR TRANSFER (PROVIDE ADD ALTERNATE BID FOR RETURN AIR TRANSFER (PROVIDE ADD ALTERNATE BID FOR RECIRCULATION FAN, OUTLET OPEN TO CEILING PLenum.
 - PROVIDE ADD ALTERNATE PRICE FOR CEILING MOUNTED RECIRCULATION FAN, OUTLET OPEN TO CEILING PLenum.



EXISTING SUPPLY AND RETURN AIR GRILLES ARE TO BE RE-INSTALLED IN NEW CEILING GRID AS SHOWN. VERIFY QUANTITY OF NEW GRILLES REQUIRED WITH LANDLORD.

HVAC 4TH FLOOR PLAN - PROPOSED
 SCALE: 1/8" = 1'-0"

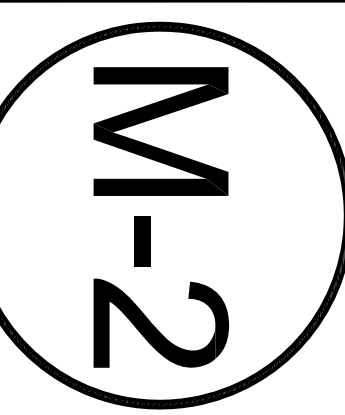
Gilman & Associates, Inc.
 MECHANICAL & ELECTRICAL ENGINEERS
 129 N. FEDERAL HIGHWAY SUITE 202
 LAKE WORTH, FL 33460 CA #009078
 (561) 582-0210 Fax (561) 582-8212
 RONALD D. GILMAN P.E. *37933

PROJECT # 10-0235

ANESTHETIX
 FAIRWAY OFFICE CENTER
 7111 FAIRWAY DRIVE #450
 PALM BEACH GARDENS, FL 33418
 PROJECT NUMBER 711105

REVISIONS	
1	09-30-10 TENANT
2	10-11-10 TENANT
3	
4	
5	

DRAWN BY DR
CD
 10-11-10



birse design inc.
 5300 woodland lakes drive
 palm beach gardens, fl 33418
 phone 561-249-4001
 fax 772-409-8684
 AA26001615